



CRAK WELD  
1ST F.B. FROM  
A. 2 @ 2ND  
STRINGER CONN. (DOWNSTREAM)  
EWN

5/97



White trash or debris on the concrete pier.

POPEAS 08/11/11

SCC 110

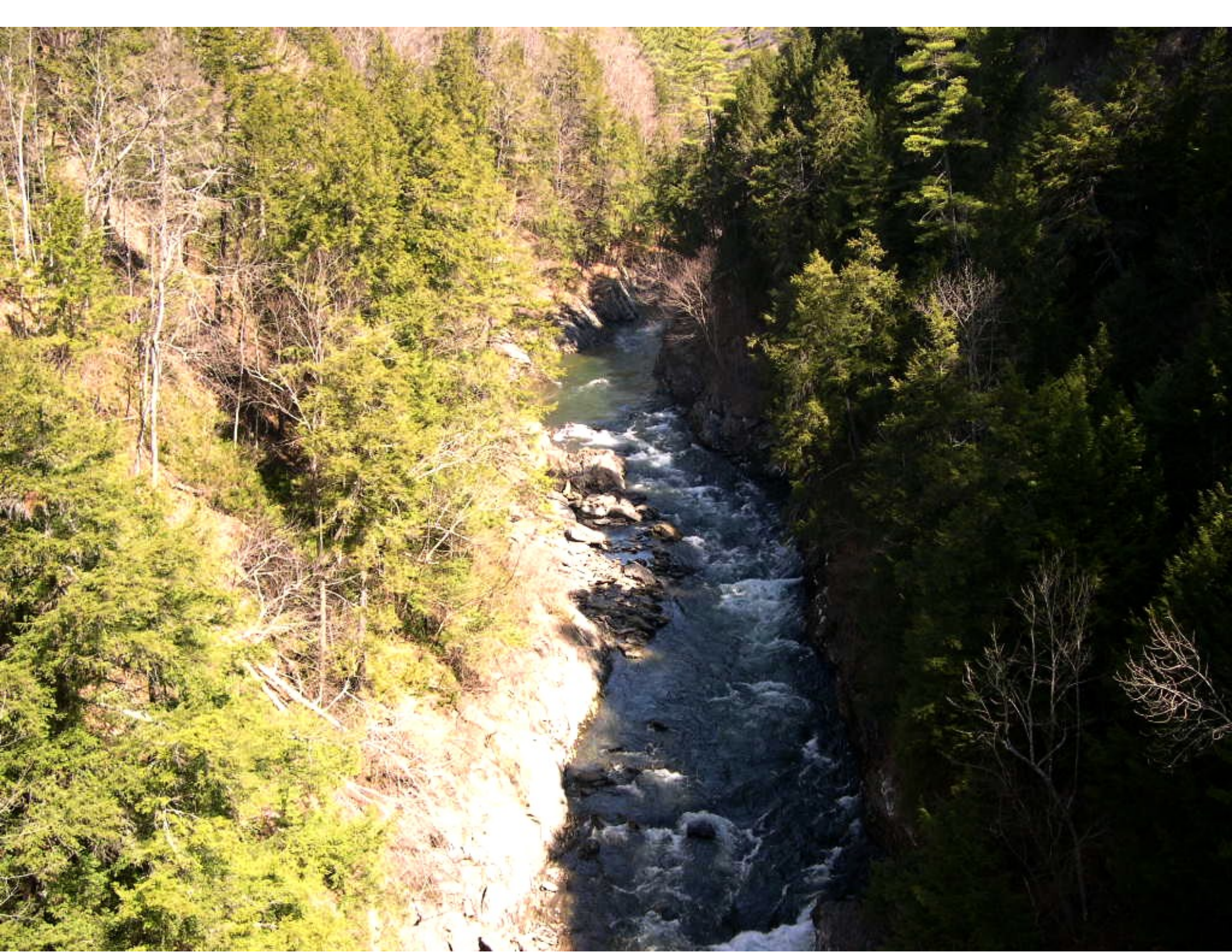




DOWN  
STREAM  
SIDE

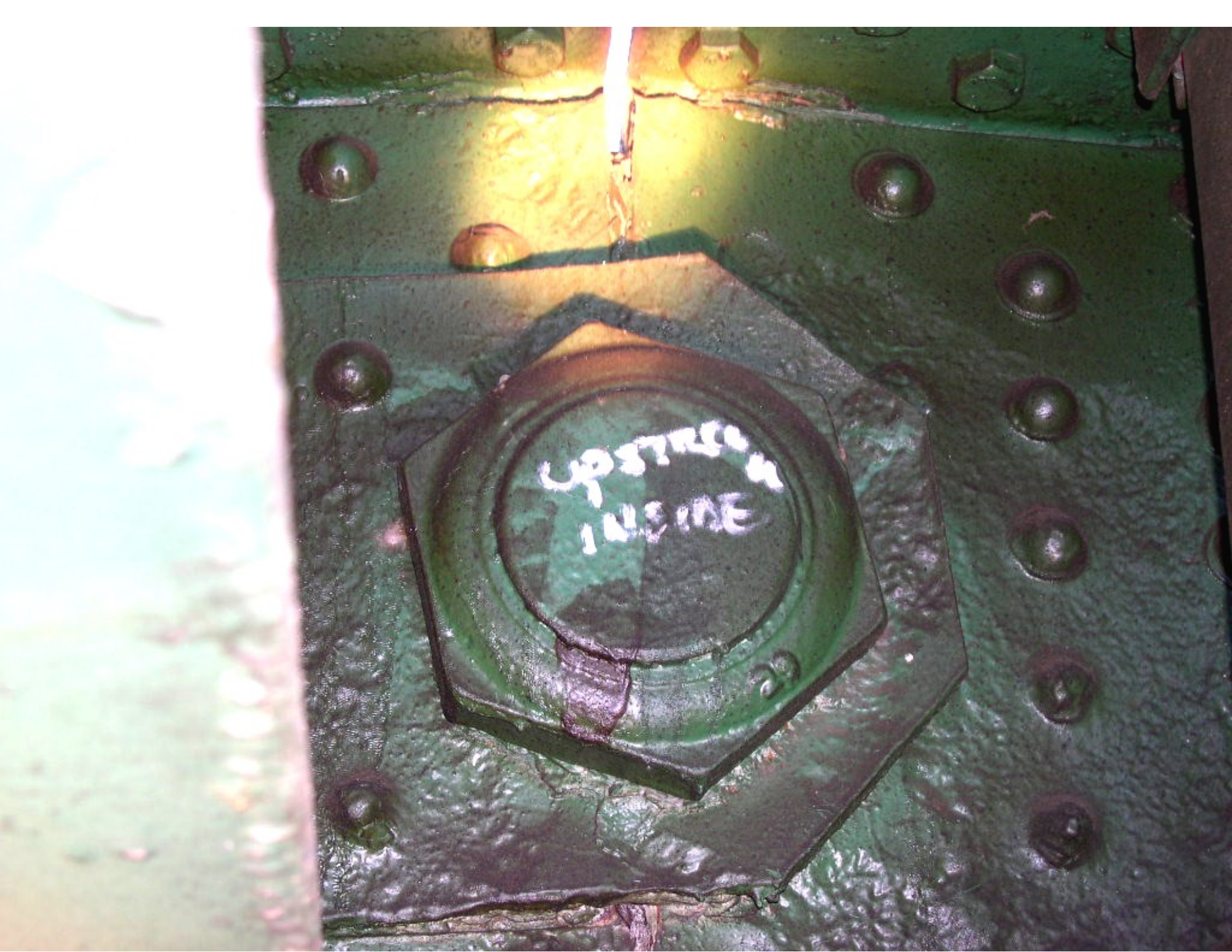












UPSTROKE  
IN LINE

22



UPSIDE  
OUTSIDE













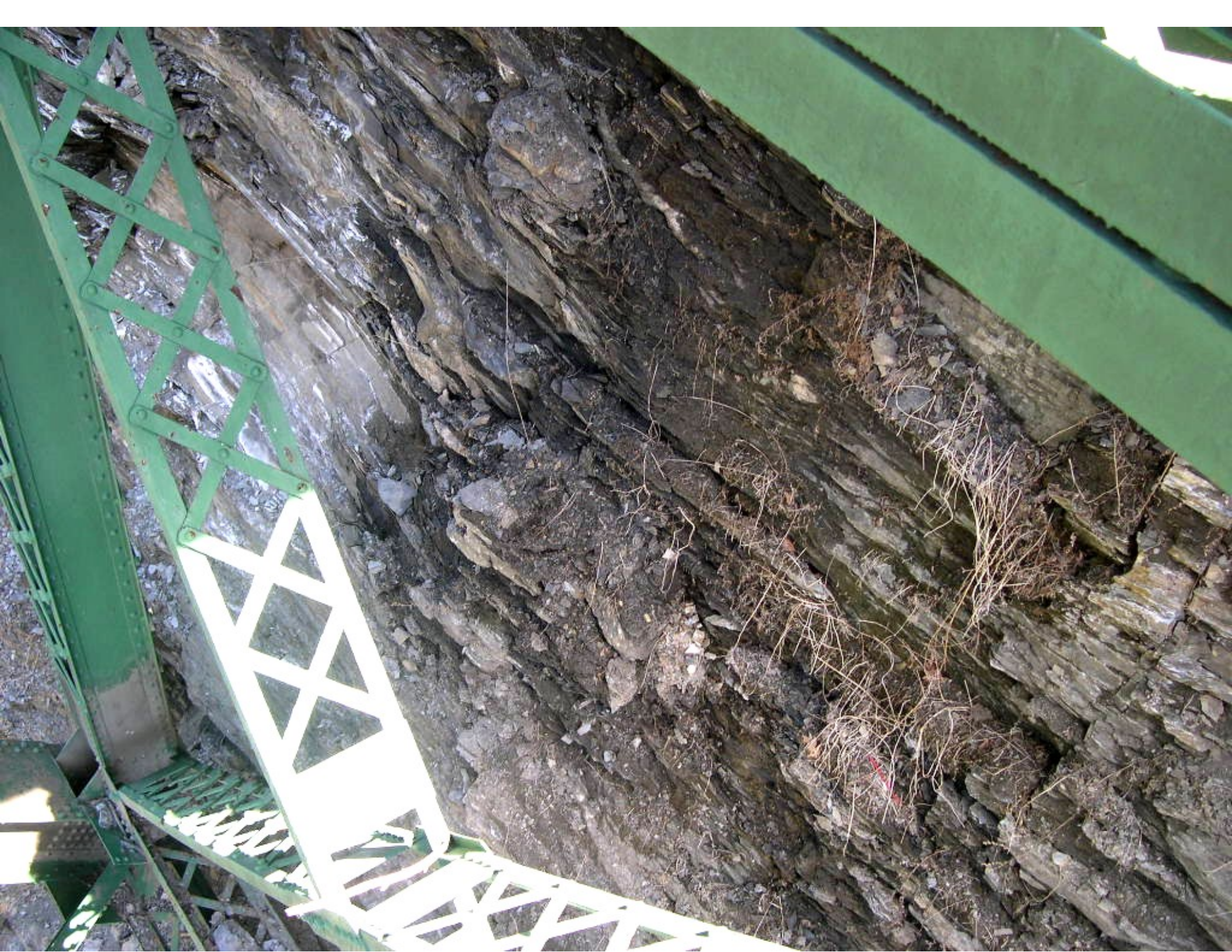






















QUECHEE  
GORGE

