

BRIDGE
5 S
1-9.1















TO 30
Manchester
Exit 2

SPEED
LIMIT

Worker in yellow vest

Dark car

Traffic cone

Traffic cone

Traffic cone







BRIDGE
NO.

AG IM 091-1(50)
BR 5S

2
0
1
2



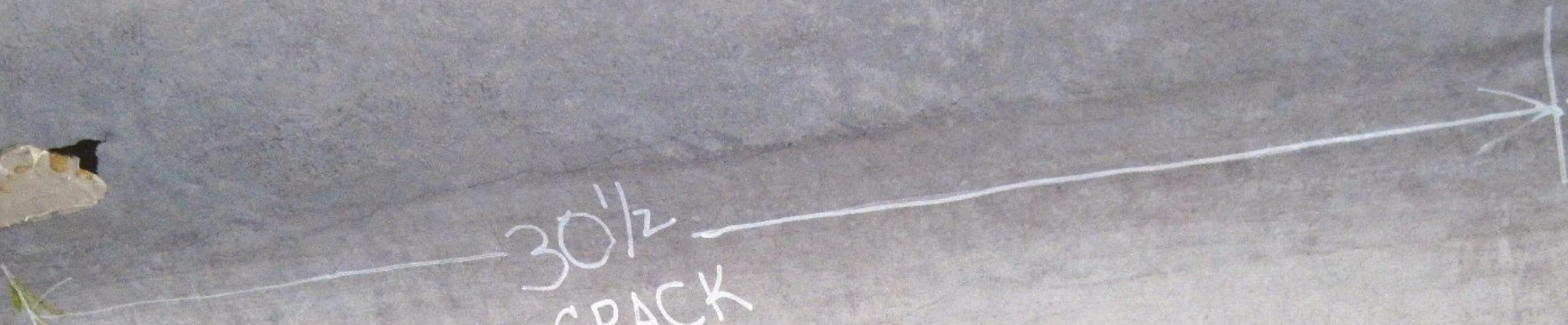




30 1/2
CRACK
FRE/TJB
4/10/14



30 1/2
CRACK
FRE / TUB
4/10/14

































Handwritten graffiti in red paint on a concrete pier. On the left, there is a wavy red line. To its right, there are stylized red letters that appear to read "GARE".



1210

↑ +2' - 0"







