



05/30/2012 08:31



05/30/2012 08:34



05/30/2012 08:35



05/30/2012 08:35



05/30/2012 08:37



05/30/2012 08:37



05/30/2012 08:37



05/30/2012 08:38



05/30/2012 08:40



05/30/2012 08:44



05/30/2012 08:44



05/30/2012 08:44



05/30/2012 08:47



05/30/2012 08:47



05/30/2012 08:49



05/30/2012 08:49

05/30/2012 08:49





05/30/2012 08:50



05/30/2012 08:50



05/30/2012 08:50



05/30/2012 08:51



05/30/2012 08:53



05/30/2012 08:55



05/30/2012 08:56



05/30/2012 09:02



05/30/2012 09:02



05/30/2012 09:02



05/30/2012 09:02



05/30/2012 09:08



05/30/2012 09:08



05/30/2012 09:09



05/30/2012 09:10



05/30/2012 09:10



05/30/2012 09:11



05/30/2012 09:11

B
2

B
3

05/30/2012 09:11





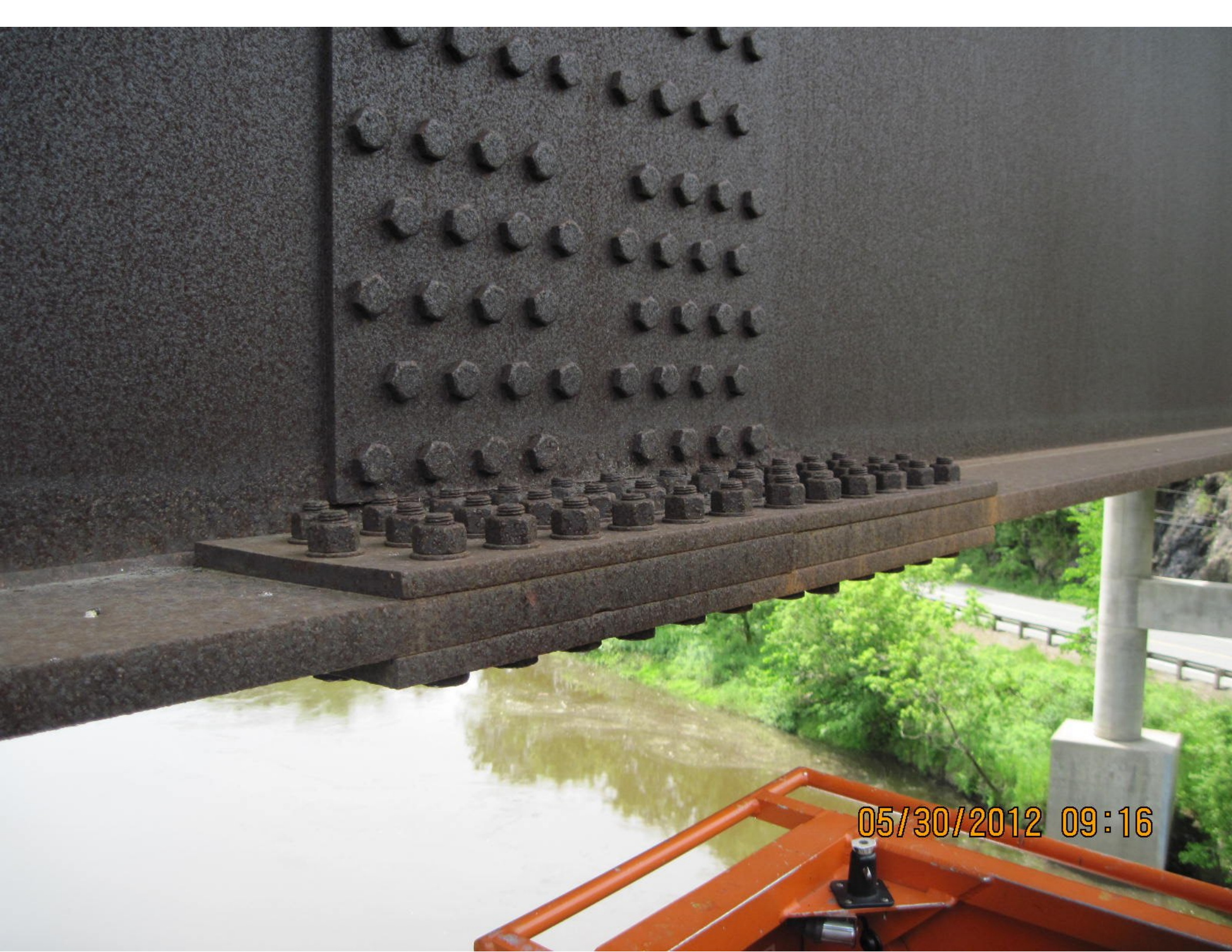
05/30/2012 09:15



05/30/2012 09:15



05/30/2012 09:16



05/30/2012 09:16



05/30/2012 09:17



05/30/2012 09:19



05/30/2012 09:19



05/30/2012 09:19



05/30/2012 09:19



05/30/2012 09:23



05/30/2012 09:23



05/30/2012 09:28



05/30/2012 09:28



05/30/2012 09:28



05/30/2012 09:30



05/30/2012 09:30



05/30/2012 09:33



05/30/2012 09:38

TOP

3

FS

G24



5/10/12
ENGINEERING DIVISION

05/30/2012 09:41



05/30/2012 09:44



05/30/2012 09:44



05/30/2012 09:44



05/30/2012 09:46



05/30/2012 09:46

05/30/2012 09:46



05/30/2012 09:46



05/30/2012 09:47



05/30/2012 09:48



05/30/2012 09:49



05/30/2012 09:49



05/30/2012 09:55



05/30/2012 09:56



05/30/2012 09:56