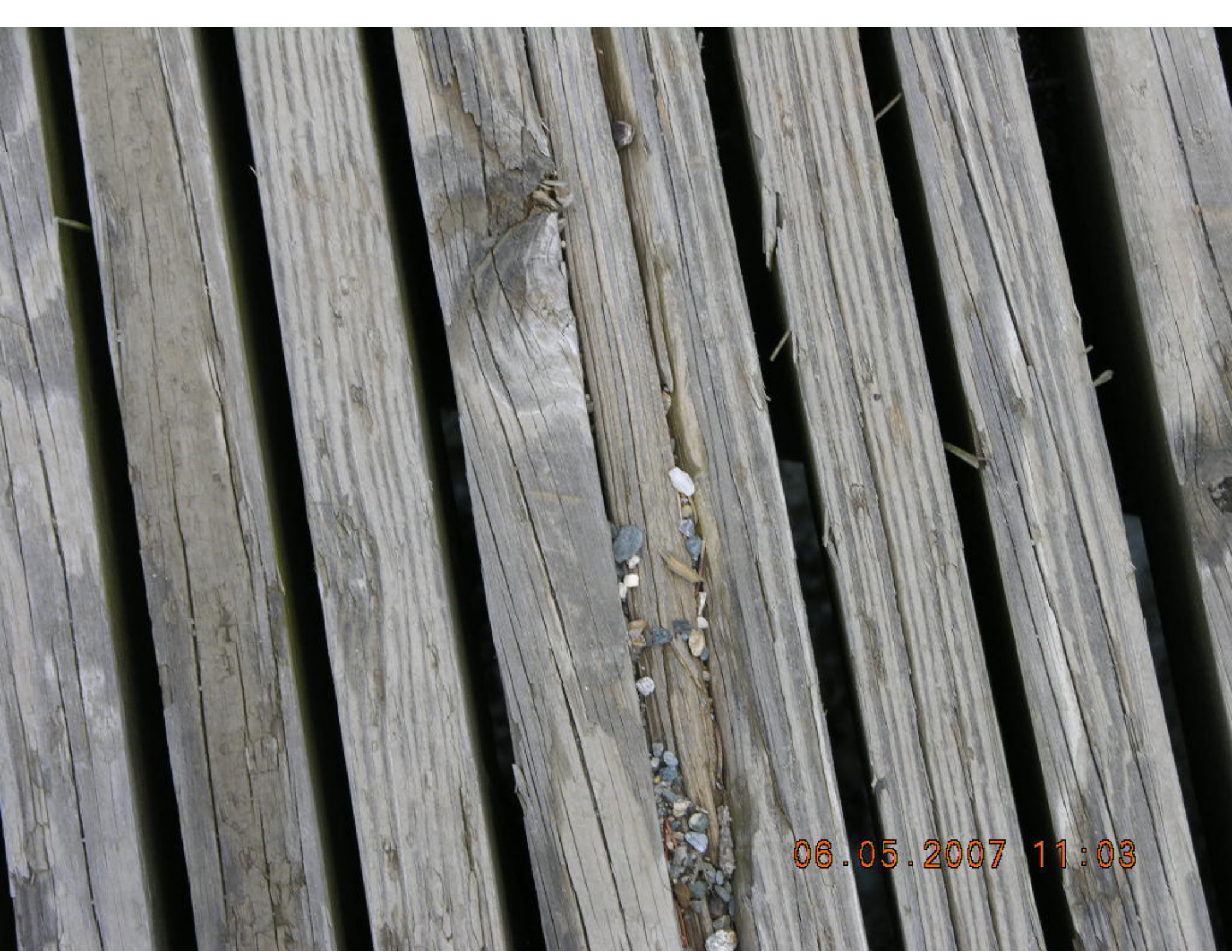




06.05.2007 11:02

**LEGAL LOAD
LIMIT
16,000
POUNDS**

06.05.2007 11:02



06.05.2007 11:03



06.05.2007 11:03

LEGAL LOAD
LIMIT
16,000
POUNDS

06.05.2007 11:03



06.05.2007 11:05



06.05.2007 11:06



06.05.2007 11:08



06.05.2007 11:08



06.05.2007 11:10



06.05.2007 11:10



06.05.2007 11:11