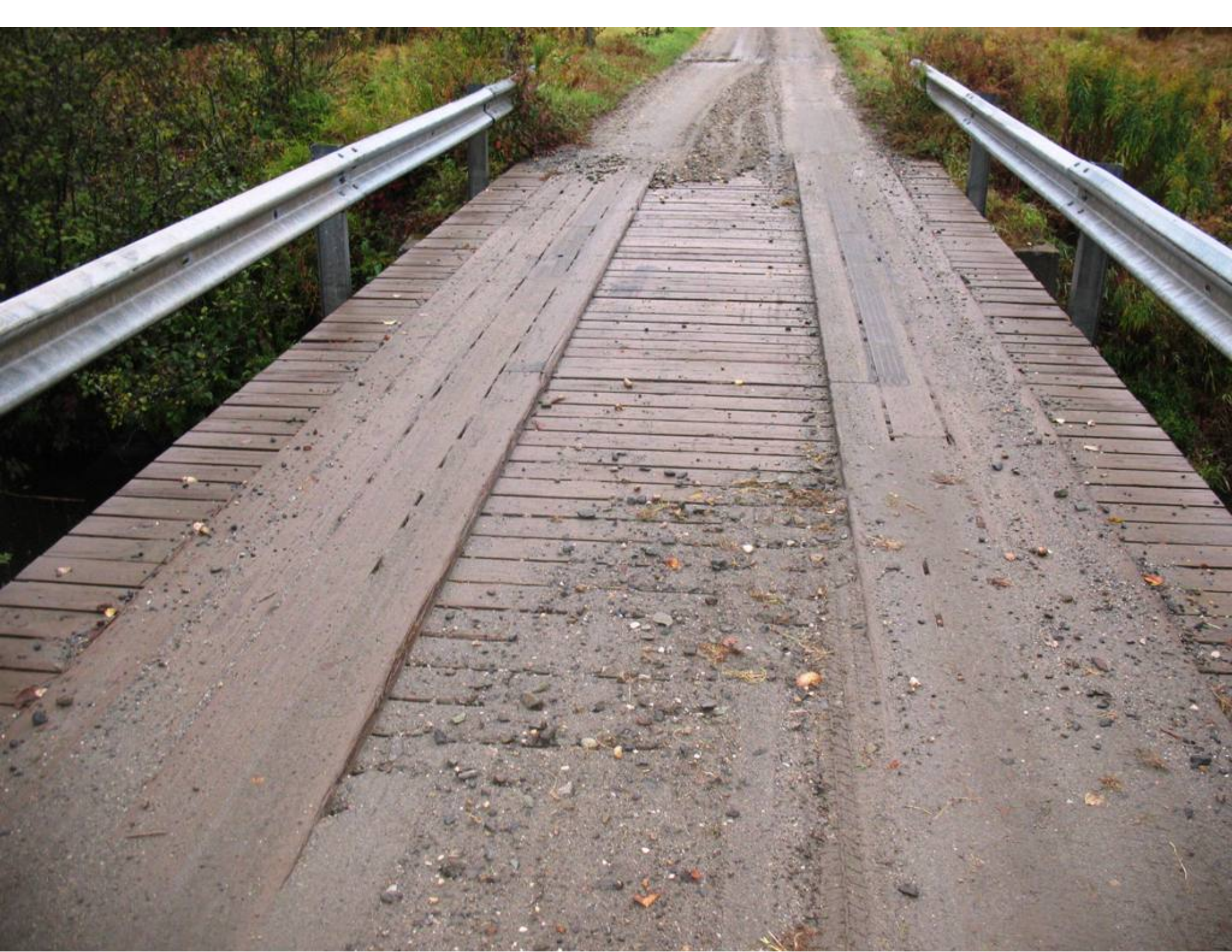


A photograph of a dirt road winding through a wooded area. A metal guardrail runs along the left side of the road. On the right side, a white rectangular sign on a post reads "LEGAL LOAD LIMIT 16,000 POUNDS". The road surface is uneven and shows tire tracks. The surrounding vegetation includes green trees and some autumn-colored shrubs.

LEGAL LOAD
LIMIT
16,000
POUNDS

A dirt road with a legal load limit sign. The road is unpaved and shows tire tracks. It is flanked by dense vegetation, including evergreen trees on the right and deciduous trees with yellowing leaves on the left. A metal guardrail is visible on the left side of the road. The sky is overcast.

LEGAL LOAD
LIMIT
16,000
POUNDS





LEGAL LOAD
LIMIT
16,000
POUNDS

SPEED
LIMIT
35











