











LIFT-ALL



RANTONVILLE  
1870  
WOODEN BRIDGE

WEIGHT  
LIMIT  
3  
TONS

↑  
9'-6"  
↓





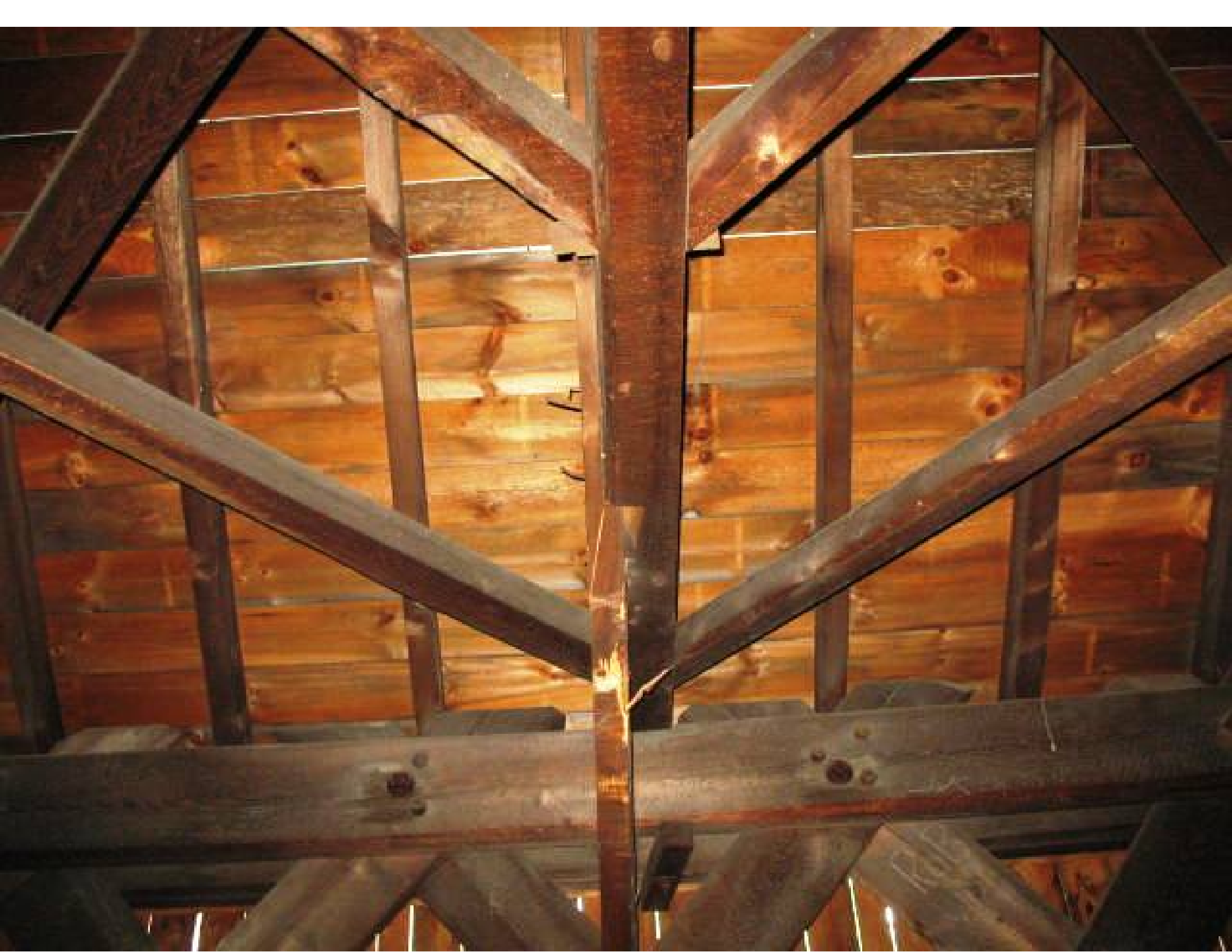














BARTONVILLE  
1870  
KAYVILLE BRIDGE

WEIGHT  
LIMIT  
3  
TONS

↑  
9'-6"  
↓

WEIGHT  
LIMIT  
3  
TONS

↑  
9'-6"  
↓















