

WEIGHT LIMIT



19 T



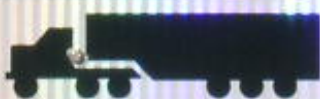
27 T



27 T



33 T



37 T





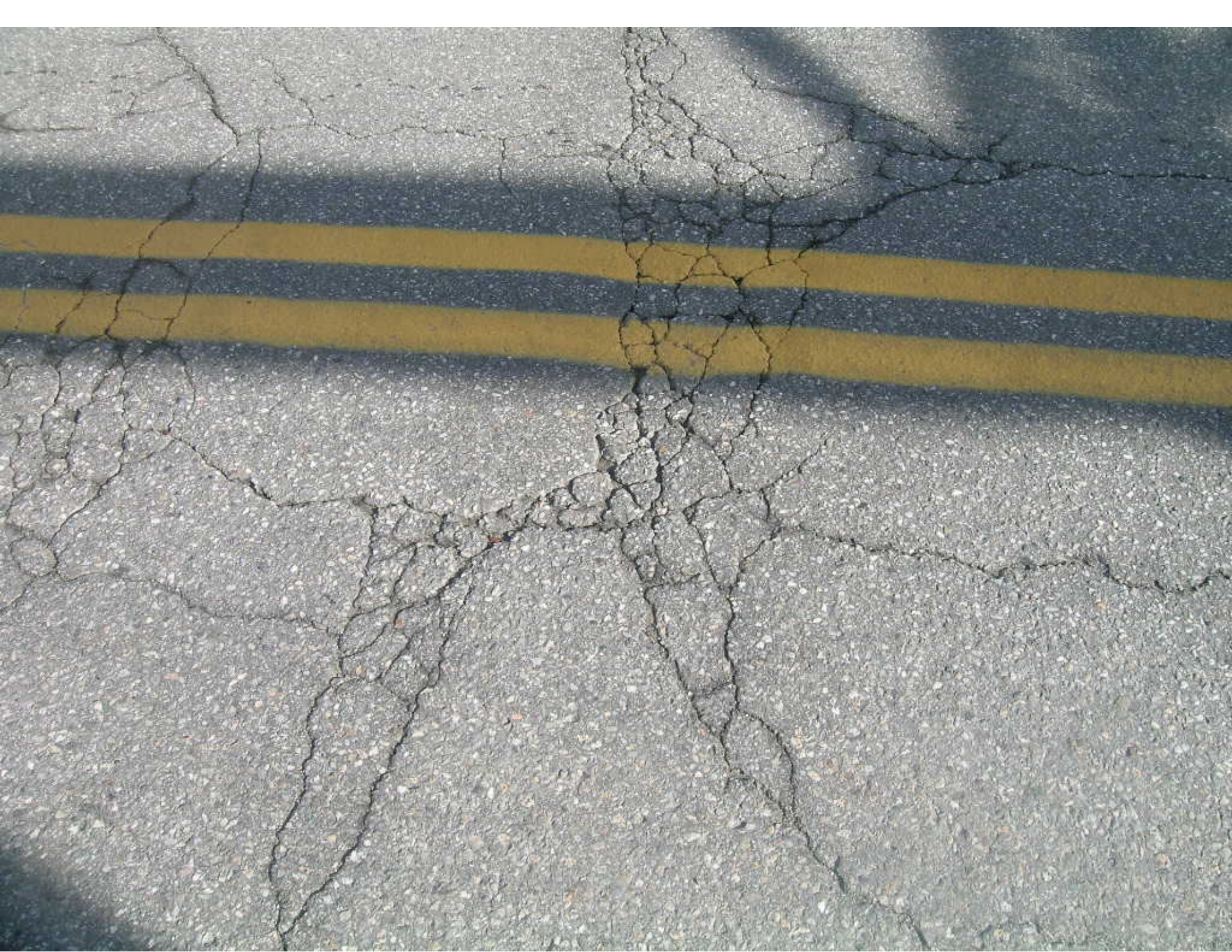
**NARROW
BRIDGE**















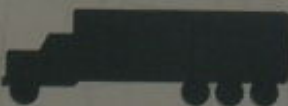
WEIGHT LIMIT



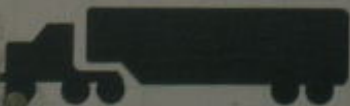
19T



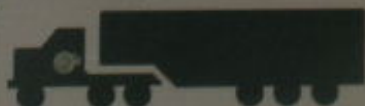
27 T



27 T



33 T



37T

































































































































**SPEED
LIMIT
35**

**THROUGH
WAY
BEGINS
HERE**

WEST WITH

15A

2

0

**LEGAL LOAD
LIMIT
6,000
POUNDS**

**POSTED
BRIDGE
1/4 MILE**

THROUGH
WAY
BEGINS
HERE

TO
WEST SOUTH
15A 12
100

POSTED
BRIDGE
1/4 MILE



LEGAL LOAD

LIMIT

6,000

POUNDS

**WEIGHT
LIMIT
3
TONS**



LEGAL LOAD
LIMIT
6,000
POUNDS

POSTED
BRIDGE
2 MILES

0151
0807

WEIGHT
LIMIT
3
TONS





WEIGHT
LIMIT
3
TONS

←



ROAD
CLOSED





STOP

ROAD
CLOSED

SPEED
LIMIT
35
THROUGH
WAY
BEGINS
HERE

WEIGHT
LIMIT
3
TONS

POSTED
BRIDGE

























