



13-6"

LEGAL LOAD
LIMIT
24,000
POUNDS













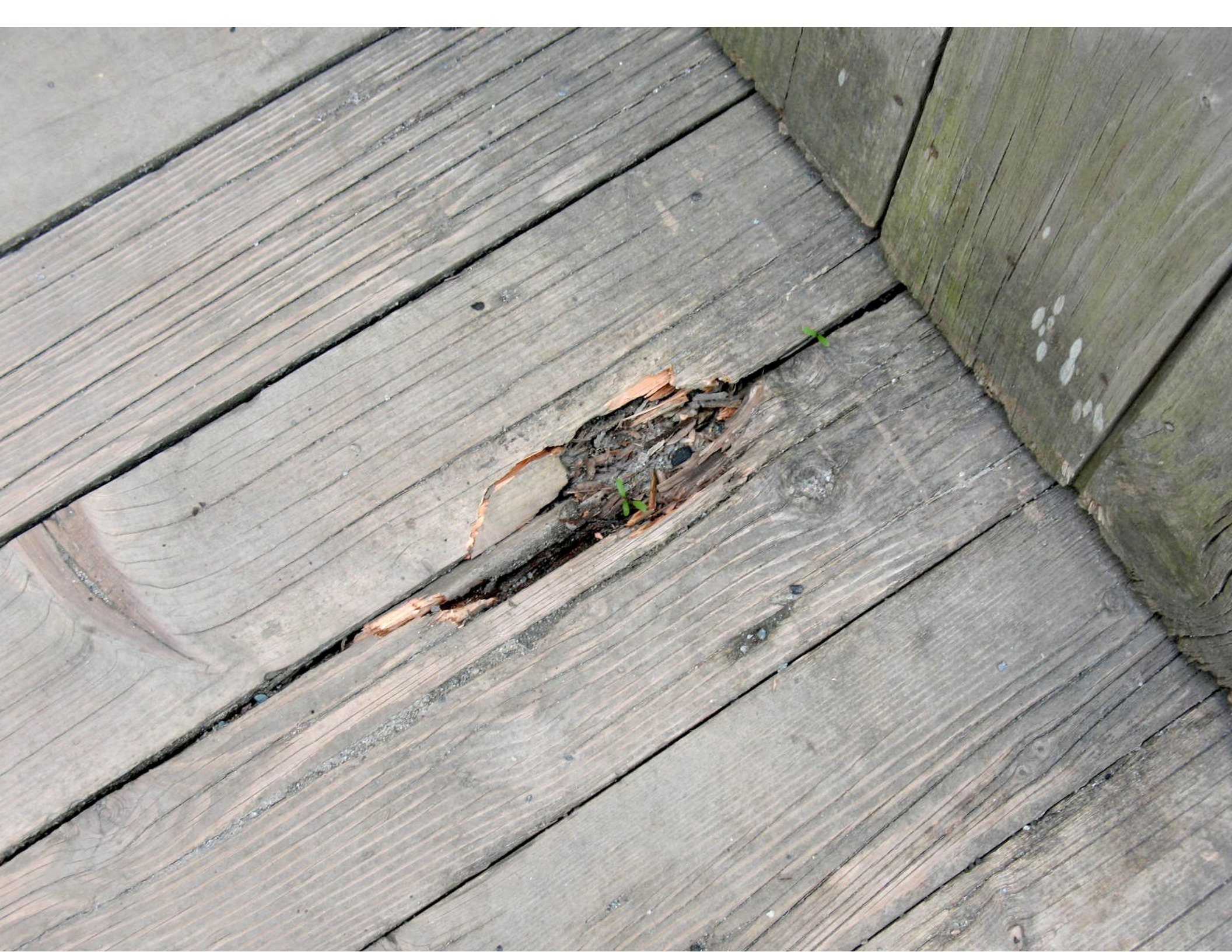
QUECHEE

13'-6"

LEGAL LOAD
LIMIT
24 000
POUNDS







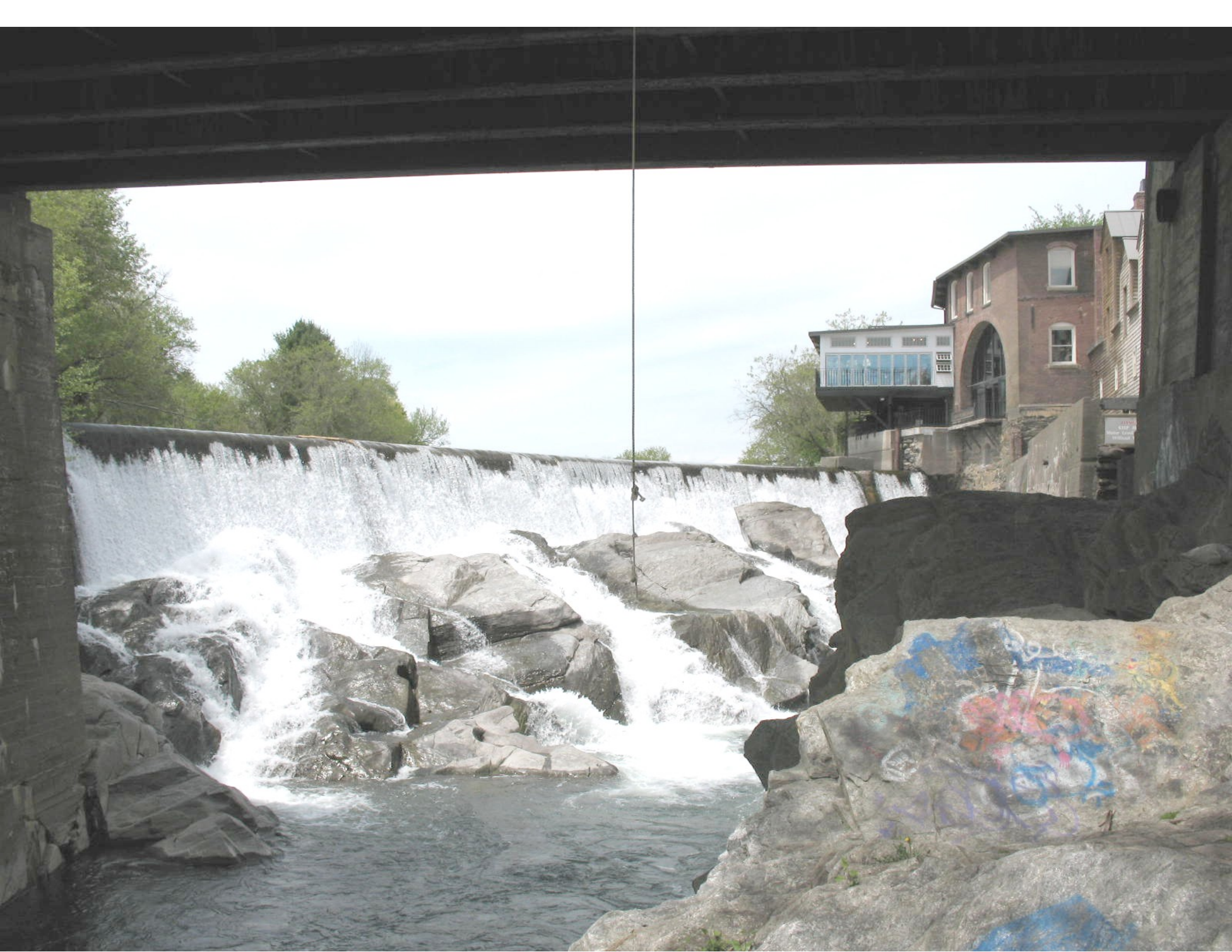














Red graffiti tag, possibly "MAD" or "MAD" with a crown-like symbol above it.

MAD

WOODS
2002





















BILLETTER

GRAFFITI: A large piece of graffiti in black and blue on the concrete wall, featuring stylized letters and a central figure.

GRAFFITI: Blue graffiti on a lower concrete section, including the letters "ED" and "OK".

GRAFFITI: A circular graffiti piece on the stone wall, possibly depicting a face or a logo.