



DSCN4251

Looking South to North



DSCN4252

Looking South to East

PB PARSONS BRINCKERHOFF
 QUADE and DOUGLAS, Inc.
 180. 75 Arlington St., Boston, MA

Drawing Title
NEW ENGLAND CENTRAL RAILROAD
 TH-43



Power Service Meter No.: _____
 Type Roadway Material: _____
 Railweight in Crossing: _____
 Roundel Size: _____

Railroad Crossing		City/Town	U.S. DOT. NO.	County
MP: 15.79		ALBURG	900601U	
By:	Check By:	Drawn By:	Scale:	Date:
AE	RFO	AE	NTS	09-15-01

CN-102



DSCN4253

Looking South to West



DSCN4254

Looking North to South

PR PARSONS BRINCKERHOFF
 QUADE and DOUGLAS, Inc.
 75 Arlington St., Boston, MA

Drawing Title
NEW ENGLAND CENTRAL RAILROAD
 TH-43



Power Service Meter No.: _____
 Type Roadway Material: _____
 Railweight in Crossing: _____
 Roundel Size: _____

Railroad Crossing	City/Town	U.S. DOT. NO.	County
MP: 15.79	ALBURG	900601U	
By: AE	Check By: RFO	Drawn By: AE	Scale: NTS
			Date: 09-15-01

CN-102



DSCN4255

Looking North to West



DSCN4256

Looking North to East

PB PARSONS BRINCKERHOFF
 QUADE and DOUGLAS, Inc.
 75 Arlington St., Boston, MA

Power Service Meter No.: _____
 Type Roadway Material: _____
 Railwight in Crossing: _____
 Roundel Size: _____

Drawing Title
NEW ENGLAND CENTRAL RAILROAD
 TH-43



Railroad Crossing	City/Town	U.S. DOT. NO.	County
MP: 15.79	ALBURG	900601U	
By: AE	Check By: RFO	Drawn By: AE	Scale: NTS
			Date: 09-15-01

CN-102



DSCN4257

Looking West to East



DSCN4258

Looking West to South

PB PARSONS BRINCKERHOFF
 QUADE and DOUGLAS, Inc.
 188, 75 Arlington St., Boston, MA

Drawing Title
NEW ENGLAND CENTRAL RAILROAD
 TH-43



Power Service Meter No.: _____
 Type Roadway Material: _____
 Railweight in Crossing: _____
 Roundel Size: _____

Railroad Crossing		City/Town	U.S. DOT. NO.	County
MP:	15.79	ALBURG	900601U	
By:	Check By:	Drawn By:	Scale:	Date:
AE	RFO	AE	NTS	09-15-01

CN-102



DSCN4259

Looking West to North



DSCN4260

Looking East to West

PB PARSONS BRINCKERHOFF
 QUADE and DOUGLAS, Inc.
 128, 75 Arlington St., Boston, MA

Drawing Title
NEW ENGLAND CENTRAL RAILROAD
 TH-43



Power Service Meter No.: _____
 Type Roadway Material: _____
 Railweight in Crossing: _____
 Roundel Size: _____

Railroad Crossing		City/Town	U.S. DOT. NO.	County
MP: 15.79		ALBURG	900601U	
By:	Check By:	Drawn By:	Scale:	Date:
AE	RFO	AE	NTS	09-15-01

CN-102



DSCN4261

Looking East to South



DSCN4262

Looking East to North

PB PARSONS BRINCKERHOFF
 QUADE and DOUGLAS, Inc.
 75 Arlington St., Boston, MA

Drawing Title
NEW ENGLAND CENTRAL RAILROAD
 TH-43



Power Service Meter No.: _____
 Type Roadway Material: _____
 Railwight in Crossing: _____
 Roundel Size: _____

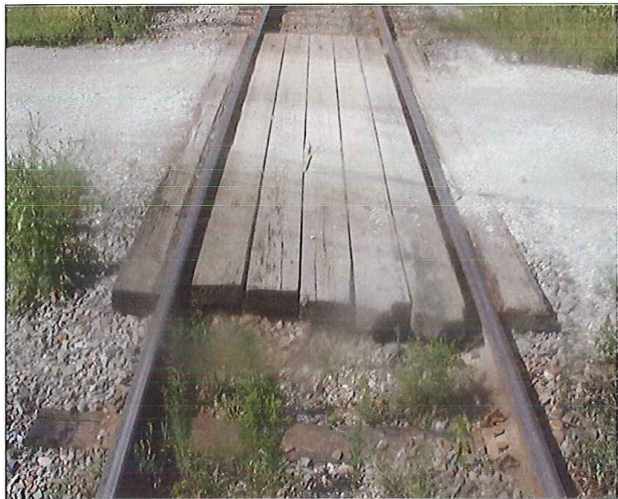
Railroad Crossing	City/Town	U.S. DOT. NO.	County
MP: 15.79	ALBURG	900601U	
By: AE	Check By: RFO	Drawn By: AE	Scale: NTS
			Date: 09-15-01

CN-102



DSCN4263

Looking South to North



DSCN4264

Looking South to North

PB PARSONS BRINCKERHOFF
 QUADE and DOUGLAS, Inc.
 188. 75 Arlington St., Boston, MA

Drawing Title
NEW ENGLAND CENTRAL RAILROAD
 TH-43



Power Service Meter No.: _____
 Type Roadway Material: _____
 Railweight in Crossing: _____
 Roundel Size: _____

Railroad Crossing		City/Town	U.S. DOT. NO.	County
MP: 15.79		ALBURG	900601U	
By:	Check By:	Drawn By:	Scale:	Date:
AE	RFO	AE	NTS	09-15-01

CN-102





DSCN4265

Looking South to North



DSCN4266

Looking South to North

 PARSONS BRINCKERHOFF QUADE and DOUGLAS, Inc. 199. 75 Arlington St., Boston, MA	Drawing Title NEW ENGLAND CENTRAL RAILROAD TH-43				
	Power Service Meter No.: _____ Type Roadway Material: _____ Railweight in Crossing: _____ Roundel Size: _____	Railroad Crossing MP: 15.79	City/Town ALBURG	U.S. DOT. NO. 900601U	
	By: AE	Check By: RFO	Drawn By: AE	Scale: NTS	Date: 09-15-01

CN-102