



DSCN4013

Looking South to North



DSCN4014

Looking South to East

PB PARSONS BRINCKERHOFF
 QUADE and DOUGLAS, Inc.
 199, 75 Arlington St., Boston, MA

Drawing Title
NEW ENGLAND CENTRAL RAILROAD
 INDUSTRIAL PARK RD



Power Service Meter No.: _____
 Type Roadway Material: _____
 Railweight in Crossing: _____
 Roundel Size: _____

Railroad Crossing		City/Town	U.S. DOT. NO.	County
MP:	131	ST. ALBANS	900596A	
By:	Check By:	Drawn By:	Scale:	Date:
AE	RFO	AE	NTS	09-15-01

NC-169



DSCN4015

Looking South to West



DSCN4016

Looking North to South

PB PARSONS BRINCKERHOFF
 QUADE and DOUGLAS, Inc.
 129. 75 Arlington St., Boston, MA

Drawing Title
NEW ENGLAND CENTRAL RAILROAD
 INDUSTRIAL PARK RD



Power Service Meter No.: _____
 Type Roadway Material: _____
 Railweight in Crossing: _____
 Roundel Size: _____

Railroad Crossing		City/Town	U.S. DOT. NO.	County
MP:	131	ST. ALBANS	900596A	
By:	Check By:	Drawn By:	Scale:	Date:
AE	RFO	AE	NTS	09-15-01

NC-169



DSCN4017

Looking North to West



DSCN4018

Looking North to East

PB PARSONS BRINCKERHOFF
 QUADE and DOUGLAS, Inc.
 199, 75 Arlington St., Boston, MA

Drawing Title
NEW ENGLAND CENTRAL RAILROAD
 INDUSTRIAL PARK RD



Power Service Meter No.: _____
 Type Roadway Material: _____
 Railweight in Crossing: _____
 Roundel Size: _____

Railroad Crossing		City/Town	U.S. DOT. NO.	County
MP:	131	ST. ALBANS	900596A	
By:	Check By:	Drawn By:	Scale:	Date:
AE	RFO	AE	NTS	09-15-01

NC-169



DSCN4019

Looking West to East



DSCN4020

Looking West to South

PB PARSONS BRINCKERHOFF
 QUADE and DOUGLAS, Inc.
 129. 75 Arlington St., Boston, MA

Power Service Meter No.: _____
 Type Roadway Material: _____
 Railweight in Crossing: _____
 Roundel Size: _____

Drawing Title
NEW ENGLAND CENTRAL RAILROAD
INDUSTRIAL PARK RD



Railroad Crossing		City/Town	U.S. DOT. NO.	County
MP: 131		ST. ALBANS	900596A	
By: AE	Check By: RFO	Drawn By: AE	Scale: NTS	Date: 09-15-01

NC-169



DSCN4021

Looking West to North



DSCN4022

Looking East to West

PB PARSONS BRINCKERHOFF
 QUADE and DOUGLAS, Inc.
 129. 75 Arlington St., Boston, MA

Drawing Title
NEW ENGLAND CENTRAL RAILROAD
 INDUSTRIAL PARK RD



Power Service Meter No.: _____
 Type Roadway Material: _____
 Railweight in Crossing: _____
 Roundel Size: _____

Railroad Crossing		City/Town	U.S. DOT. NO.	County
MP:	131	ST. ALBANS	900596A	
By:	Check By:	Drawn By:	Scale:	Date:
AE	RFO	AE	NTS	09-15-01

NC-169



DSCN4023

Looking East to North



DSCN4024

Looking East to South

PB PARSONS BRINCKERHOFF
 QUADE and DOUGLAS, Inc.
 188, 75 Arlington St., Boston, MA

Drawing Title
NEW ENGLAND CENTRAL RAILROAD
INDUSTRIAL PARK RD



Power Service Meter No.: _____
 Type Roadway Material: _____
 Railweight in Crossing: _____
 Roundel Size: _____

Railroad Crossing		City/Town	U.S. DOT. NO.	County
MP:	131	ST. ALBANS	900596A	
By:	Check By:	Drawn By:	Scale:	Date:
AE	RFO	AE	NTS	09-15-01

NC-169



DSCN4025

Looking South to North



DSCN4026

Looking South to North

PB PARSONS BRINCKERHOFF
 QUADE and DOUGLAS, Inc.
 128, 75 Arlington St., Boston, MA

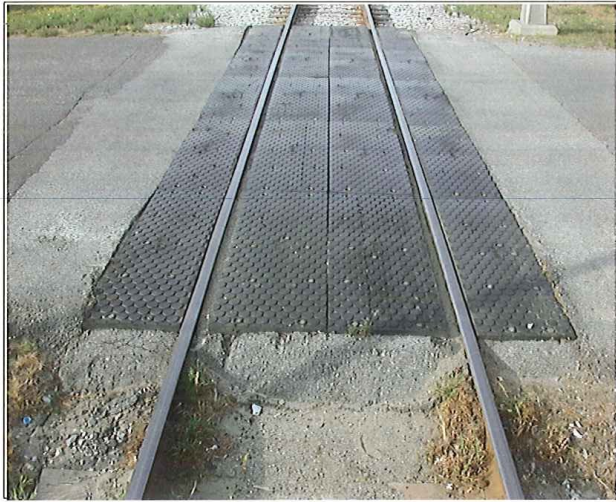
Drawing Title
NEW ENGLAND CENTRAL RAILROAD
 INDUSTRIAL PARK RD



Power Service Meter No.: _____
 Type Roadway Material: _____
 Railweight in Crossing: _____
 Roundel Size: _____

Railroad Crossing		City/Town	U.S. DOT. NO.	County
MP: 131	ST. ALBANS	900596A		
By: AE	Check By: RFO	Drawn By: AE	Scale: NTS	Date: 09-15-01

NC-169



DSCN4027

Looking North to South, Eastbound Lane



DSCN4028

Looking South to North, Westbound Lane

PB PARSONS BRINCKERHOFF
 QUADE and DOUGLAS, Inc.
 128. 75 Arlington St., Boston, MA

Drawing Title
NEW ENGLAND CENTRAL RAILROAD
 INDUSTRIAL PARK RD



Power Service Meter No.: _____
 Type Roadway Material: _____
 Railweight in Crossing: _____
 Roundel Size: _____

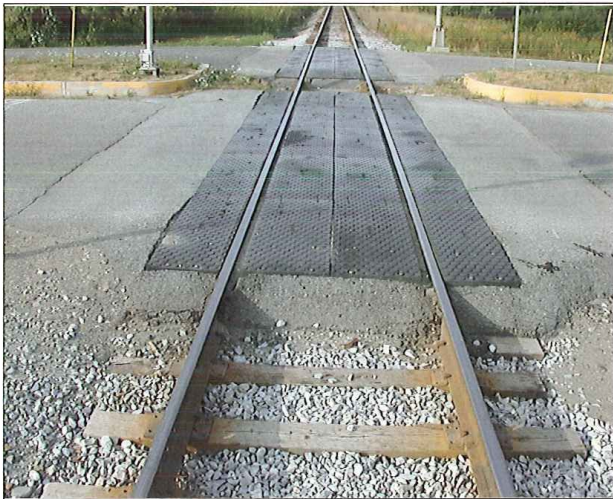
Railroad Crossing		City/Town	U.S. DOT. NO.	County
MP:	131	ST. ALBANS	900596A	
By:	Check By:	Drawn By:	Scale:	Date:
AE	RFO	AE	NTS	09-15-01

NC-169



DSCN4029

Looking North to South



DSCN4030

Looking South to North

PB PARSONS BRINCKERHOFF
 QUADE and DOUGLAS, Inc.
 75 Arlington St., Boston, MA

Drawing Title
NEW ENGLAND CENTRAL RAILROAD
INDUSTRIAL PARK RD



Power Service Meter No.: _____
 Type Roadway Material: _____
 Railweight in Crossing: _____
 Roundel Size: _____



Railroad Crossing	City/Town	U.S. DOT. NO.	County
MP: 131	ST. ALBANS	900596A	
By: AE	Check By: RFO	Drawn By: AE	Scale: NTS
		Date: 09-15-01	

NC-169



DSCN4031

Northeast Quadrant

 PARSONS BRINCKERHOFF QUADE and DOUGLAS, Inc. 122, 75 Arlington St., Boston, MA	Drawing Title NEW ENGLAND CENTRAL RAILROAD INDUSTRIAL PARK RD				
	Power Service Meter No.: _____ Type Roadway Material: _____ Railweight In Crossing: _____ Roundel Size: _____	Railroad Crossing MP: 131	City/Town ST. ALBANS	U.S. DOT. NO. 900596A	
By: AE	Check By: RFO	Drawn By: AE	Scale: NTS	Date: 09-15-01	