





DSCN1627

LOOKING FROM SOUTH TO NORTH



DSCN1628

LOOKING FROM SOUTH TO EAST

 PARSONS, BRINCKERHOFF, QUADE & DOUGLAS, INC. 75 Arlington St., Boston, MA	Drawing Title NORTHERN VERMONT RAILROAD LYNDONVILLE SUBDIVISION BURKE HOLLOW RD				
	Power Service Meter No.: _____ Type Roadway Material: _____ Railweight in Crossing: _____ Roundel Size: _____	Railroad Crossing MP: 27.85	City/Town WEST BURKE	U.S. DOT. NO. 850-914U	
	By: _____ RO	Check By: _____ MYM	Drawn By: _____ Scale: _____ NTS	Date: _____ 4-17-01	NV-44-01





DSCN1629

LOOKING FROM SOUTH TO WEST



LOOKING FROM NORTH TO SOUTH



 PARSONS, BRINCKERHOFF, QUADE & DOUGLAS, INC. 75 Arlington St., Boston, MA	Drawing Title NORTHERN VERMONT RAILROAD LYNDONVILLE SUBDIVISION BURKE HOLLOW RD				
	Power Service Meter No.: _____ Type Roadway Material: _____ Railweight in Crossing: _____ Roundel Size: _____	Railroad Crossing MP: 27.85	City/Town WEST BURKE	U.S. DOT. NO. 850-914U	
By: _____ RO		Check By: _____ MYM	Drawn By: _____ Scale: _____ NTS	Date: _____ 4-17-01	NV-44-02



LOOKING FROM NORTH TO EAST



LOOKING FROM NORTH TO WEST



 PARSONS, BRINCKERHOFF, QUADE & DOUGLAS, INC. 75 Arlington St., Boston, MA	Drawing Title NORTHERN VERMONT RAILROAD LYNDONVILLE SUBDIVISION BURKE HOLLOW RD				
	Power Service Meter No.: _____ Type Roadway Material: _____ Railweight in Crossing: _____ Roundel Size: _____	Railroad Crossing MP: 27.85	City/Town WEST BURKE	U.S. DOT. NO. 850-914U	
	By: RO	Check By:	Drawn By: MYM	Scale: NTS	Date:



LOOKING FROM EAST TO WEST



LOOKING FROM EAST TO NORTH



 PARSONS, BRINCKERHOFF, QUADE & DOUGLAS, INC. 75 Arlington St., Boston, MA	Drawing Title NORTHERN VERMONT RAILROAD LYNDONVILLE SUBDIVISION BURKE HOLLOW RD				
	Power Service Meter No.: _____ Type Roadway Material: _____ Railweight in Crossing: _____ Roundel Size: _____	Railroad Crossing MP: 27.85	City/Town WEST BURKE	U.S. DOT. NO. 850-914U	
	By: RO	Check By:	Drawn By: MYM	Scale: NTS	Date: 4-17-01
	NV-44-04				



LOOKING FROM EAST TO SOUTH



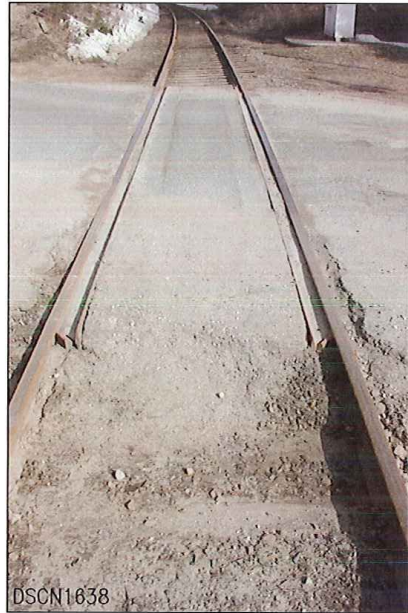
LOOKING FROM WEST TO EAST

 PARSONS, BRINCKERHOFF, QUADE & DOUGLAS, INC. 75 Arlington St., Boston, MA	Drawing Title NORTHERN VERMONT RAILROAD LYNDONVILLE SUBDIVISION BURKE HOLLOW RD					
	Power Service Meter No.: _____ Type Roadway Material: _____ Railweight in Crossing: _____ Roundel Size: _____	Railroad Crossing MP: 27.85	City/Town WEST BURKE		U.S. DOT. NO. 850-914U	County CALEDONIA
	By: RO	Check By: _____	Drawn By: MYM	Scale: NTS	Date: 4-17-01	NV-44-05





DSCN1637

LOOKING FROM WEST TO NORTH



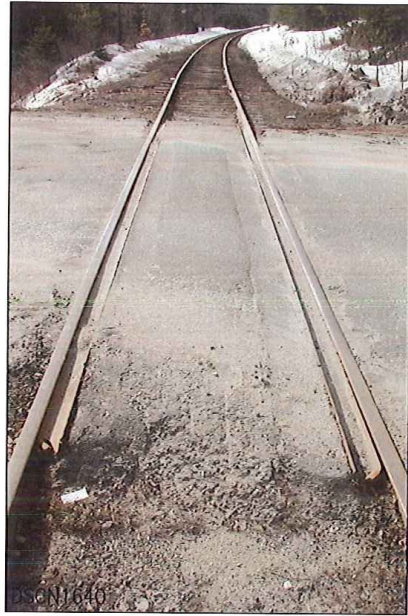
DSCN1638

LOOKING FROM SOUTH TO NORTH



 PARSONS, BRINCKERHOFF, QUADE & DOUGLAS, INC. 75 Arlington St., Boston, MA	Drawing Title NORTHERN VERMONT RAILROAD LYNDONVILLE SUBDIVISION BURKE HOLLOW RD				
	Power Service Meter No.: _____ Type Roadway Material: _____ Railweight in Crossing: _____ Roundel Size: _____	Railroad Crossing MP: 27.85	City/Town WEST BURKE	U.S. DOT. NO. 850-914U	
	By: RO	Check By: _____	Drawn By: MYM	Scale: NTS	Date: 4-17-01
					NV-44-06

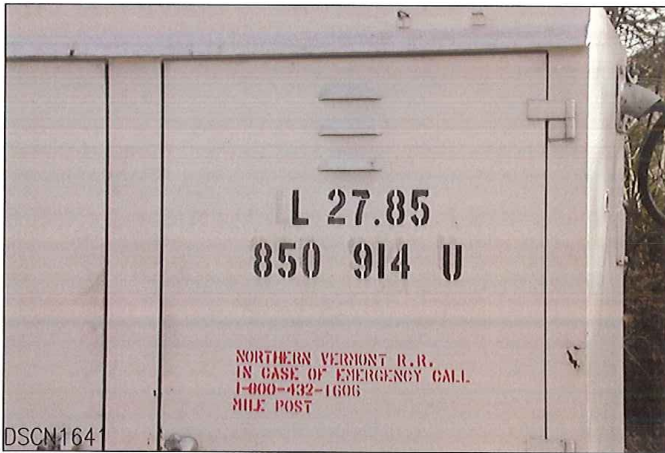


SOUTHWEST QUADRANT





LOOKING FROM NORTH TO SOUTH

 PARSONS, BRINCKERHOFF, QUADE & DOUGLAS, INC. 75 Arlington St., Boston, MA	Drawing Title NORTHERN VERMONT RAILROAD LYNDONVILLE SUBDIVISION BURKE HOLLOW RD				
	Power Service Meter No.: _____ Type Roadway Material: _____ Railweight in Crossing: _____ Roundel Size: _____	Railroad Crossing MP: 27.85	City/Town WEST BURKE		U.S. DOT. NO. 850-914U
	By: RO	Check By:	Drawn By: MYM	Scale: NTS	Date: 4-17-01
NV-44-07					



NORTHEAST QUADRANT

 PARSONS, BRINCKERHOFF, QUADE & DOUGLAS, INC. 75 Arlington St., Boston, MA	Drawing Title NORTHERN VERMONT RAILROAD LYNDONVILLE SUBDIVISION BURKE HOLLOW RD				
	Power Service Meter No.: _____ Type Roadway Material: _____ Railweight in Crossing: _____ Roundel Size: _____	Railroad Crossing MP: 27.85	City/Town WEST BURKE	U.S. DOT. NO. 850-914U	
	By: RO	Check By:	Drawn By: MYM	Scale: NTS	