





DSCN1642

LOOKING FROM SOUTH TO NORTH



DSCN1643

LOOKING FROM SOUTH TO WEST



 <b>PARSONS, BRINCKERHOFF, QUADE &amp; DOUGLAS, INC.</b> 75 Arlington St., Boston, MA	Drawing Title <b>NORTHERN VERMONT RAILROAD          LYNDONVILLE SUBDIVISION          VT RTE 5</b>				
	Power Service Meter No.: _____ Type Roadway Material: _____ Railweight in Crossing: _____ Roundel Size: _____	Railroad Crossing <b>MP: 27.60</b>	City/Town <b>WEST BURKE</b>		U.S. DOT. NO. <b>850-913M</b>
	By: RO	Check By:	Drawn By: MYM	Scale: NTS	Date: 4-17-01
	<b>NV-45-01</b>				



LOOKING FROM SOUTH TO EAST



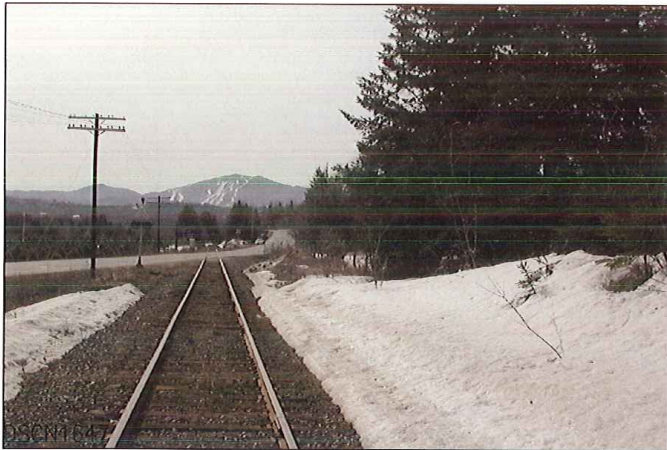
LOOKING FROM NORTH TO SOUTH

 <b>PARSONS, BRINCKERHOFF, QUADE &amp; DOUGLAS, INC.</b> 75 Arlington St., Boston, MA	Drawing Title <b>NORTHERN VERMONT RAILROAD LYNDONVILLE SUBDIVISION VT RTE 5</b>				
	Power Service Meter No.: _____ Type Roadway Material: _____ Railweight in Crossing: _____ Roundel Size: _____	Railroad Crossing <b>MP: 27.60</b>	City/Town WEST BURKE		U.S. DOT. NO. <b>850-913M</b>
By: RO		Check By:	Drawn By: MYM	Scale: NTS	Date: 4-17-01
<b>NV-45-02</b>					





DSCN1646

LOOKING FROM NORTH TO EAST



DSCN1647

LOOKING FROM NORTH TO WEST

 <b>PARSONS, BRINCKERHOFF, QUADE &amp; DOUGLAS, INC.</b> 75 Arlington St., Boston, MA	Drawing Title <b>NORTHERN VERMONT RAILROAD LYNDONVILLE SUBDIVISION VT RTE 5</b>					
	Power Service Meter No.: _____ Type Roadway Material: _____ Railweight in Crossing: _____ Roundel Size: _____	Railroad Crossing <b>MP: 27.60</b>	City/Town <b>WEST BURKE</b>		U.S. DOT. NO. <b>850-913M</b>	County <b>CALEDONIA</b>
	By: <b>RO</b>	Check By: _____	Drawn By: <b>MYM</b>	Scale: <b>NTS</b>	Date: <b>4-17-01</b>	<b>NV-45-03</b>





DSCN1648

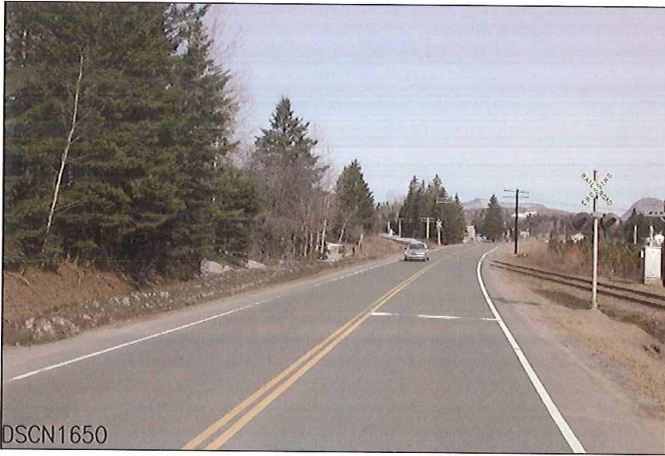
LOOKING FROM WEST TO EAST



DSCN1649

LOOKING FROM WEST TO SOUTH

 <b>PARSONS, BRINCKERHOFF, QUADE &amp; DOUGLAS, INC.</b> 75 Arlington St., Boston, MA	Drawing Title <b>NORTHERN VERMONT RAILROAD LYNDONVILLE SUBDIVISION VT RTE 5</b>					
	Power Service Meter No.: _____ Type Roadway Material: _____ Railweight in Crossing: _____ Roundel Size: _____	Railroad Crossing <b>MP: 27.60</b>	City/Town <b>WEST BURKE</b>		U.S. DOT. NO. <b>850-913M</b>	County <b>CALEDONIA</b>
	By: <b>RO</b>	Check By: _____	Drawn By: <b>MYM</b>	Scale: <b>NTS</b>	Date: <b>4-17-01</b>	<b>NV-45-04</b>





DSCN1650

LOOKING FROM WEST TO NORTH



DSCN1651

LOOKING FROM EAST TO WEST

 <b>PARSONS, BRINCKERHOFF, QUADE &amp; DOUGLAS, INC.</b> 75 Arlington St., Boston, MA	Drawing Title <b>NORTHERN VERMONT RAILROAD LYNDONVILLE SUBDIVISION VT RTE 5</b>				
	Power Service Meter No.: _____ Type Roadway Material: _____ Railweight in Crossing: _____ Roundel Size: _____	Railroad Crossing MP: 27.60	City/Town WEST BURKE	U.S. DOT. NO. 850-913M	
	By: RO	Check By: MYM	Scale: NTS	Date: 4-17-01	<b>NV-45-05</b>





DSCN1652

LOOKING FROM EAST TO SOUTH



DSCN1653

LOOKING FROM EAST TO NORTH

 <b>PARSONS, BRINCKERHOFF, QUADE &amp; DOUGLAS, INC.</b> 75 Arlington St., Boston, MA	Drawing Title <b>NORTHERN VERMONT RAILROAD LYNDONVILLE SUBDIVISION VT RTE 5</b>						
	Power Service Meter No.: _____ Type Roadway Material: _____ Railweight in Crossing: _____ Roundel Size: _____	Railroad Crossing <b>MP: 27.60</b>	City/Town <b>WEST BURKE</b>	U.S. DOT. NO. <b>850-913M</b>		County <b>CALEDDONIA</b>	
		By: <b>RO</b>	Check By: _____	Drawn By: <b>MYM</b>	Scale: <b>NTS</b>	Date: <b>4-17-01</b>	<b>NV-45-06</b>





DSCN1654

SOUTH SIDE OF CROSSING



DSCN1655

LOOKING FROM SOUTH TO NORTH



 <b>PARSONS, BRINCKERHOFF, QUADE &amp; DOUGLAS, INC.</b> 75 Arlington St., Boston, MA	Drawing Title <b>NORTHERN VERMONT RAILROAD LYNDONVILLE SUBDIVISION VT RTE 5</b>				
	Power Service Meter No.: _____ Type Roadway Material: _____ Railweight in Crossing: _____ Roundel Size: _____	Railroad Crossing <b>MP: 27.60</b>	City/Town WEST BURKE		U.S. DOT. NO. <b>850-913M</b>
	By: RO	Check By:	Drawn By: MYM	Scale: NTS	Date: 4-17-01
	<b>NV-45-07</b>				





LOOKING FROM SOUTH TO NORTH



LOOKING FROM NORTH TO SOUTH

 <b>PARSONS, BRINCKERHOFF, QUADE &amp; DOUGLAS, INC.</b> 75 Arlington St., Boston, MA	Drawing Title <b>NORTHERN VERMONT RAILROAD LYNDONVILLE SUBDIVISION VT RTE 5</b>				
	Power Service Meter No.: _____ Type Roadway Material: _____ Railweight in Crossing: _____ Roundel Size: _____	Railroad Crossing <b>MP: 27.60</b>	City/Town <b>WEST BURKE</b>	U.S. DOT. NO. <b>850-913M</b>	
By: <b>RO</b>		Check By: _____	Drawn By: <b>MYM</b>	Scale: <b>NTS</b>	Date: <b>4-17-01</b>
					<b>NV-45-08</b>



 <b>PARSONS, BRINCKERHOFF, QUADE &amp; DOUGLAS, INC.</b> 75 Arlington St., Boston, MA	Drawing Title <b>NORTHERN VERMONT RAILROAD LYNDONVILLE SUBDIVISION VT RTE 5</b>				
	Railroad Crossing MP: 27.60	City/Town WEST BURKE	U.S. DOT. NO. 850-913M	County CALEDONIA	
Power Service Meter No.: _____ Type Roadway Material: _____ Railweight in Crossing: _____ Roundel Size: _____	By: RO	Check By: _____	Drawn By: MYM	Scale: NTS	Date: 4-17-01