



LOOKING FROM SOUTH TO NORTH



LOOKING FROM SOUTH TO WEST

 PARSONS, BRINCKERHOFF, QUADE & DOUGLAS, INC. 75 Arlington St., Boston, MA	Drawing Title NORTHERN VERMONT RAILROAD LYNDONVILLE SUBDIVISION MAIN STREET				
	Power Service Meter No.: _____ Type Roadway Material: _____ Railweight in Crossing: _____ Roundel Size: _____	Railroad Crossing MP: 8.90	City/Town ORLEANS	U.S. DOT. NO. 850-879H	
	By: RO	Check By: _____	Drawn By: MYM	Scale: NTS	Date: 4-17-01
					NV-55_a-01





DSCN1819

LOOKING FROM SOUTH TO EAST



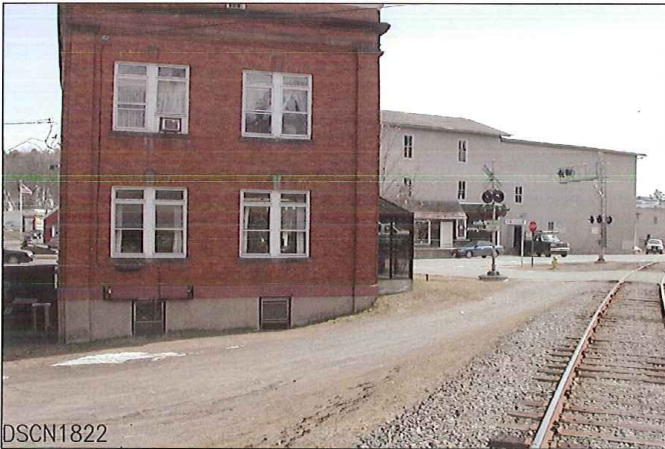
DSCN1820

LOOKING FROM NORTH TO SOUTH



 PARSONS, BRINCKERHOFF, QUADE & DOUGLAS, INC. 75 Arlington St., Boston, MA	Drawing Title NORTHERN VERMONT RAILROAD LYNDONVILLE SUBDIVISION MAIN STREET				
	Power Service Meter No.: _____ Type Roadway Material: _____ Railweight in Crossing: _____ Roundel Size: _____	Railroad Crossing MP: 8.90	City/Town ORLEANS	U.S. DOT. NO. 850-879H	
By: RO	Check By:	Drawn By: MYM	Scale: NTS	Date: 4-17-01	



LOOKING FROM NORTH TO WEST



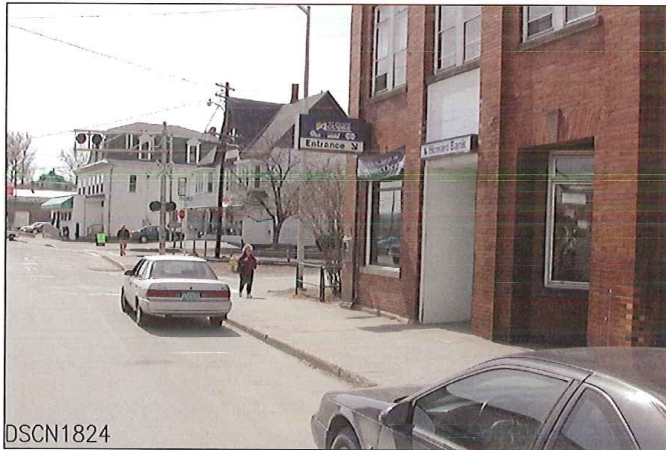
LOOKING FROM NORTH TO EAST

 PARSONS, BRINCKERHOFF, QUADE & DOUGLAS, INC. 75 Arlington St., Boston, MA	Drawing Title NORTHERN VERMONT RAILROAD LYNDONVILLE SUBDIVISION MAIN STREET				
	Power Service Meter No.: _____ Type Roadway Material: _____ Railweight in Crossing: _____ Roundel Size: _____	Railroad Crossing MP: 8.90	City/Town ORLEANS	U.S. DOT. NO. 850-879H	
By: RO	Check By:	Drawn By: MYM	Scale: NTS	Date: 4-17-01	





DSCN1823

LOOKING FROM EAST TO WEST



DSCN1824

LOOKING FROM EAST TO NORTH

 PARSONS, BRINCKERHOFF, QUADE & DOUGLAS, INC. 75 Arlington St., Boston, MA	Drawing Title NORTHERN VERMONT RAILROAD LYNDONVILLE SUBDIVISION MAIN STREET				
	Power Service Meter No.: _____ Type Roadway Material: _____ Railweight in Crossing: _____ Roundel Size: _____	Railroad Crossing MP: 8.90	City/Town ORLEANS		U.S. DOT. NO. 850-879H
	By: RO	Check By:	Drawn By: MYM	Scale: NTS	Date: 4-17-01
NV-55_a-04					





DSCN1829

LOOKING FROM WEST TO EAST



DSCN1830

LOOKING FROM WEST TO SOUTH

 PARSONS, BRINCKERHOFF, QUADE & DOUGLAS, INC. 75 Arlington St., Boston, MA	Drawing Title NORTHERN VERMONT RAILROAD LYNDONVILLE SUBDIVISION MAIN STREET				
	Power Service Meter No.: _____ Type Roadway Material: _____ Railweight in Crossing: _____ Roundel Size: _____	Railroad Crossing MP: 8.90	City/Town ORLEANS	U.S. DOT. NO. 850-879H	
	By: RO	Check By:	Drawn By: MYM	Scale: NTS	Date: 4-17-01





DSCN1831

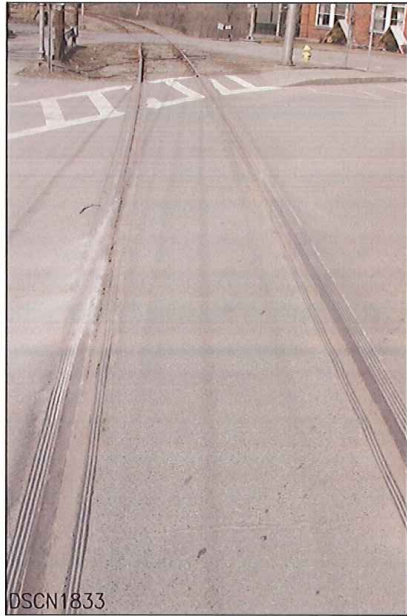
LOOKING FROM WEST TO NORTH



DSCN1832

LOOKING FROM SOUTH TO NORTH

 PARSONS, BRINCKERHOFF, QUADE & DOUGLAS, INC. 75 Arlington St., Boston, MA	Drawing Title NORTHERN VERMONT RAILROAD LYNDONVILLE SUBDIVISION MAIN STREET				
	Power Service Meter No.: _____ Type Roadway Material: _____ Railweight in Crossing: _____ Roundel Size: _____	Railroad Crossing MP: 8.90	City/Town ORLEANS	U.S. DOT. NO. 850-879H	
By: RO	Check By:	Drawn By: MYM	Scale: NTS	Date: 4-17-01	





DSCN1833

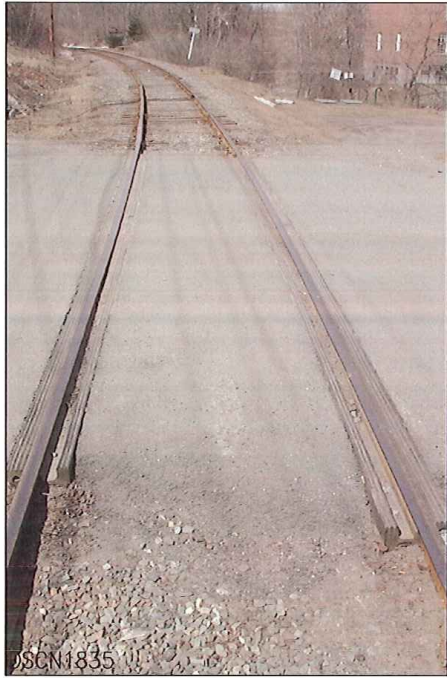
LOOKING FROM SOUTH TO NORTH



DSCN1834



LOOKING FROM NORTH TO SOUTH

 PARSONS, BRINCKERHOFF, QUADE & DOUGLAS, INC. 75 Arlington St., Boston, MA	Drawing Title NORTHERN VERMONT RAILROAD LYNDONVILLE SUBDIVISION MAIN STREET				
	Power Service Meter No.: _____ Type Roadway Material: _____ Railweight in Crossing: _____ Roundel Size: _____	Railroad Crossing MP: 8.90	City/Town ORLEANS	U.S. DOT. NO. 850-879H	
	By: RO	Check By: _____	Drawn By: MYM	Scale: NTS	Date: 4-17-01
	NV-55₀-07				



LOOKING FROM SOUTH TO NORTH

08CN1835

 PARSONS, BRINCKERHOFF, QUADE & DOUGLAS, INC. 75 Arlington St., Boston, MA	Drawing Title NORTHERN VERMONT RAILROAD LYNDONVILLE SUBDIVISION MAIN STREET				
	Railroad Crossing Type Roadway Material: _____ Railweight in Crossing: _____ Roundel Size: _____	City/Town MP: 8.90 ORLEANS	U.S. DOT. NO. 850-879H ORLEANS	County ORLEANS	
By: RO	Check By:	Drawn By: MYM	Scale: NTS	Date: 4-17-01	