





DSCN1873

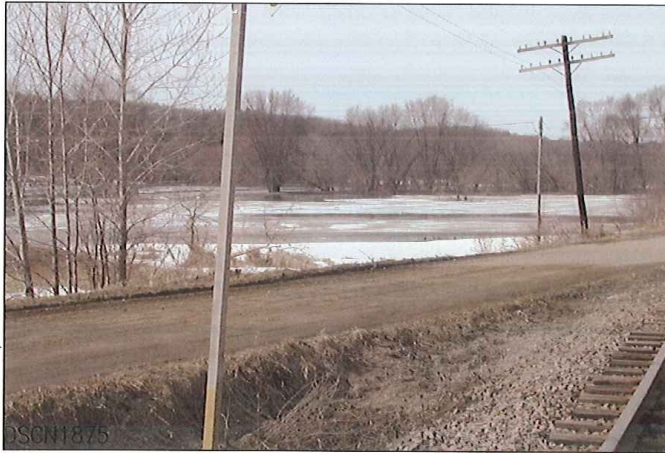
LOOKING FROM SOUTH TO NORTH



DSCN1874

LOOKING FROM SOUTH TO EAST



 PARSONS, BRINCKERHOFF, QUADE & DOUGLAS, INC. 75 Arlington St., Boston, MA	Drawing Title NORTHERN VERMONT RAILROAD LYNDONVILLE SUBDIVISION HAMEL'S XING				
	Power Service Meter No.: _____ Type Roadway Material: _____ Railweight in Crossing: _____ Roundel Size: _____	Railroad Crossing MP: 6.57	City/Town ORLEANS	U.S. DOT. NO. 850-871D	
By: RO	Check By:	Drawn By: MYM	Scale: NTS	Date: 4-17-01	



LOOKING FROM SOUTH TO WEST



LOOKING FROM NORTH TO SOUTH



 PARSONS, BRINCKERHOFF, QUADE & DOUGLAS, INC. 75 Arlington St., Boston, MA	Drawing Title NORTHERN VERMONT RAILROAD LYNDONVILLE SUBDIVISION HAMEL'S XING				
	Power Service Meter No.: _____ Type Roadway Material: _____ Railweight in Crossing: _____ Roundel Size: _____	Railroad Crossing MP: 6.57	City/Town ORLEANS	U.S. DOT. NO. 850-871D	
	By: RO	Check By:	Drawn By: MYM	Scale: NTS	Date: 4-17-01
	NV-57_b-02				



LOOKING FROM NORTH TO WEST



LOOKING FROM NORTH TO EAST

 PARSONS, BRINCKERHOFF, QUADE & DOUGLAS, INC. 75 Arlington St., Boston, MA	Drawing Title NORTHERN VERMONT RAILROAD LYNDONVILLE SUBDIVISION HAMEL'S XING				
	Power Service Meter No.: _____ Type Roadway Material: _____ Railweight in Crossing: _____ Roundel Size: _____	Railroad Crossing MP: 6.57	City/Town ORLEANS	U.S. DOT. NO. 850-871D	
By: RO Check By: _____		Drawn By: MYM	Scale: NTS	Date: 4-17-01	NV-57₆-03





DSCN1880

LOOKING FROM EAST TO WEST



DSCN1881

LOOKING FROM EAST TO NORTH

 PARSONS, BRINCKERHOFF, QUADE & DOUGLAS, INC. 75 Arlington St., Boston, MA	Drawing Title NORTHERN VERMONT RAILROAD LYNDONVILLE SUBDIVISION HAMEL'S XING					
	Railroad Crossing MP: 6.57	City/Town ORLEANS	U.S. DOT. NO. 850-871D		County ORLEANS	
Power Service Meter No.: _____ Type Roadway Material: _____ Railweight in Crossing: _____ Roundel Size: _____	By: RO	Check By: _____	Drawn By: MYM	Scale: NTS	Date: 4-17-01	NV-57_b-04





DSCN1882

LOOKING FROM EAST TO SOUTH



DSCN1883

LOOKING FROM WEST TO EAST



 PARSONS, BRINCKERHOFF, QUADE & DOUGLAS, INC. 75 Arlington St., Boston, MA	Drawing Title NORTHERN VERMONT RAILROAD LYNDONVILLE SUBDIVISION HAMEL'S XING				
	Power Service Meter No.: _____ Type Roadway Material: _____ Railweight in Crossing: _____ Roundel Size: _____	Railroad Crossing MP: 6.57	City/Town ORLEANS	U.S. DOT. NO. 850-871D	
By: RO	Check By:	Drawn By: MYM	Scale: NTS	Date: 4-17-01	



LOOKING FROM WEST TO NORTH



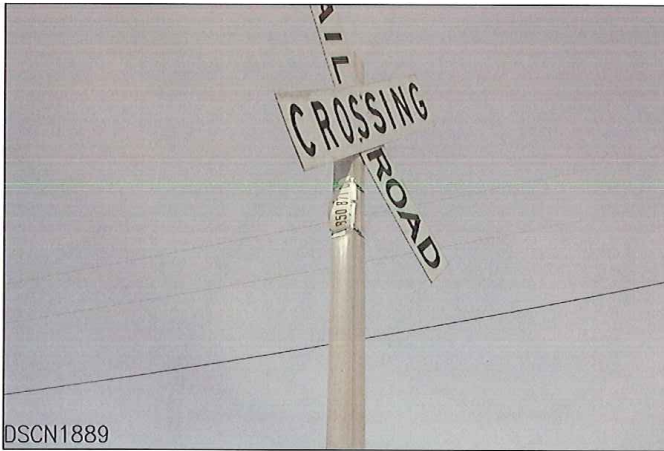
LOOKING FROM SOUTH TO NORTH

 PARSONS, BRINCKERHOFF, QUADE & DOUGLAS, INC. 75 Arlington St., Boston, MA	Drawing Title NORTHERN VERMONT RAILROAD LYNDONVILLE SUBDIVISION HAMEL'S XING				
	Power Service Meter No.: _____ Type Roadway Material: _____ Railweight in Crossing: _____ Roundel Size: _____	Railroad Crossing MP: 6.57	City/Town ORLEANS	U.S. DOT. NO. 850-871D	
By: RO		Check By: _____	Drawn By: MYM	Scale: NTS	Date: 4-17-01
					NV-57₆-06





DSCN1888

LOOKING FROM NORTH TO SOUTH



DSCN1889

SOUTHWEST QUADRANT

 PARSONS, BRINCKERHOFF, QUADE & DOUGLAS, INC. 75 Arlington St., Boston, MA	Drawing Title NORTHERN VERMONT RAILROAD LYNDONVILLE SUBDIVISION HA MEL'S XING				
	Power Service Meter No.: _____ Type Roadway Material: _____ Railweight in Crossing: _____ Roundel Size: _____	Railroad Crossing MP: 6.57	City/Town ORLEANS	U.S. DOT. NO. 850-871D	
	By: RO	Check By:	Drawn By: MYM	Scale: NTS	Date: 4-17-01
					NV-57-07

NV

201