





DSCN1933

LOOKING FROM SOUTH TO NORTH



DSCN1934

LOOKING FROM SOUTH TO EAST



 PARSONS, BRINCKERHOFF, QUADE & DOUGLAS, INC. 75 Arlington St., Boston, MA	Drawing Title NORTHERN VERMONT RAILROAD NEWPORT SUBDIVISION MARINA XING (FIFE DRIVE)				
	Power Service Meter No.: _____ Type Roadway Material: _____ Railweight in Crossing: _____ Roundel Size: _____	Railroad Crossing MP: 58.10	City/Town NEWPORT	U.S. DOT. NO. 847-919A	
By: RO	Check By: _____	Drawn By: MYM	Scale: NTS	Date: 4-17-01	



LOOKING FROM SOUTH TO WEST



LOOKING FROM NORTH TO SOUTH

 PARSONS, BRINCKERHOFF, QUADE & DOUGLAS, INC. 76 Arlington St., Boston, MA	Drawing Title				
	NORTHERN VERMONT RAILROAD NEWPORT SUBDIVISION MARINA XING (FIFE DRIVE)				
Power Service Meter No.: _____	Railroad Crossing	City/Town	U.S. DOT. NO.	County	
Type Roadway Material: _____	MP: 58.10	NEWPORT	847-919A	ORLEANS	
Railweight in Crossing: _____	By: RO	Check By:	Drawn By: MYM	Scale: NTS	Date: _____
Roundel Size: _____					4-17-01
					NV-60-02





DSCN1937

LOOKING FROM NORTH TO EAST



DSCN1938

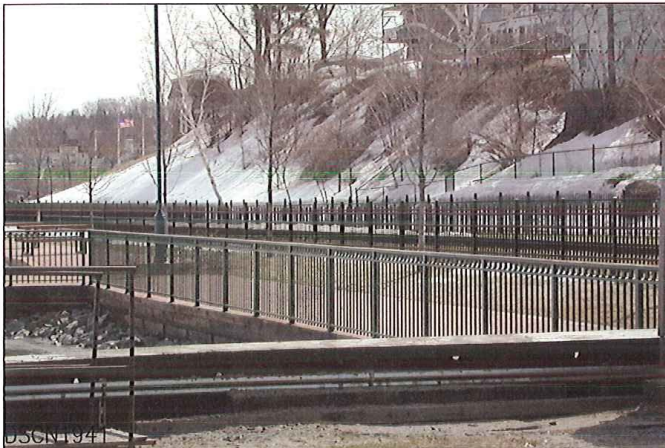
LOOKING FROM NORTH TO WEST

 PARSONS, BRINCKERHOFF, QUADE & DOUGLAS, INC. 75 Arlington St., Boston, MA	Drawing Title NORTHERN VERMONT RAILROAD NEWPORT SUBDIVISION MARINA XING (FIFE DRIVE)				
	Power Service Meter No.: _____ Type Roadway Material: _____ Railweight in Crossing: _____ Roundel Size: _____	Railroad Crossing MP: 58.10	City/Town NEWPORT	U.S. DOT. NO. 847-919A	
By: _____ Check By: _____ Drawn By: _____ MYM	Scale: NTS	Date: 4-17-01			





DSCN1940

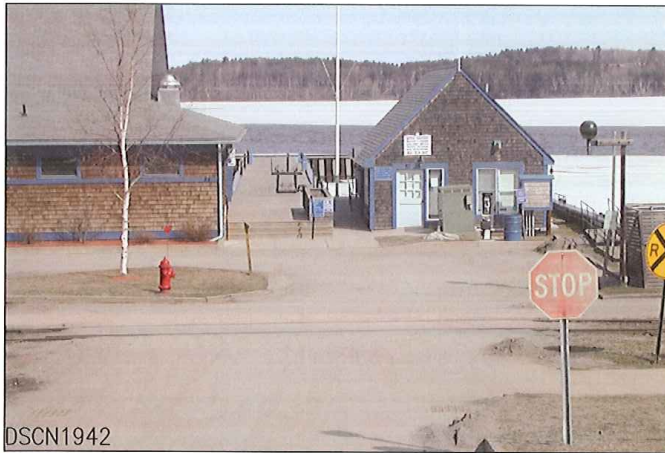
LOOKING FROM EAST TO NORTH



DSCN1941

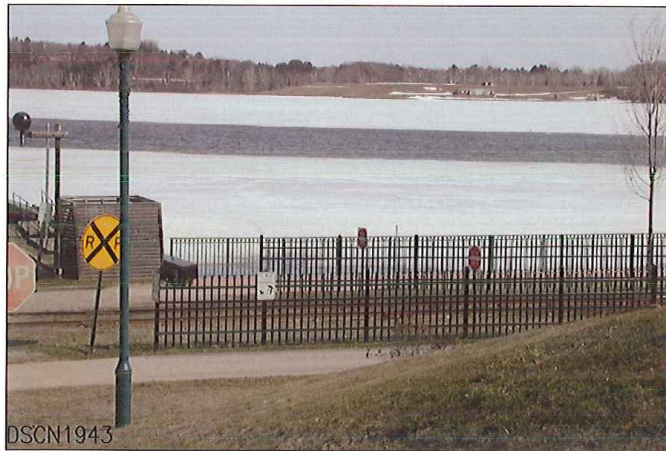
LOOKING FROM EAST TO SOUTH

 PARSONS, BRINCKERHOFF, QUADE & DOUGLAS, INC. 75 Arlington St., Boston, MA	Drawing Title NORTHERN VERMONT RAILROAD NEWPORT SUBDIVISION MARINA XING (FIFE DRIVE)				
	Power Service Meter No.: _____ Type Roadway Material: _____ Railweight in Crossing: _____ Roundel Size: _____	Railroad Crossing MP: 58.10	City/Town NEWPORT	U.S. DOT. NO. 847-919A	
By: RO Check By: _____		Drawn By: MYM	Scale: NTS	Date: 4-17-01	NV-60-04





DSCN1942

LOOKING FROM WEST TO EAST



DSCN1943

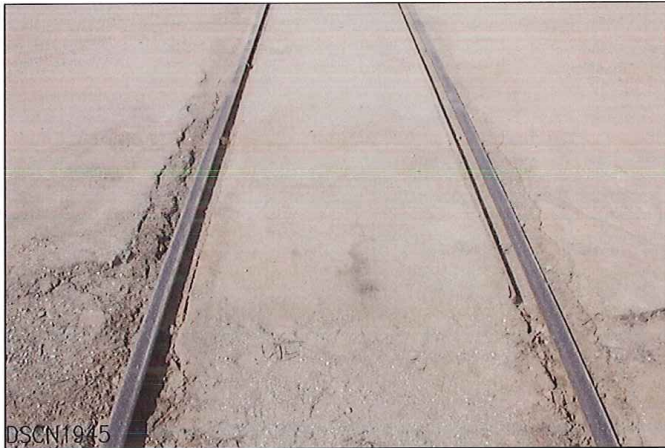
LOOKING FROM WEST TO SOUTH

 PARSONS, BRINCKERHOFF, QUADE & DOUGLAS, INC. 75 Arlington St., Boston, MA	Drawing Title NORTHERN VERMONT RAILROAD NEWPORT SUBDIVISION MARINA XING (FIFE DRIVE)				
	Power Service Meter No.: _____ Type Roadway Material: _____ Railweight in Crossing: _____ Roundel Size: _____	Railroad Crossing MP: 58.10	City/Town NEWPORT	U.S. DOT. NO. 847-919A	
	By: _____ RO	Check By: _____	Drawn By: _____ MYM	Scale: _____ NTS	Date: _____ 4-17-01
					NV-60-05





DSCN1944

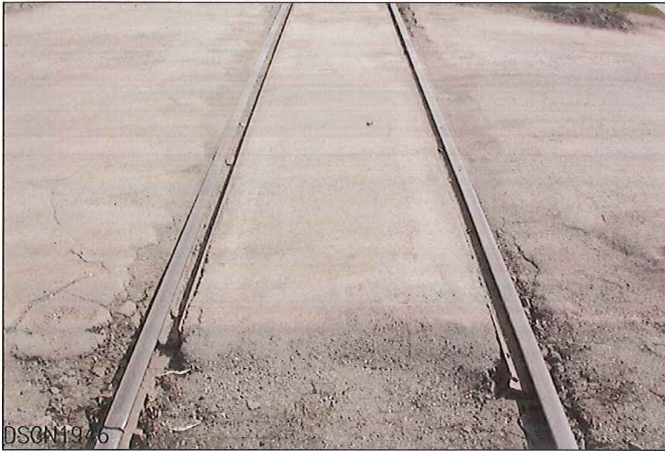
LOOKING FROM WEST TO NORTH





DSCN1945

LOOKING FROM SOUTH TO NORTH

 PARSONS, BRINCKERHOFF, QUADE & DOUGLAS, INC. 75 Arlington St., Boston, MA	Drawing Title NORTHERN VERMONT RAILROAD NEWPORT SUBDIVISION MARINA XING (FIFE DRIVE)			
	Power Service Meter No.: _____ Type Roadway Material: _____ Railweight in Crossing: _____ Roundel Size: _____	Railroad Crossing MP: 58.10	City/Town NEWPORT	
NV-60-06				Date: 4-17-01



LOOKING FROM NORTH TO SOUTH

 PARSONS, BRINCKERHOFF, QUADE & DOUGLAS, INC. 75 Arlington St., Boston, MA	Drawing Title NORTHERN VERMONT RAILROAD NEWPORT SUBDIVISION MARINA XING (FIFE DRIVE)				
	Railroad Crossing MP: 58.10	City/Town NEWPORT	U.S. DOT. NO. 847-919A	County ORLEANS	
Power Service Meter No.: _____ Type Roadway Material: _____ Railweight in Crossing: _____ Roundel Size: _____	By: RO	Check By: MYM	Scale: NTS	Date: 4-17-01	