





LOOKING FROM SOUTH TO NORTH



LOOKING FROM SOUTH TO EAST



 <b>PARSONS, BRINCKERHOFF, QUADE &amp; DOUGLAS, INC.</b> 75 Arlington St., Boston, MA	Drawing Title <b>NORTHERN VERMONT RAILROAD          NEWPORT SUBDIVISION          FIRE STATION XING</b>			
	Railroad Crossing MP: 50.70	City/Town NEWPORT CTR.	U.S. DOT. NO. 847-869V	
Power Service Meter No.: _____ Type Roadway Material: _____ Railweight in Crossing: _____ Roundel Size: _____	By: RO	Check By:	Drawn By: MYM Scale: NTS	Date: 4-17-01
				<b>NV-65-01</b>



LOOKING FROM SOUTH TO WEST



LOOKING FROM NORTH TO SOUTH



 <b>PARSONS, BRINCKERHOFF, QUADE &amp; DOUGLAS, INC.</b> 75 Arlington St., Boston, MA	Drawing Title <b>NORTHERN VERMONT RAILROAD NEWPORT SUBDIVISION FIRE STATION XING</b>				
	Power Service Meter No.: _____ Type Roadway Material: _____ Railweight in Crossing: _____ Roundel Size: _____	Railroad Crossing <b>MP: 50.70</b>	City/Town <b>NEWPORT CTR.</b>	U.S. DOT. NO. <b>847-869V</b>	
By: RO	Check By:	Drawn By: MYM	Scale: NTS		



LOOKING FROM NORTH TO WEST



LOOKING FROM NORTH TO EAST

 <b>PARSONS, BRINCKERHOFF, QUADE &amp; DOUGLAS, INC.</b> 75 Arlington St., Boston, MA	Drawing Title <b>NORTHERN VERMONT RAILROAD NEWPORT SUBDIVISION FIRE STATION XING</b>				
	Power Service Meter No.: _____ Type Roadway Material: _____ Railweight in Crossing: _____ Roundel Size: _____	Railroad Crossing MP: 50.70	City/Town NEWPORT CTR.	U.S. DOT. NO. 847-869V	
By: RO	Check By:	Drawn By: MYM	Scale: NTS	Date:	





DSCN2021

LOOKING FROM EAST TO WEST



DSCN2022

LOOKING FROM EAST TO NORTH



 <b>PARSONS, BRINCKERHOFF, QUADE &amp; DOUGLAS, INC.</b> 75 Arlington St., Boston, MA	Drawing Title <b>NORTHERN VERMONT RAILROAD NEWPORT SUBDIVISION FIRE STATION XING</b>				
	Power Service Meter No.: _____ Type Roadway Material: _____ Railweight in Crossing: _____ Roundel Size: _____	Railroad Crossing <b>MP: 50.70</b>	City/Town <b>NEWPORT CTR.</b>	U.S. DOT. NO. <b>847-869V</b>	
By: <b>RO</b>		Check By: _____	Drawn By: <b>MYM</b>	Scale: <b>NTS</b>	Date: <b>4-17-01</b>
					<b>NV-65-04</b>

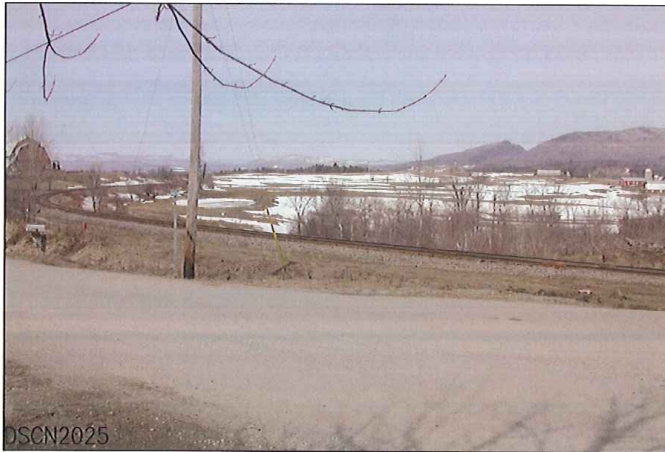


LOOKING FROM EAST TO SOUTH



LOOKING FROM WEST TO EAST



 <b>PARSONS, BRINCKERHOFF, QUADE &amp; DOUGLAS, INC.</b> 75 Arlington St., Boston, MA	Drawing Title <b>NORTHERN VERMONT RAILROAD NEWPORT SUBDIVISION FIRE STATION XING</b>				
	Power Service Meter No.: _____ Type Roadway Material: _____ Railweight in Crossing: _____ Roundel Size: _____	Railroad Crossing <b>MP: 50.70</b>	City/Town <b>NEWPORT CTR.</b>	U.S. DOT. NO. <b>847-869V</b>	
	By: <b>RO</b>	Check By: _____	Drawn By: <b>MYM</b>	Scale: <b>NTS</b>	Date: <b>4-17-01</b>

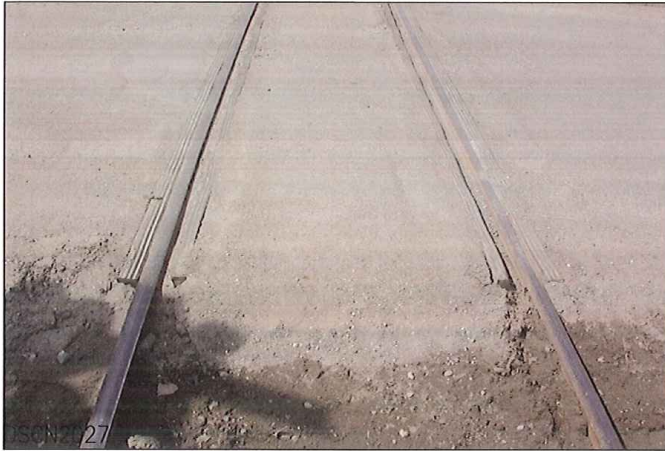


LOOKING FROM WEST TO NORTH



LOOKING FROM WEST TO SOUTH



 <b>PARSONS, BRINCKERHOFF, QUADE &amp; DOUGLAS, INC.</b> 75 Arlington St., Boston, MA	Drawing Title <b>NORTHERN VERMONT RAILROAD NEWPORT SUBDIVISION FIRE STATION XING</b>						
	Power Service Meter No.: _____ Type Roadway Material: _____ Railweight in Crossing: _____ Roundel Size: _____	Railroad Crossing <b>MP: 50.70</b>	City/Town <b>NEWPORT CTR.</b>	U.S. DOT. NO. <b>847-869V</b>		County <b>ORLEANS</b>	
		By: <b>RO</b>	Check By: _____	Drawn By: <b>MYM</b>	Scale: <b>NTS</b>	Date: <b>4-17-01</b>	<b>NV-65-06</b>



LOOKING FROM SOUTH TO NORTH





LOOKING FROM NORTH TO SOUTH

 <b>PARSONS, BRINCKERHOFF, QUADE &amp; DOUGLAS, INC.</b> 75 Arlington St., Boston, MA	Drawing Title <b>NORTHERN VERMONT RAILROAD NEWPORT SUBDIVISION FIRE STATION XING</b>				
	Power Service Meter No.: _____ Type Roadway Material: _____ Railweight In Crossing: _____ Roundel Size: _____	Railroad Crossing <b>MP: 50.70</b>	City/Town <b>NEWPORT CTR.</b>	U.S. DOT. NO. <b>847-869V</b>	
	By: <b>RO</b>	Check By: _____	Drawn By: <b>MYM</b>	Scale: <b>NTS</b>	Date: <b>4-17-01</b>
					<b>NV-65-07</b>



SOUTHEAST QUADRANT

 <b>PARSONS, BRINCKERHOFF, QUADE &amp; DOUGLAS, INC.</b> 75 Arlington St., Boston, MA	Drawing Title <b>NORTHERN VERMONT RAILROAD NEWPORT SUBDIVISION FIRE STATION XING</b>				
	Railroad Crossing MP: 50.70	City/Town NEWPORT CTR.	U.S. DOT. NO. 847-869V	County ORLEANS	
Power Service Meter No.: _____ Type Roadway Material: _____ Railweight in Crossing: _____ Roundel Size: _____	By: RO	Check By: _____	Drawn By: MYM	Scale: NTS	Date: 4-17-01