

RAILROAD  
CROSSING

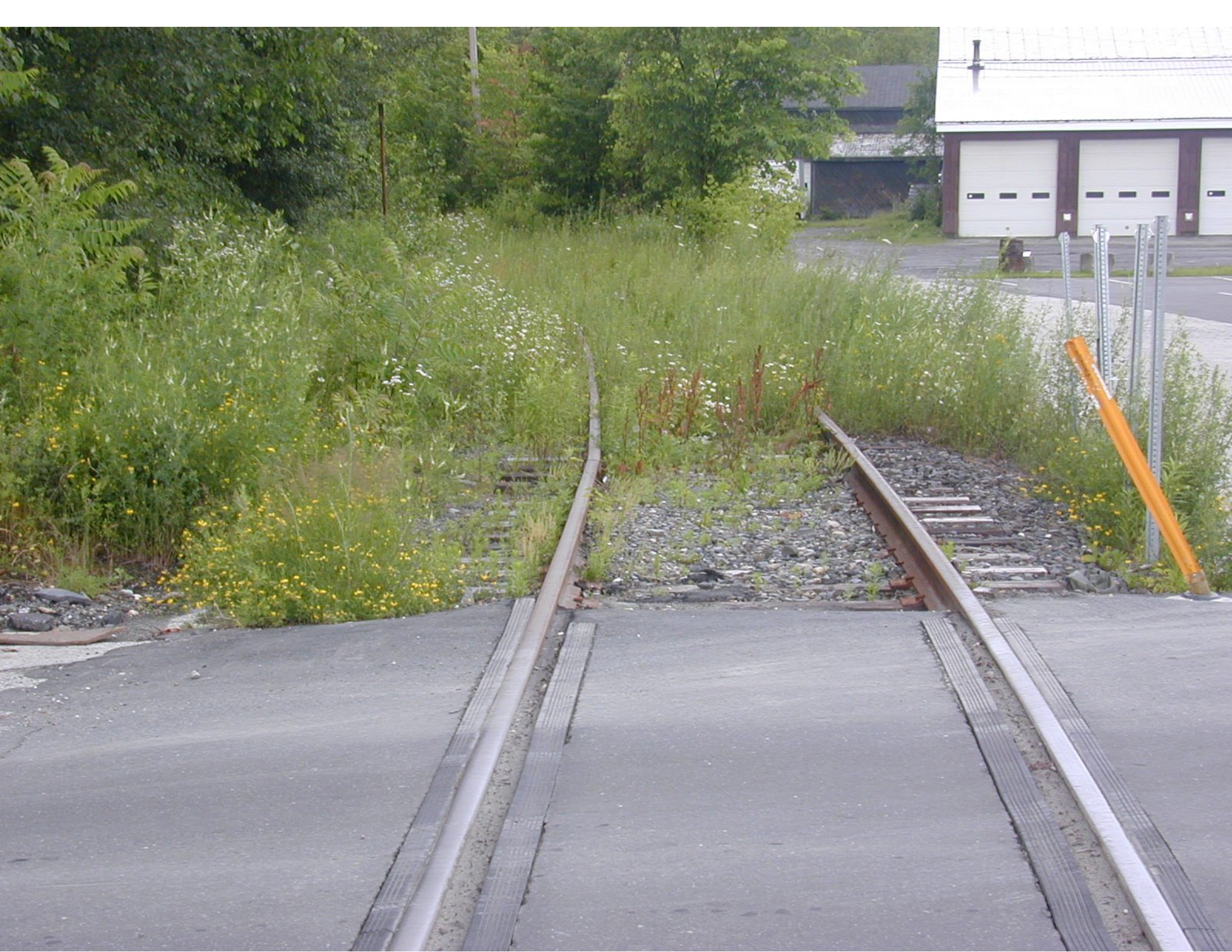
DO NOT  
BLOCK  
TRACKS  
OR  
DRIVE  
ENTRANCE

**WARNING**  
ACTIVE RAILROAD  
EXPECT INCREASED  
RAIL TRAFFIC  
EFFECTIVE JUNE 1, 2010

STOP  
HERE ON  
RED  
DO NOT  
BLOCK  
DRIVE









PUMPER ST



RAILROAD CROSSING  
SPEED ZONE AHEAD

DO NOT BLOCK TRACKS

**WARNING**  
ACTIVE RAILROAD  
TRAFFIC INCREASED  
SEE TRAFFIC  
EFFECTIVE JUNE 1, 2008



327 W  
337 W

