



DSCN3714

Looking South to North



DSCN3715

Looking South to East

PB PARSONS BRINCKERHOFF
 QUADE and DOUGLAS, Inc.
 199, 75 Arlington St., Boston, MA

Power Service Meter No.: _____
 Type Roadway Material: _____
 Railweight in Crossing: _____
 Roundel Size: _____

Drawing Title				
NEW ENGLAND CENTRAL RAILROAD				
NORTH ST.				
Railroad Crossing	City/Town	U.S. DOT. NO.	County	
MP: 108.5	ESSEX JCT.	247728H		
By:	Check By:	Drawn By:	Scale:	Date:
AE	RFO	AE	NTS	09-15-01

NC-154



DSCN3716

Looking South to West



DSCN3717

Looking North to South

PARSONS BRINCKERHOFF
QUADE and DOUGLAS, Inc.
 100, 75 Arlington St., Boston, MA

Drawing Title
NEW ENGLAND CENTRAL RAILROAD
 NORTH ST.



Power Service Meter No.: _____
 Type Roadway Material: _____
 Railweight in Crossing: _____
 Roundel Size: _____

Railroad Crossing		City/Town	U.S. DOT. NO.	County
MP: 108.5		ESSEX JCT.	247728H	
By:	Check By:	Drawn By:	Scale:	Date:
AE	RFO	AE	NTS	09-15-01

NC-154



DSCN3718

Looking North to West



DSCN3719

Looking North to East

PB PARSONS BRINCKERHOFF
 QUADE and DOUGLAS, Inc.
 100, 75 Arlington St., Boston, MA

Power Service Meter No.: _____
 Type Roadway Material: _____
 Railweight in Crossing: _____
 Roundel Size: _____

Drawing Title
NEW ENGLAND CENTRAL RAILROAD
 NORTH ST.

Railroad Crossing	City/Town	U.S. DOT. NO.	County
MP: 108.5	ESSEX JCT.	247728H	
By: AE	Check By: RFO	Drawn By: AE	Scale: NTS
			Date: 09-15-01



NC-154



DSCN3720

Looking West to East



DSCN3721

Looking West to South

PB PARSONS BRINCKERHOFF
 QUADE and DOUGLAS, Inc.
 122, 75 Arlington St., Boston, MA

Power Service Meter No.: _____
 Type Roadway Material: _____
 Railweight in Crossing: _____
 Roundel Size: _____

Drawing Title
NEW ENGLAND CENTRAL RAILROAD
 NORTH ST.

Railroad Crossing	City/Town	U.S. DOT. NO.	County
MP: 108.5	ESSEX JCT.	247728H	
By: AE	Check By: RFO	Drawn By: AE	Scale: NTS
			Date: 09-15-01



NC-154



DSCN3722

Looking West to North



DSCN3723

Looking East to West

PB PARSONS BRINCKERHOFF
 QUADE and DOUGLAS, Inc.
 128, 75 Arlington St., Boston, MA

Power Service Meter No.: _____
 Type Roadway Material: _____
 Railweight in Crossing: _____
 Roundel Size: _____

Drawing Title
NEW ENGLAND CENTRAL RAILROAD
 NORTH ST.



Railroad Crossing		City/Town	U.S. DOT. NO.	County
MP: 108.5		ESSEX JCT.	247728H	
By:	Check By:	Drawn By:	Scale:	Date:
AE	RFO	AE	NTS	09-15-01

NC-154



DSCN3724

Looking East to North



DSCN3725

Looking East to South

PB PARSONS BRINCKERHOFF
 QUADE and DOUGLAS, Inc.
 122. 75 Arlington St., Boston, MA

Drawing Title				
NEW ENGLAND CENTRAL RAILROAD				
NORTH ST.				
Railroad Crossing	City/Town	U.S. DOT. NO.	County	
MP: 108.5	ESSEX JCT.	247728H		
By:	Check By:	Drawn By:	Scale:	Date:
AE	RFO	AE	NTS	09-15-01



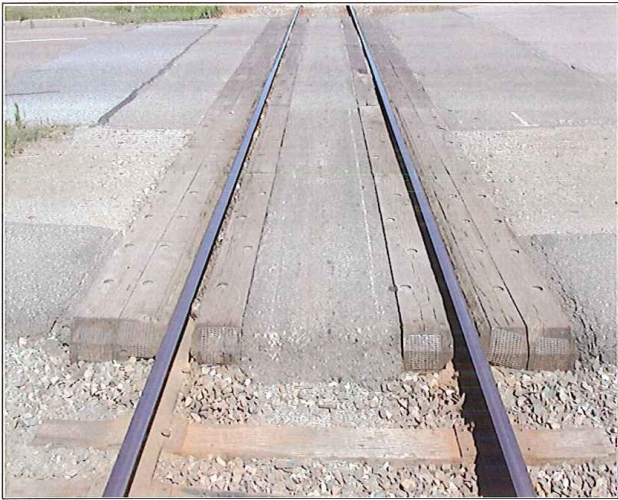
NC-154

Power Service Meter No.: _____
 Type Roadway Material: _____
 Railweight in Crossing: _____
 Roundel Size: _____



DSCN3726

Looking South to North



DSCN3727

Looking South to North

PB PARSONS BRINCKERHOFF
 QUADE and DOUGLAS, Inc.
 75 Arlington St., Boston, MA

Power Service Meter No.: _____
 Type Roadway Material: _____
 Railweight in Crossing: _____
 Roundel Size: _____

Drawing Title				
NEW ENGLAND CENTRAL RAILROAD				
NORTH ST.				
Railroad Crossing	City/Town	U.S. DOT. NO.	County	
MP: 108.5	ESSEX JCT.	247728H		
By:	Check By:	Drawn By:	Scale:	Date:
AE	RFO	AE	NTS	09-15-01



NC-154



DSCN3728

Looking North to South



DSCN3729

Looking North to South

PB PARSONS BRINCKERHOFF
 QUADE and DOUGLAS, Inc.
 128, 75 Arlington St., Boston, MA

Drawing Title
NEW ENGLAND CENTRAL RAILROAD
NORTH ST.



Power Service Meter No.: _____
 Type Roadway Material: _____
 Railweight in Crossing: _____
 Roundel Size: _____



Railroad Crossing	City/Town	U.S. DOT. NO.	County
MP: 108.5	ESSEX JCT.	247728H	
By: AE	Check By: RFO	Drawn By: AE	Scale: NTS
			Date: 09-15-01

NC-154



DSCN3730

Southwest Quadrant

 PARSONS BRINCKERHOFF QUADE and DOUGLAS, Inc. 129, 75 Arlington St., Boston, MA	Drawing Title NEW ENGLAND CENTRAL RAILROAD NORTH ST.					
	Railroad Crossing MP: 108.51		City/Town ESSEX JCT.	U.S. DOT. NO. 247728H		County
	By: AE	Check By: RFO	Drawn By: AE	Scale: NTS		Date: 09-15-01
Power Service Meter No.: _____ Type Roadway Material: _____ Railweight in Crossing: _____ Roundel Size: _____					NC-154	