



DSCN3697

Looking South to North



DSCN3698

Looking South to East

**PB** PARSONS BRINCKERHOFF  
 QUADE and DOUGLAS, Inc.  
 100, 75 Arlington St., Boston, MA

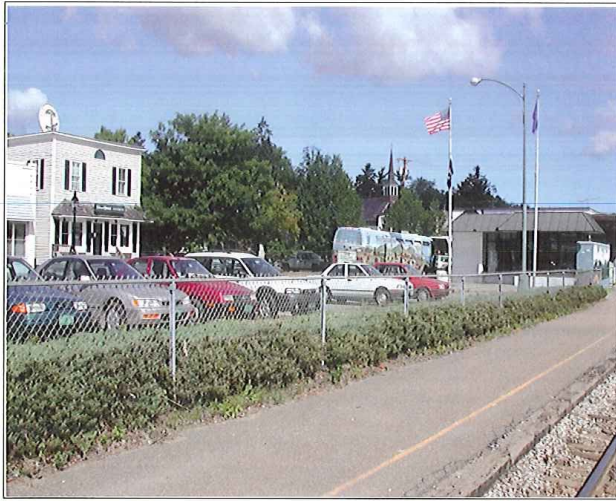
Power Service Meter No.: \_\_\_\_\_  
 Type Roadway Material: \_\_\_\_\_  
 Railweight In Crossing: \_\_\_\_\_  
 Roundel Size: \_\_\_\_\_

Drawing Title  
**NEW ENGLAND CENTRAL RAILROAD**  
 CENTRAL ST.

Railroad Crossing	City/Town	U.S. DOT. NO.	County
MP: 108.3	ESSEX JCT.	247707P	
By: AE	Check By: RFO	Drawn By: AE	Scale: NTS
			Date: 09-15-01



**NC-153**



DSCN3699

Looking South to West



DSCN3700

Looking North to South

**PB** PARSONS BRINCKERHOFF  
 QUADE and DOUGLAS, Inc.  
 75 Arlington St., Boston, MA

Power Service Meter No.: \_\_\_\_\_  
 Type Roadway Material: \_\_\_\_\_  
 Railweight in Crossing: \_\_\_\_\_  
 Roundel Size: \_\_\_\_\_

Drawing Title				
<b>NEW ENGLAND CENTRAL RAILROAD</b>				
CENTRAL ST.				
Railroad Crossing	City/Town	U.S. DOT. NO.	County	
MP: 108.3	ESSEX JCT.	247707P		
By:	Check By:	Drawn By:	Scale:	Date:
AE	RFO	AE	NTS	09-15-01



**NC-153**



DSCN3701

Looking North o West



DSCN3702

Looking North to East

**PB** PARSONS BRINCKERHOFF  
 QUADE and DOUGLAS, Inc.  
 122, 75 Arlington St., Boston, MA

Power Service Meter No.: \_\_\_\_\_  
 Type Roadway Material: \_\_\_\_\_  
 Railwiegth in Crossing: \_\_\_\_\_  
 Roundel Size: \_\_\_\_\_

Drawing Title				
<b>NEW ENGLAND CENTRAL RAILROAD</b>				
CENTRAL ST.				
Railroad Crossing	City/Town	U.S. DOT. NO.	County	
MP: 108.3	ESSEX JCT.	247707P		
By: AE	Check By: RFO	Drawn By: AE	Scale: NTS	Date: 09-15-01

NC-153



DSCN3703

Looking east to West



DSCN3704

Looking East to North

**PB** PARSONS BRINCKERHOFF  
 QUADE and DOUGLAS, Inc.  
 122. 75 Arlington St., Boston, MA

Power Service Meter No.: \_\_\_\_\_  
 Type Roadway Material: \_\_\_\_\_  
 Railweight in Crossing: \_\_\_\_\_  
 Roundel Size: \_\_\_\_\_

Drawing Title  
**NEW ENGLAND CENTRAL RAILROAD**  
 CENTRAL ST.

Railroad Crossing		City/Town	U.S. DOT. NO.	County
MP: 108.3		ESSEX JCT.	247707P	
By:	Check By:	Drawn By:	Scale:	Date:
AE	RFO	AE	NTS	09-15-01



**NC-153**



DSCN3705

Looking East to South



DSCN3706

Looking West to East

**PB** PARSONS BRINCKERHOFF  
 QUADE and DOUGLAS, Inc.  
 199, 75 Arlington St., Boston, MA

Power Service Meter No.: \_\_\_\_\_  
 Type Roadway Material: \_\_\_\_\_  
 Railweight in Crossing: \_\_\_\_\_  
 Roundel Size: \_\_\_\_\_

Drawing Title  
**NEW ENGLAND CENTRAL RAILROAD**  
 CENTRAL ST.

Railroad Crossing		City/Town	U.S. DOT. NO.	County
MP: 108.3		ESSEX JCT.	247707P	
By:	Check By:	Drawn By:	Scale:	Date:
AE	RFO	AE	NTS	09-15-01



**NC-153**



DSCN3707

Looking West to South



DSCN3708

Looking West to North

**PB** PARSONS BRINCKERHOFF  
 QUADE and DOUGLAS, Inc.  
 129. 75 Arlington St., Boston, MA

Power Service Meter No.: \_\_\_\_\_  
 Type Roadway Material: \_\_\_\_\_  
 Railweight In Crossing: \_\_\_\_\_  
 Roundel Size: \_\_\_\_\_

Drawing Title  
**NEW ENGLAND CENTRAL RAILROAD**  
 CENTRAL ST.

Railroad Crossing	City/Town	U.S. DOT. NO.	County
MP: 108.3	ESSEX JCT.	247707P	
By: AE	Check By: RFO	Drawn By: AE	Scale: NTS
			Date: 09-15-01



**NC-153**



DSCN3709

Looking South to North



DSCN3710

Looking South to North

**PB** PARSONS BRINCKERHOFF  
 QUADE and DOUGLAS, Inc.  
 100, 75 Arlington St., Boston, MA

Drawing Title  
**NEW ENGLAND CENTRAL RAILROAD**  
 CENTRAL ST.



Power Service Meter No.: \_\_\_\_\_  
 Type Roadway Material: \_\_\_\_\_  
 Railweight In Crossing: \_\_\_\_\_  
 Roundel Size: \_\_\_\_\_

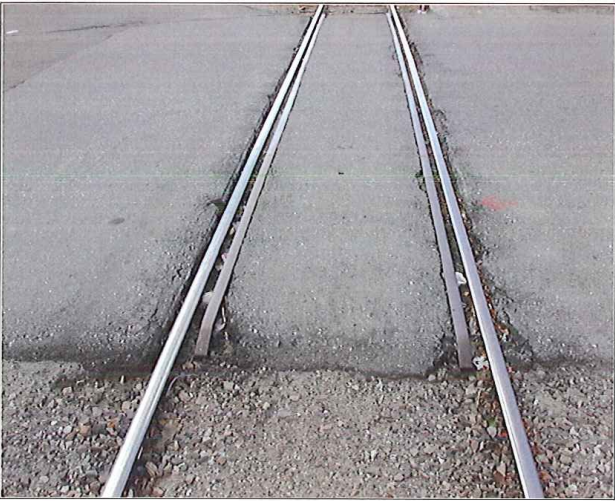
Railroad Crossing		City/Town	U.S. DOT. NO.	County
MP: 108.3		ESSEX JCT.	247707P	
By:	Check By:	Drawn By:	Scale:	Date:
AE	RFO	AE	NTS	09-15-01

**NC-153**



DSCN3711

Looking North to South



DSCN3712

Looking North to South

**PB** PARSONS BRINCKERHOFF  
 QUADE and DOUGLAS, Inc.  
 199 75 Arlington St., Boston, MA

Power Service Meter No.: \_\_\_\_\_  
 Type Roadway Material: \_\_\_\_\_  
 Railweight in Crossing: \_\_\_\_\_  
 Roundel Size: \_\_\_\_\_

Drawing Title				
<b>NEW ENGLAND CENTRAL RAILROAD</b>				
CENTRAL ST.				
Railroad Crossing	City/Town	U.S. DOT. NO.	County	
MP: 108.3	ESSEX JCT.	247707P		
By: AE	Check By: RFO	Drawn By: AE	Scale: NTS	Date: 09-15-01





**NC-153**



DSCN3713

Southeast Quadrant

 <b>PARSONS BRINCKERHOFF</b> QUADE and DOUGLAS, Inc. 100, 75 Arlington St., Boston, MA	Drawing Title <b>NEW ENGLAND CENTRAL RAILROAD</b> CENTRAL ST.				
	Railroad Crossing MP: 108.3	City/Town ESSEX JCT.	U.S. DOT. NO. 247707P	County	
Power Service Meter No.: _____ Type Roadway Material: _____ Railweight in Crossing: _____ Roundel Size: _____	By: AE	Check By: RFO	Drawn By: AE	Scale: NTS	Date: 09-15-01
					<b>NC-153</b>