



DSCN3624

Looking South to North



DSCN3625

Looking South to West

PARSONS BRINCKERHOFF
QUADE and DOUGLAS, Inc.
 189. 75 Arlington St., Boston, MA

Drawing Title
NEW ENGLAND CENTRAL RAILROAD
 THI



Power Service Meter No.: _____
 Type Roadway Material: _____
 Railweight in Crossing: _____
 Roundel Size: _____

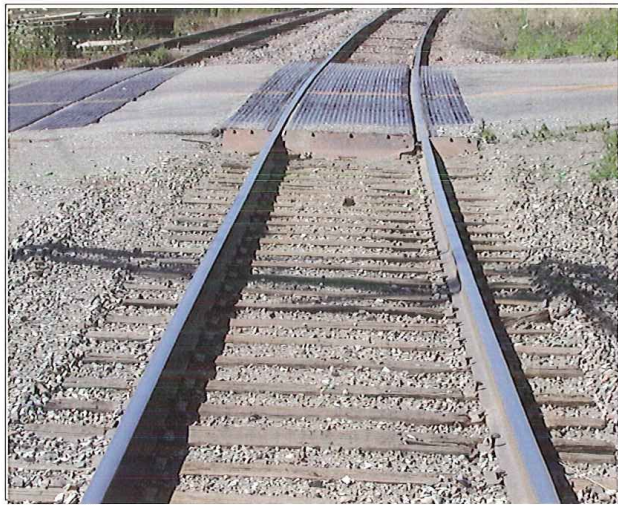
Railroad Crossing		City/Town	U.S. DOT. NO.	County
MP: 99.06		RICHMOND	247685S	
By:	Check By:	Drawn By:	Scale:	Date:
AE	RFO	AE	NTS	09-15-01

NC-149



DSCN3626

Looking South to East



DSCN3627

Looking South to North, Mainline

PB PARSONS BRINCKERHOFF
 QUADE and DOUGLAS, Inc.
 188, 75 Arlington St., Boston, MA

Drawing Title
NEW ENGLAND CENTRAL RAILROAD
 THI



Power Service Meter No.: _____
 Type Roadway Material: _____
 Railweight in Crossing: _____
 Roundel Size: _____

Railroad Crossing MP: 99.06		City/Town RICHMOND	U.S. DOT. NO. 247685S	County
By: AE	Check By: RFO	Drawn By: AE	Scale: NTS	Date: 09-15-01

NC-149



DSCN3628

Looking South to North, Mainline



DSCN3629

Looking South to West, Sidetrack

PB PARSONS BRINCKERHOFF
 QUADE and DOUGLAS, Inc.
 122, 75 Arlington St., Boston, MA

Drawing Title
NEW ENGLAND CENTRAL RAILROAD
 THI



Power Service Meter No.: _____
 Type Roadway Material: _____
 Railweight in Crossing: _____
 Roundel Size: _____

Railroad Crossing		City/Town	U.S. DOT. NO.	County
MP: 99.06	RICHMOND		247685S	
By: AE	Check By: RFO	Drawn By: AE	Scale: NTS	Date: 09-15-01

NC-149



DSCN3630

Rubber Crossing



DSCN3631

Plow Damage

PB PARSONS BRINCKERHOFF
 QUADE and DOUGLAS, Inc.
 122, 75 Arlington St., Boston, MA

Power Service Meter No.: _____
 Type Roadway Material: _____
 Railweight in Crossing: _____
 Roundel Size: _____

Drawing Title
NEW ENGLAND CENTRAL RAILROAD
 THI



Railroad Crossing		City/Town	U.S. DOT. NO.	County
MP:	99.06	RICHMOND	247685S	
By:	Check By:	Drawn By:	Scale:	Date:
AE	RFO	AE	NTS	09-15-01

NC-149



DSCN3632

Surface Damage



DSCN3633

Northeast Quadrant

PB PARSONS BRINCKERHOFF
 QUADE and DOUGLAS, Inc.
 128, 75 Arlington St., Boston, MA

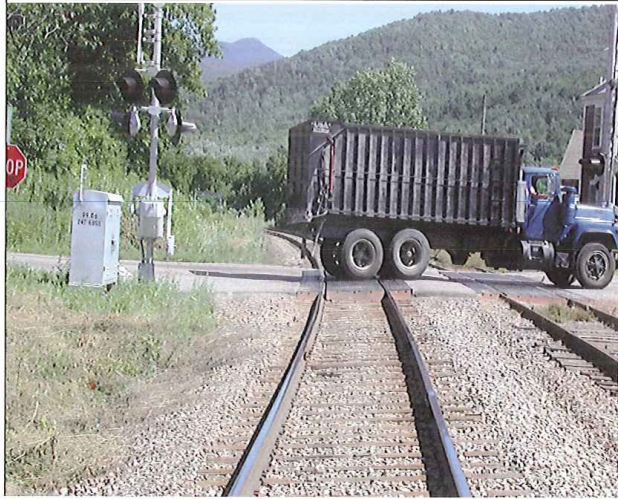
Drawing Title
NEW ENGLAND CENTRAL RAILROAD
 THI



Power Service Meter No.: _____
 Type Roadway Material: _____
 Railweight in Crossing: _____
 Roundel Size: _____

Railroad Crossing		City/Town	U.S. DOT. NO.	County
MP: 99.06		RICHMOND	247685S	
By:	Check By:	Drawn By:	Scale:	Date:
AE	RFO	AE	NTS	09-15-01

NC-149



DSCN3634

Looking North to South



DSCN3635

Looking North to West

PB PARSONS BRINCKERHOFF
 QUADE and DOUGLAS, Inc.
 122, 75 Arlington St., Boston, MA

Power Service Meter No.: _____
 Type Roadway Material: _____
 Railweight in Crossing: _____
 Roundel Size: _____

Drawing Title
NEW ENGLAND CENTRAL RAILROAD
 THI

Railroad Crossing	City/Town	U.S. DOT. NO.	County
MP: 99.06	RICHMOND	247685S	

By:	Check By:	Drawn By:	Scale:	Date:
AE	RFO	AE	NTS	09-15-01



NC-149



DSCN3636

Looking North to East



DSCN3637

Looking West to East

PB PARSONS BRINCKERHOFF
 QUADE and DOUGLAS, Inc.
 100 75 Arlington St., Boston, MA

Drawing Title
NEW ENGLAND CENTRAL RAILROAD
 THI



Power Service Meter No.: _____
 Type Roadway Material: _____
 Railweight in Crossing: _____
 Roundel Size: _____

Railroad Crossing		City/Town	U.S. DOT. NO.	County
MP: 99.06		RICHMOND	247685S	
By:	Check By:	Drawn By:	Scale:	Date:
AE	RFO	AE	NTS	09-15-01

NC-149



DSCN3638

Looking West to East



DSCN3640

Looking West to North

PB PARSONS BRINCKERHOFF
 QUADE and DOUGLAS, Inc.
 122. 75 Arlington St., Boston, MA

Drawing Title
NEW ENGLAND CENTRAL RAILROAD
 THI



Power Service Meter No.: _____
 Type Roadway Material: _____
 Railweight in Crossing: _____
 Roundel Size: _____

Railroad Crossing		City/Town	U.S. DOT. NO.	County
MP: 99.06		RICHMOND	247685S	
By:	Check By:	Drawn By:	Scale:	Date:
AE	RFO	AE	NTS	09-15-01

NC-149



DSCN3641

Looking West to East



DSCN3642

Looking East to west

PB PARSONS BRINCKERHOFF
 QUADE and DOUGLAS, Inc.
 199, 75 Arlington St., Boston, MA

Drawing Title
NEW ENGLAND CENTRAL RAILROAD
 THI



Power Service Meter No.: _____
 Type Roadway Material: _____
 Rail/wright in Crossing: _____
 Roundel Size: _____

Railroad Crossing		City/Town	U.S. DOT. NO.	County
MP:	99.06	RICHMOND	247685S	
By:	Check By:	Drawn By:	Scale:	Date:
AE	RFO	AE	NTS	09-15-01

NC-149





DSCN3643

Looking East to South



DSCN3644

Looking East to North

 PARSONS BRINCKERHOFF QUADE and DOUGLAS, Inc. 100, 75 Arlington St., Boston, MA	Drawing Title NEW ENGLAND CENTRAL RAILROAD THI				
	Power Service Meter No.: _____ Type Roadway Material: _____ Railweight in Crossing: _____ Roundel Size: _____	Railroad Crossing MP: 99.06	City/Town RICHMOND	U.S. DOT. NO. 247685S	
By: AE	Check By: RFO	Drawn By: AE	Scale: NTS	Date: 09-15-01	