



DSCN3111

Looking South to North



DSCN3112

Looking South to East

PB PARSONS BRINCKERHOFF
 QUADE and DOUGLAS, Inc.
 188. 75 Arlington St., Boston, MA

Drawing Title
NEW ENGLAND CENTRAL RAILROAD
 SCHOOL ST.



Power Service Meter No.: _____
 Type Roadway Material: _____
 Railweight In Crossing: _____
 Roundel Size: _____

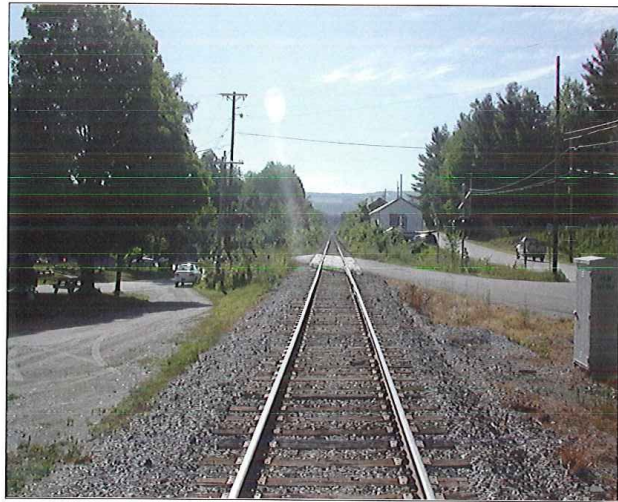
Railroad Crossing		City/Town	U.S. DOT. NO.	County
MP: 46.95		RANDOLPH	247581K	
By:	Check By:	Drawn By:	Scale:	Date:
AE	RFO	AE	NTS	09-15-01

NC-118



DSCN3113

Looking South to West



DSCN3114

Looking North to South

PB PARSONS BRINCKERHOFF
 QUADE and DOUGLAS, Inc.
 199, 75 Arlington St., Boston, MA

Drawing Title
NEW ENGLAND CENTRAL RAILROAD
 SCHOOL ST.



Power Service Meter No.: _____
 Type Roadway Material: _____
 Railweight in Crossing: _____
 Roundel Size: _____

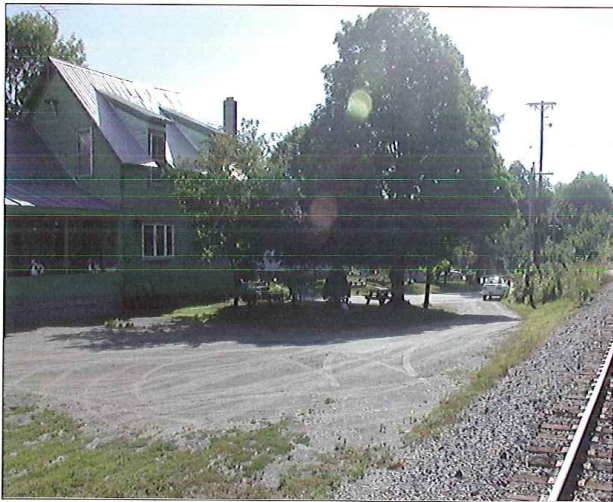
Railroad Crossing		City/Town	U.S. DOT. NO.	County
MP: 46.95		RANDOLPH	247581K	
By:	Check By:	Drawn By:	Scale:	Date:
AE	RFO	AE	NTS	09-15-01

NC-118



DSCN3115

Looking North to West



DSCN3116

Looking North to East

PARSONS BRINCKERHOFF
QUADE and DOUGLAS, Inc.
 199. 75 Arlington St., Boston, MA

Drawing Title
NEW ENGLAND CENTRAL RAILROAD
 SCHOOL ST.



Power Service Meter No.: _____
 Type Roadway Material: _____
 Railweight in Crossing: _____
 Roundel Size: _____

Railroad Crossing		City/Town	U.S. DOT. NO.	County
MP: 46.95		RANDOLPH	247581K	
By:	Check By:	Drawn By:	Scale:	Date:
AE	RFO	AE	NTS	09-15-01

NC-118



DSCN3117

Looking East to West



DSCN3118

Looking East to North

PB PARSONS BRINCKERHOFF
 QUADE and DOUGLAS, Inc.
 189. 75 Arlington St., Boston, MA

Drawing Title
NEW ENGLAND CENTRAL RAILROAD
 SCHOOL ST.



Power Service Meter No.: _____
 Type Roadway Material: _____
 Right-of-Way in Crossing: _____
 Roundel Size: _____

Railroad Crossing		City/Town	U.S. DOT. NO.	County
MP: 46.95		RANDOLPH	247581K	
By:	Check By:	Drawn By:	Scale:	Date:
AE	RFO	AE	NTS	09-15-01

NC-118



DSCN3119

Looking East to West



DSCN3120

Looking West to East

PB PARSONS BRINCKERHOFF
 QUADE and DOUGLAS, Inc.
 189. 75 Arlington St., Boston, MA

Drawing Title
NEW ENGLAND CENTRAL RAILROAD
 SCHOOL ST.



Power Service Meter No.: _____
 Type Roadway Material: _____
 Railweight in Crossing: _____
 Roundel Size: _____

Railroad Crossing		City/Town	U.S. DOT. NO.	County
MP: 46.95		RANDOLPH	247581K	
By:	Check By:	Drawn By:	Scale:	Date:
AE	RFO	AE	NTS	09-15-01

NC-118



DSCN3121

Looking West to North



DSCN3122

Looking West to South

PB PARSONS BRINCKERHOFF
 QUADE and DOUGLAS, Inc.
 1228. 75 Arlington St., Boston, MA

Drawing Title
NEW ENGLAND CENTRAL RAILROAD
 SCHOOL ST.



Power Service Meter No.: _____
 Type Roadway Material: _____
 Railweight in Crossing: _____
 Roundel Size: _____

Railroad Crossing		City/Town	U.S. DOT. NO.	County
MP: 46.95		RANDOLPH	247581K	
By:	Check By:	Drawn By:	Scale:	Date:
AE	RFO	AE	NTS	09-15-01

NC-118



DSCN3123

Looking North to South



DSCN3124

Northwest Quadrant

PB PARSONS BRINCKERHOFF
 QUADE and DOUGLAS, Inc.
 120, 75 Arlington St., Boston, MA

Drawing Title
NEW ENGLAND CENTRAL RAILROAD
 SCHOOL ST.



Power Service Meter No.: _____
 Type Roadway Material: _____
 Railwright In Crossing: _____
 Roundel Size: _____

Railroad Crossing		City/Town	U.S. DOT. NO.	County
MP: 46.95		RANDOLPH	247581K	
By:	Check By:	Drawn By:	Scale:	Date:
AE	RFO	AE	NTS	09-15-01

NC-118