



DSCN3089

Looking South to North



DSCN3092

Looking South to West

**PB** PARSONS BRINCKERHOFF  
 QUADE and DOUGLAS, Inc.  
 129, 75 Arlington St., Boston, MA

Power Service Meter No.: \_\_\_\_\_  
 Type Roadway Material: \_\_\_\_\_  
 Railweight In Crossing: \_\_\_\_\_  
 Roundel Size: \_\_\_\_\_

Drawing Title				
<b>NEW ENGLAND CENTRAL RAILROAD</b>				
MAIN ST. (VT. RTE 12)				
Railroad Crossing	City/Town	U.S. DOT. NO.	County	
MP: 46.37	RANDOLPH	247580D		
By: AE	Check By: RFO	Drawn By: AE	Scale: NTS	Date: 09-15-01



**NC-117**



DSCN3093

Looking South to East



DSCN3094

Looking South to North

**PARSONS BRINCKERHOFF**  
**QUADE and DOUGLAS, Inc.**  
 75 Arlington St., Boston, MA

Drawing Title  
**NEW ENGLAND CENTRAL RAILROAD**  
 MAIN ST. (VT. RTE 12)



Power Service Meter No.: \_\_\_\_\_  
 Type Roadway Material: \_\_\_\_\_  
 Railweight In Crossing: \_\_\_\_\_  
 Roundel Size: \_\_\_\_\_

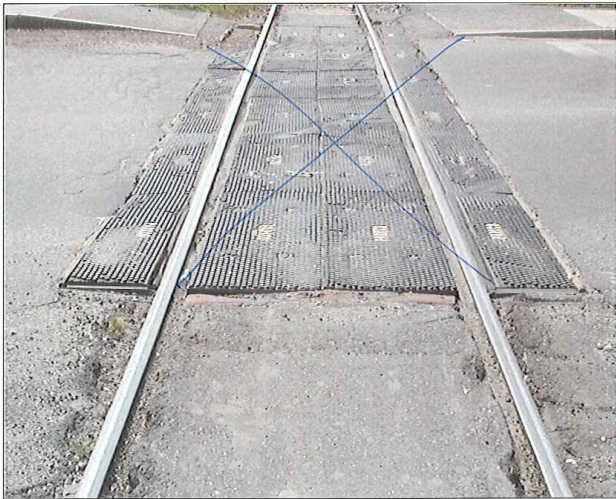
Railroad Crossing	City/Town	U.S. DOT. NO.	County
MP: 46.37	RANDOLPH	247580D	
By: AE	Check By: RFO	Drawn By: AE	Scale: NTS
			Date: 09-15-01

**NC-117**



DSCN3095

Looking South to North



DSCN3096

Looking North to South

**PB** PARSONS BRINCKERHOFF  
 QUADE and DOUGLAS, Inc.  
 75 Arlington St., Boston, MA

Drawing Title  
**NEW ENGLAND CENTRAL RAILROAD**  
 MAIN ST. (VT. RTE 12)



Power Service Meter No.: \_\_\_\_\_  
 Type Roadway Material: \_\_\_\_\_  
 Railweight in Crossing: \_\_\_\_\_  
 Roundel Size: \_\_\_\_\_

Railroad Crossing	City/Town	U.S. DOT. NO.	County
MP: 46.37	RANDOLPH	247580D	
By: AE	Check By: RFO	Drawn By: AE	Scale: NTS
		Date:	09-15-01

**NC-117**



DSCN3097

Damaged Rubber Crossing

Asphalt  
RS



DSCN3098

Looking North to South

**PB** PARSONS BRINCKERHOFF  
 QUADE and DOUGLAS, Inc.  
 75 Arlington St., Boston, MA

Drawing Title  
**NEW ENGLAND CENTRAL RAILROAD**  
 MAIN ST. (VT. RTE 12)



Power Service Meter No.: \_\_\_\_\_  
 Type Roadway Material: \_\_\_\_\_  
 Railweight In Crossing: \_\_\_\_\_  
 Roundel Size: \_\_\_\_\_

Railroad Crossing	City/Town	U.S. DOT. NO.	County
MP: 46.37	RANDOLPH	247580D	
By: AE	Check By: RFO	Drawn By: AE	Scale: NTS
			Date: 09-15-01

**NC-117**



DSCN3099

Looking North to West



DSCN3100

Looking North to East

**PARSONS BRINCKERHOFF**  
**QUADE and DOUGLAS, Inc.**  
 75 Arlington St., Boston, MA

Drawing Title  
**NEW ENGLAND CENTRAL RAILROAD**  
 MAIN ST. (VT. RTE 12)



Power Service Meter No.: \_\_\_\_\_  
 Type Roadway Material: \_\_\_\_\_  
 Railweight in Crossing: \_\_\_\_\_  
 Roundel Size: \_\_\_\_\_

Railroad Crossing	City/Town	U.S. DOT. NO.	County
MP: 46.37	RANDOLPH	247580D	
By: AE	Check By: RFO	Drawn By: AE	Scale: NTS
		Date:	09-15-01

**NC-117**



DSCN3101

Northwest of Crossing



DSCN3102

Northwest of Crossing

**PB** PARSONS BRINCKERHOFF  
 QUADE and DOUGLAS, Inc.  
 120, 75 Arlington St., Boston, MA

Drawing Title  
**NEW ENGLAND CENTRAL RAILROAD**  
 MAIN ST. (VT. RTE 12)



Power Service Meter No.: \_\_\_\_\_  
 Type Roadway Material: \_\_\_\_\_  
 Railweight in Crossing: \_\_\_\_\_  
 Roundel Size: \_\_\_\_\_

Railroad Crossing	City/Town	U.S. DOT. NO.	County
MP: 46.37	RANDOLPH	247580D	
By: AE	Check By: RFO	Drawn By: AE	Scale: NTS
		Date:	09-15-01

**NC-117**



DSCN3103

Looking West to East



DSCN3104

Looking West to South

**PB** PARSONS BRINCKERHOFF  
 QUADE and DOUGLAS, Inc.  
 75 Arlington St., Boston, MA

Drawing Title  
**NEW ENGLAND CENTRAL RAILROAD**  
 MAIN ST. (VT. RTE 12)



Power Service Meter No.: \_\_\_\_\_  
 Type Roadway Material: \_\_\_\_\_  
 Railweight in Crossing: \_\_\_\_\_  
 Roundel Size: \_\_\_\_\_

Railroad Crossing	City/Town	U.S. DOT. NO.	County
MP: 46.37	RANDOLPH	247580D	
By: AE	Check By: RFO	Drawn By: AE	Scale: NTS
		Date:	09-15-01

**NC-117**



DSCN3105

Looking West to North



DSCN3106

Looking East to West

**PB** PARSONS BRINCKERHOFF  
 QUADE and DOUGLAS, Inc.  
 75 Arlington St., Boston, MA

Drawing Title  
**NEW ENGLAND CENTRAL RAILROAD**  
 MAIN ST. (VT. RTE 12)



Power Service Meter No.: \_\_\_\_\_  
 Type Roadway Material: \_\_\_\_\_  
 Railweight in Crossing: \_\_\_\_\_  
 Roundel Size: \_\_\_\_\_

Railroad Crossing	City/Town	U.S. DOT. NO.	County
MP: 46.37	RANDOLPH	247580D	
By: AE	Check By: RFO	Drawn By: AE	Scale: NTS
			Date: 09-15-01

**NC-117**



DSCN3107

Looking east to North



DSCN3108

Looking East to South

**PB** PARSONS BRINCKERHOFF  
 QUADE and DOUGLAS, Inc.  
 129 75 Arlington St., Boston, MA

Drawing Title  
**NEW ENGLAND CENTRAL RAILROAD**  
 MAIN ST. (VT. RTE 12)



Power Service Meter No.: \_\_\_\_\_  
 Type Roadway Material: \_\_\_\_\_  
 Railweight in Crossing: \_\_\_\_\_  
 Roundel Size: \_\_\_\_\_

Railroad Crossing	City/Town	U.S. DOT. NO.	County
MP: 46.37	RANDOLPH	247580D	
By: AE	Check By: RFO	Drawn By: AE	Scale: NTS
		Date:	09-15-01

**NC-117**





DSCN3109

Looking East to West



DSCN3110

Southeast Quadrant

 <b>PARSONS BRINCKERHOFF</b> QUADE and DOUGLAS, Inc. 75 Arlington St., Boston, MA	Drawing Title <b>NEW ENGLAND CENTRAL RAILROAD</b> MAIN ST. (VT. RTE 12)				
	Power Service Meter No.: _____ Type Roadway Material: _____ Railwright in Crossing: _____ Roundel Size: _____	Railroad Crossing MP: 46.37	City/Town RANDOLPH	U.S. DOT. NO. 247580D	
	By: AE	Check By: RFO	Drawn By: AE	Scale: NTS	Date: 09-15-01
	<b>NC-117</b>				