



DSCN3072

Looking South to North



DSCN3073

Looking South to west

PB PARSONS BRINCKERHOFF
 QUADE and DOUGLAS, Inc.
 75 Arlington St., Boston, MA

Drawing Title
NEW ENGLAND CENTRAL RAILROAD
 PLEASANT ST.



Power Service Meter No.: _____
 Type Roadway Material: _____
 Railweight in Crossing: _____
 Roundel Size: _____

Railroad Crossing	City/Town	U.S. DOT. NO.	County
MP: 46.3	RANDOLPH	247579J	
By: AE	Check By: RFO	Drawn By: AE	Scale: NTS
			Date: 09-15-01

NC-116



DSCN3074

Looking South to East



DSCN3076

Looking South to North

PB PARSONS BRINCKERHOFF
 QUADE and DOUGLAS, Inc.
 188. 75 Arlington St., Boston, MA

Drawing Title
NEW ENGLAND CENTRAL RAILROAD
 PLEASANT ST.



Power Service Meter No.: _____
 Type Roadway Material: _____
 Railweight in Crossing: _____
 Roundel Size: _____

Railroad Crossing		City/Town	U.S. DOT. NO.	County
MP: 46.3		RANDOLPH	247579J	
By:	Check By:	Drawn By:	Scale:	Date:
AE	RFO	AE	NTS	09-15-01

NC-116



DSCN3077

Looking South to North



DSCN3078

Looking South to North

PB PARSONS BRINCKERHOFF
 QUADE and DOUGLAS, Inc.
 199. 75 Arlington St., Boston, MA

Drawing Title
NEW ENGLAND CENTRAL RAILROAD
 PLEASANT ST.



Power Service Meter No.: _____
 Type Roadway Material: _____
 Railweight in Crossing: _____
 Roundel Size: _____

Railroad Crossing		City/Town	U.S. DOT. NO.	County
MP: 46.3		RANDOLPH	247579J	
By: AE	Check By: RFO	Drawn By: AE	Scale: NTS	Date: 09-15-01

NC-116



DSCN3079

Looking North to South



DSCN3080

Looking North to East

PB PARSONS BRINCKERHOFF
 QUADE and DOUGLAS, Inc.
 188. 75 Arlington St., Boston, MA

Drawing Title
NEW ENGLAND CENTRAL RAILROAD
PLEASANT ST.



Power Service Meter No.: _____
 Type Roadway Material: _____
 Railweight in Crossing: _____
 Roundel Size: _____

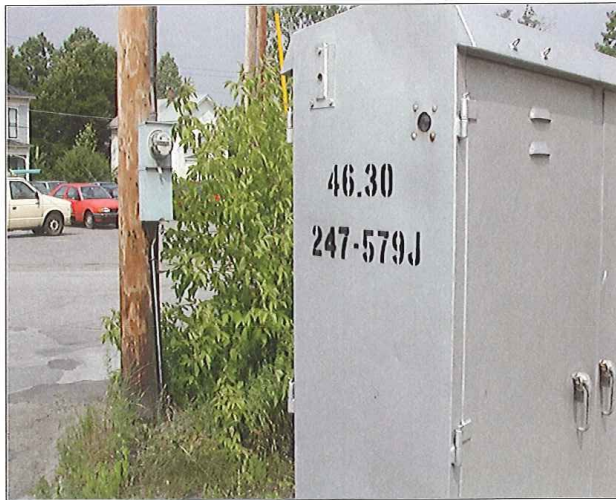
Railroad Crossing		City/Town	U.S. DOT. NO.	County
MP: 46.3		RANDOLPH	247579J	
By: AE	Check By: RFO	Drawn By: AE	Scale: NTS	Date: 09-15-01

NC-116



DSCN3081

Looking North to west



DSCN3082

Northeast Quadrant

PB PARSONS BRINCKERHOFF
 QUADE and DOUGLAS, Inc.
 1299 75 Arlington St., Boston, MA

Drawing Title
NEW ENGLAND CENTRAL RAILROAD
 PLEASANT ST.



Power Service Meter No.: _____
 Type Roadway Material: _____
 Railweight in Crossing: _____
 Roundal Size: _____

Railroad Crossing	City/Town	U.S. DOT. NO.	County
MP: 46.3	RANDOLPH	247579J	
By: AE	Check By: RFO	Drawn By: AE	Scale: NTS
		Date:	09-15-01

NC-116



DSCN3083

Looking East to west



DSCN3084

Looking East to South

PB PARSONS BRINCKERHOFF
 QUADE and DOUGLAS, Inc.
 129. 75 Arlington St., Boston, MA

Drawing Title
NEW ENGLAND CENTRAL RAILROAD
 PLEASANT ST.



Power Service Meter No.: _____
 Type Roadway Material: _____
 Railweight in Crossing: _____
 Roundel Size: _____

Railroad Crossing		City/Town	U.S. DOT. NO.	County
MP: 46.3		RANDOLPH	247579J	
By:	Check By:	Drawn By:	Scale:	Date:
AE	RFO	AE	NTS	09-15-01

NC-116



DSCN3085

Looking East to North



DSCN3086

Looking West to East

PB PARSONS BRINCKERHOFF
 QUADE and DOUGLAS, Inc.
 189. 75 Arlington St., Boston, MA

Drawing Title
NEW ENGLAND CENTRAL RAILROAD
 PLEASANT ST.



Power Service Meter No.: _____
 Type Roadway Material: _____
 Railweight in Crossing: _____
 Roundel Size: _____

Railroad Crossing		City/Town	U.S. DOT. NO.	County
MP: 46.3		RANDOLPH	247579J	
By:	Check By:	Drawn By:	Scale:	Date:
AE	RFO	AE	NTS	09-15-01

NC-116



DSCN3087

Looking West to North



DSCN3088

Looking West to South

PB PARSONS BRINCKERHOFF
 QUADE and DOUGLAS, Inc.
 1998, 75 Arlington St., Boston, MA

Drawing Title
NEW ENGLAND CENTRAL RAILROAD
PLEASANT ST.



Power Service Meter No.: _____
 Type Roadway Material: _____
 Railweight in Crossing: _____
 Roundel Size: _____

Railroad Crossing	City/Town	U.S. DOT. NO.	County
MP: 46.3	RANDOLPH	247579J	
By: AE	Check By: RFO	Drawn By: AE	Scale: NTS
			Date: 09-15-01

NC-116