



DSCN3457

Looking South to North



DSCN3458

Looking South to West

PB PARSONS BRINCKERHOFF
 QUADE and DOUGLAS, Inc.
 75 Arlington St., Boston, MA

Drawing Title NEW ENGLAND CENTRAL RAILROAD				
LORD RD				
Railroad Crossing	City/Town	U.S. DOT. NO.	County	
MP: 75.05	BERLIN	247528Y		
By: AE	Check By: RFO	Drawn By: AE	Scale: NTS	Date: 09-15-01

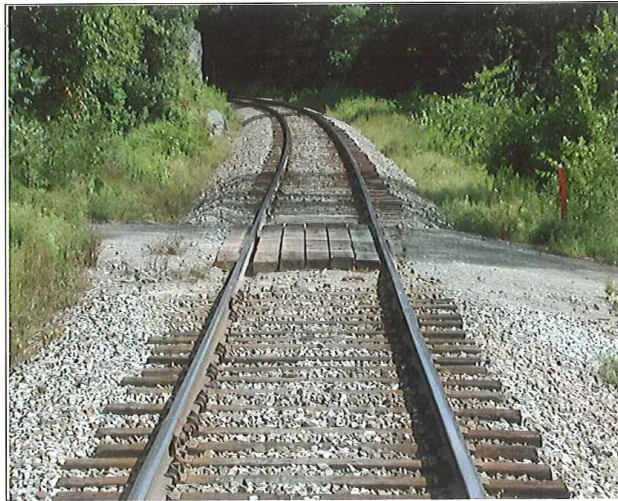
NC-140

Power Service Meter No.: _____
 Type Roadway Material: _____
 Railweight in Crossing: _____
 Roundel Size: _____



DSCN3459

Looking South to East



DSCN3460

Looking South to West

PARSONS BRINCKERHOFF
QUADE and DOUGLAS, Inc.
 129 75 Arlington St., Boston, MA

Drawing Title
NEW ENGLAND CENTRAL RAILROAD
LORD RD



Power Service Meter No.: _____
 Type Roadway Material: _____
 Railweight in Crossing: _____
 Roundel Size: _____

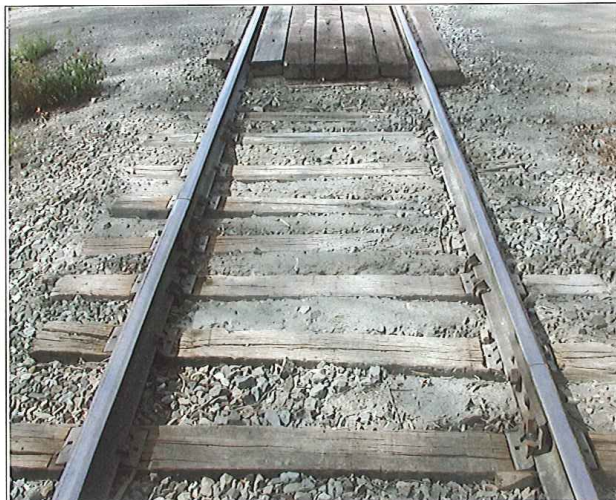
Railroad Crossing	City/Town	U.S. DOT. NO.	County
MP: 75.05	BERLIN	247528Y	
By: AE	Check By: RFO	Drawn By: AE	Scale: NTS
			Date: 09-15-01

NC-140



DSCN3461

Looking South to East



DSCN3462

Looking North to South

PB PARSONS BRINCKERHOFF
 QUADE and DOUGLAS, Inc.
 189. 75 Arlington St., Boston, MA

Drawing Title
NEW ENGLAND CENTRAL RAILROAD
 LORD RD



Power Service Meter No.: _____
 Type Roadway Material: _____
 Railweight in Crossing: _____
 Roundel Size: _____

Railroad Crossing		City/Town	U.S. DOT. NO.	County
MP: 75.05		BERLIN	247528Y	
By:	Check By:	Drawn By:	Scale:	Date:
AE	RFO	AE	NTS	09-15-01

NC-140



DSCN3463

Looking North to South



DSCN3464

Looking North to East

PB PARSONS BRINCKERHOFF
 QUADE and DOUGLAS, Inc.
 188. 75 Arlington St., Boston, MA

Drawing Title
NEW ENGLAND CENTRAL RAILROAD
 LORD RD



Power Service Meter No.: _____
 Type Roadway Material: _____
 Railweight in Crossing: _____
 Roundel Size: _____

Railroad Crossing		City/Town	U.S. DOT. NO.	County
MP:	75.05	BERLIN	247528Y	
By:	Check By:	Drawn By:	Scale:	Date:
AE	RFO	AE	NTS	09-15-01

NC-140



DSCN3465

Looking North to West



DSCN3466

Looking East to west

PB PARSONS BRINCKERHOFF
 QUADE and DOUGLAS, Inc.
 199. 75 Arlington St., Boston, MA

Drawing Title
NEW ENGLAND CENTRAL RAILROAD
 LORD RD



Power Service Meter No.: _____
 Type Roadway Material: _____
 Railweight in Crossing: _____
 Roundel Size: _____

Railroad Crossing		City/Town	U.S. DOT. NO.	County
MP: 75.05		BERLIN	247528Y	
By:	Check By:	Drawn By:	Scale:	Date:
AE	RFO	AE	NTS	09-15-01

NC-140



DSCN3467

Southwest Quadrant



DSCN3468

Looking West to East

PB PARSONS BRINCKERHOFF
 QUADE and DOUGLAS, Inc.
 128. 75 Arlington St., Boston, MA

Drawing Title
NEW ENGLAND CENTRAL RAILROAD
 LORD RD



Power Service Meter No.: _____
 Type Roadway Material: _____
 Railweight in Crossing: _____
 Roundel Size: _____

Railroad Crossing		City/Town	U.S. DOT. NO.	County
MP:	75.05	BERLIN	247528Y	
By:	Check By:	Drawn By:	Scale:	Date:
AE	RFO	AE	NTS	09-15-01

NC-140



DSCN3469

Looking West to South



DSCN3470

Looking west to North

PB PARSONS BRINCKERHOFF
 QUADE and DOUGLAS, Inc.
 189. 75 Arlington St., Boston, MA

Drawing Title
NEW ENGLAND CENTRAL RAILROAD
 LORD RD



Power Service Meter No.: _____
 Type Roadway Material: _____
 Railweight in Crossing: _____
 Roundel Size: _____

Railroad Crossing		City/Town	U.S. DOT. NO.	County
MP: 75.05		BERLIN	247528Y	
By:	Check By:	Drawn By:	Scale:	Date:
AE	RFO	AE	NTS	09-15-01

NC-140



DSCN3471

Looking East to west



DSCN3472

Looking East to South

PB PARSONS BRINCKERHOFF
 QUADE and DOUGLAS, Inc.
 75 Arlington St., Boston, MA

Drawing Title				
NEW ENGLAND CENTRAL RAILROAD				
LORD RD				
Railroad Crossing	City/Town	U.S. DOT. NO.	County	
MP: 75.05	BERLIN	247528Y		
By:	Check By:	Drawn By:	Scale:	Date:
AE	RFO	AE	NTS	09-15-01



NC-140

Power Service Meter No.: _____
 Type Roadway Material: _____
 Railwright in Crossing: _____
 Roundel Size: _____



DSCN3473

Looking East to North

 PARSONS BRINCKERHOFF QUADE and DOUGLAS, Inc. <small>1299</small> 75 Arlington St., Boston, MA	Drawing Title NEW ENGLAND CENTRAL RAILROAD LORD RD				
	Railroad Crossing MP: 75.05	City/Town BERLIN	U.S. DOT. NO. 247528Y	County	
Power Service Meter No.: _____ Type Roadway Material: _____ Railweight in Crossing: _____ Roundel Size: _____	By: AE	Check By: RFO	Drawn By: AE	Scale: NTS	Date: 09-15-01