



DSCN3379

Looking South to North



DSCN3380

Looking South to West

PARSONS BRINCKERHOFF
QUADE and DOUGLAS, Inc.
 129. 75 Arlington St., Boston, MA

Drawing Title
NEW ENGLAND CENTRAL RAILROAD
 COX BROOK RD



Power Service Meter No.: _____
 Type Roadway Material: _____
 Railweight in Crossing: _____
 Roundel Size: _____

Railroad Crossing		City/Town	U.S. DOT. NO.	County
MP: 69.45		NORTHFIELD	247516E	
By:	Check By:	Drawn By:	Scale:	Date:
AE	RFO	AE	NTS	09-15-01

NC-135



DSCN3381

Looking South to East



DSCN3382

Looking South to North

PARSONS BRINCKERHOFF
 QUADE and DOUGLAS, Inc.
 75 Arlington St., Boston, MA

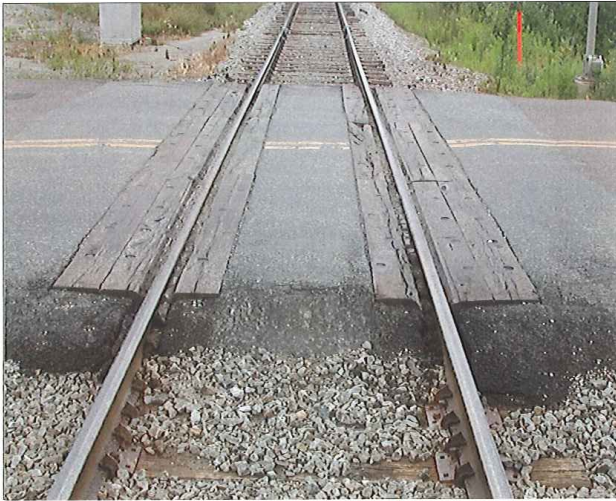
Drawing Title
NEW ENGLAND CENTRAL RAILROAD
 COX BROOK RD



Power Service Meter No.: _____
 Type Roadway Material: _____
 Railweight in Crossing: _____
 Roundel Size: _____

Railroad Crossing		City/Town	U.S. DOT. NO.	County
MP: 69.45		NORTHFIELD	247516E	
By:	Check By:	Drawn By:	Scale:	Date:
AE	RFO	AE	NTS	09-15-01

NC-135



DSCN3383

Looking South to North



DSCN3384

Looking North to South

PARSONS BRINCKERHOFF
QUADE and DOUGLAS, Inc.
 199. 75 Arlington St., Boston, MA

Drawing Title
NEW ENGLAND CENTRAL RAILROAD
COX BROOK RD



Power Service Meter No.: _____
 Type Roadway Material: _____
 Railweight in Crossing: _____
 Roundel Size: _____

Railroad Crossing		City/Town	U.S. DOT. NO.	County
MP: 69.45		NORTHFIELD	247516E	
By:	Check By:	Drawn By:	Scale:	Date:
AE	RFO	AE	NTS	09-15-01

NC-135



DSCN3385

Looking North to East



DSCN3386

Looking North to West

PB PARSONS BRINCKERHOFF
 QUADE and DOUGLAS, Inc.
 129. 75 Arlington St., Boston, MA

Drawing Title
NEW ENGLAND CENTRAL RAILROAD
 COX BROOK RD



Power Service Meter No.: _____
 Type Roadway Material: _____
 Railweight in Crossing: _____
 Roundel Size: _____

Railroad Crossing		City/Town	U.S. DOT. NO.	County
MP: 69.45		NORTHFIELD	247516E	
By:	Check By:	Drawn By:	Scale:	Date:
AE	RFO	AE	NTS	09-15-01

NC-135



DSCN3387

Looking West to East



DSCN3388

Looking west to North

PR PARSONS BRINCKERHOFF
 QUADE and DOUGLAS, Inc.
 75 Arlington St., Boston, MA

Drawing Title
NEW ENGLAND CENTRAL RAILROAD
COX BROOK RD



Power Service Meter No.: _____
 Type Roadway Material: _____
 Railweight in Crossing: _____
 Roundel Size: _____

Railroad Crossing		City/Town	U.S. DOT. NO.	County
MP: 69.45		NORTHFIELD	247516E	
By:	Check By:	Drawn By:	Scale:	Date:
AE	RFO	AE	NTS	09-15-01

NC-135



DSCN3389

Looking West to South



DSCN3390

Looking East to west

PR PARSONS BRINCKERHOFF
 QUADE and DOUGLAS, Inc.
 75 Arlington St., Boston, MA

Power Service Meter No.: _____
 Type Roadway Material: _____
 Railweight in Crossing: _____
 Roundel Size: _____

Drawing Title
NEW ENGLAND CENTRAL RAILROAD
 COX BROOK RD



Railroad Crossing		City/Town	U.S. DOT. NO.	County
MP: 69.45		NORTHFIELD	247516E	
By:	Check By:	Drawn By:	Scale:	Date:
AE	RFO	AE	NTS	09-15-01

NC-135





DSCN3391

Looking East to South



DSCN3392

Looking East to North

 PARSONS BRINCKERHOFF QUADE and DOUGLAS, Inc. 75 Arlington St., Boston, MA	Drawing Title NEW ENGLAND CENTRAL RAILROAD COX BROOK RD				
	Power Service Meter No.: _____ Type Roadway Material: _____ Railwright in Crossing: _____ Roundel Size: _____	Railroad Crossing MP: 69.45	City/Town NORTHFIELD	U.S. DOT. NO. 247516E	
	By: AE	Check By: RFO	Drawn By: AE	Scale: NTS	Date: 09-15-01
	NC-135				