



DSCN3349

Looking South to North



DSCN3350

Looking South to East

**PARSONS BRINCKERHOFF,**  
**QUADE DOUGLAS, INC.**  
 199, 75 Arlington St., Boston, MA

Drawing Title  
**NEW ENGLAND CENTRAL RAILROAD**  
**WATER ST.**



Power Service Meter No.: \_\_\_\_\_  
 Type Roadway Material: \_\_\_\_\_  
 Railweight in Crossing: \_\_\_\_\_  
 Roundel Size: \_\_\_\_\_

Railroad Crossing		City/Town	U.S. DOT. NO.	County
MP: 67.75		NORTHFIELD	247511V	
By:	Check By:	Drawn By:	Scale:	Date:
AE	RFO	AE	NTS	09-15-01

**NC-133**



DSCN3351

Looking South to West



DSCN3352

Looking North to South

**PARSONS BRINCKERHOFF,**  
**QUADE DOUGLAS, INC.**  
 199, 75 Arlington St., Boston, MA

Drawing Title  
**NEW ENGLAND CENTRAL RAILROAD**  
**WATER ST.**



Power Service Meter No.: \_\_\_\_\_  
 Type Roadway Material: \_\_\_\_\_  
 Railweight in Crossing: \_\_\_\_\_  
 Roundel Size: \_\_\_\_\_

Railroad Crossing		City/Town	U.S. DOT. NO.	County
MP: 67.75		NORTHFIELD	247511V	
By: AE	Check By: RFO	Drawn By: AE	Scale: NTS	Date: 09-15-01

**NC-133**



DSCN3353

Looking North to West



DSCN3354

Looking North to East

**PARSONS BRINCKERHOFF,**  
**QUADE DOUGLAS, INC.**  
 199, 75 Arlington St., Boston, MA

Drawing Title  
**NEW ENGLAND CENTRAL RAILROAD**  
**WATER ST.**



Power Service Meter No.: \_\_\_\_\_  
 Type Roadway Material: \_\_\_\_\_  
 Railweight in Crossing: \_\_\_\_\_  
 Roundel Size: \_\_\_\_\_

Railroad Crossing		City/Town	U.S. DOT. NO.	County
MP: 67.75		NORTHFIELD	247511V	
By:	Check By:	Drawn By:	Scale:	Date:
AE	RFO	AE	NTS	09-15-01

**NC-133**



DSCN3355

Looking East to west



DSCN3356

Looking East to North

**PARSONS BRINCKERHOFF,**  
**QUADE DOUGLAS, INC.**  
 100, 75 Arlington St., Boston, MA

Drawing Title  
**NEW ENGLAND CENTRAL RAILROAD**  
**WATER ST.**



Power Service Meter No.: \_\_\_\_\_  
 Type Roadway Material: \_\_\_\_\_  
 Railweight in Crossing: \_\_\_\_\_  
 Roundel Size: \_\_\_\_\_

Railroad Crossing		City/Town	U.S. DOT. NO.	County
MP: 67.75		NORTHFIELD	247511V	
By:	Check By:	Drawn By:	Scale:	Date:
AE	RFO	AE	NTS	09-15-01

**NC-133**





DSCN3357

Looking East to South



DSCN3358

Looking West to East

 <b>PARSONS BRINCKERHOFF,</b> <b>QUADE DOUGLAS, INC.</b> 199, 75 Arlington St., Boston, MA	Drawing Title <b>NEW ENGLAND CENTRAL RAILROAD</b> <b>WATER ST.</b>				
	Power Service Meter No.: _____ Type Roadway Material: _____ Railweight in Crossing: _____ Roundel Size: _____	Railroad Crossing MP: <del>67-75</del>	City/Town NORTHFIELD	U.S. DOT. NO. 247511V	
	By: AE	Check By: RFO	Drawn By: AE	Scale: NTS	Date: 09-15-01
	<b>NC-133</b>				



DSCN3359

Looking West to South



DSCN3360

Looking west to North

**PB** PARSONS BRINCKERHOFF,  
 QUADE DOUGLAS, INC.  
 120, 75 Arlington St., Boston, MA

Drawing Title  
**NEW ENGLAND CENTRAL RAILROAD**  
 WATER ST.



Power Service Meter No.: \_\_\_\_\_  
 Type Roadway Material: \_\_\_\_\_  
 Railweight in Crossing: \_\_\_\_\_  
 Roundel Size: \_\_\_\_\_

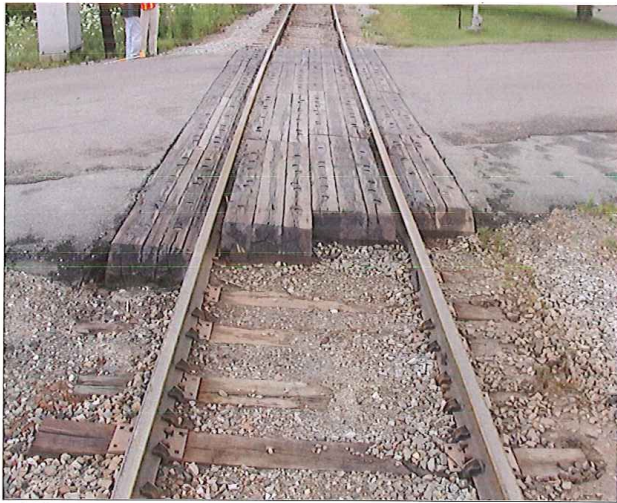
Railroad Crossing		City/Town	U.S. DOT. NO.	County
MP: <u>67.75</u>		NORTHFIELD	247511V	
By:	Check By:	Drawn By:	Scale:	Date:
AE	RFO	AE	NTS	09-15-01

**NC-133**



DSCN3361

Looking North to South



DSCN3362

Looking South to North

**PB** PARSONS BRINCKERHOFF  
 QUADE and DOUGLAS, Inc.  
 1200, 75 Arlington St., Boston, MA

Drawing Title  
**NEW ENGLAND CENTRAL RAILROAD**  
**WATER ST.**



Power Service Meter No.: \_\_\_\_\_  
 Type Roadway Material: \_\_\_\_\_  
 Railweight in Crossing: \_\_\_\_\_  
 Roundel Size: \_\_\_\_\_



Railroad Crossing		City/Town	U.S. DOT. NO.	County
MP: 67.75		NORTHFIELD	247511V	
By:	Check By:	Drawn By:	Scale:	Date:
AE	RFO	AE	NTS	09-15-01

**NC-133**



DSCN3363

Southeast Quadrant

 <b>PARSONS BRINCKERHOFF</b> QUADE and DOUGLAS, Inc. 100, 75 Arlington St., Boston, MA	Drawing Title <b>NEW ENGLAND CENTRAL RAILROAD</b> <b>WATER ST.</b>				
	Railroad Crossing MP: <u>67.75</u>	City/Town NORTHFIELD	U.S. DOT. NO. 247511V	County	
Power Service Meter No.: _____ Type Roadway Material: _____ Railweight in Crossing: _____ Roundel Size: _____	By: AE	Check By: RFO	Drawn By: AE	Scale: NTS	Date: 09-15-01