



DSCN3312

Looking South to North



DSCN3314

Looking South to West

PB PARSONS BRINCKERHOFF,
 QUADE DOUGLAS, INC.
 199. 75 Arlington St., Boston, MA

Drawing Title
NEW ENGLAND CENTRAL RAILROAD
 BEAUDETTE RD



Power Service Meter No.: _____
 Type Roadway Material: _____
 Railweight in Crossing: _____
 Roundel Size: _____

Railroad Crossing		City/Town	U.S. DOT. NO.	County
MP: 62.5		NORTHFIELD	247503D	
By:	Check By:	Drawn By:	Scale:	Date:
AE	RFO	AE	NTS	09-15-01

NC-131



DSCN3315

Looking South to East



DSCN3316

Looking North to South

PB PARSONS BRINCKERHOFF,
 QUADE DOUGLAS, INC.
 100, 75 Arlington St., Boston, MA

Drawing Title
NEW ENGLAND CENTRAL RAILROAD
 BEAUDETTE RD



Power Service Meter No.: _____
 Type Roadway Material: _____
 Railweight in Crossing: _____
 Roundel Size: _____

Railroad Crossing		City/Town	U.S. DOT. NO.	County
MP:	62.5	NORTHFIELD	247503D	
By:	Check By:	Drawn By:	Scale:	Date:
AE	RFO	AE	NTS	09-15-01

NC-131



DSCN3317

Looking North to East



DSCN3318

Looking North to West

PB PARSONS BRINCKERHOFF,
 QUADE DOUGLAS, INC.
 122, 75 Arlington St., Boston, MA

Drawing Title
**NEW ENGLAND CENTRAL RAILROAD
 BEAUDETTE RD**



Power Service Meter No.: _____
 Type Roadway Material: _____
 Railweight in Crossing: _____
 Roundel Size: _____

Railroad Crossing		City/Town	U.S. DOT. NO.	County
MP: 62.5		NORTHFIELD	247503D	
By:	Check By:	Drawn By:	Scale:	Date:
AE	RFO	AE	NTS	09-15-01

NC-131



DSCN3319

Looking East to West



DSCN3320

Looking East to North

PB PARSONS BRINCKERHOFF,
 QUADE DOUGLAS, INC.
 199, 75 Arlington St., Boston, MA

Drawing Title
NEW ENGLAND CENTRAL RAILROAD
 BEAUDETTE RD



Power Service Meter No.: _____
 Type Roadway Material: _____
 Railweight in Crossing: _____
 Roundel Size: _____

Railroad Crossing	City/Town	U.S. DOT. NO.	County
MP: 62.5	NORTHFIELD	247503D	
By: AE	Check By: RFO	Drawn By: AE	Scale: NTS
			Date: 09-15-01

NC-131



DSCN3321

Looking East to south



DSCN3322

Looking West to East

PB PARSONS BRINCKERHOFF,
 QUADE DOUGLAS, INC.
 100, 75 Arlington St., Boston, MA

Drawing Title
NEW ENGLAND CENTRAL RAILROAD
BEAUDETTE RD



Power Service Meter No.: _____
 Type Roadway Material: _____
 Railweight in Crossing: _____
 Roundel Size: _____

Railroad Crossing		City/Town	U.S. DOT. NO.	County
MP: 62.5		NORTHFIELD	247503D	
By:	Check By:	Drawn By:	Scale:	Date:
AE	RFO	AE	NTS	09-15-01

NC-131



DSCN3323

Looking West to North



DSCN3324

Looking West to North

PARSONS BRINCKERHOFF,
QUADE DOUGLAS, INC.
 100, 75 Arlington St., Boston, MA

Drawing Title
NEW ENGLAND CENTRAL RAILROAD
BEAUDETTE RD



Power Service Meter No.: _____
 Type Roadway Material: _____
 Railweight in Crossing: _____
 Roundel Size: _____

Railroad Crossing		City/Town	U.S. DOT. NO.	County
MP: 62.5		NORTHFIELD	247503D	
By:	Check By:	Drawn By:	Scale:	Date:
AE	RFO	AE	NTS	09-15-01

NC-131



DSCN3325

Looking West to South



DSCN3326

Looking South to North

PARSONS BRINCKERHOFF,
QUADE DOUGLAS, INC.
 199. 75 Arlington St., Boston, MA

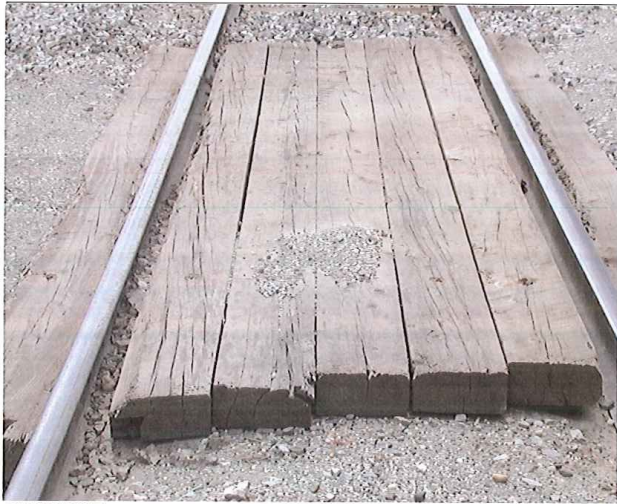
Drawing Title
NEW ENGLAND CENTRAL RAILROAD
 BEAUDETTE RD



Power Service Meter No.: _____
 Type Roadway Material: _____
 Railweight in Crossing: _____
 Roundel Size: _____

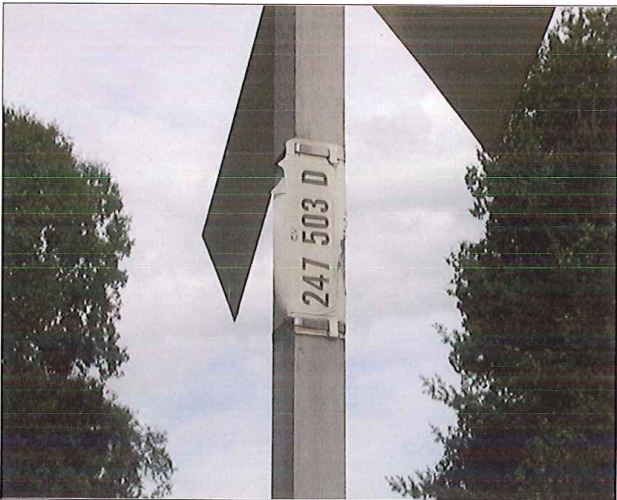
Railroad Crossing		City/Town	U.S. DOT. NO.	County
MP:	62.5	NORTHFIELD	247503D	
By:	Check By:	Drawn By:	Scale:	Date:
AE	RFO	AE	NTS	09-15-01

NC-131





DSCN3327

Looking North to South



DSCN3328

Northeast Quadrant

 PARSONS BRINCKERHOFF, QUADE DOUGLAS, INC. 199, 75 Arlington St., Boston, MA	Drawing Title NEW ENGLAND CENTRAL RAILROAD BEAUDETTE RD				
	Railroad Crossing MP: 62.5	City/Town NORTHFIELD	U.S. DOT. NO. 247503D	County	
Power Service Meter No.: _____ Type Roadway Material: _____ Railweight in Crossing: _____ Roundel Size: _____	By: AE	Check By: RFO	Drawn By: AE	Scale: NTS	Date: 09-15-01
					NC-131