



DSCN3296

Looking South to North



DSCN3297

Looking South to East

**PB** PARSONS BRINCKERHOFF  
 QUADE and DOUGLAS, Inc.  
 122. 75 Arlington St., Boston, MA

Drawing Title  
**NEW ENGLAND CENTRAL RAILROAD**  
 ELLIS RD



Power Service Meter No.: \_\_\_\_\_  
 Type Roadway Material: \_\_\_\_\_  
 Railweight in Crossing: \_\_\_\_\_  
 Roundel Size: \_\_\_\_\_

Railroad Crossing		City/Town	U.S. DOT. NO.	County
MP: 61.3		ROXBURY	247501P	
By:	Check By:	Drawn By:	Scale:	Date:
AE	RFO	AE	NTS	09-15-01

**NC-130**



DSCN3298

Looking South to West



DSCN3299

Looking North to South

**PB** PARSONS BRINCKERHOFF  
 QUADE and DOUGLAS, Inc.  
 100. 75 Arlington St., Boston, MA

Drawing Title  
**NEW ENGLAND CENTRAL RAILROAD**  
 ELLIS RD



Power Service Meter No.: \_\_\_\_\_  
 Type Roadway Material: \_\_\_\_\_  
 Railweight in Crossing: \_\_\_\_\_  
 Roundel Size: \_\_\_\_\_

Railroad Crossing		City/Town	U.S. DOT. NO.	County
MP: 61.3		ROXBURY	247501P	
By:	Check By:	Drawn By:	Scale:	Date:
AE	RFO	AE	NTS	09-15-01

**NC-130**



DSCN3300

Looking North to West



DSCN3301

Looking North to East

**PB** PARSONS BRINCKERHOFF  
 QUADE and DOUGLAS, Inc.  
 122. 75 Arlington St., Boston, MA

Drawing Title

**NEW ENGLAND CENTRAL RAILROAD**  
 ELLIS RD



Power Service Meter No.: \_\_\_\_\_  
 Type Roadway Material: \_\_\_\_\_  
 Railweight in Crossing: \_\_\_\_\_  
 Roundel Size: \_\_\_\_\_

Railroad Crossing		City/Town	U.S. DOT. NO.	County
MP: 61.3		ROXBURY	247501P	
By:	Check By:	Drawn By:	Scale:	Date:
AE	RFO	AE	NTS	09-15-01

**NC-130**



DSCN3302

Looking East to West



DSCN3303

Looking East to North

**PB** PARSONS BRINCKERHOFF  
 QUADE and DOUGLAS, Inc.  
 122. 75 Arlington St., Boston, MA

Drawing Title  
**NEW ENGLAND CENTRAL RAILROAD**  
 ELLIS RD



Power Service Meter No.: \_\_\_\_\_  
 Type Roadway Material: \_\_\_\_\_  
 Railweight in Crossing: \_\_\_\_\_  
 Roundel Size: \_\_\_\_\_

Railroad Crossing		City/Town	U.S. DOT. NO.	County
MP: 61.3		ROXBURY	247501P	
By:	Check By:	Drawn By:	Scale:	Date:
AE	RFO	AE	NTS	09-15-01

**NC-130**



DSCN3304

Looking East to South



DSCN3305

Looking West to East

**PB** PARSONS BRINCKERHOFF  
 QUADE and DOUGLAS, Inc.  
 199, 75 Arlington St., Boston, MA

Drawing Title  
**NEW ENGLAND CENTRAL RAILROAD**  
 ELLIS RD



Power Service Meter No.: \_\_\_\_\_  
 Type Roadway Material: \_\_\_\_\_  
 Railweight in Crossing: \_\_\_\_\_  
 Roundel Size: \_\_\_\_\_

Railroad Crossing		City/Town	U.S. DOT. NO.	County
MP: 61.3		ROXBURY	247501P	
By:	Check By:	Drawn By:	Scale:	Date:
AE	RFO	AE	NTS	09-15-01

**NC-130**



DSCN3306

Looking West to South



DSCN3307

Looking West to North

**PB** PARSONS BRINCKERHOFF  
 QUADE and DOUGLAS, Inc.  
 199, 75 Arlington St., Boston, MA

Drawing Title  
**NEW ENGLAND CENTRAL RAILROAD**  
 ELLIS RD



Power Service Meter No.: \_\_\_\_\_  
 Type Roadway Material: \_\_\_\_\_  
 Railweight in Crossing: \_\_\_\_\_  
 Roundel Size: \_\_\_\_\_

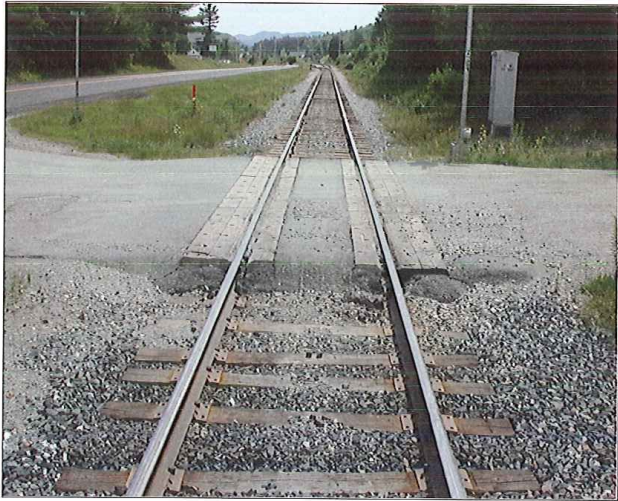
Railroad Crossing		City/Town	U.S. DOT. NO.	County
MP: 61.3		ROXBURY	247501P	
By:	Check By:	Drawn By:	Scale:	Date:
AE	RFO	AE	NTS	09-15-01

**NC-130**



DSCN3309

Looking South to North



DSCN3310

Looking North to South

**PB** PARSONS BRINCKERHOFF  
 QUADE and DOUGLAS, Inc.  
 122, 75 Arlington St., Boston, MA

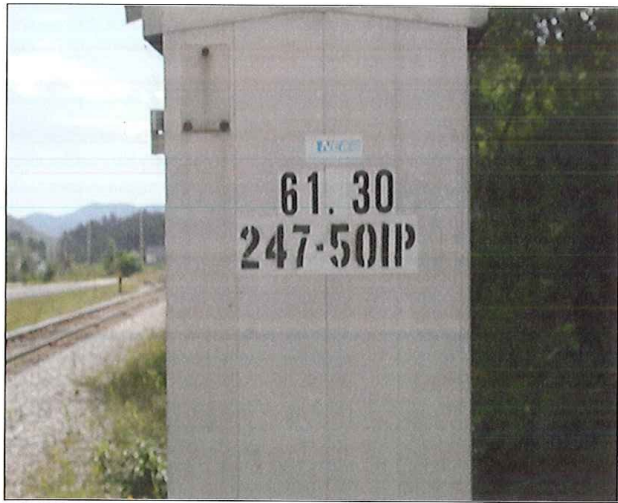
Drawing Title  
**NEW ENGLAND CENTRAL RAILROAD**  
 ELLIS RD



Power Service Meter No.: \_\_\_\_\_  
 Type Roadway Material: \_\_\_\_\_  
 Railweight in Crossing: \_\_\_\_\_  
 Roundel Size: \_\_\_\_\_



Railroad Crossing		City/Town	U.S. DOT. NO.	County
MP: 61.3		ROXBURY	247501P	
By:	Check By:	Drawn By:	Scale:	Date:
AE	RFO	AE	NTS	09-15-01

**NC-130**



DSCN3311

Southwest Quadrant

 <b>PARSONS BRINCKERHOFF</b> QUADE and DOUGLAS, Inc. 100, 75 Arlington St., Boston, MA	<b>Drawing Title</b> <b>NEW ENGLAND CENTRAL RAILROAD</b> ELLIS RD				
	<b>Railroad Crossing</b> MP: 61.3	<b>City/Town</b> ROXBURY	<b>U.S. DOT. NO.</b> 247501P	<b>County</b>	
<b>Power Service Meter No.:</b> _____ <b>Type Roadway Material:</b> _____ <b>Railweight In Crossing:</b> _____ <b>Roundel Size:</b> _____	<b>By:</b> AE	<b>Check By:</b> RFO	<b>Drawn By:</b> AE	<b>Scale:</b> NTS	<b>Date:</b> 09-15-01