



DSCN3280

Looking South to North



DSCN3281

Looking South to East



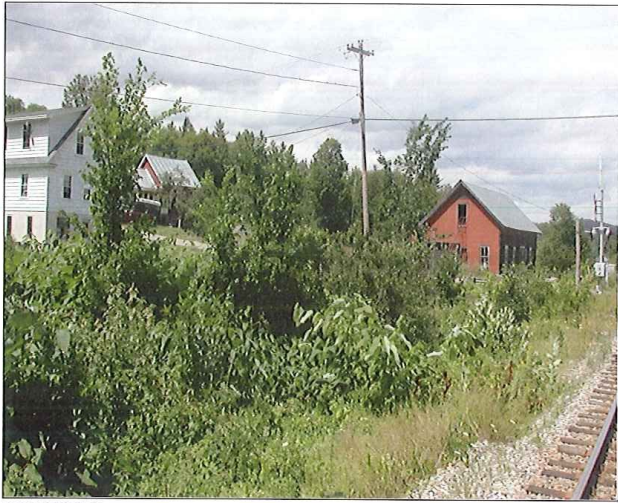
PARSONS BRINCKERHOFF
 QUADE and DOUGLAS, Inc.
 100, 75 Arlington St., Boston, MA

Drawing Title				
NEW ENGLAND CENTRAL RAILROAD				
WARREN MTN RD.				
Railroad Crossing	City/Town	U.S. DOT. NO.	County	
MP: 60.71	ROXBURY	247499R		
By:	Check By:	Drawn By:	Scale:	Date:
AE	RFO	AE	NTS	09-15-01



NC-129

Power Service Meter No.: _____
 Type Roadway Material: _____
 Railweight in Crossing: _____
 Roundel Size: _____



DSCN3282

Looking South to West



DSCN3283

Looking North to South

PB PARSONS BRINCKERHOFF
 QUADE and DOUGLAS, Inc.
 122, 75 Arlington St., Boston, MA

Drawing Title
NEW ENGLAND CENTRAL RAILROAD
 WARREN MTN RD.



Power Service Meter No.: _____
 Type Roadway Material: _____
 Railweight in Crossing: _____
 Roundel Size: _____

Railroad Crossing		City/Town	U.S. DOT. NO.	County
MP: 60.71		ROXBURY	247499R	
By:	Check By:	Drawn By:	Scale:	Date:
AE	RFO	AE	NTS	09-15-01

NC-129



DSCN3284

Looking North to West



DSCN3285

Looking North to East

PB PARSONS BRINCKERHOFF
 QUADE and DOUGLAS, Inc.
 189. 75 Arlington St., Boston, MA

Drawing Title
NEW ENGLAND CENTRAL RAILROAD
 WARREN MTN RD.



Power Service Meter No.: _____
 Type Roadway Material: _____
 Railweight in Crossing: _____
 Roundel Size: _____

Railroad Crossing		City/Town	U.S. DOT. NO.	County
MP: 60.71		ROXBURY	247499R	
By:	Check By:	Drawn By:	Scale:	Date:
AE	RFO	AE	NTS	09-15-01

NC-129



DSCN3286

Looking East to West



DSCN3287

Looking East to North

PB PARSONS BRINCKERHOFF
 QUADE and DOUGLAS, Inc.
 199, 75 Arlington St., Boston, MA

Drawing Title
NEW ENGLAND CENTRAL RAILROAD
 WARREN MTN RD.



Power Service Meter No.: _____
 Type Roadway Material: _____
 Railweight in Crossing: _____
 Roundel Size: _____

Railroad Crossing		City/Town	U.S. DOT. NO.	County
MP: 60.71		ROXBURY	247499R	
By:	Check By:	Drawn By:	Scale:	Date:
AE	RFO	AE	NTS	09-15-01

NC-129



DSCN3288

Looking East to South



DSCN3289

Looking West to East

PB PARSONS BRINCKERHOFF
 QUADE and DOUGLAS, Inc.
 199, 75 Arlington St., Boston, MA

Drawing Title
NEW ENGLAND CENTRAL RAILROAD
 WARREN MTN RD.



Power Service Meter No.: _____
 Type Roadway Material: _____
 Railweight in Crossing: _____
 Roundel Size: _____

Railroad Crossing		City/Town	U.S. DOT. NO.	County
MP: 60.71		ROXBURY	247499R	
By:	Check By:	Drawn By:	Scale:	Date:
AE	RFO	AE	NTS	09-15-01

NC-129



DSCN3290

Looking West to South



DSCN3291

Looking West to North

PB PARSONS BRINCKERHOFF
 QUADE and DOUGLAS, Inc.
 192. 75 Arlington St., Boston, MA

Drawing Title
NEW ENGLAND CENTRAL RAILROAD
 WARREN MTN RD.



Power Service Meter No.: _____
 Type Roadway Material: _____
 Railweight in Crossing: _____
 Roundel Size: _____

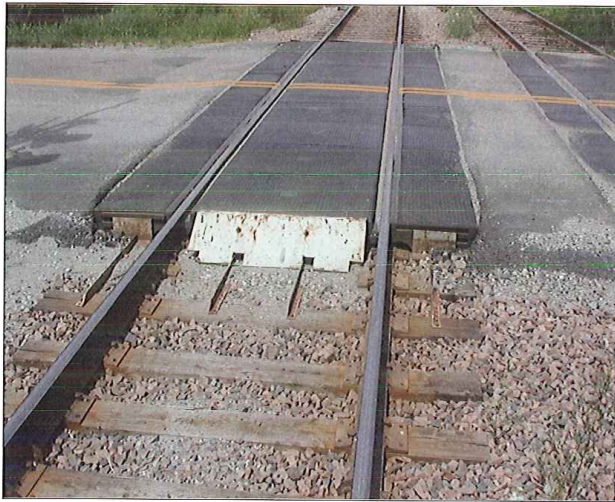
Railroad Crossing		City/Town	U.S. DOT. NO.	County
MP:	60.71	ROXBURY	247499R	
By:	Check By:	Drawn By:	Scale:	Date:
AE	RFO	AE	NTS	09-15-01

NC-129



DSCN3292

Looking West to North



DSCN3293

Looking South to North

PB PARSONS BRINCKERHOFF
 QUADE and DOUGLAS, Inc.
 122. 75 Arlington St., Boston, MA

Drawing Title

NEW ENGLAND CENTRAL RAILROAD
WARREN MTN RD.



Power Service Meter No.: _____
 Type Roadway Material: _____
 Railweight in Crossing: _____
 Roundel Size: _____

Railroad Crossing		City/Town	U.S. DOT. NO.	County
MP: 60.71		ROXBURY	247499R	
By:	Check By:	Drawn By:	Scale:	Date:
AE	RFO	AE	NTS	09-15-01

NC-129





DSCN3294

Looking North to South



DSCN3295

Northwest Quadrant

 PARSONS BRINCKERHOFF QUADE and DOUGLAS, Inc. 122. 75 Arlington St., Boston, MA	Drawing Title NEW ENGLAND CENTRAL RAILROAD WARREN MTN RD.				
	Power Service Meter No.: _____ Type Roadway Material: _____ Railweight in Crossing: _____ Roundel Size: _____	Railroad Crossing MP: 60.71	City/Town ROXBURY	U.S. DOT. NO. 247499R	
	By: AE	Check By: RFO	Drawn By: AE	Scale: NTS	Date: 09-15-01
	NC-129				