



DSCN3235

Looking South to North



DSCN3236

Looking South to West

**PB** PARSONS BRINCKERHOFF  
 QUADE and DOUGLAS, Inc.  
 188. 75 Arlington St., Boston, MA

Drawing Title  
**NEW ENGLAND CENTRAL RAILROAD**  
 THURSTON HILL RD



Power Service Meter No.: \_\_\_\_\_  
 Type Roadway Material: \_\_\_\_\_  
 Railweight In Crossing: \_\_\_\_\_  
 Roundel Size: \_\_\_\_\_

Railroad Crossing		City/Town	U.S. DOT. NO.	County
MP: 58.7		ROXBURY	247496V	
By:	Check By:	Drawn By:	Scale:	Date:
AE	RFO	AE	NTS	09-15-01

**NC-126**



DSCN3237

Looking South to East



DSCN3238

Looking North to South

**PB** PARSONS BRINCKERHOFF  
 QUADE and DOUGLAS, Inc.  
 100, 75 Arlington St., Boston, MA

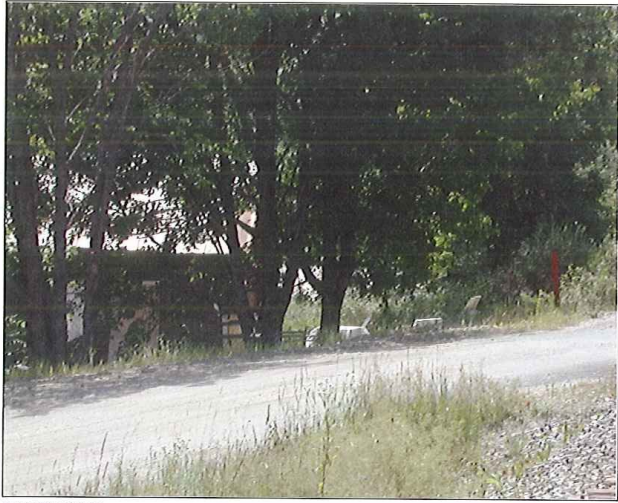
Drawing Title  
**NEW ENGLAND CENTRAL RAILROAD**  
 THURSTON HILL RD



Power Service Meter No.: \_\_\_\_\_  
 Type Roadway Material: \_\_\_\_\_  
 Railweight in Crossing: \_\_\_\_\_  
 Roundel Size: \_\_\_\_\_

Railroad Crossing		City/Town	U.S. DOT. NO.	County
MP: 58.7		ROXBURY	247496V	
By:	Check By:	Drawn By:	Scale:	Date:
AE	RFO	AE	NTS	09-15-01

**NC-126**



DSCN3239

Looking North to East



DSCN3240

Looking North to West

**PB** PARSONS BRINCKERHOFF  
 QUADE and DOUGLAS, Inc.  
 100. 75 Arlington St., Boston, MA

Drawing Title  
**NEW ENGLAND CENTRAL RAILROAD**  
 THURSTON HILL RD



Power Service Meter No.: \_\_\_\_\_  
 Type Roadway Material: \_\_\_\_\_  
 Railweight in Crossing: \_\_\_\_\_  
 Roundel Size: \_\_\_\_\_

Railroad Crossing		City/Town	U.S. DOT. NO.	County
MP: 58.71		ROXBURY	247496V	
By: AE	Check By: RFO	Drawn By: AE	Scale: NTS	Date: 09-15-01

**NC-126**



DSCN3241

Looking East to West



DSCN3242

Looking East to South

**PB** PARSONS BRINCKERHOFF  
 QUADE and DOUGLAS, Inc.  
 189, 75 Arlington St., Boston, MA

Drawing Title  
**NEW ENGLAND CENTRAL RAILROAD**  
 THURSTON HILL RD



Power Service Meter No.: \_\_\_\_\_  
 Type Roadway Material: \_\_\_\_\_  
 Railweight In Crossing: \_\_\_\_\_  
 Roundel Size: \_\_\_\_\_

Railroad Crossing		City/Town	U.S. DOT. NO.	County
MP:	58.7	ROXBURY	247496V	
By:	Check By:	Drawn By:	Scale:	Date:
AE	RFO	AE	NTS	09-15-01

**NC-126**



DSCN3243

Looking East to North



DSCN3244

Looking West to East

**PB** PARSONS BRINCKERHOFF  
 QUADE and DOUGLAS, Inc.  
 100, 75 Arlington St., Boston, MA

Drawing Title  
**NEW ENGLAND CENTRAL RAILROAD**  
 THURSTON HILL RD



Power Service Meter No.: \_\_\_\_\_  
 Type Roadway Material: \_\_\_\_\_  
 Railweight In Crossing: \_\_\_\_\_  
 Roundel Size: \_\_\_\_\_

Railroad Crossing		City/Town	U.S. DOT. NO.	County
MP: 58.7		ROXBURY	247496V	
By:	Check By:	Drawn By:	Scale:	Date:
AE	RFO	AE	NTS	09-15-01

**NC-126**



DSCN3245

Looking West to North



DSCN3246

Looking West to South

**PARSONS BRINCKERHOFF**  
**QUADE and DOUGLAS, Inc.**  
 129. 75 Arlington St., Boston, MA

Drawing Title  
**NEW ENGLAND CENTRAL RAILROAD**  
 THURSTON HILL RD



Power Service Meter No.: \_\_\_\_\_  
 Type Roadway Material: \_\_\_\_\_  
 Railweight in Crossing: \_\_\_\_\_  
 Roundel Size: \_\_\_\_\_

Railroad Crossing		City/Town	U.S. DOT. NO.	County
MP: 58.7		ROXBURY	247496V	
By:	Check By:	Drawn By:	Scale:	Date:
AE	RFO	AE	NTS	09-15-01

**NC-126**





DSCN3248

Looking South to North



DSCN3249

Looking North to South

 <b>PARSONS BRINCKERHOFF</b> QUADE and DOUGLAS, Inc. 100, 75 Arlington St., Boston, MA	Drawing Title <b>NEW ENGLAND CENTRAL RAILROAD</b> <b>THURSTON HILL RD</b>				
	Power Service Meter No.: _____ Type Roadway Material: _____ Railweight in Crossing: _____ Roundel Size: _____	Railroad Crossing MP: 58.7	City/Town ROXBURY	U.S. DOT. NO. 247496V	
	By: AE	Check By: RFO	Drawn By: AE	Scale: NTS	Date: 09-15-01
	<b>NC-126</b>				