

PARSONS BRINCKERHOFF
QUADE and DOUGLAS, Inc.
 789, 75 Arlington St., Boston, MA

NEW ENGLAND CENTRAL RAILROAD
COUNTRY RD
 U.S. DOT NO. 247246F
 City/Town SWANTON
 County



NC-178

By: AE
 Check By: RFO
 Drawn By: AE
 Scale: NTS
 Date: 09-15-01

Roundel Size:
 Railweight in Crossing:
 Type Roadway Material:
 Power Service Meter No.:

Railroad Crossing MP: 7.71
 City/Town SWANTON
 U.S. DOT NO. 247246F
 County

Drawing Title
 NEW ENGLAND CENTRAL RAILROAD
 COUNTRY RD
 U.S. DOT NO. 247246F

Looking South to East


DSCN4168



Looking South to North

DSCN4167



NC-178		Date: 09-15-01		NTS		AE		RFO		AE		Roundel Size:	
County		U.S. DOT NO. 247246F		Scale:		Drawn By:		Check By:		MP: 7.71		Railroad Crossing	
		City/Town SWANTON		City/Town SWANTON		Drawing Title		PARSONS BRINCKERHOFF QUADE and DOUGLAS, Inc. 189, 75 Arlington St., Boston, MA		Power Service Meter No.:		Type Roadway Material:	
NEW ENGLAND CENTRAL RAILROAD		COUNTRY RD		126F		NEW ENGLAND CENTRAL RAILROAD		189, 75 Arlington St., Boston, MA		Type Roadway Material:		Railweight in Crossing:	

Looking North to South


DSCN4170



Looking South to West

DSCN4169



NC-178 		Date: 09-15-01 Scale: 247246F U.S. DOT NO. 426F County:	By: AE Check By: RFO Drawn By: AE Scale: NTS Date: 09-15-01	Railroad Crossing: MP: 7.71 City/Town: SWANTON U.S. DOT NO.: 247246F County:	Power Service Meter No.: Type Roadway Material: Railweight In Crossing: Roundel Size:
Drawing Title NEW ENGLAND CENTRAL RAILROAD COUNTRY RD		PARSONS BRINCKERHOFF QUADE and DOUGLAS, Inc. 100, 75 Arlington St., Boston, MA			

Looking North to East

DSCN4172

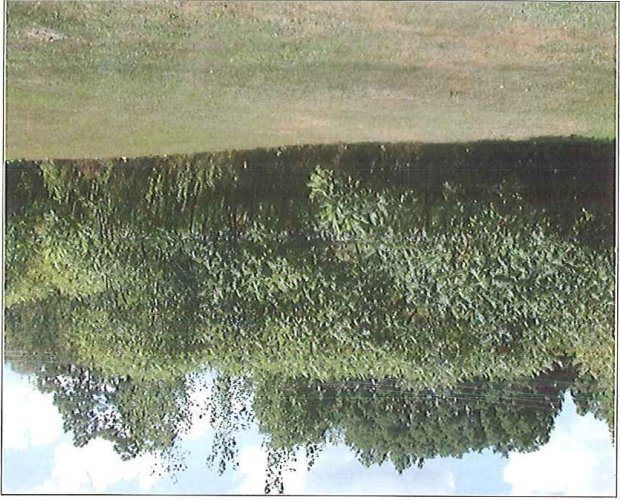


Looking North to West

DSCN4171



NC-178		Date: 09-15-01	
County:		U.S. DOT. NO. 247246F	
Railroad Crossing:		City/Town: SWANTON	
By: AE		Scale:	
Check By: RFO		Drawn By: AE	
MP: 7.71		NTS:	
Drawing Title:			
PARSONS BRINCKERHOFF 199, 75 Arlington St., Boston, MA		NEW ENGLAND CENTRAL RAILROAD COUNTRY RD <i>426F</i>	
Power Service Meter No.:		VTTRANS	
Type Roadway Material:			
Right of Way in Crossing:			
Roundel Size:			




Looking West to South

DSCN4174



Looking West to East

DSCN4173

NC-178 	Date: 09-15-01	Scale: NTS	Drawn By: AE	RFO:	AE:	By:	Check By:	Roundel Size:	
	County:	U.S. DOT NO. 247246F	City/Town: SWANTON	MP: 7.71	Railroad Crossing:	Railroad Crossing:	Type Roadway Material:	Rail Weight In Crossing:	Power Service Meter No.:
Drawing Title: NEW ENGLAND CENTRAL RAILROAD COUNTRY RD <i>426F</i>		PARSONS BRINCKERHOFF 100, 75 Arlington St., Boston, MA			QUADE and DOUGLAS, Inc. 100, 75 Arlington St., Boston, MA				

Looking East to West

DSCN4176



Looking West to North

DSCN4175



	Drawing Title NEW ENGLAND CENTRAL RAILROAD COUNTRY RD		U.S. DOT. NO. 247246F City/Town SWANTON County		Date: 09-15-01
	NC-178	By: AE Check By: RFO	Drawn By: AE Scale: NTS	MP: 7.71 City/Town SWANTON	Railroad Crossing
Power Service Meter No.: Type Roadway Material: Right-of-Way Crossing: Roundel Size:		PARSONS BRINCKERHOFF QUADE and DOUGLAS, Inc. 188, 75 Arlington St., Boston, MA			

Looking East to South

DSCN4178



Looking East to North

DSCN4177



NC-178		Date: 09-15-01		AE NTS		RFO		Roundel Size:	
County		U.S. DOT. NO. 247246F		Drawn By: SWANTON		Check By: 7.71		Type Roadway Material:	
City/Town		U.S. DOT. NO.		MP: 7.71		Railroad Crossing		Power Service Meter No.:	
Scale:		City/Town		MP: 7.71		Railroad Crossing		Type Roadway Material:	
Date:		U.S. DOT. NO.		MP: 7.71		Railroad Crossing		Type Roadway Material:	
Date:		U.S. DOT. NO.		MP: 7.71		Railroad Crossing		Type Roadway Material:	
Date:		U.S. DOT. NO.		MP: 7.71		Railroad Crossing		Type Roadway Material:	



NEW ENGLAND CENTRAL RAILROAD
COUNTRY RD
126F

PARSONS BRINCKERHOFF
79, 75 Arlington St., Boston, MA
QUADE and DOUGLAS, Inc.

Looking South to North

DSCN4180



Looking South to North

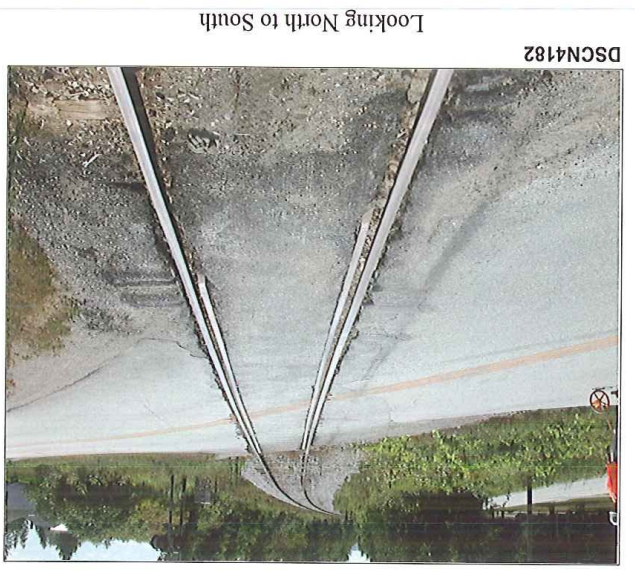
DSCN4179



NC-178	Roundel Size:		Power Service Meter No.:	
	Rail/Height In Crossing:		Type Roadway Material:	
By: AE		MP: 7.71		City/Town
Check By: RFO		U.S. DOT NO.		
Drawn By: AE		247246F		County
Scale: NTS		Date:		
09-15-01		U.S. DOT NO.		

PARSONS BRINCKERHOFF
189, 75 Arlington St., Boston, MA
QUADE and DOUGLAS, Inc.

Drawing Title
NEW ENGLAND CENTRAL RAILROAD
COUNTRY RD



Looking North to South

DSCN4182



Looking North to South

DSCN4181