



DSCN4152

Looking South to North



DSCN4153

Looking South to West

**PB** PARSONS BRINCKERHOFF  
 QUADE and DOUGLAS, Inc.  
 122, 75 Arlington St., Boston, MA

Drawing Title  
**NEW ENGLAND CENTRAL RAILROAD**  
**COMSTOCK RD**



Power Service Meter No.: \_\_\_\_\_  
 Type Roadway Material: \_\_\_\_\_  
 Railweight in Crossing: \_\_\_\_\_  
 Roundel Size: \_\_\_\_\_

Railroad Crossing		City/Town	U.S. DOT. NO. <input checked="" type="checkbox"/>	County
MP: 3.97		SWANTON	247419Y	
By: AE	Check By: RFO	Drawn By: AE	Scale: NTS	Date: 09-15-01

**NC-177**



DSCN4154

Looking South to East



DSCN4155

Looking North to South

**PB** PARSONS BRINCKERHOFF  
 QUADE and DOUGLAS, Inc.  
 198, 75 Arlington St., Boston, MA

Drawing Title  
**NEW ENGLAND CENTRAL RAILROAD**  
 COMSTOCK RD



Power Service Meter No.: \_\_\_\_\_  
 Type Roadway Material: \_\_\_\_\_  
 Railweight in Crossing: \_\_\_\_\_  
 Roundel Size: \_\_\_\_\_

Railroad Crossing		City/Town	U.S. DOT. NO.	County
MP: 3.97		SWANTON	247419Y	
By:	Check By:	Drawn By:	Scale:	Date:
AE	RFO	AE	NTS	09-15-01

**NC-177**



DSCN4156

Looking North to East



DSCN4157

Looking North to West

**PB** PARSONS BRINCKERHOFF  
 QUADE and DOUGLAS, Inc.  
 1222, 75 Arlington St., Boston, MA

Drawing Title  
**NEW ENGLAND CENTRAL RAILROAD**  
**COMSTOCK RD**



Power Service Meter No.: \_\_\_\_\_  
 Type Roadway Material: \_\_\_\_\_  
 Railweight in Crossing: \_\_\_\_\_  
 Roundel Size: \_\_\_\_\_

Railroad Crossing		City/Town	U.S. DOT. NO.	County
MP: 3.97		SWANTON	247419X	
By:	Check By:	Drawn By:	Scale:	Date:
AE	RFO	AE	NTS	09-15-01

**NC-177**



DSCN4164

Looking South to North



DSCN4165

Looking North to South

**PB** PARSONS BRINCKERHOFF  
 QUADE and DOUGLAS, Inc.  
 1899, 75 Arlington St., Boston, MA

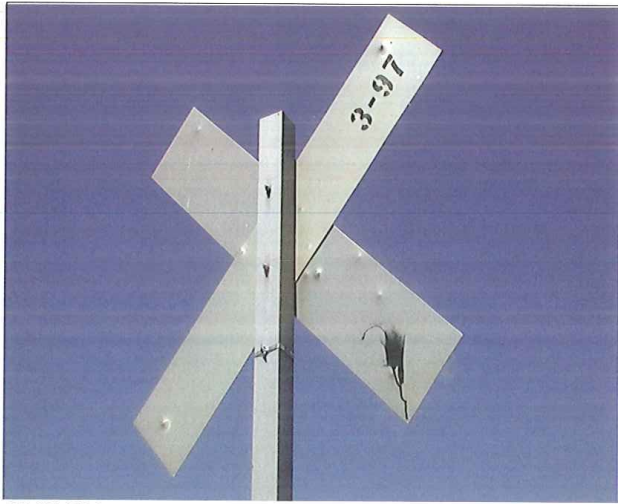
Drawing Title  
**NEW ENGLAND CENTRAL RAILROAD**  
 COMSTOCK RD



Power Service Meter No.: \_\_\_\_\_  
 Type Roadway Material: \_\_\_\_\_  
 Railweight in Crossing: \_\_\_\_\_  
 Roundel Size: \_\_\_\_\_



Railroad Crossing		City/Town	U.S. DOT. NO.	County
MP: 3.97		SWANTON	247419Y	
By: AE	Check By: RFO	Drawn By: AE	Scale: NTS	Date: 09-15-01

**NC-177**



DSCN4166

Southwest Quadrant

 <b>PARSONS BRINCKERHOFF</b> QUADE and DOUGLAS, Inc. 122. 75 Arlington St., Boston, MA	Drawing Title <b>NEW ENGLAND CENTRAL RAILROAD</b> COMSTOCK RD				
	Railroad Crossing MP: 3.97	City/Town SWANTON	U.S. DOT. NO. 247419Y	County	
Power Service Meter No.: _____ Type Roadway Material: _____ Railweight in Crossing: _____ Roundel Size: _____	By: AE	Check By: RFO	Drawn By: AE	Scale: NTS	Date: 09-15-01



DSCN4158

Looking East to West



DSCN4159

Looking East to South

**PB** PARSONS BRINCKERHOFF  
 QUADE and DOUGLAS, Inc.  
 199, 75 Arlington St., Boston, MA

Drawing Title  
**NEW ENGLAND CENTRAL RAILROAD**  
 COMSTOCK RD



Power Service Meter No.: \_\_\_\_\_  
 Type Roadway Material: \_\_\_\_\_  
 Railweight in Crossing: \_\_\_\_\_  
 Roundel Size: \_\_\_\_\_

Railroad Crossing		City/Town	U.S. DOT. NO.	County
MP: 3.97		SWANTON	247419X	
By:	Check By:	Drawn By:	Scale:	Date:
AE	RFO	AE	NTS	09-15-01

**NC-177**



DSCN4160

Looking East to North



DSCN4161

Looking West to East

**PB** PARSONS BRINCKERHOFF  
 QUADE and DOUGLAS, Inc.  
 75 Arlington St., Boston, MA

Power Service Meter No.: \_\_\_\_\_  
 Type Roadway Material: \_\_\_\_\_  
 Railweight in Crossing: \_\_\_\_\_  
 Roundel Size: \_\_\_\_\_

Drawing Title  
**NEW ENGLAND CENTRAL RAILROAD**  
 COMSTOCK RD



Railroad Crossing		City/Town	U.S. DOT. NO.	County
MP: 3.97		SWANTON	247419X	
By:	Check By:	Drawn By:	Scale:	Date:
AE	RFO	AE	NTS	09-15-01

**NC-177**



DSCN4162

Looking West to North



DSCN4163

Looking West to South

**PB** PARSONS BRINCKERHOFF  
 QUADE and DOUGLAS, Inc.  
 199, 75 Arlington St., Boston, MA

Drawing Title  
**NEW ENGLAND CENTRAL RAILROAD**  
 COMSTOCK RD



Power Service Meter No.: \_\_\_\_\_  
 Type Roadway Material: \_\_\_\_\_  
 Railweight in Crossing: \_\_\_\_\_  
 Roundel Size: \_\_\_\_\_

Railroad Crossing		City/Town	U.S. DOT. NO.	County
MP: 3.97		SWANTON	247419Y	
By:	Check By:	Drawn By:	Scale:	Date:
AE	RFO	AE	NTS	09-15-01

**NC-177**