



DSCN4118

Looking South to North



DSCN4119

Looking South to East

PB PARSONS BRINCKERHOFF
 QUADE and DOUGLAS, Inc.
 199. 75 Arlington St., Boston, MA

Drawing Title
NEW ENGLAND CENTRAL RAILROAD
 NEWTON RD



Power Service Meter No.: _____
 Type Roadway Material: _____
 Railwright in Crossing: _____
 Roundel Size: _____

Railroad Crossing		City/Town	U.S. DOT. NO.	County
MP: 2.6		ST. ALBANS	247417G	
By: AE	Check By: RFO	Drawn By: AE	Scale: NTS	Date: 09-15-01

NC-175



DSCN4120

Looking South to West



DSCN4121

Looking North to South

PB PARSONS BRINCKERHOFF
 QUADE and DOUGLAS, Inc.
 75 Arlington St., Boston, MA

Drawing Title
NEW ENGLAND CENTRAL RAILROAD
 NEWTON RD



Power Service Meter No.: _____
 Type Roadway Material: _____
 Railweight in Crossing: _____
 Roundel Size: _____

Railroad Crossing		City/Town	U.S. DOT. NO.	County
MP: 2.6		ST. ALBANS	247417G	
By:	Check By:	Drawn By:	Scale:	Date:
AE	RFO	AE	NTS	09-15-01

NC-175



DSCN4122

Looking North to West



DSCN4123

Looking North to East

PB PARSONS BRINCKERHOFF
 QUADE and DOUGLAS, Inc.
 120, 75 Arlington St., Boston, MA

Drawing Title
NEW ENGLAND CENTRAL RAILROAD
 NEWTON RD



Power Service Meter No.: _____
 Type Roadway Material: _____
 Railweight in Crossing: _____
 Roundel Size: _____

Railroad Crossing		City/Town	U.S. DOT. NO.	County
MP: 2.6		ST. ALBANS	247417G	
By:	Check By:	Drawn By:	Scale:	Date:
AE	RFO	AE	NTS	09-15-01

NC-175



DSCN4124

Looking West to East



DSCN4125

Looking West to South

PB PARSONS BRINCKERHOFF
 QUADE and DOUGLAS, Inc.
 75 Arlington St., Boston, MA

Drawing Title
NEW ENGLAND CENTRAL RAILROAD
 NEWTON RD



Power Service Meter No.: _____
 Type Roadway Material: _____
 Railweight in Crossing: _____
 Roundel Size: _____

Railroad Crossing		City/Town	U.S. DOT. NO.	County
MP: 2.6		ST. ALBANS	247417G	
By: AE	Check By: RFO	Drawn By: AE	Scale: NTS	Date: 09-15-01

NC-175



DSCN4126

Looking West to North



DSCN4127

Looking East to West

PB PARSONS BRINCKERHOFF
 QUADE and DOUGLAS, Inc.
 199, 75 Arlington St., Boston, MA

Drawing Title
NEW ENGLAND CENTRAL RAILROAD
 NEWTON RD



Power Service Meter No.: _____
 Type Roadway Material: _____
 Railwight in Crossing: _____
 Roundel Size: _____

Railroad Crossing		City/Town	U.S. DOT. NO.	County
MP: 2.6		ST. ALBANS	247417G	
By: AE	Check By: RFO	Drawn By: AE	Scale: NTS	Date: 09-15-01

NC-175



DSCN4128

Looking East to North



DSCN4129

Looking East to South

PB PARSONS BRINCKERHOFF
 QUADE and DOUGLAS, Inc.
 188. 75 Arlington St., Boston, MA

Drawing Title
NEW ENGLAND CENTRAL RAILROAD
 NEWTON RD



Power Service Meter No.: _____
 Type Roadway Material: _____
 Railweight in Crossing: _____
 Roundel Size: _____

Railroad Crossing		City/Town	U.S. DOT. NO.	County
MP: 2.6		ST. ALBANS	247417G	
By:	Check By:	Drawn By:	Scale:	Date:
AE	RFO	AE	NTS	09-15-01

NC-175



DSCN4130

Looking South to North



DSCN4131

Looking South to North

PB PARSONS BRINCKERHOFF
 QUADE and DOUGLAS, Inc.
 188. 75 Arlington St., Boston, MA

Drawing Title
NEW ENGLAND CENTRAL RAILROAD
 NEWTON RD



Power Service Meter No.: _____
 Type Roadway Material: _____
 Railweight in Crossing: _____
 Roundel Size: _____

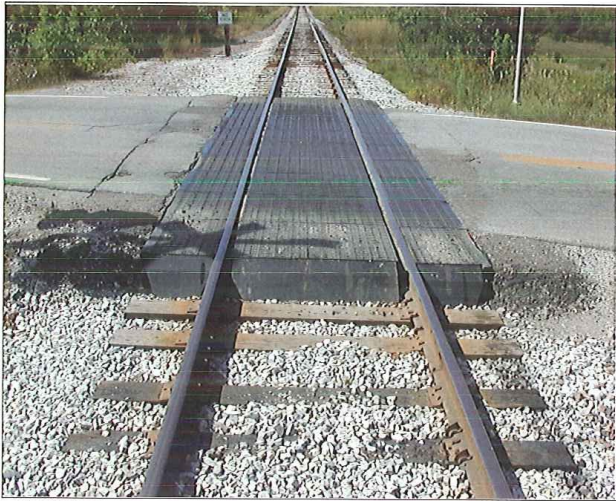
Railroad Crossing		City/Town	U.S. DOT. NO.	County
MP: 2.6		ST. ALBANS	247417G	
By:	Check By:	Drawn By:	Scale:	Date:
AE	RFO	AE	NTS	09-15-01

NC-175



DSCN4132

Looking North to South



DSCN4133

Looking North to South

PB PARSONS BRINCKERHOFF
 QUADE and DOUGLAS, Inc.
 128. 75 Arlington St., Boston, MA

Drawing Title
NEW ENGLAND CENTRAL RAILROAD
 NEWTON RD



Power Service Meter No.: _____
 Type Roadway Material: _____
 Railweight in Crossing: _____
 Roundel Size: _____



Railroad Crossing		City/Town	U.S. DOT. NO.	County
MP:	2.6	ST. ALBANS	247417G	
By:	Check By:	Drawn By:	Scale:	Date:
AE	RFO	AE	NTS	09-15-01

NC-175



DSCN4134

Northwest Quadrant

 PARSONS BRINCKERHOFF QUADE and DOUGLAS, Inc. 100 75 Arlington St., Boston, MA	Drawing Title NEW ENGLAND CENTRAL RAILROAD NEWTON RD				
	Railroad Crossing MP: 2.6	City/Town ST. ALBANS	U.S. DOT. NO. 247417G	County	
Power Service Meter No.: _____ Type Roadway Material: _____ Railweight in Crossing: _____ Roundel Size: _____	By: AE	Check By: RFO	Drawn By: AE	Scale: NTS	Date: 09-15-01