



DSCN3996

Looking South to North



DSCN3997

Looking South to East

PB PARSONS BRINCKERHOFF
 QUADE and DOUGLAS, Inc.
 129. 75 Arlington St., Boston, MA

Drawing Title
NEW ENGLAND CENTRAL RAILROAD
 CONGER RD



Power Service Meter No.: _____
 Type Roadway Material: _____
 Railweight in Crossing: _____
 Roundel Size: _____

Railroad Crossing		City/Town	U.S. DOT. NO.	County
MP: 128.2		GEORGIA	247399L	
By:	Check By:	Drawn By:	Scale:	Date:
AE	RFO	AE	NTS	09-15-01

NC-168



DSCN3998

Looking South to West



DSCN3999

Looking North to South

PB PARSONS BRINCKERHOFF
 QUAE and DOUGLAS, Inc.
 122. 75 Arlington St., Boston, MA

Drawing Title
NEW ENGLAND CENTRAL RAILROAD
 CONGER RD



Power Service Meter No.: _____
 Type Roadway Material: _____
 Railweight in Crossing: _____
 Roundel Size: _____

Railroad Crossing MP: 128.2		City/Town GEORGIA	U.S. DOT. NO. 247399L	County
By: AE	Check By: RFO	Drawn By: AE	Scale: NTS	Date: 09-15-01

NC-168



DSCN4000

Looking North to West



DSCN4001

Looking North to East

PARSONS BRINCKERHOFF
QUADE and DOUGLAS, Inc.
 122. 75 Arlington St., Boston, MA

Drawing Title
NEW ENGLAND CENTRAL RAILROAD
 CONGER RD



Power Service Meter No.: _____
 Type Roadway Material: _____
 Railweight in Crossing: _____
 Roundel Size: _____

Railroad Crossing		City/Town	U.S. DOT. NO.	County
MP: 128.2		GEORGIA	247399L	
By:	Check By:	Drawn By:	Scale:	Date:
AE	RFO	AE	NTS	09-15-01

NC-168



DSCN4002

Looking West to East



DSCN4003

Looking West to South

PARSONS BRINCKERHOFF
QUADE and DOUGLAS, Inc.
 129. 75 Arlington St., Boston, MA

Drawing Title
NEW ENGLAND CENTRAL RAILROAD
CONGER RD



Power Service Meter No.: _____
 Type Roadway Material: _____
 Railroad Right in Crossing: _____
 Roundel Size: _____

Railroad Crossing		City/Town	U.S. DOT. NO.	County
MP: 128.2		GEORGIA	247399L	
By:	Check By:	Drawn By:	Scale:	Date:
AE	RFO	AE	NTS	09-15-01

NC-168



DSCN4004

Looking West to North



DSCN4005

Looking East to West

PARSONS BRINCKERHOFF
QUADE and DOUGLAS, Inc.
 100, 75 Arlington St., Boston, MA

Drawing Title
NEW ENGLAND CENTRAL RAILROAD
CONGER RD



Power Service Meter No.: _____
 Type Roadway Material: _____
 Railweight in Crossing: _____
 Roundel Size: _____

Railroad Crossing		City/Town	U.S. DOT. NO.	County
MP: 128.2		GEORGIA	247399L	
By:	Check By:	Drawn By:	Scale:	Date:
AE	RFO	AE	NTS	09-15-01

NC-168



DSCN4006

Looking East to North



DSCN4007

Looking East to South

PB PARSONS BRINCKERHOFF
 QUADE and DOUGLAS, Inc.
 75 Arlington St., Boston, MA

Drawing Title
NEW ENGLAND CENTRAL RAILROAD
 CONGER RD



Power Service Meter No.: _____
 Type Roadway Material: _____
 Railwright In Crossing: _____
 Roundel Size: _____

Railroad Crossing		City/Town	U.S. DOT. NO.	County
MP: 128.2		GEORGIA	247399L	
By:	Check By:	Drawn By:	Scale:	Date:
AE	RFO	AE	NTS	09-15-01

NC-168



DSCN4008

Looking South to North



DSCN4009

Looking South to North

PB PARSONS BRINCKERHOFF
 QUADE and DOUGLAS, Inc.
 100, 75 Arlington St., Boston, MA

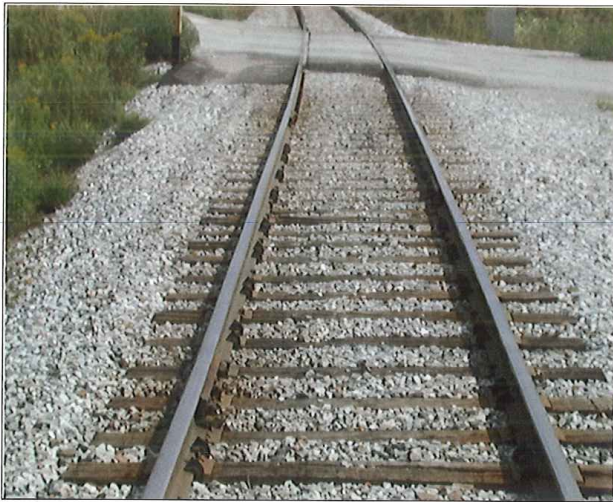
Drawing Title
NEW ENGLAND CENTRAL RAILROAD
 CONGER RD



Power Service Meter No.: _____
 Type Roadway Material: _____
 Railweight in Crossing: _____
 Roundel Size: _____

Railroad Crossing		City/Town	U.S. DOT. NO.	County
MP: 128.2		GEORGIA	247399L	
By:	Check By:	Drawn By:	Scale:	Date:
AE	RFO	AE	NTS	09-15-01

NC-168



DSCN4010

Looking North to South



DSCN4011

Looking North to South

PARSONS BRINCKERHOFF
QUADE and DOUGLAS, Inc.
 122. 75 Arlington St., Boston, MA

Drawing Title
NEW ENGLAND CENTRAL RAILROAD
CONGER RD



Power Service Meter No.: _____
 Type Roadway Material: _____
 Railweight in Crossing: _____
 Roundel Size: _____

Railroad Crossing		City/Town	U.S. DOT. NO.	County
MP: 128.2		GEORGIA	247399L	
By:	Check By:	Drawn By:	Scale:	Date:
AE	RFO	AE	NTS	09-15-01

NC-168



DSCN4012

Southwest Quadrant

PB PARSONS BRINCKERHOFF
 QUAE and DOUGLAS, Inc.
 129. 75 Arlington St., Boston, MA

Drawing Title
NEW ENGLAND CENTRAL RAILROAD
 CONGER RD



Power Service Meter No.: _____
 Type Roadway Material: _____
 Railwright in Crossing: _____
 Roundel Size: _____

Railroad Crossing		City/Town	U.S. DOT. NO.	County
MP: 128.2		GEORGIA	247339L	
By:	Check By:	Drawn By:	Scale:	Date:
AE	RFO	AE	NTS	09-15-01

NC-168