



DSCN3879

Looking South to North



DSCN3880

Looking South to East

**PB** PARSONS BRINCKERHOFF  
 QUADE and DOUGLAS, Inc.  
 188, 75 Arlington St., Boston, MA

Drawing Title  
**NEW ENGLAND CENTRAL RAILROAD**  
**KINGSBURY ST.**



Power Service Meter No.: \_\_\_\_\_  
 Type Roadway Material: Asphalt  
 Railweight in Crossing: 115  
 Roundel Size: \_\_\_\_\_

Railroad Crossing		City/Town	U.S. DOT. NO.	County
MP: 118.1		MILTON	247383P	
By:	Check By:	Drawn By:	Scale:	Date:
AE	RFO	AE	NTS	09-15-01

**NC-161**



DSCN3881

Looking South to North



DSCN3882

Looking North to South

**PB** PARSONS BRINCKERHOFF  
 QUADE and DOUGLAS, Inc.  
 189. 75 Arlington St., Boston, MA

Drawing Title  
**NEW ENGLAND CENTRAL RAILROAD**  
**KINGSBURY ST.**



Power Service Meter No.: \_\_\_\_\_  
 Type Roadway Material: \_\_\_\_\_  
 Railweight in Crossing: \_\_\_\_\_  
 Roundel Size: \_\_\_\_\_

Railroad Crossing		City/Town	U.S. DOT. NO.	County
MP: 118.1		MILTON	247383P	
By:	Check By:	Drawn By:	Scale:	Date:
AE	RFO	AE	NTS	09-15-01

**NC-161**



DSCN3883

Looking North to West



DSCN3884

Looking North to East

**PB** PARSONS BRINCKERHOFF  
 QUADE and DOUGLAS, Inc.  
 199, 75 Arlington St., Boston, MA

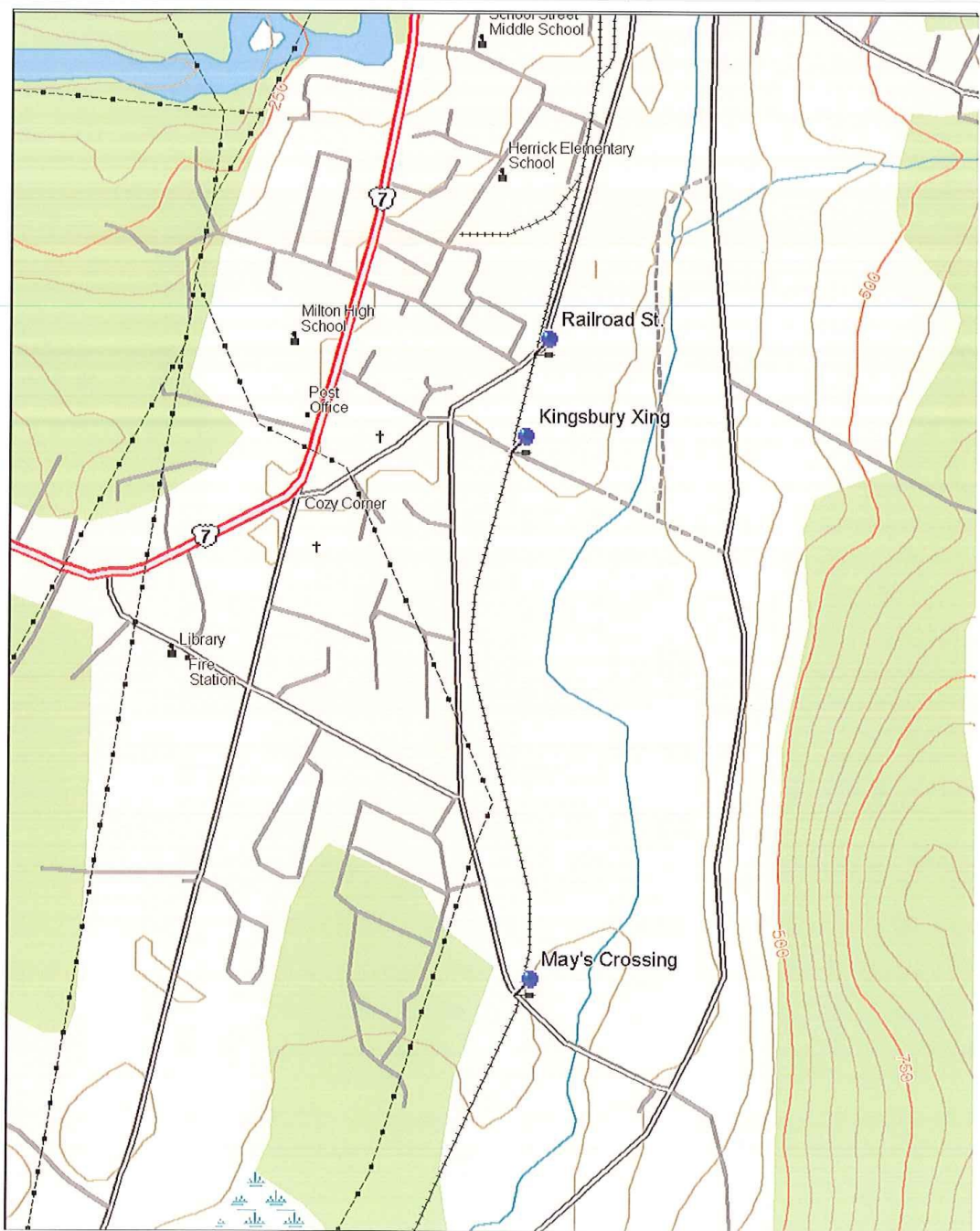
Drawing Title  
**NEW ENGLAND CENTRAL RAILROAD**  
**KINGSBURY ST.**



Power Service Meter No.: \_\_\_\_\_  
 Type Roadway Material: \_\_\_\_\_  
 Railweight in Crossing: \_\_\_\_\_  
 Roundel Size: \_\_\_\_\_

Railroad Crossing	City/Town	U.S. DOT. NO.	County
MP: 118.1	MILTON	247383P	
By: AE	Check By: RFO	Drawn By: AE	Scale: NTS
			Date: 09-15-01

**NC-161**



**PB**  
120  
PARSONS, BRINCKERHOFF,  
QUADE & DOUGLAS, INC.  
75 Arlington St., Boston, MA

Drawing Title  
**NEW ENGLAND CENTRAL RAILROAD  
KINGSBURY ST**



Railroad Crossing MP: 118.22	City/Town MILTON	U.S. DOT. NO. 247-383P	County CHITTENDEN
By:	Check By:	Drawn By: DLF	Scale: NTS
		Date: 8/27/01	

**NC-161**



DSCN3885

Looking West to East



DSCN3886

Looking West to South

**PB** PARSONS BRINCKERHOFF  
 QUADE and DOUGLAS, Inc.  
 122. 75 Arlington St., Boston, MA

Drawing Title  
**NEW ENGLAND CENTRAL RAILROAD**  
**KINGSBURY ST.**



Power Service Meter No.: \_\_\_\_\_  
 Type Roadway Material: \_\_\_\_\_  
 Railweight in Crossing: \_\_\_\_\_  
 Roundel Size: \_\_\_\_\_

Railroad Crossing		City/Town	U.S. DOT. NO.	County
MP: 118.1		MILTON	247383P	
By:	Check By:	Drawn By:	Scale:	Date:
AE	RFO	AE	NTS	09-15-01

**NC-161**



DSCN3887

Looking West to North



DSCN3888

Looking East to West

**PB** PARSONS BRINCKERHOFF  
 QUADE and DOUGLAS, Inc.  
 199. 75 Arlington St., Boston, MA

Drawing Title  
**NEW ENGLAND CENTRAL RAILROAD**  
**KINGSBURY ST.**



Power Service Meter No.: \_\_\_\_\_  
 Type Roadway Material: \_\_\_\_\_  
 Railweight in Crossing: \_\_\_\_\_  
 Roundel Size: \_\_\_\_\_

Railroad Crossing		City/Town	U.S. DOT. NO.	County
MP: 118.1		MILTON	247383P	
By:	Check By:	Drawn By:	Scale:	Date:
AE	RFO	AE	NTS	09-15-01

**NC-161**



DSCN3889

Looking East to North



DSCN3890

Looking East to South

**PB** PARSONS BRINCKERHOFF  
 QUADE and DOUGLAS, Inc.  
 199. 75 Arlington St., Boston, MA

Drawing Title  
**NEW ENGLAND CENTRAL RAILROAD**  
**KINGSBURY ST.**



Power Service Meter No.: \_\_\_\_\_  
 Type Roadway Material: \_\_\_\_\_  
 Railweight in Crossing: \_\_\_\_\_  
 Roundel Size: \_\_\_\_\_

Railroad Crossing		City/Town	U.S. DOT. NO.	County
MP: 118.1		MILTON	247383P	
By:	Check By:	Drawn By:	Scale:	Date:
AE	RFO	AE	NTS	09-15-01

**NC-161**



DSCN3891

Looking South to West



DSCN3892

Looking South to North

**PB** PARSONS BRINCKERHOFF  
 QUADE and DOUGLAS, Inc.  
 75 Arlington St., Boston, MA

Drawing Title  
**NEW ENGLAND CENTRAL RAILROAD**  
**KINGSBURY ST.**



Power Service Meter No.: \_\_\_\_\_  
 Type Roadway Material: \_\_\_\_\_  
 Railweight in Crossing: \_\_\_\_\_  
 Roundel Size: \_\_\_\_\_

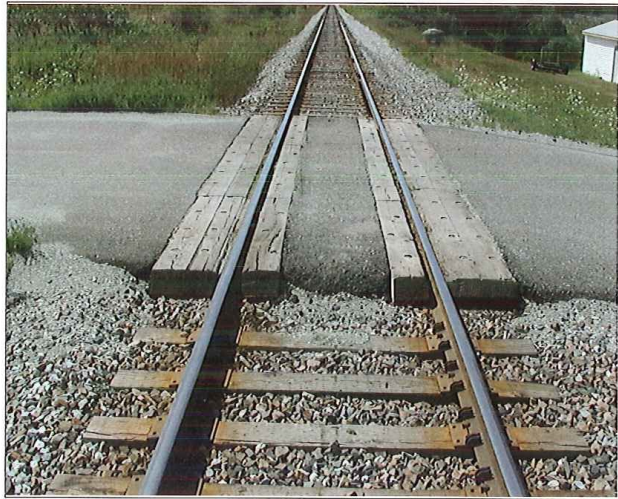
Railroad Crossing	City/Town	U.S. DOT. NO.	County
MP: 118.1	MILTON	247383P	
By: AE	Check By: RFO	Drawn By: AE	Scale: NTS
		Date:	09-15-01

**NC-161**



DSCN3893

Looking North to South



DSCN3894

Looking North to South

**PB** PARSONS BRINCKERHOFF  
 QUADE and DOUGLAS, Inc.  
 122, 75 Arlington St., Boston, MA

Drawing Title  
**NEW ENGLAND CENTRAL RAILROAD**  
**KINGSBURY ST.**



Power Service Meter No.: \_\_\_\_\_  
 Type Roadway Material: \_\_\_\_\_  
 Railweight in Crossing: \_\_\_\_\_  
 Roundel Size: \_\_\_\_\_



Railroad Crossing		City/Town	U.S. DOT. NO.	County
MP: 118.1		MILTON	247383P	
By:	Check By:	Drawn By:	Scale:	Date:
AE	RFO	AE	NTS	09-15-01

**NC-161**



DSCN3895

Northeast Quadrant

 <b>PARSONS BRINCKERHOFF</b> QUADE and DOUGLAS, Inc. 75 Arlington St., Boston, MA	<b>Drawing Title</b> NEW ENGLAND CENTRAL RAILROAD KINGSBURY ST.					
	<b>Railroad Crossing</b> MP: 118.1	<b>City/Town</b> MILTON	<b>U.S. DOT. NO.</b> 247383P	<b>County</b>		<b>NC-161</b>
	<b>By:</b> AE	<b>Check By:</b> RFO	<b>Drawn By:</b> AE	<b>Scale:</b> NTS		