



DSCN3862

Looking South to North



DSCN3863

Looking South to West

PB PARSONS BRINCKERHOFF
 QUADE and DOUGLAS, Inc.
 #29, 75 Arlington St., Boston, MA

Drawing Title
NEW ENGLAND CENTRAL RAILROAD
 MAYS TH-51



Power Service Meter No.: _____
 Type Roadway Material: _____
 Railweight in Crossing: _____
 Roundel Size: _____

Railroad Crossing		City/Town	U.S. DOT. NO.	County
MP: 116.9		MILTON	247328P	
By:	Check By:	Drawn By:	Scale:	Date:
AE	RFO	AE	NTS	09-15-01

NC-160



DSCN3864

Looking South to East



DSCN3865

Looking North to South

PARSONS BRINCKERHOFF
QUADE and DOUGLAS, Inc.
 199. 75 Arlington St., Boston, MA

Drawing Title
NEW ENGLAND CENTRAL RAILROAD
 MAYS TH-51



Power Service Meter No.: _____
 Type Roadway Material: _____
 Railweight in Crossing: _____
 Roundel Size: _____

Railroad Crossing		City/Town	U.S. DOT. NO.	County
MP: 116.9		MILTON	247328P	
By: AE	Check By: RFO	Drawn By: AE	Scale: NTS	Date: 09-15-01

NC-160





DSCN3866

Looking North to West



DSCN3867

Looking North to East

 PARSONS BRINCKERHOFF QUADE and DOUGLAS, Inc. 128, 75 Arlington St., Boston, MA	Drawing Title NEW ENGLAND CENTRAL RAILROAD MAYS TH-51				 NC-160
	Railroad Crossing MP: 116.9	City/Town MILTON	U.S. DOT. NO. 247328P	County	
Power Service Meter No.: _____ Type Roadway Material: _____ Railweight in Crossing: _____ Roundel Size: _____	By: AE	Check By: RFO	Drawn By: AE	Scale: NTS	Date: 09-15-01



DSCN3868

Looking West to East



DSCN3869

Looking West to South

PARSONS BRINCKERHOFF
QUADE and DOUGLAS, Inc.
 75 Arlington St., Boston, MA

Drawing Title
NEW ENGLAND CENTRAL RAILROAD
 MAYS TH-51



Power Service Meter No.: _____
 Type Roadway Material: _____
 Railweight in Crossing: _____
 Roundel Size: _____

Railroad Crossing		City/Town	U.S. DOT. NO.	County
MP: 116.9	MILTON	247328P		
By: AE	Check By: RFO	Drawn By: AE	Scale: NTS	Date: 09-15-01

NC-160



DSCN3870

Looking West to North



DSCN3871

Looking East to West

PB PARSONS BRINCKERHOFF
 QUADE and DOUGLAS, Inc.
 75 Arlington St., Boston, MA

Drawing Title
NEW ENGLAND CENTRAL RAILROAD
 MAYS TH-51



Power Service Meter No.: _____
 Type Roadway Material: _____
 Railweight In Crossing: _____
 Roundel Size: _____

Railroad Crossing		City/Town	U.S. DOT. NO.	County
MP: 116.9		MILTON	247328P	
By:	Check By:	Drawn By:	Scale:	Date:
AE	RFO	AE	NTS	09-15-01

NC-160



DSCN3872

Looking East to North



DSCN3873

Looking East to South

PB PARSONS BRINCKERHOFF
 QUADE and DOUGLAS, Inc.
 199, 75 Arlington St., Boston, MA

Drawing Title
NEW ENGLAND CENTRAL RAILROAD
 MAYS TH-51



Power Service Meter No.: _____
 Type Roadway Material: _____
 Railweight In Crossing: _____
 Roundel Size: _____

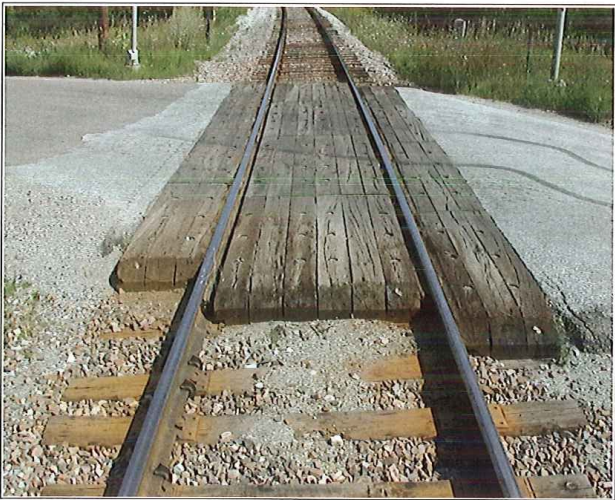
Railroad Crossing		City/Town	U.S. DOT. NO.	County
MP: 116.9		MILTON	247328P	
By:	Check By:	Drawn By:	Scale:	Date:
AE	RFO	AE	NTS	09-15-01

NC-160



DSCN3874

Looking South to North



DSCN3875

Looking South to North

PB PARSONS BRINCKERHOFF
 QUADE and DOUGLAS, Inc.
 75 Arlington St., Boston, MA

Drawing Title
NEW ENGLAND CENTRAL RAILROAD
 MAYS TH-51



Power Service Meter No.: _____
 Type Roadway Material: _____
 Railweight in Crossing: _____
 Roundel Size: _____

Railroad Crossing		City/Town	U.S. DOT. NO.	County
MP: 116.9		MILTON	247328P	
By:	Check By:	Drawn By:	Scale:	Date:
AE	RFO	AE	NTS	09-15-01

NC-160



DSCN3876

Looking North to South



DSCN3877

Looking North to South

PB PARSONS BRINCKERHOFF
 QUADE and DOUGLAS, Inc.
 188, 75 Arlington St., Boston, MA

Drawing Title
NEW ENGLAND CENTRAL RAILROAD
 MAYS TH-51



Power Service Meter No.: _____
 Type Roadway Material: _____
 Railweight in Crossing: _____
 Roundel Size: _____



Railroad Crossing		City/Town	U.S. DOT. NO.	County
MP: 116.9		MILTON	247328P	
By:	Check By:	Drawn By:	Scale:	Date:
AE	RFO	AE	NTS	09-15-01

NC-160



DSCN3878

Southwest Quadrant

 PARSONS BRINCKERHOFF QUADE and DOUGLAS, Inc. 100. 75 Arlington St., Boston, MA	Drawing Title NEW ENGLAND CENTRAL RAILROAD MAYS TH-51				
	Power Service Meter No.: _____ Type Roadway Material: _____ Railweight In Crossing: _____ Roundel Size: _____	Railroad Crossing MP: 116.9	City/Town MILTON	U.S. DOT. NO. 247328P	
	By: AE	Check By: RFO	Drawn By: AE	Scale: NTS	Date: 09-15-01
	NC-160				