



DSCN3828

Looking South to North



DSCN3829

Looking South to East

PB PARSONS BRINCKERHOFF
 QUADE and DOUGLAS, Inc.
 188. 75 Arlington St., Boston, MA

Drawing Title
NEW ENGLAND CENTRAL RAILROAD
 EAST RD.



Power Service Meter No.: _____
 Type Roadway Material: _____
 Railweight in Crossing: _____
 Roundel Size: _____

Railroad Crossing		City/Town	U.S. DOT. NO.	County
MP: 114.4		COLCHESTER	247324M	
By: AE	Check By: RFO	Drawn By: AE	Scale: NTS	Date: 09-15-01

NC-158



DSCN3830

Looking South to West



DSCN3831

Looking North to South

PB PARSONS BRINCKERHOFF
 QUADE and DOUGLAS, Inc.
 199. 75 Arlington St., Boston, MA

Drawing Title
NEW ENGLAND CENTRAL RAILROAD
 EAST RD.



Power Service Meter No.: _____
 Type Roadway Material: _____
 Railweight In Crossing: _____
 Roundel Size: _____

Railroad Crossing		City/Town	U.S. DOT. NO.	County
MP: 114.4		COLCHESTER	247324M	
By:	Check By:	Drawn By:	Scale:	Date:
AE	RFO	AE	NTS	09-15-01

NC-158



DSCN3832

Looking North to West



DSCN3833

Looking North to East

PB PARSONS BRINCKERHOFF
 QUADE and DOUGLAS, Inc.
 75 Arlington St., Boston, MA

Drawing Title
NEW ENGLAND CENTRAL RAILROAD
 EAST RD.



Power Service Meter No.: _____
 Type Roadway Material: _____
 Railweight In Crossing: _____
 Roundel Size: _____

Railroad Crossing		City/Town	U.S. DOT. NO.	County
MP: 114.4		COLCHESTER	247324M	
By:	Check By:	Drawn By:	Scale:	Date:
AE	RFO	AE	NTS	09-15-01

NC-158



DSCN3834

Looking West to East



DSCN3835

Looking West to South

PB PARSONS BRINCKERHOFF
 QUADE and DOUGLAS, Inc.
 #22. 75 Arlington St., Boston, MA

Drawing Title
NEW ENGLAND CENTRAL RAILROAD
 EAST RD.



Power Service Meter No.: _____
 Type Roadway Material: _____
 Railweight in Crossing: _____
 Roundel Size: _____

Railroad Crossing		City/Town	U.S. DOT. NO.	County
MP: 114.4		COLCHESTER	247324M	
By:	Check By:	Drawn By:	Scale:	Date:
AE	RFO	AE	NTS	09-15-01

NC-158



DSCN3836

Looking West to North



DSCN3837

Looking East to West

PB PARSONS BRINCKERHOFF
 QUADE and DOUGLAS, Inc.
 100. 75 Arlington St., Boston, MA

Drawing Title
NEW ENGLAND CENTRAL RAILROAD
 EAST RD.



Power Service Meter No.: _____
 Type Roadway Material: _____
 Railweight in Crossing: _____
 Roundel Size: _____

Railroad Crossing		City/Town	U.S. DOT. NO.	County
MP: 114.4		COLCHESTER	247324M	
By:	Check By:	Drawn By:	Scale:	Date:
AE	RFO	AE	NTS	09-15-01

NC-158



DSCN3838

Looking East to North



DSCN3839

Looking East to South

PB PARSONS BRINCKERHOFF
 QUADE and DOUGLAS, Inc.
 75 Arlington St., Boston, MA

Drawing Title
NEW ENGLAND CENTRAL RAILROAD
 EAST RD.



Power Service Meter No.: _____
 Type Roadway Material: _____
 Railweight in Crossing: _____
 Roundel Size: _____

Railroad Crossing		City/Town	U.S. DOT. NO.	County
MP: 114.4		COLCHESTER	247324M	
By:	Check By:	Drawn By:	Scale:	Date:
AE	RFO	AE	NTS	09-15-01

NC-158



DSCN3840

Looking South to North



DSCN3841

Looking South to North

PB PARSONS BRINCKERHOFF
 QUADE and DOUGLAS, Inc.
 199, 75 Arlington St., Boston, MA

Drawing Title
NEW ENGLAND CENTRAL RAILROAD
 EAST RD.



Power Service Meter No.: _____
 Type Roadway Material: _____
 Railweight in Crossing: _____
 Roundel Size: _____

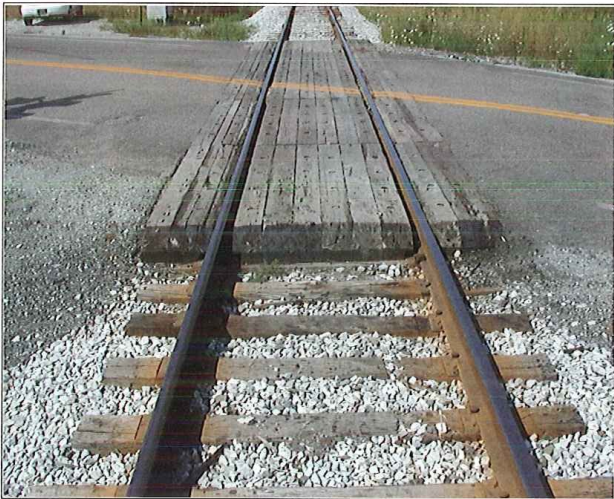
Railroad Crossing		City/Town	U.S. DOT. NO.	County
MP: 114.4		COLCHESTER	247324M	
By:	Check By:	Drawn By:	Scale:	Date:
AE	RFO	AE	NTS	09-15-01

NC-158





DSCN3842

Looking North to South



DSCN3843

Looking North to South

 PARSONS BRINCKERHOFF QUADE and DOUGLAS, Inc. 75 Arlington St., Boston, MA	Drawing Title NEW ENGLAND CENTRAL RAILROAD EAST RD.				 NC-158
	Power Service Meter No.: _____ Type Roadway Material: _____ Railweight in Crossing: _____ Roundel Size: _____	Railroad Crossing MP: 114.4	City/Town COLCHESTER	U.S. DOT. NO. 247324M	
	By: AE	Check By: RFO	Drawn By: AE	Scale: NTS	Date: 09-15-01