



DSCN3792

Looking South to North



DSCN3793

Looking South to East

**PB** PARSONS BRINCKERHOFF  
 QUADE and DOUGLAS, Inc.  
 192, 75 Arlington St., Boston, MA

Drawing Title

**NEW ENGLAND CENTRAL RAILROAD  
 DEPOT ST**



Power Service Meter No.: \_\_\_\_\_  
 Type Roadway Material: \_\_\_\_\_  
 Railweight in Crossing: \_\_\_\_\_  
 Roundel Size: \_\_\_\_\_

Railroad Crossing		City/Town	U.S. DOT. NO.	County
MP: 112		COLCHESTER	247320K	
By:	Check By:	Drawn By:	Scale:	Date:
AE	RFO	AE	NTS	09-15-01

**NC-156**





DSCN3794

Looking South to West



DSCN3795

Looking North to South

 <b>PARSONS BRINCKERHOFF</b> QUADE and DOUGLAS, Inc. 75 Arlington St., Boston, MA	Drawing Title <b>NEW ENGLAND CENTRAL RAILROAD</b> DEPOT ST				
	Power Service Meter No.: _____ Type Roadway Material: _____ Railroad Crossing: _____ Roundel Size: _____	Railroad Crossing MP: 112	City/Town COLCHESTER	U.S. DOT. NO. 247320K	
	By: AE	Check By: RFO	Drawn By: AE	Scale: NTS	Date: 09-15-01
					<b>NC-156</b>



DSCN3796

Looking North to West



DSCN3797

Looking North to East

**PB** PARSONS BRINCKERHOFF  
 QUADE and DOUGLAS, Inc.  
 199, 75 Arlington St., Boston, MA

Drawing Title  
**NEW ENGLAND CENTRAL RAILROAD**  
 DEPOT ST



Power Service Meter No.: \_\_\_\_\_  
 Type Roadway Material: \_\_\_\_\_  
 Railweight in Crossing: \_\_\_\_\_  
 Roundel Size: \_\_\_\_\_

Railroad Crossing		City/Town	U.S. DOT. NO.	County
MP:	112	COLCHESTER	247320K	
By:	Check By:	Drawn By:	Scale:	Date:
AE	RFO	AE	NTS	09-15-01

**NC-156**



DSCN3798

Looking West to East



DSCN3799

Looking West to North

**PB** PARSONS BRINCKERHOFF  
 QUADE and DOUGLAS, Inc.  
 199, 75 Arlington St., Boston, MA

Drawing Title  
**NEW ENGLAND CENTRAL RAILROAD**  
 DEPOT ST



Power Service Meter No.: \_\_\_\_\_  
 Type Roadway Material: \_\_\_\_\_  
 Railweight in Crossing: \_\_\_\_\_  
 Roundel Size: \_\_\_\_\_

Railroad Crossing	MP: 112	City/Town	U.S. DOT. NO.	County
		COLCHESTER	247320K	
By: AE	Check By: RFO	Drawn By: AE	Scale: NTS	Date: 09-15-01

**NC-156**



DSCN3800

Looking West to South



DSCN3801

Looking East to West

**PB** PARSONS BRINCKERHOFF  
 QUADE and DOUGLAS, Inc.  
 122, 75 Arlington St., Boston, MA

Drawing Title  
**NEW ENGLAND CENTRAL RAILROAD**  
 DEPOT ST



Power Service Meter No.: \_\_\_\_\_  
 Type Roadway Material: \_\_\_\_\_  
 Railweight In Crossing: \_\_\_\_\_  
 Roundel Size: \_\_\_\_\_

Railroad Crossing		City/Town	U.S. DOT. NO.	County
MP: 112		COLCHESTER	247320K	
By: AE	Check By: RFO	Drawn By: AE	Scale: NTS	Date: 09-15-01

**NC-156**



DSCN3802

Looking East to North



DSCN3803

Looking East to South

**PB** PARSONS BRINCKERHOFF  
 QUADE and DOUGLAS, Inc.  
 75 Arlington St., Boston, MA

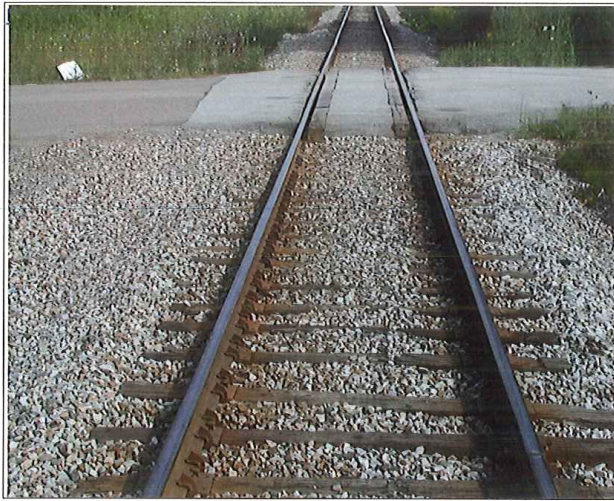
Drawing Title  
**NEW ENGLAND CENTRAL RAILROAD**  
 DEPOT ST



Power Service Meter No.: \_\_\_\_\_  
 Type Roadway Material: \_\_\_\_\_  
 Railwright In Crossing: \_\_\_\_\_  
 Roundel Size: \_\_\_\_\_

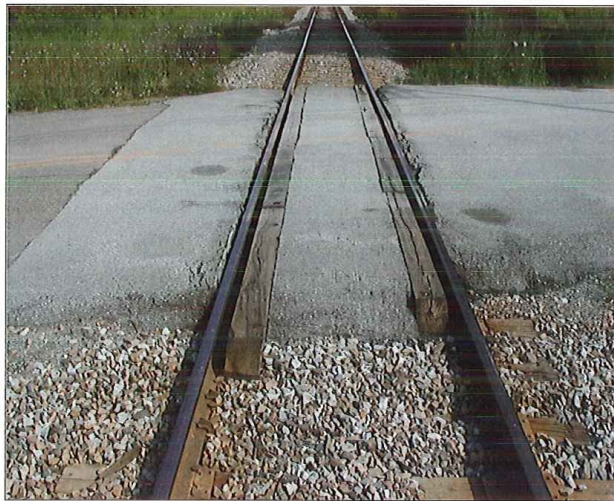
Railroad Crossing		City/Town	U.S. DOT. NO.	County
MP: 112		COLCHESTER	247320K	
By: AE	Check By: RFO	Drawn By: AE	Scale: NTS	Date: 09-15-01

**NC-156**



DSCN3804

Looking North to South



DSCN3805

Looking North to South

**PB** PARSONS BRINCKERHOFF  
 QUADE and DOUGLAS, Inc.  
 100, 75 Arlington St., Boston, MA

Drawing Title  
**NEW ENGLAND CENTRAL RAILROAD**  
 DEPOT ST



Power Service Meter No.: \_\_\_\_\_  
 Type Roadway Material: \_\_\_\_\_  
 Railweight in Crossing: \_\_\_\_\_  
 Roundel Size: \_\_\_\_\_

Railroad Crossing		City/Town	U.S. DOT. NO.	County
MP: 112		COLCHESTER	247320K	
By:	Check By:	Drawn By:	Scale:	Date:
AE	RFO	AE	NTS	09-15-01

**NC-156**



DSCN3806

Looking South to North



DSCN3807

Looking South to North

**PB** PARSONS BRINCKERHOFF  
 QUADE and DOUGLAS, Inc.  
 788, 75 Arlington St., Boston, MA

Drawing Title  
**NEW ENGLAND CENTRAL RAILROAD**  
 DEPOT ST



Power Service Meter No.: \_\_\_\_\_  
 Type Roadway Material: \_\_\_\_\_  
 Railwright in Crossing: \_\_\_\_\_  
 Roundel Size: \_\_\_\_\_



Railroad Crossing		City/Town	U.S. DOT. NO.	County
MP: 112		COLCHESTER	247320K	
By: AE	Check By: RFO	Drawn By: AE	Scale: NTS	Date: 09-15-01

**NC-156**



DSCN3808

Southwest Quadrant

 <b>PARSONS BRINCKERHOFF</b> QUADE and DOUGLAS, Inc. 75 Arlington St., Boston, MA	Drawing Title <b>NEW ENGLAND CENTRAL RAILROAD</b> DEPOT ST				
	Power Service Meter No.: _____ Type Roadway Material: _____ Railweight in Crossing: _____ Roundel Size: _____	Railroad Crossing MP: 112	City/Town COLCHESTER	U.S. DOT. NO. 247320K	
	By: AE	Check By: RFO	Drawn By: AE	Scale: NTS	Date: 09-15-01
	<b>NC-156</b>				