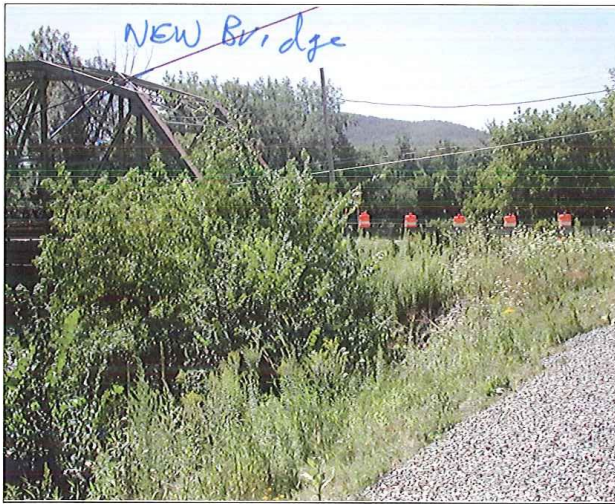




DSCN3610

Looking South to North



DSCN3611

Looking South to West

**PB** PARSONS BRINCKERHOFF  
 QUADE and DOUGLAS, Inc.  
 75 Arlington St., Boston, MA

Drawing Title  
**NEW ENGLAND CENTRAL RAILROAD**  
**COCHRAN RD**



Power Service Meter No.: \_\_\_\_\_  
 Type Roadway Material: \_\_\_\_\_  
 Railweight in Crossing: \_\_\_\_\_  
 Roundel Size: \_\_\_\_\_

Railroad Crossing	City/Town	U.S. DOT. NO.	County
MP: 95.87	RICHMOND	247319R	
By: AE	Check By: RFO	Drawn By: AE	Scale: NTS
		Date:	09-15-01

**NC-148**



DSCN3612

Looking South to East



DSCN3613

Looking South to West

**PB** PARSONS BRINCKERHOFF  
 QUADE and DOUGLAS, Inc.  
 188, 75 Arlington St., Boston, MA

Power Service Meter No.: \_\_\_\_\_  
 Type Roadway Material: \_\_\_\_\_  
 Railweight in Crossing: \_\_\_\_\_  
 Roundel Size: \_\_\_\_\_

Drawing Title  
**NEW ENGLAND CENTRAL RAILROAD**  
**COCHRAN RD**



Railroad Crossing		City/Town	U.S. DOT. NO.	County
MP: 95.87		RICHMOND	247319R	
By:	Check By:	Drawn By:	Scale:	Date:
AE	RFO	AE	NTS	09-15-01

**NC-148**



DSCN3614

Northeast Quadrant



DSCN3615

Looking North to South

**PB** PARSONS BRINCKERHOFF  
 QUADE and DOUGLAS, Inc.  
 75 Arlington St., Boston, MA

Drawing Title  
**NEW ENGLAND CENTRAL RAILROAD**  
**COCHRAN RD**



Power Service Meter No.: \_\_\_\_\_  
 Type Roadway Material: \_\_\_\_\_  
 Railweight in Crossing: \_\_\_\_\_  
 Roundel Size: \_\_\_\_\_

Railroad Crossing		City/Town	U.S. DOT. NO.	County
MP: 95.87		RICHMOND	247319R	
By:	Check By:	Drawn By:	Scale:	Date:
AE	RFO	AE	NTS	09-15-01

**NC-148**



DSCN3616

Looking North to West



DSCN3617

Looking North to East

**PR** PARSONS BRINCKERHOFF  
 QUADE and DOUGLAS, Inc.  
 100 75 Arlington St., Boston, MA

Drawing Title  
**NEW ENGLAND CENTRAL RAILROAD**  
**COCHRAN RD**



Power Service Meter No.: \_\_\_\_\_  
 Type Roadway Material: \_\_\_\_\_  
 Railweight in Crossing: \_\_\_\_\_  
 Roundel Size: \_\_\_\_\_

Railroad Crossing		City/Town	U.S. DOT. NO.	County
MP:	95.87	RICHMOND	247319R	
By:	Check By:	Drawn By:	Scale:	Date:
AE	RFO	AE	NTS	09-15-01

**NC-148**



DSCN3618

Looking West to East



DSCN3619

Looking West to East

**PB** PARSONS BRINCKERHOFF  
 QUADE and DOUGLAS, Inc.  
 75 Arlington St., Boston, MA

Power Service Meter No.: \_\_\_\_\_  
 Type Roadway Material: \_\_\_\_\_  
 Railweight in Crossing: \_\_\_\_\_  
 Roundel Size: \_\_\_\_\_

Drawing Title  
**NEW ENGLAND CENTRAL RAILROAD**  
 COCHRAN RD

Railroad Crossing		City/Town	U.S. DOT. NO.	County
MP:	95.87	RICHMOND	247319R	
By:	Check By:	Drawn By:	Scale:	Date:
AE	RFO	AE	NTS	09-15-01



**NC-148**



DSCN3620

Looking East to west



DSCN3621

Looking East to west

**PB** PARSONS BRINCKERHOFF  
 QUADE and DOUGLAS, Inc.  
 122A, 75 Arlington St., Boston, MA

Drawing Title				
<b>NEW ENGLAND CENTRAL RAILROAD</b>				
<b>COCHRAN RD</b>				
Railroad Crossing	City/Town	U.S. DOT. NO.	County	
MP: 95.87	RICHMOND	247319R		
By:	Check By:	Drawn By:	Scale:	Date:
AE	RFO	AE	NTS	09-15-01



**NC-148**

Power Service Meter No.: \_\_\_\_\_  
 Type Roadway Material: \_\_\_\_\_  
 Railweight in Crossing: \_\_\_\_\_  
 Roundel Size: \_\_\_\_\_





DSCN3622

Looking East to North



DSCN3623

Looking East to South

 <b>PARSONS BRINCKERHOFF</b> QUADE and DOUGLAS, Inc. 189, 75 Arlington St., Boston, MA	Drawing Title <b>NEW ENGLAND CENTRAL RAILROAD</b> <b>COCHRAN RD</b>				
	Power Service Meter No.: _____ Type Roadway Material: _____ Railweight in Crossing: _____ Roundel Size: _____	Railroad Crossing MP: 95.87 City/Town RICHMOND	U.S. DOT. NO. 247319R	County	
By: AE	Check By: RFO	Drawn By: AE	Scale: NTS	Date: 09-15-01	