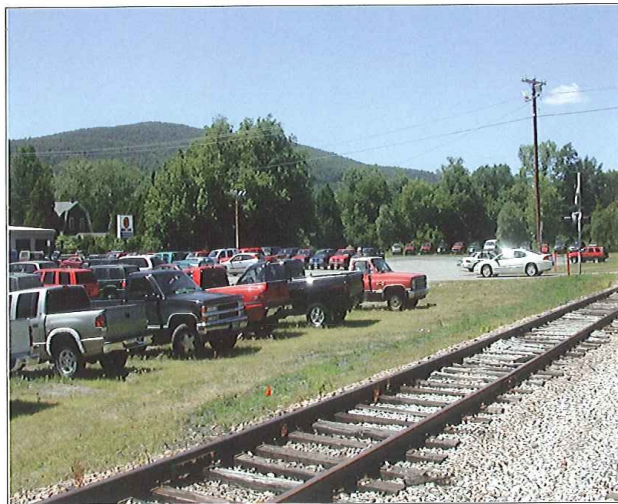




DSCN3535

Looking South to North



DSCN3536

Looking South to West

PB PARSONS BRINCKERHOFF
 QUADE and DOUGLAS, Inc.
 75 Arlington St., Boston, MA

Power Service Meter No.: _____
 Type Roadway Material: _____
 Railwight in Crossing: _____
 Roundel Size: _____

Drawing Title
NEW ENGLAND CENTRAL RAILROAD
DERMITT PLACE



| | | | | |
|-------------------|-----------|-----------|---------------|----------|
| Railroad Crossing | | City/Town | U.S. DOT. NO. | County |
| MP: 85.54 | | WATERBURY | 247299G | |
| By: | Check By: | Drawn By: | Scale: | Date: |
| AE | RFO | AE | NTS | 09-15-01 |

NC-144



DSCN3538

Looking South to East



DSCN3539

Looking South to North

PB PARSONS BRINCKERHOFF
 QUADE and DOUGLAS, Inc.
 188. 75 Arlington St., Boston, MA

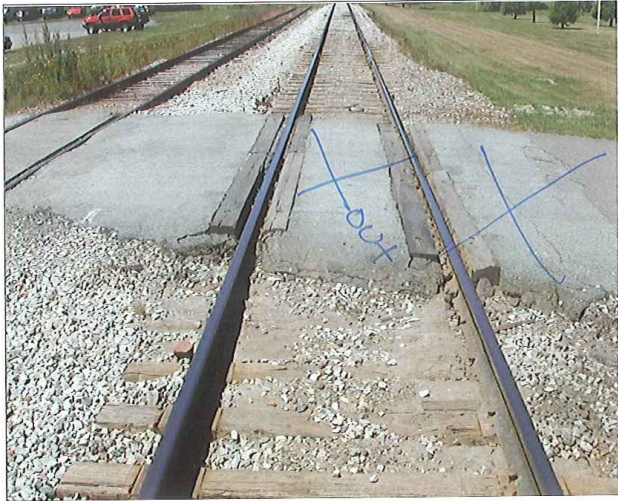
Drawing Title
NEW ENGLAND CENTRAL RAILROAD
DERMITT PLACE



Power Service Meter No.: _____
 Type Roadway Material: _____
 Railweight in Crossing: _____
 Roundel Size: _____

| | | | | |
|-------------------|-----------|-----------|---------------|----------|
| Railroad Crossing | | City/Town | U.S. DOT. NO. | County |
| MP: | 85.54 | WATERBURY | 247299G | |
| By: | Check By: | Drawn By: | Scale: | Date: |
| AE | RFO | AE | NTS | 09-15-01 |

NC-144



DSCN3540

Looking South to North, Mainline



DSCN3541

Looking South to North, Sidetrack

PB PARSONS BRINCKERHOFF
 QUADE and DOUGLAS, Inc.
 129. 75 Arlington St., Boston, MA

Power Service Meter No.: _____
 Type Roadway Material: _____
 Railweight in Crossing: _____
 Roundel Size: _____

Drawing Title
NEW ENGLAND CENTRAL RAILROAD
 DERMITT PLACE



| | | | | |
|-------------------|-----------|-----------|---------------|----------|
| Railroad Crossing | | City/Town | U.S. DOT. NO. | County |
| MP: 85.54 | | WATERBURY | 247299G | |
| By: | Check By: | Drawn By: | Scale: | Date: |
| AE | RFO | AE | NTS | 09-15-01 |

NC-144





DSCN3542

Looking North to South



DSCN3543

Looking North to South

| | | | | | |
|---|--|------------------------|--------------------------|------------|---|
|  PARSONS BRINCKERHOFF QUADE and DOUGLAS, Inc. 189, 75 Arlington St., Boston, MA | Drawing Title NEW ENGLAND CENTRAL RAILROAD DERMITT PLACE | | | |  |
| | Railroad Crossing MP: 85.54 | City/Town WATERBURY | U.S. DOT. NO. 247299G | County | |
| Power Service Meter No.: _____ Type Roadway Material: _____ Railweight in Crossing: _____ Roundel Size: _____ | By: AE | Check By: RFO | Drawn By: AE | Scale: NTS | Date: 09-15-01 |



DSCN3544

Looking North to West



DSCN3545

Looking North to East

PB PARSONS BRINCKERHOFF
 QUADE and DOUGLAS, Inc.
 199, 75 Arlington St., Boston, MA

Drawing Title
NEW ENGLAND CENTRAL RAILROAD
 DERMITT PLACE



Power Service Meter No.: _____
 Type Roadway Material: _____
 Railweight in Crossing: _____
 Roundel Size: _____

| | | | | |
|-------------------|-----------|-----------|---------------|----------|
| Railroad Crossing | | City/Town | U.S. DOT. NO. | County |
| MP: 85.54 | | WATERBURY | 247299G | |
| By: | Check By: | Drawn By: | Scale: | Date: |
| AE | RFO | AE | NTS | 09-15-01 |

NC-144



DSCN3546

Southeast Quadrant



DSCN3547

Looking West to East

PB PARSONS BRINCKERHOFF
 QUADE and DOUGLAS, Inc.
 188, 75 Arlington St., Boston, MA

Drawing Title
NEW ENGLAND CENTRAL RAILROAD
 DERMITT PLACE



Power Service Meter No.: _____
 Type Roadway Material: _____
 Railweight in Crossing: _____
 Roundel Size: _____

| | | | | |
|-------------------|-----------|-----------|---------------|----------|
| Railroad Crossing | | City/Town | U.S. DOT. NO. | County |
| MP: 85.54 | | WATERBURY | 247299G | |
| By: | Check By: | Drawn By: | Scale: | Date: |
| AE | RFO | AE | NTS | 09-15-01 |

NC-144



DSCN3548

Looking West to South



DSCN3549

Looking West to North

PB PARSONS BRINCKERHOFF
 QUADE and DOUGLAS, Inc.
 75 Arlington St., Boston, MA

Drawing Title
NEW ENGLAND CENTRAL RAILROAD
 DERRITT PLACE



Power Service Meter No.: _____
 Type Roadway Material: _____
 Railweight in Crossing: _____
 Roundel Size: _____

| | | | |
|-------------------|---------------|---------------|----------------|
| Railroad Crossing | City/Town | U.S. DOT. NO. | County |
| MP: 85.54 | WATERBURY | 247299G | |
| By: AE | Check By: RFO | Drawn By: AE | Scale: NTS |
| | | | Date: 09-15-01 |

NC-144



DSCN3550

Looking East to west



DSCN3551

Looking East to South

PB PARSONS BRINCKERHOFF
 QUADE and DOUGLAS, Inc.
 75 Arlington St., Boston, MA

Drawing Title
NEW ENGLAND CENTRAL RAILROAD
DERMITT PLACE



Power Service Meter No.: _____
 Type Roadway Material: _____
 Railwright in Crossing: _____
 Roundel Size: _____



| | | | | |
|-------------------|-----------|-----------|---------------|----------|
| Railroad Crossing | | City/Town | U.S. DOT. NO. | County |
| MP: 85.54 | | WATERBURY | 247299G | |
| By: | Check By: | Drawn By: | Scale: | Date: |
| AE | RFO | AE | NTS | 09-15-01 |

NC-144



DSCN3552

Looking East to North

| | | | | | |
|--|--|------------------------|--------------------------|---------------|---|
|  PARSONS BRINCKERHOFF QUADE and DOUGLAS, Inc. 129. 75 Arlington St., Boston, MA | Drawing Title NEW ENGLAND CENTRAL RAILROAD DERMITT PLACE | | | |  |
| | Railroad Crossing MP: 85.54 | City/Town WATERBURY | U.S. DOT. NO. 247299G | County | |
| Power Service Meter No.: _____ Type Roadway Material: _____ Railwiegth in Crossing: _____ Roundel Size: _____ | By: AE | Check By: RFO | Drawn By: AE | Scale: NTS | Date: 09-15-01 |