



DSCN4233

Looking South to North



DSCN4234

Looking South to West

PB PARSONS BRINCKERHOFF
 QUADE and DOUGLAS, Inc.
 122, 75 Arlington St., Boston, MA

Drawing Title
NEW ENGLAND CENTRAL RAILROAD
 ALBURG RD (RTE 78)



Power Service Meter No.: _____
 Type Roadway Material: _____
 Railweight In Crossing: _____
 Roundel Size: _____

Railroad Crossing		City/Town	U.S. DOT. NO.	County
MP: 15.77	ALBURG	171040T		
By: AE	Check By: RFO	Drawn By: AE	Scale: NTS	Date: 09-15-01

CN-101



DSCN4235

Looking South to East



DSCN4236

Looking North to South

PB PARSONS BRINCKERHOFF
 QUADE and DOUGLAS, Inc.
 75 Arlington St., Boston, MA

Drawing Title
NEW ENGLAND CENTRAL RAILROAD
 ALBURG RD (RTE 78)



Power Service Meter No.:
 Type Roadway Material: *Gravel Timber*
 Railweight In Crossing: *115*
 Roundel Size: *X*

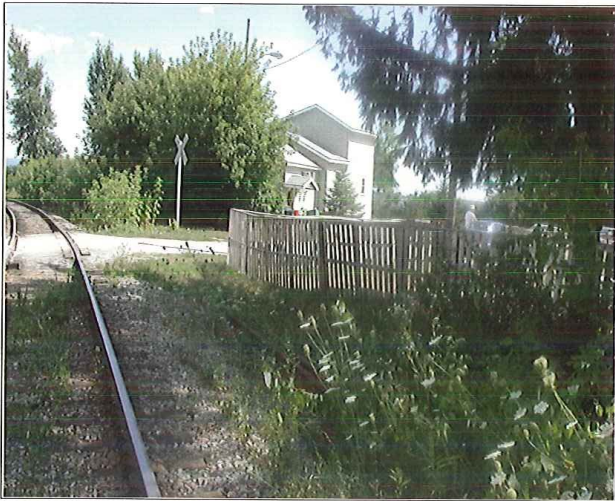
Railroad Crossing		City/Town	U.S. DOT. NO.	County
MP:	15.77	ALBURG	171040T	
By:	Check By:	Drawn By:	Scale:	Date:
AE	RFO	AE	NTS	09-15-01

CN-101



DSCN4237

Looking North to East



DSCN4238

Looking North to West

PB PARSONS BRINCKERHOFF
 QUADE and DOUGLAS, Inc.
 75 Arlington St., Boston, MA

Drawing Title
NEW ENGLAND CENTRAL RAILROAD
 ALBURG RD (RTE 78)



Power Service Meter No.: _____
 Type Roadway Material: _____
 Railweight in Crossing: _____
 Roundel Size: _____

Railroad Crossing		City/Town	U.S. DOT. NO.	County
MP: 15.77		ALBURG	171040T	
By:	Check By:	Drawn By:	Scale:	Date:
AE	RFO	AE	NTS	09-15-01

CN-101



DSCN4239

Looking East to West



DSCN4240

Looking East to South

PARSONS BRINCKERHOFF
QUADE and DOUGLAS, Inc.
 122, 75 Arlington St., Boston, MA

Drawing Title
NEW ENGLAND CENTRAL RAILROAD
 ALBURG RD (RTE 78)



Power Service Meter No.: _____
 Type Roadway Material: _____
 Railweight in Crossing: _____
 Roundel Size: _____

Railroad Crossing		City/Town	U.S. DOT. NO.	County
MP:	15.77	ALBURG	171040T	
By:	Check By:	Drawn By:	Scale:	Date:
AE	RFO	AE	NTS	09-15-01

CN-101



DSCN4241

Looking East to North



DSCN4242

Looking West to East

PARSONS BRINCKERHOFF
QUADE and DOUGLAS, Inc.
 122, 75 Arlington St., Boston, MA

Drawing Title
NEW ENGLAND CENTRAL RAILROAD
 ALBURG RD (RTE 78)



Power Service Meter No.: _____
 Type Roadway Material: _____
 Railweight in Crossing: _____
 Roundel Size: _____

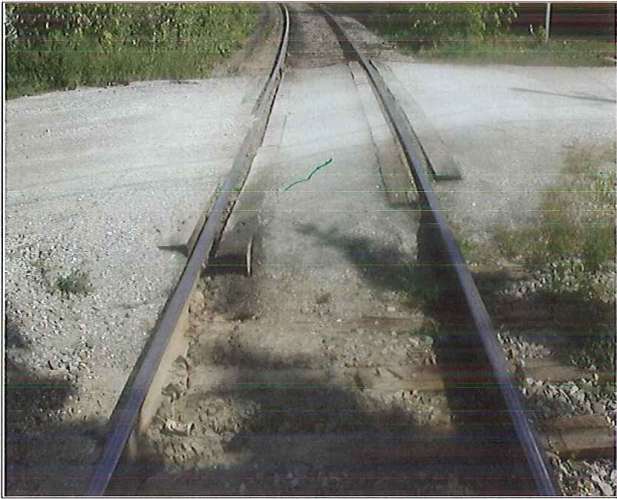
Railroad Crossing		City/Town	U.S. DOT. NO.	County
MP:	15.77	ALBURG	171040T	
By:	Check By:	Drawn By:	Scale:	Date:
AE	RFO	AE	NTS	09-15-01

CN-101



DSCN4243

Looking South to North



DSCN4246

Looking North to South

PARSONS BRINCKERHOFF
QUADE and DOUGLAS, Inc.
 129. 75 Arlington St., Boston, MA

Drawing Title
NEW ENGLAND CENTRAL RAILROAD
 ALBURG RD (RTE 78)



Power Service Meter No.: _____
 Type Roadway Material: _____
 Railweight in Crossing: _____
 Roundel Size: _____

Railroad Crossing		City/Town	U.S. DOT. NO.	County
MP:	15.77	ALBURG	171040T	
By:	Check By:	Drawn By:	Scale:	Date:
AE	RFO	AE	NTS	09-15-01

CN-101



DSCN4245

Looking South to North



DSCN4246

Looking North to South

PARSONS BRINCKERHOFF
QUADE and DOUGLAS, Inc.
 129. 75 Arlington St., Boston, MA

Drawing Title
NEW ENGLAND CENTRAL RAILROAD
 ALBURG RD (RTE 78)



Power Service Meter No.: _____
 Type Roadway Material: _____
 Railweight in Crossing: _____
 Roundel Size: _____



Railroad Crossing		City/Town	U.S. DOT. NO.	County
MP:	15.77	ALBURG	171040T	
By:	Check By:	Drawn By:	Scale:	Date:
AE	RFO	AE	NTS	09-15-01

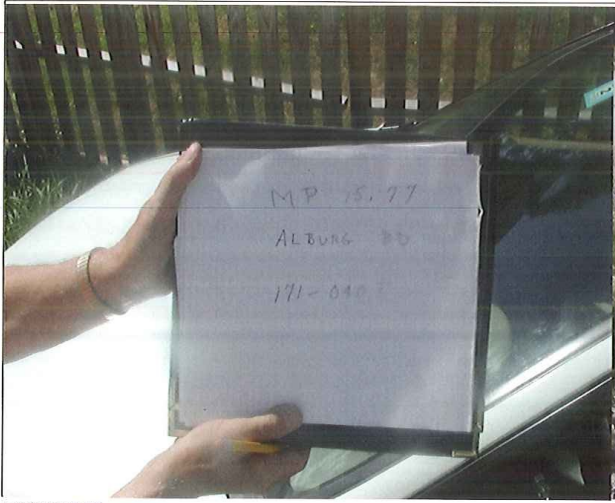
CN-101



DSCN4247



Crossing 171-040F

 PARSONS BRINCKERHOFF QUADE and DOUGLAS, Inc. 122, 75 Arlington St., Boston, MA	Drawing Title NEW ENGLAND CENTRAL RAILROAD ALBURG RD (RTE 78)				
	Power Service Meter No.: _____ Type Roadway Material: _____ Railweight In Crossing: _____ Roundel Size: _____	Railroad Crossing MP: 15.77	City/Town ALBURG	U.S. DOT. NO. 171040T	
	By: AE	Check By: RFO	Drawn By: AE	Scale: NTS	Date: 09-15-01
					CN-101



DSCN4247

Crossing 171-040F

 PARSONS BRINCKERHOFF QUADE and DOUGLAS, Inc. 122. 75 Arlington St., Boston, MA	Drawing Title NEW ENGLAND CENTRAL RAILROAD ALBURG RD (RTE 78)					
	Railroad Crossing MP: 15.77		City/Town ALBURG	U.S. DOT. NO. 171040T		County
	By: AE	Check By: RFO	Drawn By: AE	Scale: NTS		Date: 09-15-01
Power Service Meter No.: _____ Type Roadway Material: _____ Railweight in Crossing: _____ Roundel Size: _____	CN-101					