





DSCN0947

LOOKING FROM SOUTH TO NORTH



DSCN0948

LOOKING FROM SOUTH TO EAST

 PARSONS, BRINCKERHOFF, QUADE & DOUGLAS, INC. 75 Arlington St., Boston, MA	Drawing Title NORTHERN VERMONT RAILROAD BRADFORD SUBDIVISION MALLORY'S CROSSING				
	Power Service Meter No.: _____ Type Roadway Material: _____ Railweight in Crossing: _____ Roundel Size: _____	Railroad Crossing MP: 15.43	City/Town FAIRLEE	U.S. DOT. NO. 053-576A	
	By: RO	Check By:	Drawn By: MYM	Scale: NTS	Date: 4-15-01
					NV-19-01





DSCN0949

LOOKING FROM SOUTH TO WEST



DSCN0950

LOOKING FROM SOUTH TO NORTH

 PARSONS, BRINCKERHOFF, QUADE & DOUGLAS, INC. 75 Arlington St., Boston, MA	Drawing Title NORTHERN VERMONT RAILROAD BRADFORD SUBDIVISION MALLORY'S CROSSING				
	Power Service Meter No.: _____ Type Roadway Material: _____ Railweight in Crossing: _____ Roundel Size: _____	Railroad Crossing MP: 15.43	City/Town FAIRLEE	U.S. DOT. NO. 053-576A	
	By: RO	Check By:	Drawn By: MYM	Scale: NTS	Date: 4-15-01





DSCN0951

LOOKING FROM NORTH TO SOUTH



DSCN0952

LOOKING FROM NORTH TO EAST

 PARSONS, BRINCKERHOFF, QUADE & DOUGLAS, INC. 75 Arlington St., Boston, MA	Drawing Title NORTHERN VERMONT RAILROAD BRADFORD SUBDIVISION MALLORY'S CROSSING				
	Power Service Meter No.: _____ Type Roadway Material: _____ Railweight in Crossing: _____ Roundel Size: _____	Railroad Crossing MP: 15.43	City/Town FAIRLEE	U.S. DOT. NO. 053-576A	
	By: RO	Check By: _____	Drawn By: MYM	Scale: NTS	Date: 4-15-01





DSCN0953

LOOKING FROM NORTH TO WEST



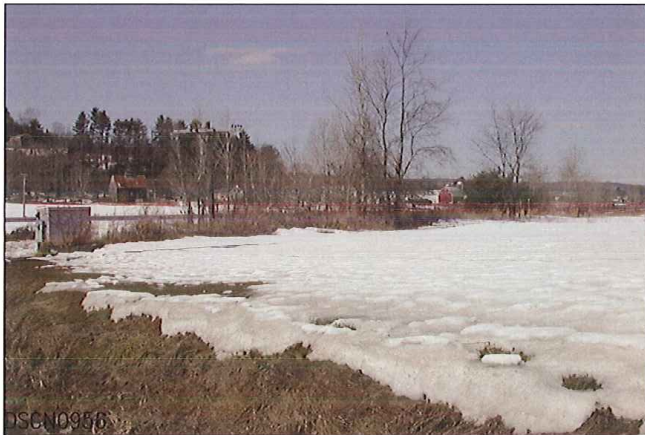
DSCN0954

LOOKING FROM EAST TO WEST



 PARSONS, BRINCKERHOFF, QUADE & DOUGLAS, INC. 75 Arlington St., Boston, MA	Drawing Title NORTHERN VERMONT RAILROAD BRADFORD SUBDIVISION MALLORY'S CROSSING				
	Power Service Meter No.: _____ Type Roadway Material: _____ Railweight in Crossing: _____ Roundel Size: _____	Railroad Crossing MP: 15.43	City/Town FAIRLEE	U.S. DOT. NO. 053-576A	
	By: RO	Check By:	Drawn By: MYM	Scale: NTS	Date: 4-15-01
	NV-19-04				



LOOKING FROM EAST TO SOUTH



LOOKING FROM EAST TO SOUTH

 PARSONS, BRINCKERHOFF, QUADE & DOUGLAS, INC. 75 Arlington St., Boston, MA	Drawing Title NORTHERN VERMONT RAILROAD BRADFORD SUBDIVISION MALLORY'S CROSSING				
	Power Service Meter No.: _____ Type Roadway Material: _____ Railweight in Crossing: _____ Roundel Size: _____	Railroad Crossing MP: 15.43	City/Town FAIRLEE	U.S. DOT. NO. 053-576A	
	By: RO	Check By: _____	Drawn By: MYM	Scale: NTS	Date: 4-15-01





DSCN0957

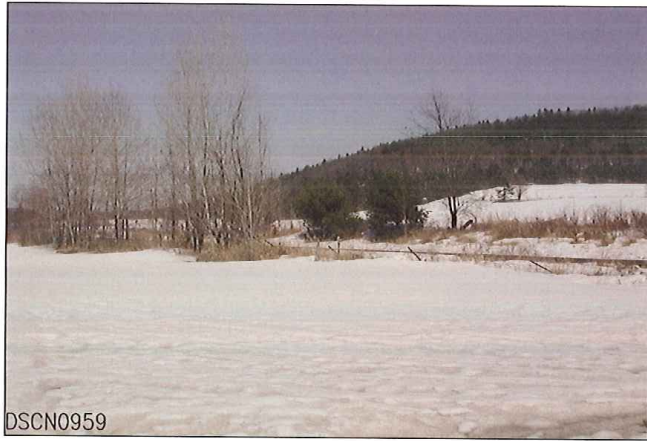
LOOKING FROM WEST TO EAST





DSCN0958

LOOKING FROM WEST TO SOUTH

 PARSONS, BRINCKERHOFF, QUADE & DOUGLAS, INC. 75 Arlington St., Boston, MA	Drawing Title NORTHERN VERMONT RAILROAD BRADFORD SUBDIVISION MALLORY'S CROSSING				
	Power Service Meter No.: _____ Type Roadway Material: _____ Railweight in Crossing: _____ Roundel Size: _____	Railroad Crossing MP: 15.43	City/Town FAIRLEE	U.S. DOT. NO. 053-576A	County ORANGE
By: RO		Check By:	Drawn By: MYM	Scale: NTS	Date:
				NV-19-06	4-15-01



LOOKING FROM WEST TO NORTH

 PARSONS, BRINCKERHOFF, QUADE & DOUGLAS, INC. 76 Arlington St., Boston, MA	Drawing Title NORTHERN VERMONT RAILROAD BRADFORD SUBDIVISION MALLORY'S CROSSING				
	Power Service Meter No.: _____ Type Roadway Material: _____ Railweight in Crossing: _____ Roundel Size: _____	Railroad Crossing MP: 15.43	City/Town FAIRLEE	U.S. DOT. NO. 053-576A	
By: RO Check By: _____ Drawn By: MYM Scale: NTS Date: 4-15-01				NV-19-07	