



EXIT 10 B

INTERSTATE 89 NORTH
Montpelier
1/2 MILE

EXIT 10 A

INTERSTATE 89 SOUTH
Concord NH

11/01/2019 09:32

EXIT 10 B

06-17 11.5 X 2.5

INTERSTATE 89 NORTH

Montpelier

1/2 MILE

06-17 14.0 X 10.0

EXIT 10 A

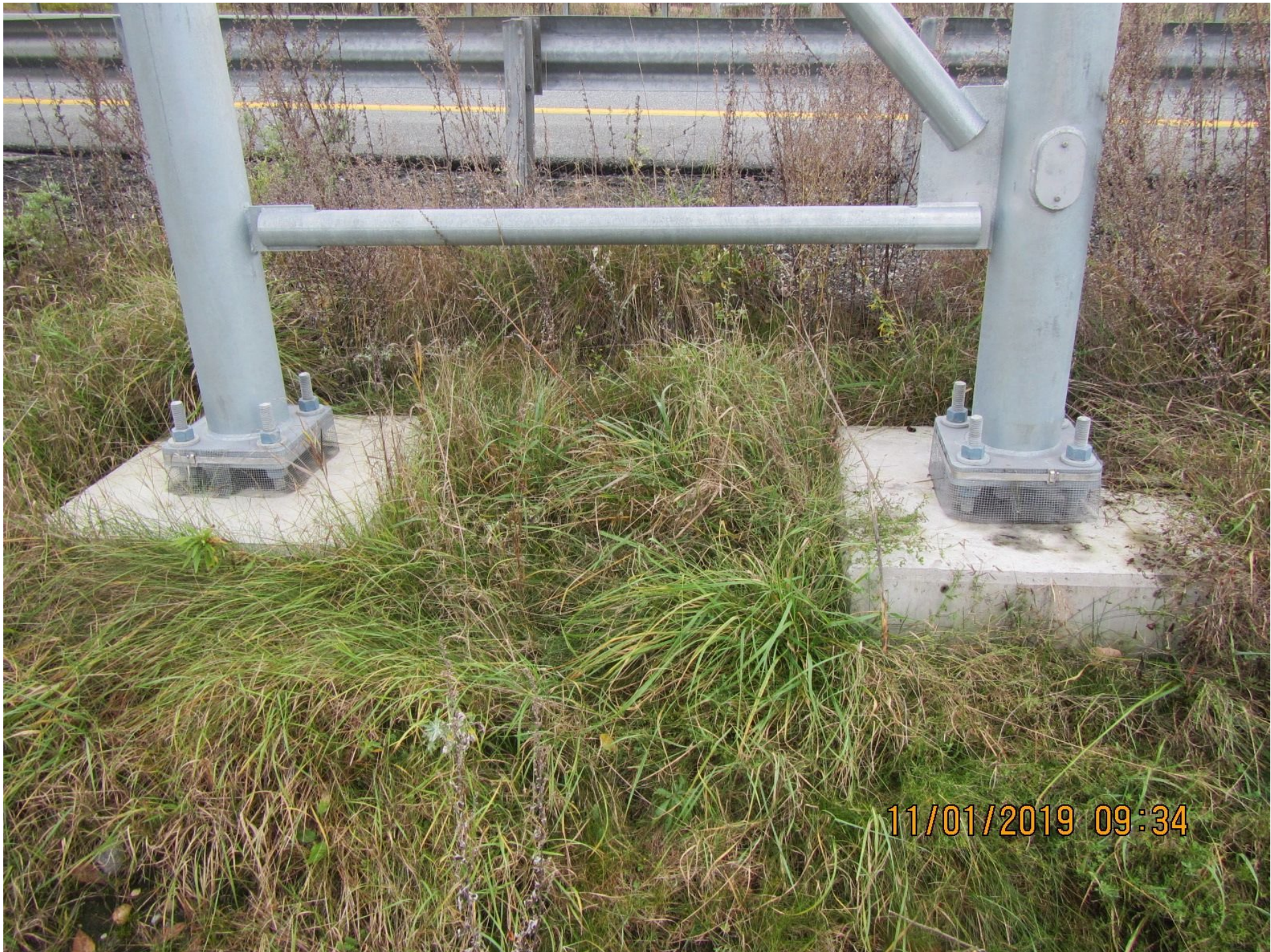
06-17 11.5 X 2.5

INTERSTATE 89 SOUTH

Concord NH

06-17 15.5 X 8.0

11/01/2019 09:32





11/01/2019 09:34



11/01/2019 09:34



11/01/2019 09:35

VT-14391

8/17

LT. COL = 8.625" O.D. X .322" X 28' - 4 5/8" 55 KSI MIN. YIELD

LEFT COL BRACE = 3.5" O.D. X .216 W. PIPE 55 KSI MIN. YIELD

RT. COL = 8.625" O.D. X .322" X 26' - 9" 55 KSI MIN. YIELD

RIGHT COL BRACE = 3.5" O.D. X .216 W. PIPE 55 KSI MIN. YIELD

CHORD = 4.5" O.D. X .237" W. PIPE = 70' - 0" 55 KSI MIN. YIELD

TRUSS BRACE = 2.375" O.D. X .154" 55 KSI MIN. YIELD

11/01/2019 09:36



11/01/2019 09:36