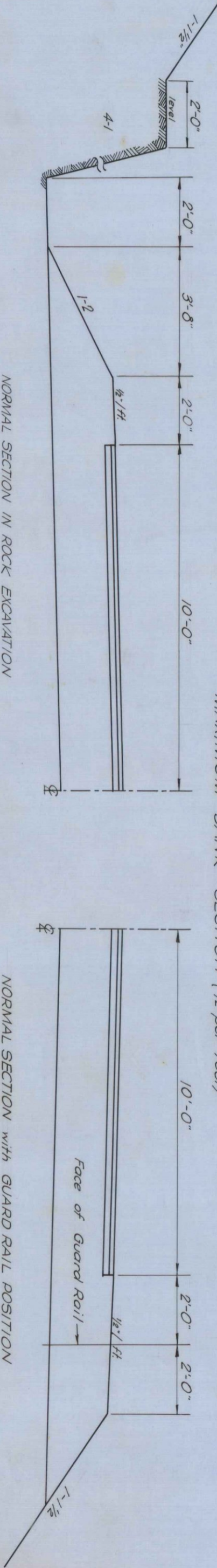
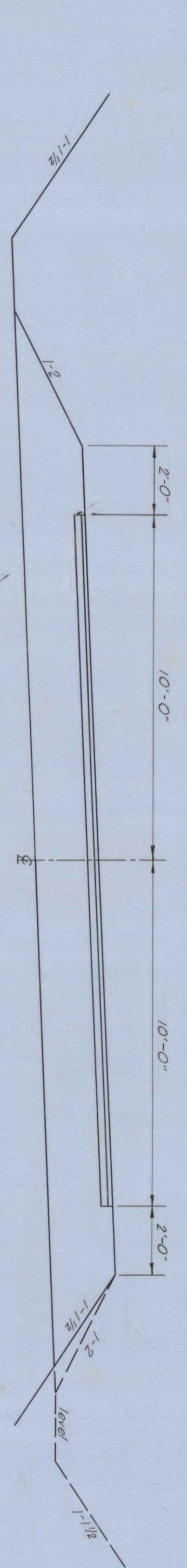
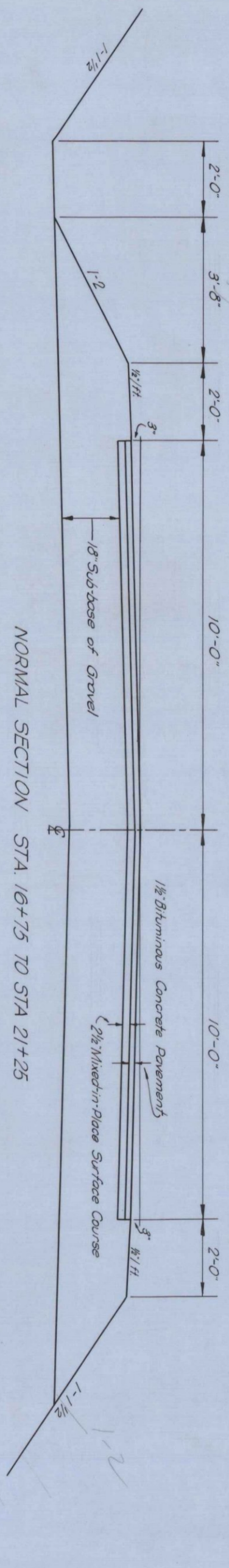
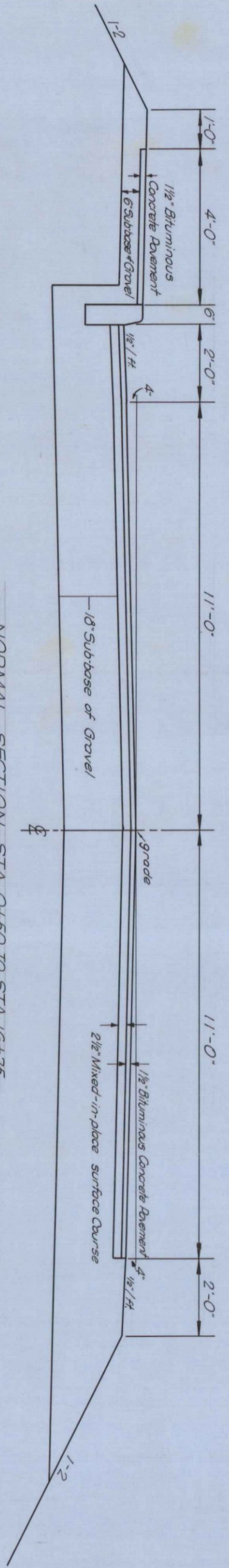


- INDEX OF SHEETS
- Sheet #1 Title and Typical
  - 2 Banking and Widening Tables
  - 3 Quantity Sheet (Items and Drainage)
  - 4 Earthwork Sheet
  - 5-9 Plan and Profile Sheets
  - 10 Construction Details (Drainage and Markers)
  - 11 Construction Details CD-1 (Ditches)
  - 12 Construction Details CD-2 (Concrete Gully Curb, Item 401-9) - CD-4
  - 13 Standard Structure Sheet S-40 (Barricade Signs and Lights)
  - 14 Standard Structure Sheet S-53-46 (Barricade Signs and Lights)
  - 15-22 Cross Sections

# VILLAGE OF STOWE

## STOWE, VERMONT

### COUNTY OF LAMOILLE



NORMAL SECTION IN ROCK EXCAVATION

NORMAL SECTION with GUARD RAIL POSITION

APPROVED

By \_\_\_\_\_

Checked By \_\_\_\_\_

Dated \_\_\_\_\_

Drawn By \_\_\_\_\_

Scale \_\_\_\_\_

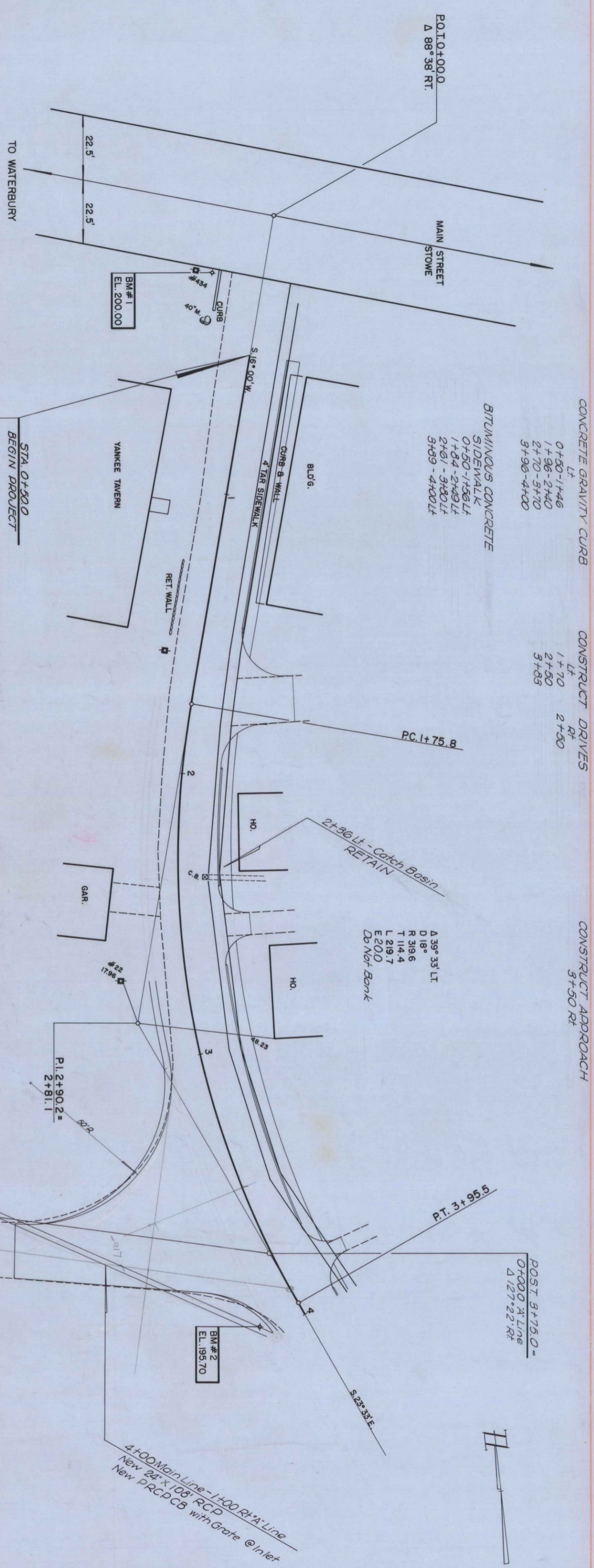
Traverse, Village of Stowe  
Stowe, Vermont





PROFILE		BY	DATE
DESIGNED	LAVIN	JR.	4/53
PLOTTED	JR.		6/53
NOTE BOOK			
NO.			
STRUCTURE	JR.		6/53

PLAN		BY	DATE
DESIGNED	LAVIN	JR.	5/53
PLOTTED	JR.		5/53
NOTE BOOK			
NO.			
TRACED	JR.		6/53



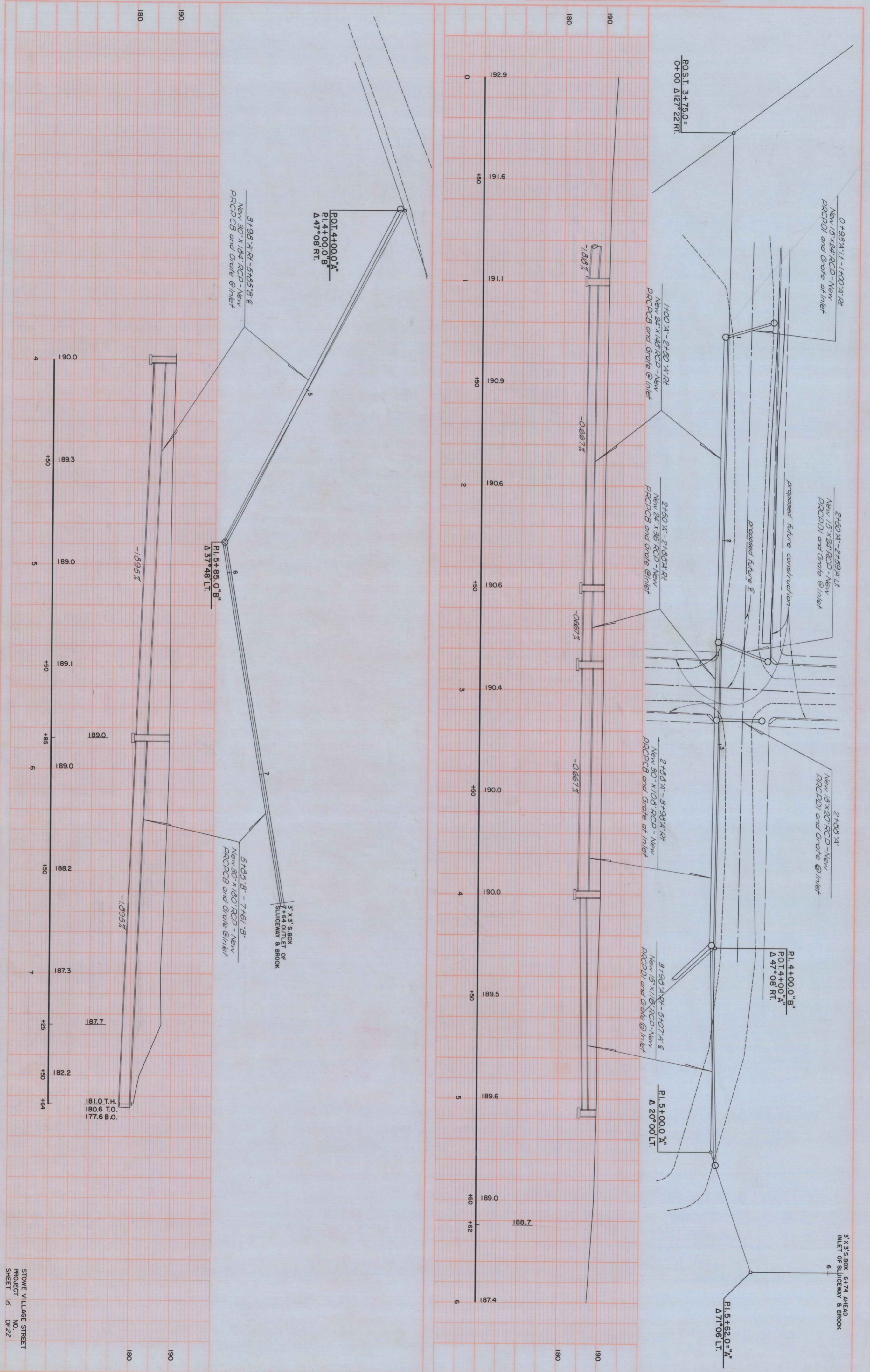
0 196.7  
 +21 194.6  
 +32 197.0  
 +50 197.5  
 +75 197.3  
 196.9  
 +35 194.6  
 +50 193.3  
 +70 192.2  
 2 191.4  
 +25 190.9  
 +36 190.7  
 +50 190.7  
 +75 190.9  
 3 191.3  
 +25 191.6  
 +50 192.1  
 +83 193.4  
 4 194.1

STOWE VILLAGE STREET  
 PROJECT NO 5  
 SHEET OF 22

SCALE: 1" = 40' HORIZ. 1" = 4' VERT.  
 APPROX. 1/8" = 1' CURB

PROFILE	SURVEYED	BY	DATE
NOTED BOOK	PLOTTED		
NO.	GRADES CHECKED		
	B. M. SIGNED		
	STANDARD NOTATION		

PLAN	SURVEYED	BY	DATE
NOTED BOOK	PLOTTED		
NO.	ALIGNMENT CHECKED		
	RT. OF WAY CHECKED		

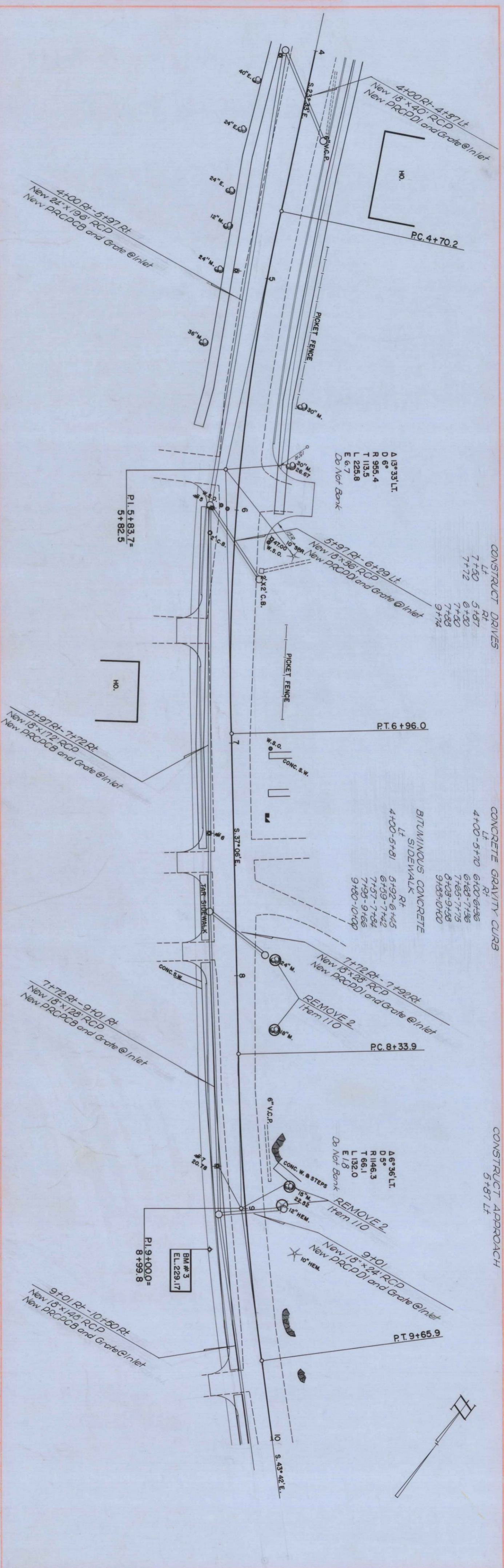
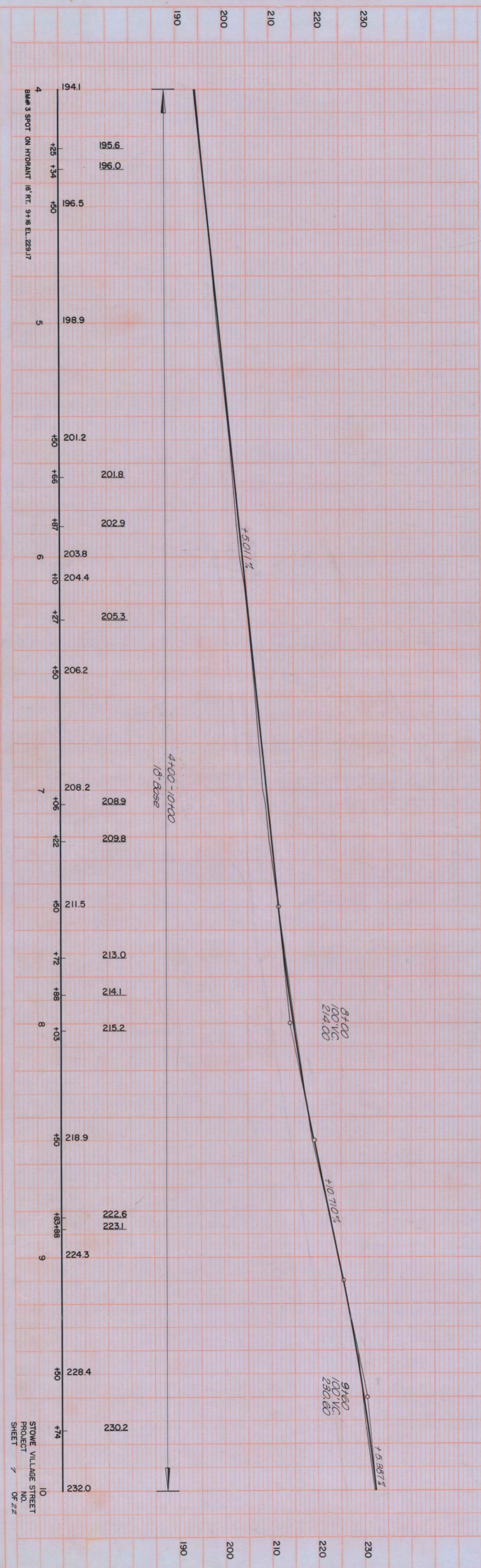


DATE: 11/10/01  
 DRAWN: J. J. J. J.  
 CHECKED: J. J. J. J.  
 PROJECT: STOWE VILLAGE STREET  
 SHEET: 5 OF 22

STOWE VILLAGE STREET  
 PROJECT NO. 0722  
 SHEET 5 OF 22

PROFILE			
DATE PLOTTED	LAVIN	4/83	
DATE CHECKED	JR.	6/83	
DATE NOTED	JR.	6/83	
STRUCTURE NO. & CH. NO.			

PLAN			
DATE PLOTTED	LAVIN	4/83	
DATE CHECKED	JR.	6/83	
DATE NOTED	JR.	6/83	
STRUCTURE NO. & CH. NO.			

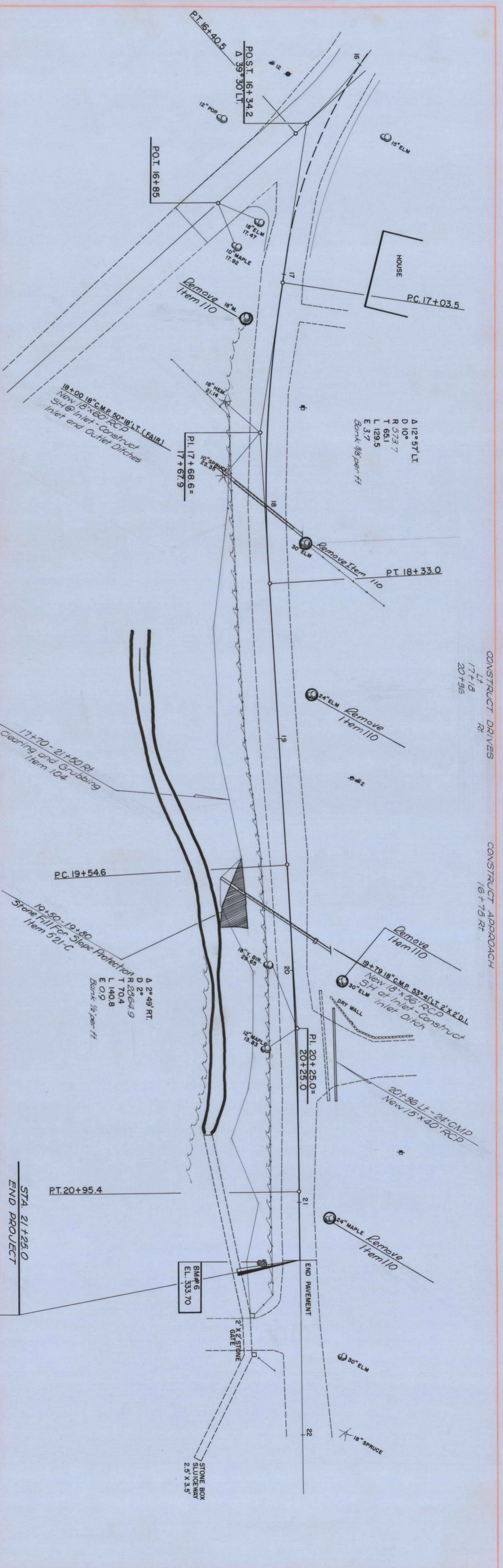
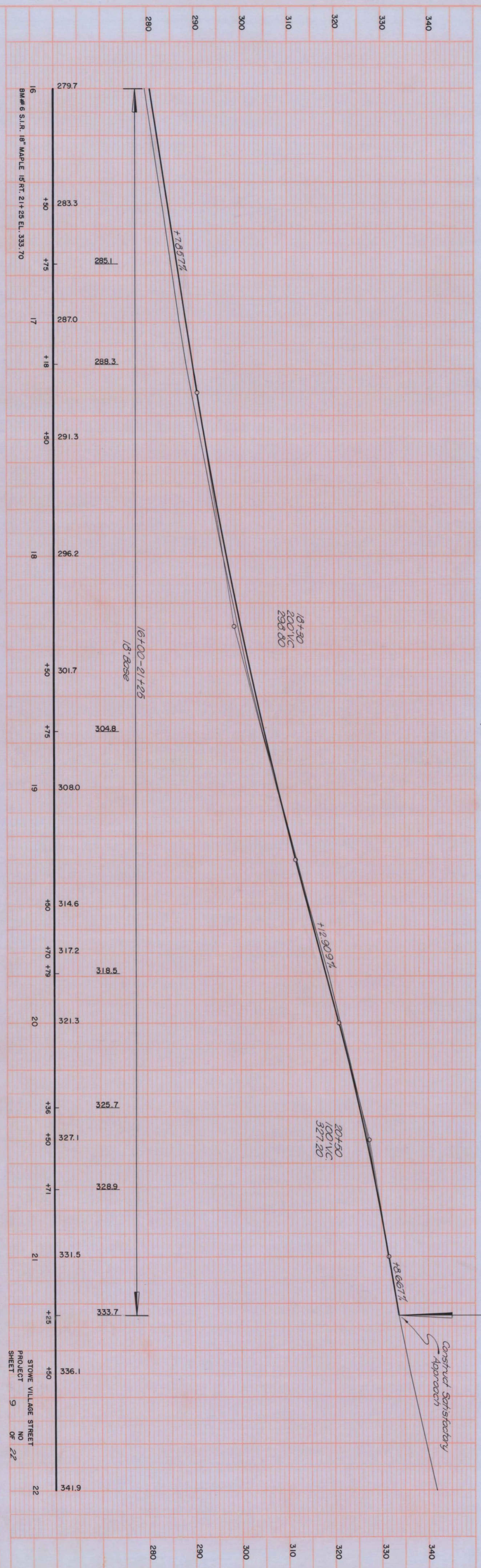


STONE VILLAGE STREET PROJECT SHEET NO. 7 OF 22



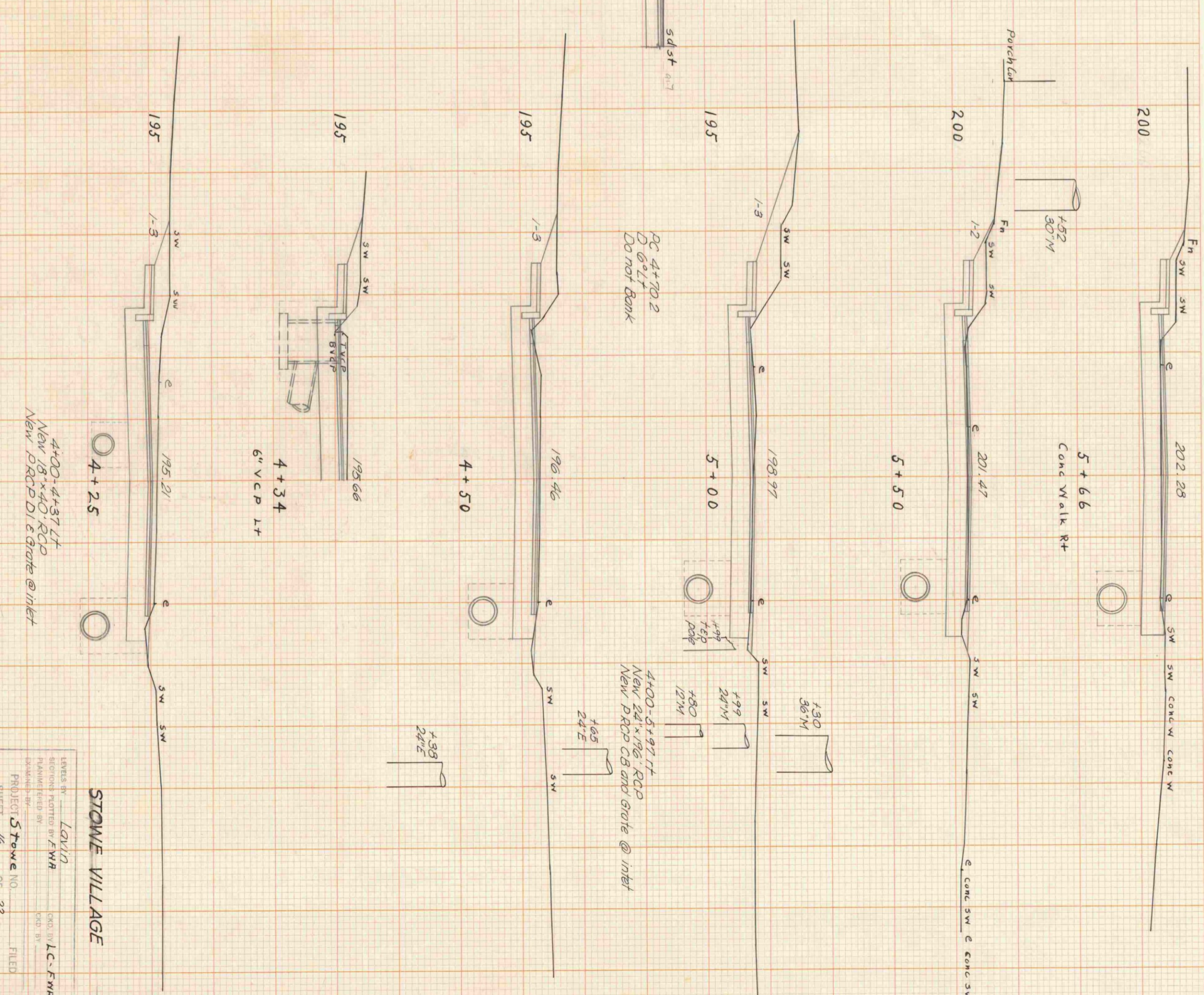
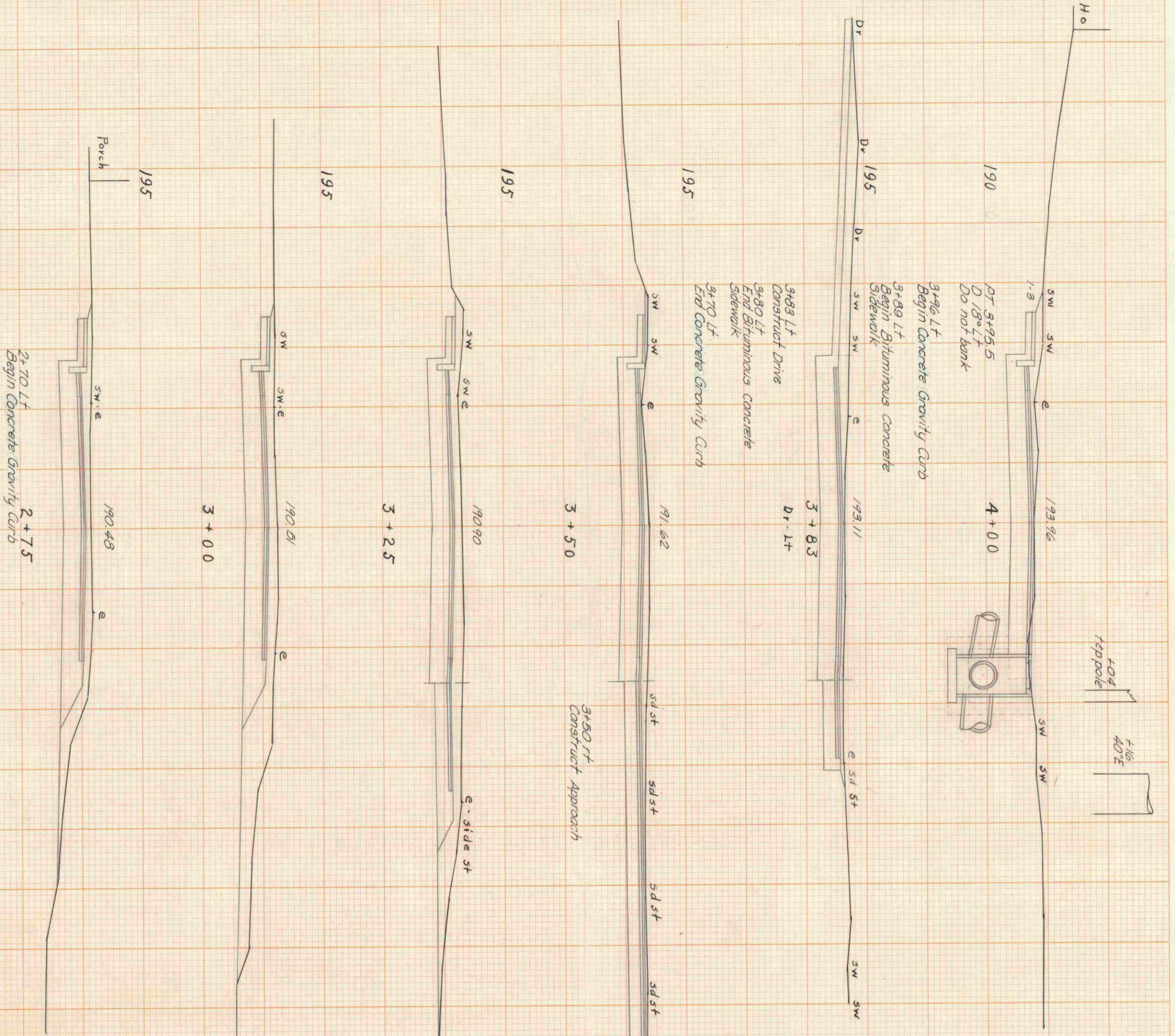
PROFILE	SURVEYED	BY	DATE
NOTE BOOK	PLOTTED		
NO.	GRADES CHECKED		
	S. W. NOTES		
	STRUCTURE NOT AT 1/8" TO 1/4"		

PLAN	REVISIONS	BY	DATE
NOTE BOOK	PLOTTED		
NO.	ALIGNMENT CHECKED		
	RT. OF WAY CHECKED		



PLANS: LINDSEY PRODUCTIONS, INC. & K.A.S. & COMPANY  
 SURVEYING & ENGINEERING, INC. 1000 W. 10TH AVE.  
 DENVER, CO. 80202  
 303.733.1111

STONE VILLAGE STREET  
 PROJECT NO. 9  
 SHEET OF 22

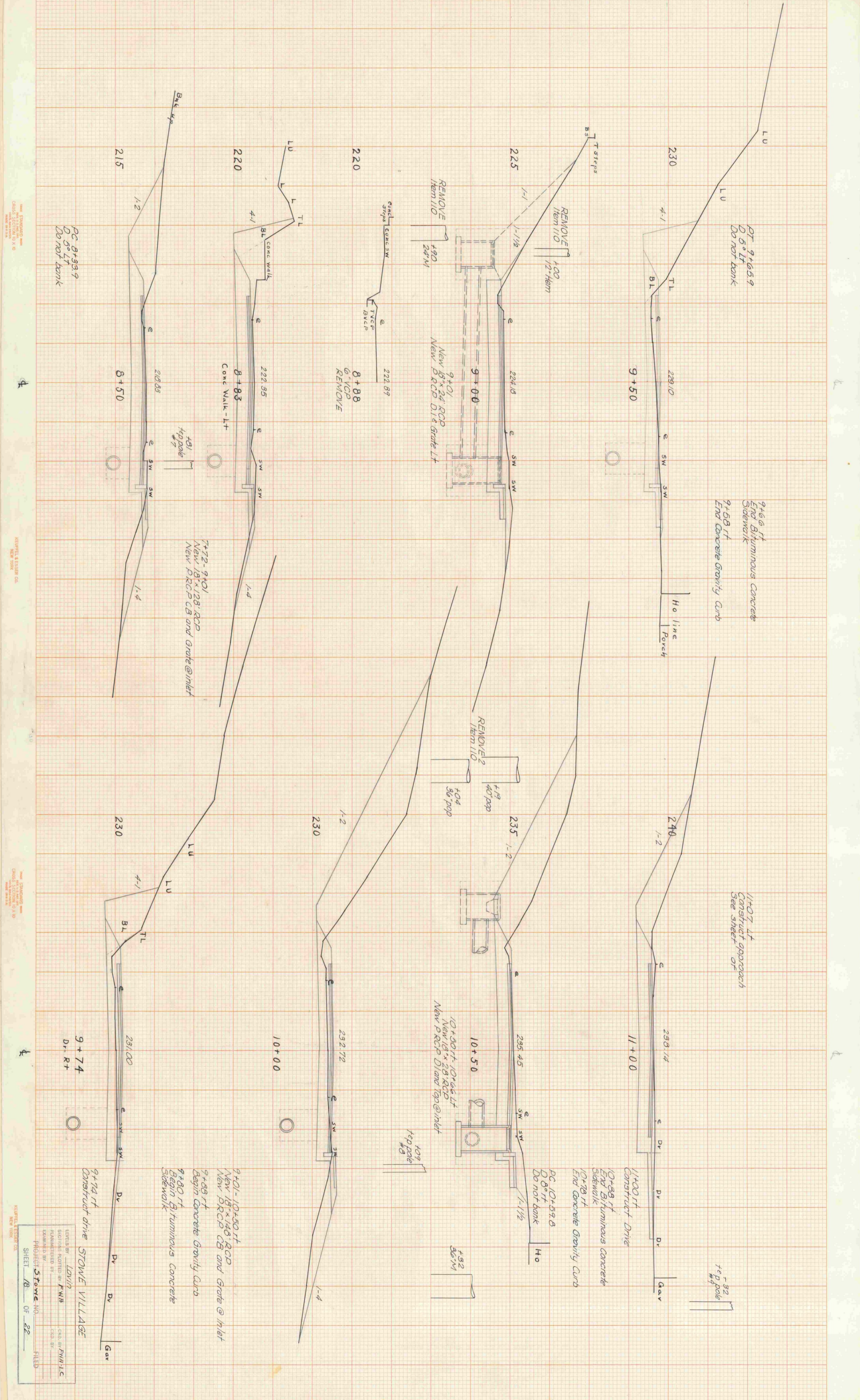


**STOWE VILLAGE**

DESIGNED BY: **LOWIN**  
 REVIEWED/PLOTTED BY: **F.W.H.**  
 PLANNED BY: **F.W.H.**  
 PROJECT NO.: **5 Stowe**  
 SHEET NO.: **16** OF **22**  
 DATE: **FILED**







DT 9+65.9  
D 5' LT  
Do not bank

9+66 ft  
End Bituminous Concrete  
Sidewalk  
9+58 ft  
End Concrete Gravity Curb

11+07 ft  
Construct approach  
See sheet of

1-32  
1" = 32'  
#9 pole

PC 8+33.9  
D 5' LT  
Do not bank

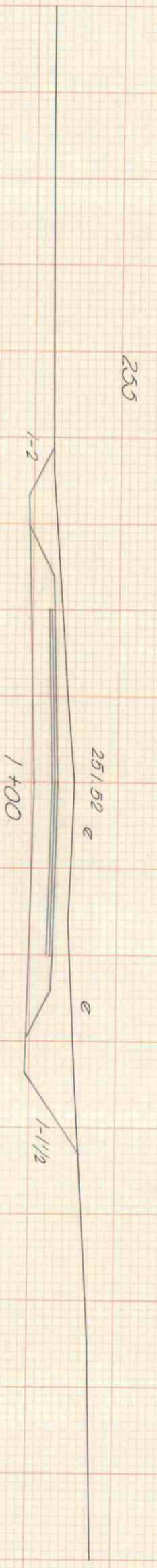
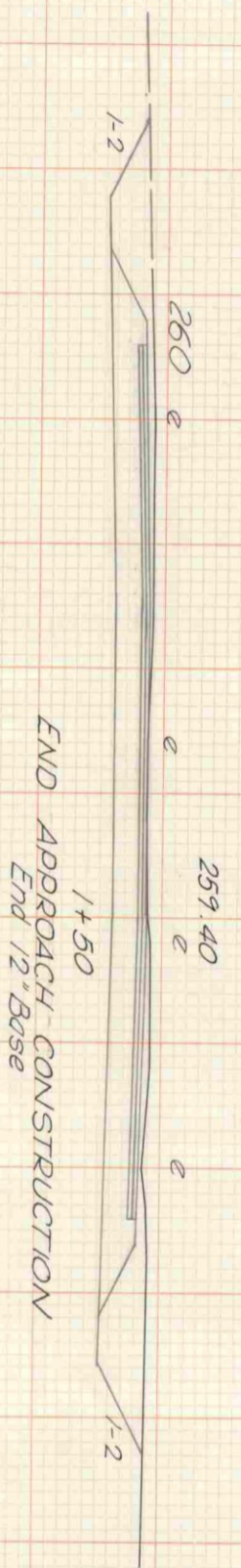
11+00 ft  
Construct Drive  
10+38 ft  
End Bituminous Concrete  
Sidewalk  
10+28 ft  
End Concrete Gravity Curb

PC 10+59.6  
D 6' RT  
Do not bank

10+30 ft 10+66 ft  
New 18" x 28" RCD  
New 18" x 24" RCD  
New 18" x 24" RCD @ inlet

7+72-9+01  
New 18" x 28" RCD  
New 18" x 24" RCD @ inlet

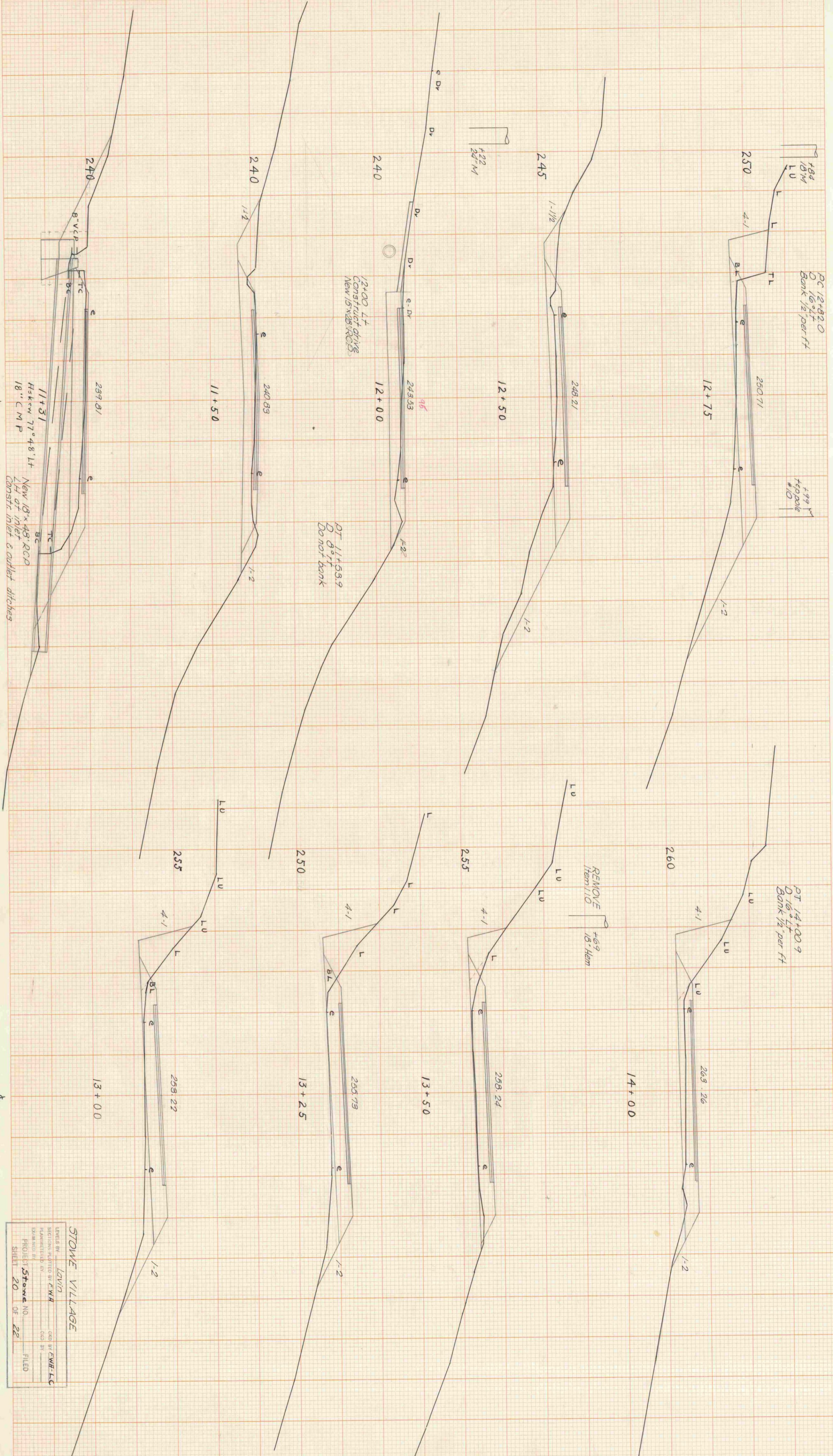
9+74 ft  
Construct drive  
STOWE VILLAGE



BEGIN APPROACH CONSTRUCTION  
Begin 12" Base

Approach Rt Sta 114070  
STONE VILLAGE

DESIGNED BY	LOWE	4-53
SECTION PLOTTED BY	CHAY	CHD
EXAMINED BY	STANE	FILED
PROJECT	19	NO. 22
SHEET	19	OF 22



PC 12+82.0  
D 16.0' LT  
Bank 1/2' per ft

+99' LM  
+99' pole  
#10

PT 14+00.9  
D 16.0' LT  
Bank 1/2' per ft

REMOVE  
Item 110  
+69'  
18.5' Hem

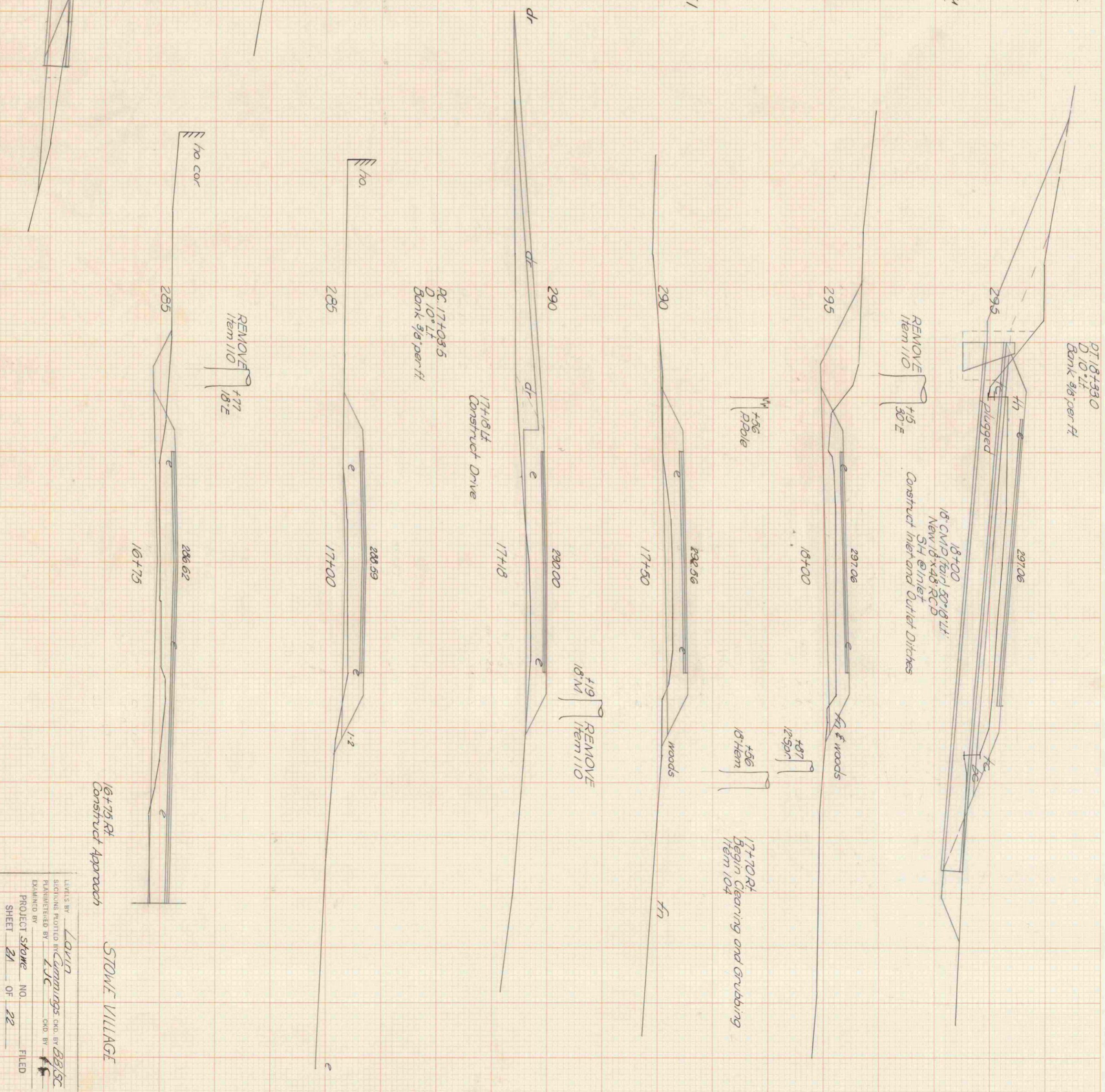
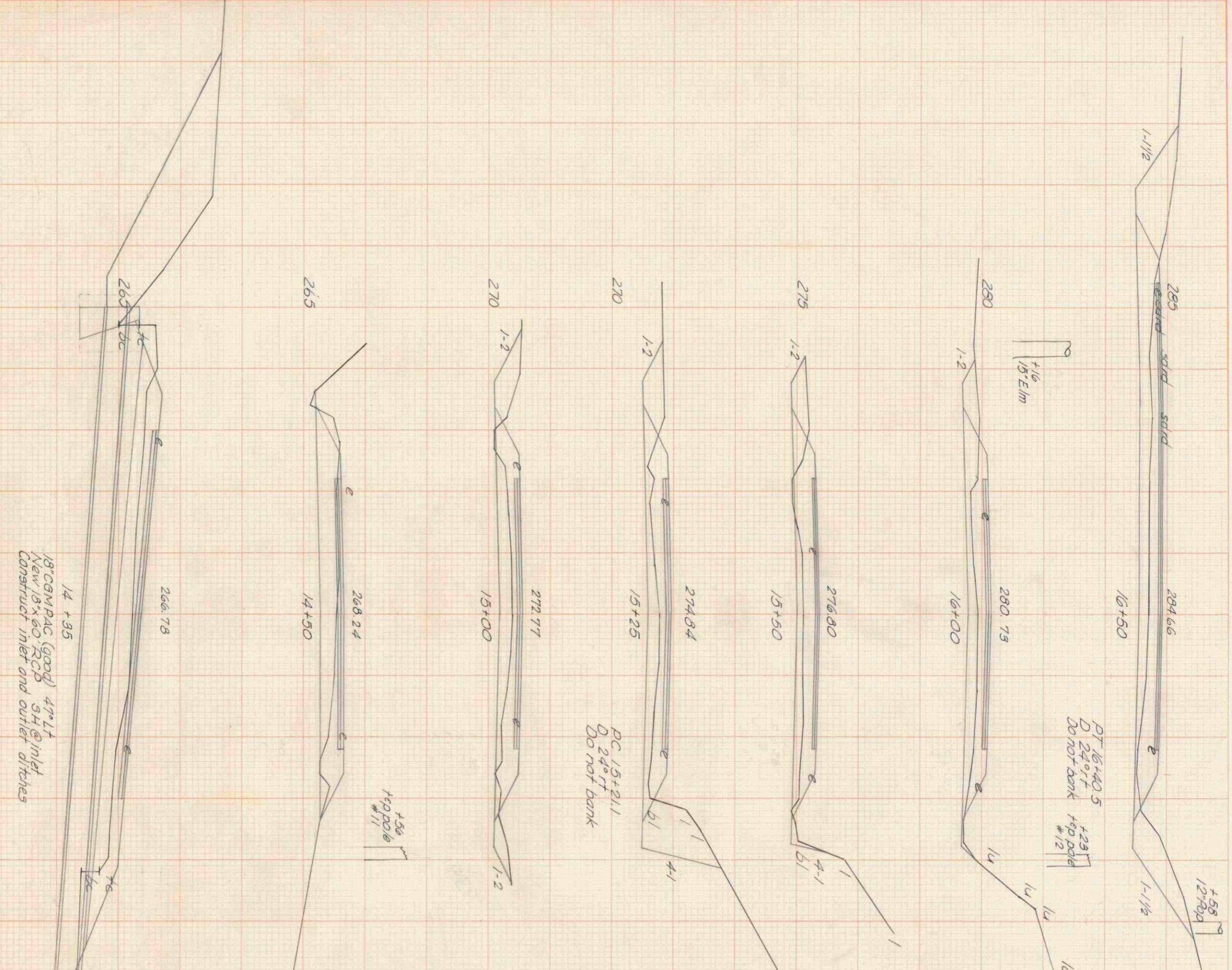
12+00 LT  
Construct driving  
New 15\"/>

DT 11+53.9  
D 8' LT  
Do not bank

11+31  
Hskew 77° 48' LT  
18\"/>

New 18\"/>

STOWE VILLAGE  
LEVELS BY: Lavin  
SECTIONS PLOTTED BY: FWA  
PLANNED BY: FWA  
EXAMINED BY: FWA  
PROJECT: Stowe No. 22  
SHEET: 20 OF 22  
FILED



LETTER: BY LOVIN  
 PLANNED BY Cummings CRO. BY BB/SC  
 EXAMINED BY KJC  
 PROJECT Stowe NO. 22  
 SHEET 21 OF 22  
 FILED

STOWE VILLAGE







# EARTHWORK

# EARTHWORK

# EARTHWORK SUMMARY

STATE OF VERMONT  
DEPARTMENT OF  
HIGHWAYS

GRADES										GRADES										SUMMARY OF BALANCES									
V.C. GRADE	STATION	ELEVATION ON TANGENT	ELEVATION ON CURVES	CORR. V.C.	DIST.	TOTAL EXCAVATION EARTH AND ROCK	CU YDS.	ROCK	AREA	CU YDS.	EMBAKMENT	AREA	CU YDS.	BASE	AREA	CU YDS.	STATION	TO STATION	EARTH EXCAV. CU YDS.	ROCK EXCAV. CU YDS.	EMBAKMENT CU YDS.	EXCESSES	ACCUMLATIVE EXCESSES	BASE					
%																													
0.000%	0+21	197.40	197.40	0	18	63	63										0+00	5+00	1175	1175	5	1165	1165	755					
	+50	197.50	197.24	-0.26	25	74	63										5+00	10+00	1191	92	34	1057	1165	755					
	+75	197.50	197.24	-0.26	25	74	63										10+00	15+00	1120	136	115	1004	1165	755					
	+50	197.50	197.24	-0.26	25	74	63										15+00	20+00	1009	25	19	984	1165	755					
	+75	197.50	197.24	-0.26	25	74	63										20+00	21+00	345	25	16	326	1165	755					
	+50	197.50	197.24	-0.26	25	74	63										ROADWAY TOTALS		484	253	219		103	348					
	+75	197.50	197.24	-0.26	25	74	63										APPR. RT. 3+50		145				15	103					
	+50	197.50	197.24	-0.26	25	74	63										APPR. LT. 5+67		15				15	118					
	+75	197.50	197.24	-0.26	25	74	63										APPR. LT. 11+07		645				645	158					
	+50	197.50	197.24	-0.26	25	74	63										DRIVWS		54				54	146					
	+75	197.50	197.24	-0.26	25	74	63										GRAND TOTAL		5703	253	228		5176	416					
	+50	197.50	197.24	-0.26	25	74	63																						
	+75	197.50	197.24	-0.26	25	74	63																						
	+50	197.50	197.24	-0.26	25	74	63																						
	+75	197.50	197.24	-0.26	25	74	63																						
	+50	197.50	197.24	-0.26	25	74	63																						
	+75	197.50	197.24	-0.26	25	74	63																						
	+50	197.50	197.24	-0.26	25	74	63																						
	+75	197.50	197.24	-0.26	25	74	63																						
	+50	197.50	197.24	-0.26	25	74	63																						
	+75	197.50	197.24	-0.26	25	74	63																						
	+50	197.50	197.24	-0.26	25	74	63																						
	+75	197.50	197.24	-0.26	25	74	63																						
	+50	197.50	197.24	-0.26	25	74	63																						
	+75	197.50	197.24	-0.26	25	74	63																						
	+50	197.50	197.24	-0.26	25	74	63																						
	+75	197.50	197.24	-0.26	25	74	63																						
	+50	197.50	197.24	-0.26	25	74	63																						
	+75	197.50	197.24	-0.26	25	74	63																						
	+50	197.50	197.24	-0.26	25	74	63																						
	+75	197.50	197.24	-0.26	25	74	63																						
	+50	197.50	197.24	-0.26	25	74	63																						
	+75	197.50	197.24	-0.26	25	74	63																						
	+50	197.50	197.24	-0.26	25	74	63																						
	+75	197.50	197.24	-0.26	25	74	63																						
	+50	197.50	197.24	-0.26	25	74	63																						
	+75	197.50	197.24	-0.26	25	74	63																						
	+50	197.50	197.24	-0.26	25	74	63																						
	+75	197.50	197.24	-0.26	25	74	63																						
	+50	197.50	197.24	-0.26	25	74	63																						
	+75	197.50	197.24	-0.26	25	74	63																						
	+50	197.50	197.24	-0.26	25	74	63																						
	+75	197.50	197.24	-0.26	25	74	63																						
	+50	197.50	197.24	-0.26	25	74	63																						
	+75	197.50	197.24	-0.26	25	74	63																						
	+50	197.50	197.24	-0.26	25	74	63																						
	+75	197.50	197.24	-0.26	25	74	63																						
	+50	197.50	197.24	-0.26	25	74	63																						
	+75	197.50	197.24	-0.26	25	74	63																						
	+50	197.50	197.24	-0.26	25	74	63																						
	+75	197.50	197.24	-0.26	25	74	63																						
	+50	197.50	197.24	-0.26	25	74	63																						
	+75	197.50	197.24	-0.26	25	74	63																						
	+50	197.50	197.24	-0.26	25	74	63																						
	+75	197.50	197.24	-0.26	25	74	63																						
	+50	197.50	197.24	-0.26	25	74	63																						
	+75	197.50	197.24	-0.26	25	74	63																						
	+50	197.50	197.24	-0.26	25	74	63																						
	+75	197.50	197.24	-0.26	25	74	63																						
	+50	197.50	197.24	-0.26	25	74	63																						
	+75	197.50	197.24	-0.26	25	74	63																						
	+50	197.50	197.24	-0.26	25	74	63																						
	+75	197.50	197.24	-0.26	25	74	63																						
	+50	197.50	197.24	-0.26	25	74	63																						
	+75	197.50	197.24	-0.26	25	74	63																						
	+50	197.50	197.24	-0.26	25	74	63																						
	+75	197.50	197.24	-0.26	25	74	63																						
	+50	197.50	197.24	-0.26	25	74	63																						
	+75	197.50	197.2																										









Vermont Agency of  
Transportation  
Phase III- Interstate  
#090303-01

INITIALS

Hanger 5312

PHONE



STOWE WILLAGE