

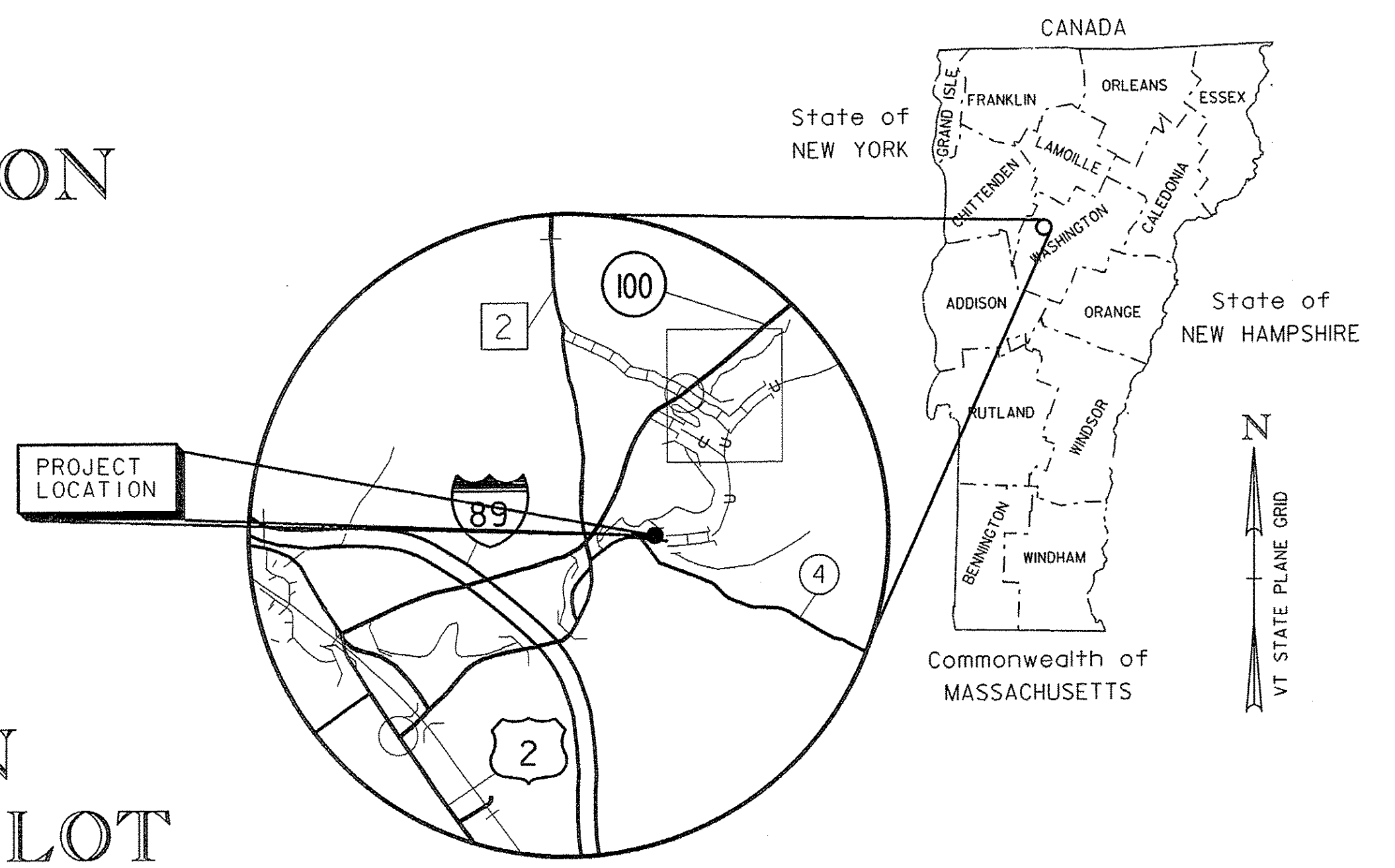
STATE OF VERMONT AGENCY OF TRANSPORTATION



PROPOSED IMPROVEMENT TOWN OF WATERBURY COUNTY OF WASHINGTON COMMUTER PARK-AND-RIDE LOT

THIS PROJECT IS LOCATED ON THE NORTH SIDE OF LINCOLN STREET IN THE TOWN OF WATERBURY,
PAST PERRY HILL ROAD ON THE LEFT.

WORK TO BE PERFORMED UNDER THIS PROJECT INCLUDES RECONSTRUCTION OF THE EXISTING PARK-AND-RIDE LOT,
STABILIZING OF EASTERN SLOPE WITH STONE FILL, A BUS SHELTER, PAVEMENT MARKINGS, LIGHTING AND OTHER APPURTENANCES.



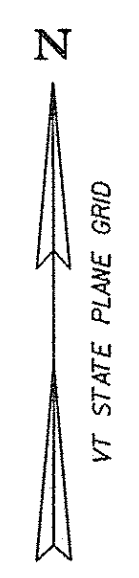
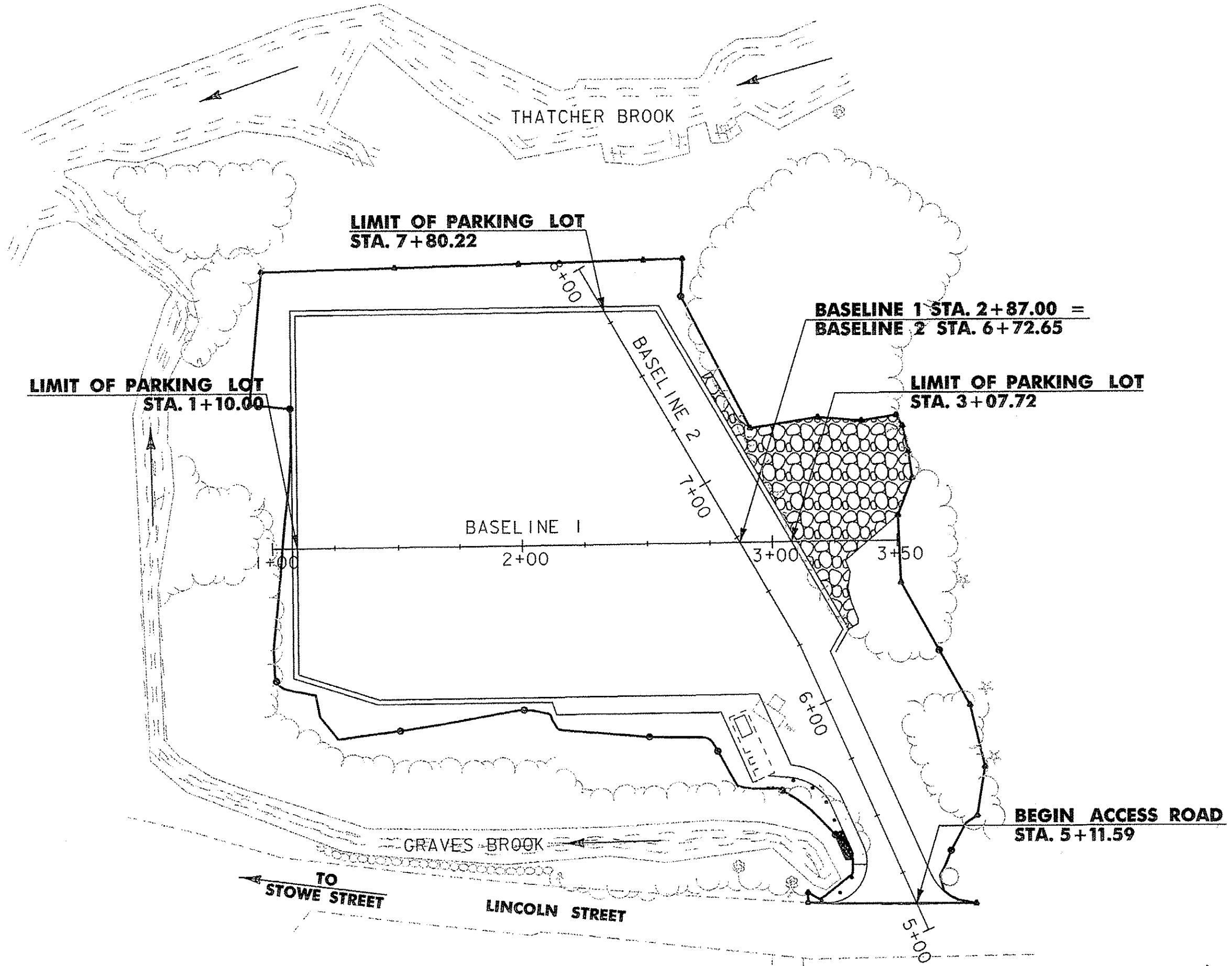
LOCATION MAP
1"=2000' @ FULL SIZE
(APPROXIMATE)

INDEX OF SHEETS

- 1 TITLE SHEET
- 2 TYPICAL SECTION
- 3-4 QUANTITY SHEETS
- 5 EARTHWORKS SHEET
- 6 SURVEY TIES
- 7 LAYOUT PLAN AND GENERAL NOTES
- 8-9 BASELINE PROFILES
- 10 CONSTRUCTION APPROACH SIGNING
- 11 SIGNING & PAVEMENT MARKING PLAN
- 12 SIDE ROAD SIGNING
- 13 SIGN DETAILS
- 14-15 TRAFFIC SIGN SUMMARY SHEETS
- 16 LIGHTING, LANDSCAPING & UTILITY PLAN
- 17-19 LIGHTING DETAILS
- 20 LANDSCAPING DETAILS
- 21 MISCELLANEOUS DETAILS
- 22-23 BUS SHELTER DETAILS
- 24 EPSC EXISTING CONDITIONS SITE PLAN
- 25 EPSC CONSTRUCTION SITE PLAN
- 26 EPSC FINAL CONDITIONS SITE PLAN
- 27-29 EPSC DETAILS
- 30-32 BASELINE CROSS SECTIONS

INDEX OF STANDARDS

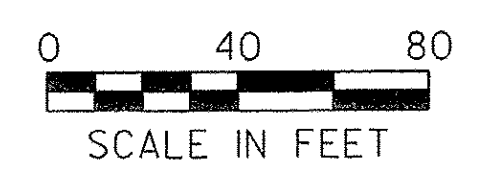
- B-5 06-01-94
- D-20 03-03-03
- E-100 01-02-04
- E-101 05-30-03
- E-102 06-30-03
- E-106 03-01-04
- E-107 06-30-03
- E-107A 06-08-09
- E-110 08-08-95
- E-121 08-08-95
- E-132 08-18-95
- E-143 06-15-04
- E-144 03-29-99
- E-164 06-08-09
- E-173 08-09-95
- E-175 06-08-09
- E-180A 08-09-95
- E-180B 08-09-95
- E-191 02-01-99
- E-192 10-12-00
- E-193 08-18-95
- G-4 06-01-94
- J-2 06-01-94



CONVENTIONAL SYMBOLS

TOWN LINE	---
FENCE LINE	X---X---X---X
STONE WALL	o---o---o---o
TRAVELED WAY	--- --- ---
GUARD RAIL	o---o---o---o
RAILROAD	
SURVEY LINE	---
CULVERT	--- ---
POWER POLE	o
TELEPHONE POLE	o
LIGHT POLE/LUMINAIRE	o
TREES	* * * *
CONTROL OF ACCESS	///
PROPERTY LINE	---
R.O.W. TAKING LINE	---
TOP OF CUT	△
TOE OF SLOPE	○
CLEAR ZONE	CZ
SILT FENCE	▬
WETLANDS	▬

SURVEYED BY : VERMONT SURVEY AND ENGINEERING, INC.
SURVEYED DATE : 3/02
DATUM
VERTICAL NAVD 88
HORIZONTAL NAD 83 (1996)



RECORD PLANS

CONTRACTOR: J. HUTCHINS, INC. - RICHMOND, VT

RESIDENT ENGINEER: TOM MANCINI

CONSTRUCTION BEGAN: MARCH 17, 2010

CONSTRUCTION COMPLETE: JULY 21, 2010

RECORD PLANS BY: TOM MANCINI & DARREN CONNOLLY

I HEREBY CERTIFY THAT ALL THE CONSTRUCTION REQUIRED BY THIS SET OF DRAWINGS HAS BEEN ACCOMPLISHED AS INDICATED HEREIN.

BY *Tom Mancini* RESIDENT ENGINEER
DATE 2/29/12

NOTE: Any further information concerning final quantities, amounts or other details relative to this project may be found at Central Files in the electronic archives.

THESE PLANS ARE SUBJECT TO SUCH ENGINEERING CHANGES AS MAY BE REQUIRED BY THE FEDERAL HIGHWAY ADMINISTRATION OR THE DIRECTOR OF PROGRAM DEVELOPMENT.
CONSTRUCTION IS TO BE CARRIED ON IN ACCORDANCE WITH THESE PLANS AND THE STANDARD SPECIFICATIONS FOR CONSTRUCTION DATED 2006, AS APPROVED BY THE FEDERAL HIGHWAY ADMINISTRATION ON JUNE 15, 2006 FOR USE ON THIS PROJECT, INCLUDING ALL SUBSEQUENT REVISIONS AND SUCH REVISED SPECIFICATIONS AND SPECIAL PROVISIONS AS ARE INCORPORATED IN THESE PLANS.

DIRECTOR OF PROGRAM DEVELOPMENT
APPROVED *Robert Johnson* DATE 11-16-09
PROJECT MANAGER : WAYNE L. DAVIS
PROJECT NAME: WATERBURY
PROJECT NUMBER: CMG PARK (11) S RE-ADVERTISED
SHEET 1 OF 32 SHEETS

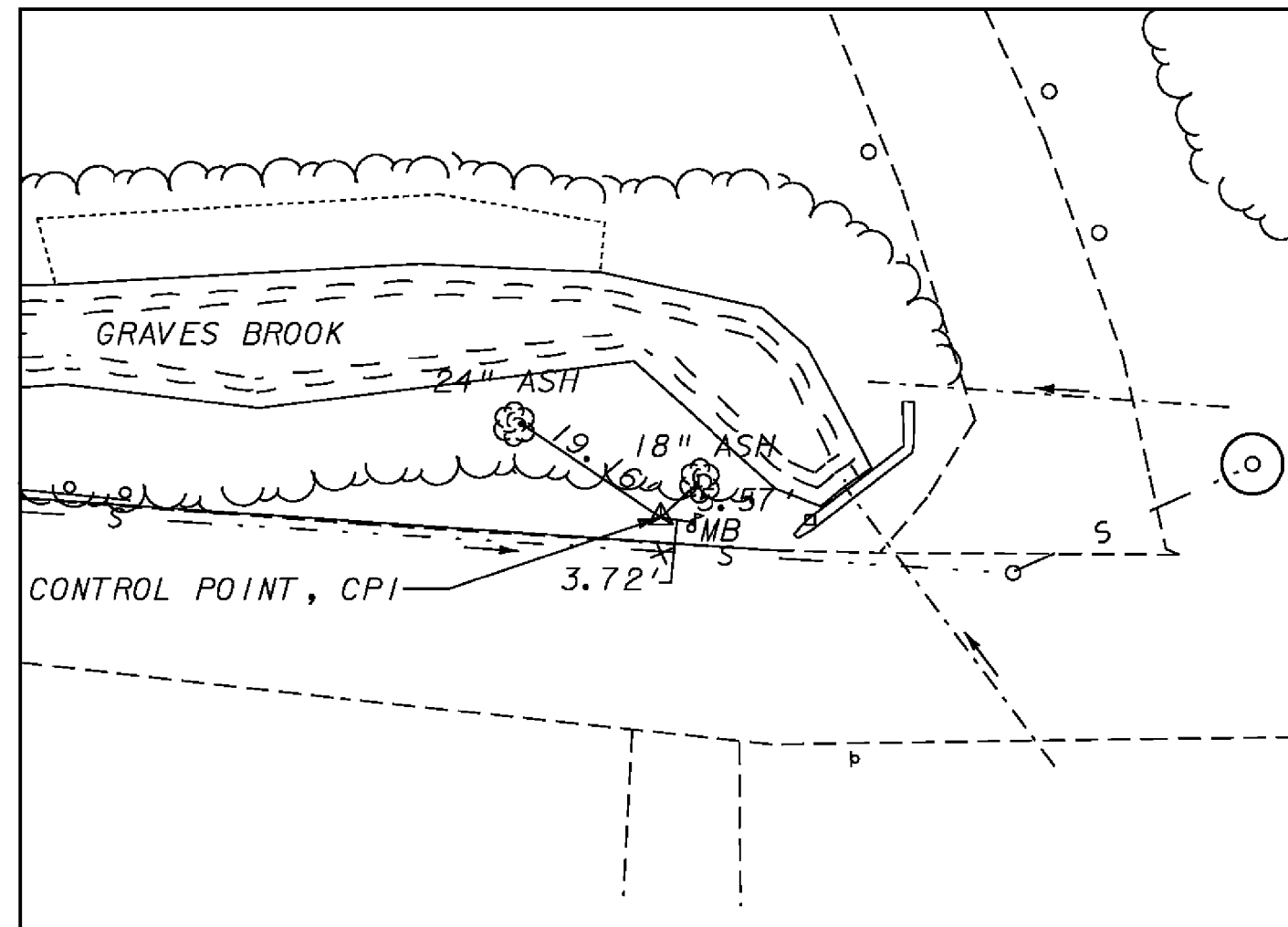
LAYOUT POINTS

LAYOUT POINT #	NORTHING*	EASTING*	STATION	OFFSET	BASELINE
LP1	672546.998	1576776.229	5+29.93	39.36 LT	BL-2
LP2	672546.416	1576843.604	5+01.74	21.83 RT	BL-2
LP3	672558.204	1576825.319	5+20.00	10.00 RT	BL-2
LP4	672575.168	1576795.748	5+47.61	10.00 LT	BL-2
LP5	672590.266	1576788.950	5+64.16	10.00 LT	BL-2
LP6	672647.201	1576785.249	6+17.60	10.00 RT	BL-2
LP7	672656.075	1576790.321	6+23.610	18.19 RT	BL-2
LP8	672784.129	1576715.652	7+69.935	18.00 RT	BL-2
LP9	672782.866	1576571.326	1+10.00	93.40 LT	BL-1
LP10	672639.209	1576572.565	1+10.00	50.26 RT	BL-1
LP11	672629.052	1576604.743	1+42.09	60.70 RT	BL-1
LP12	672629.689	1576677.486	2+14.84	60.70 RT	BL-1
LP13	672630.381	1576756.631	6+14.01	23.00 LT	BL-2
LP14	672601.910	1576769.440	5+82.79	23.01 LT	BL-2
LP15	672595.870	1576755.99	5+82.81	37.75 LT	BL-2
LP16	672566.380	1576794.180	5+40.24	15.04 LT	BL-2
LP17	672550.370	1576793.940	5+25.74	21.83 LT	BL-2

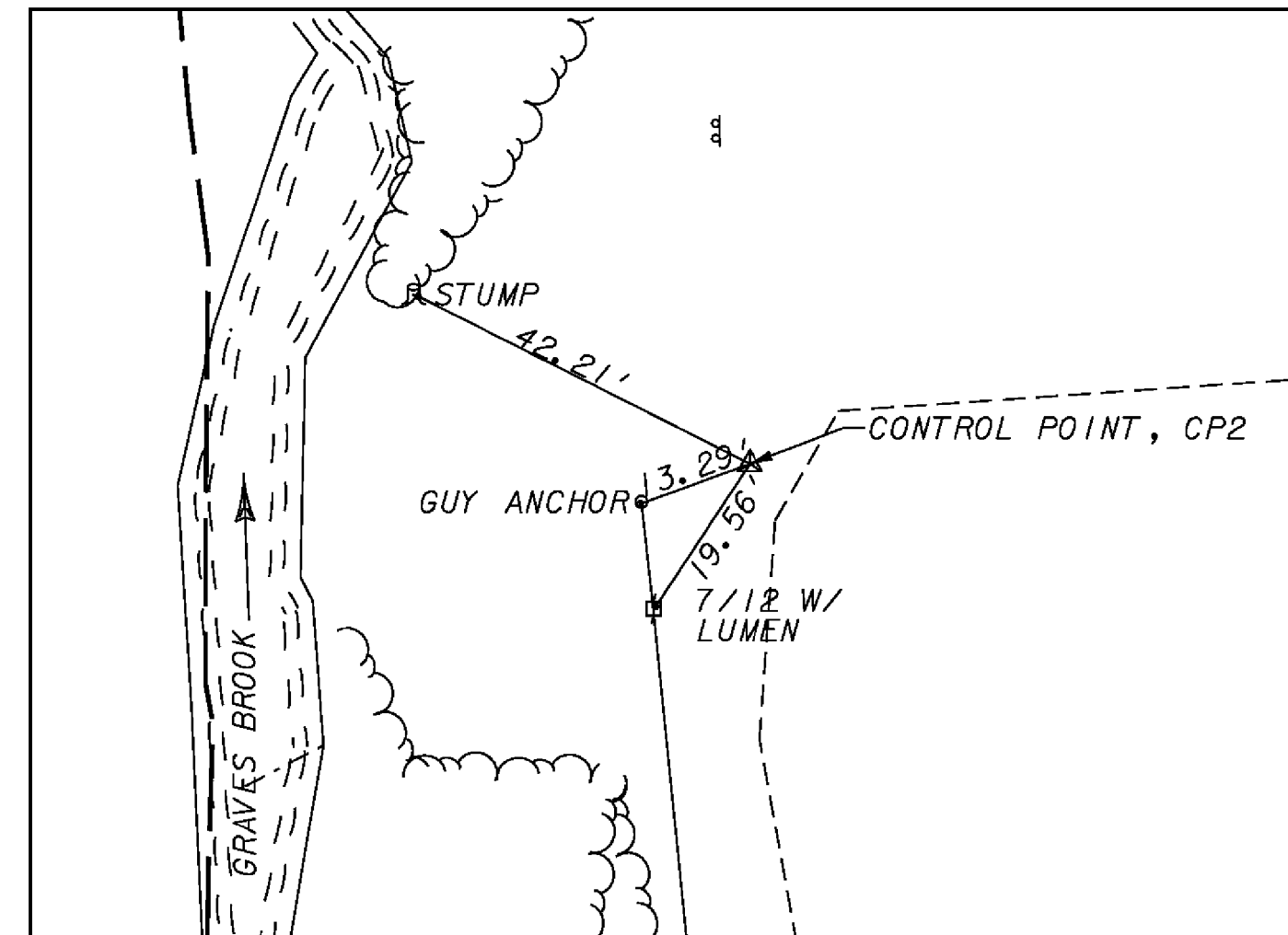
505.73 }
 506.20 } REVISED FINISHED ELEVATIONS
 505.90 }

* IN ORDER TO MATCH THE VERMONT STATE GRID COORDINATE SYSTEM, ADD 600,000 TO THE NORTHING COORDINATES AND ADD 1,500,000 TO THE EASTING COORDINATES. ELEVATIONS NEED NO ADJUSTMENT.

TRAVERSE TIES



CONTROL POINT #1

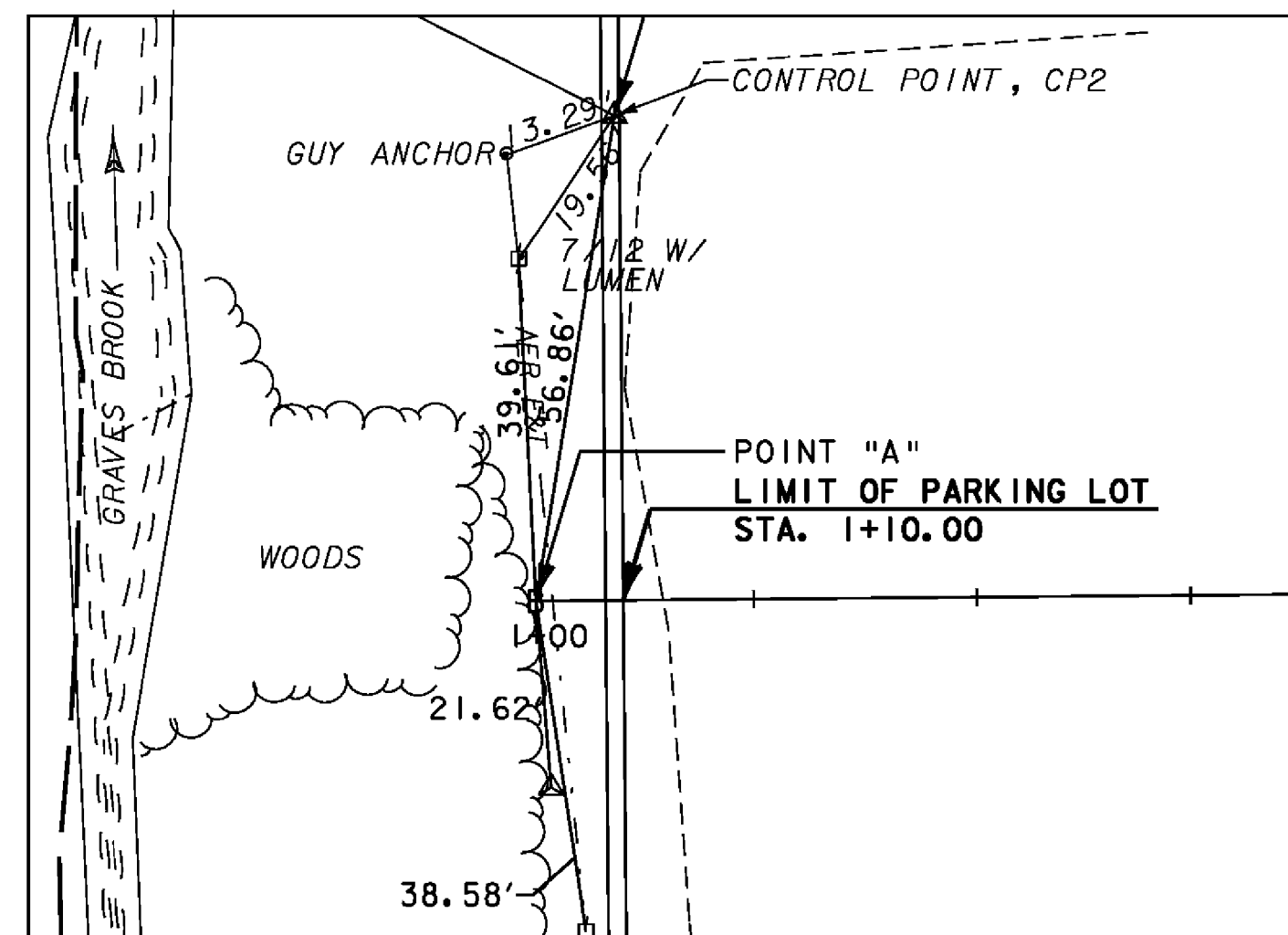


CONTROL POINT #2

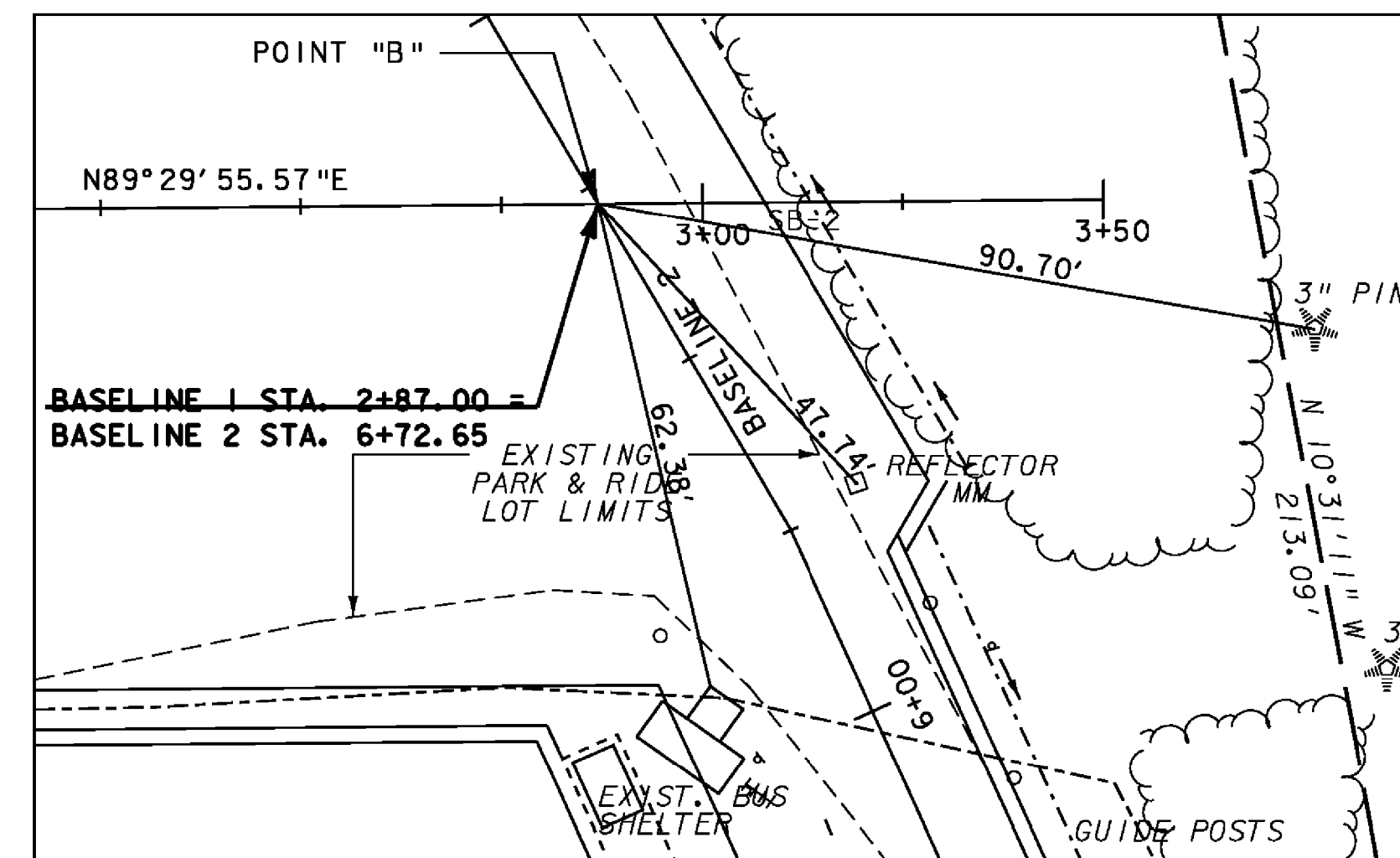
CONTROL POINTS

POINT	NORTHING*	EASTING*	ELEVATION
CP1	672550.680'	1576765.079'	506.17'
CP2	672745.527'	1576571.115'	502.59'

ALIGNMENT TIES



ALIGNMENT POINT A



ALIGNMENT POINT B (1" = 20' @ FULL SIZE)
 SCALE

ALIGNMENT POINTS

POINT	NORTHING*	EASTING*
A	672689.382'	1576562.125'
B	672691.018'	1576749.109'

DATUM
 VERTICAL NAVD 88
 HORIZONTAL NAD 83 (1996)

PROJECT NAME: WATERBURY
 PROJECT NUMBER: CMG PARK(II)S RE-ADVERTISED
 FILE NAME: zk0021e.dgn
 PROJECT LEADER: WLD
 DESIGNED BY: BEM
 SURVEY TIES
 PLOT DATE: 19-NOV-2009
 DRAWN BY: BEM
 CHECKED BY: AJB
 SHEET 6 OF 32

GENERAL NOTES

- FOR A SUMMARY OF CONTROL POINTS AND ALIGNMENT LAYOUT POINTS, SEE SURVEY TIES SHEET.
- FOR PAVEMENT MARKINGS AND SIGN DETAILS SEE SIGNING AND PAVEMENT MARKING PLAN SHEET.
- FOR LIGHTING DETAILS SEE LIGHTING PLAN & DETAIL SHEETS
- EXISTING BUS SHELTER AND BICYCLE RACK TO BE REMOVED AND STORED ON-SITE AT A LOCATION TO BE DETERMINED BY THE ENGINEER FOR PICK-UP BY GMTA (MR. AARON FRANKS, CHITTENDEN COUNTY TRANSPORTATION AUTHORITY, 15 INDUSTRIAL PARKWAY, BURLINGTON, VT 05401 (802)864-2282). WORK TO BE PAID FOR AS SPECIAL PROVISION (REMOVE AND SALVAGE EXISTING BUS SHELTER). REMOVAL OF EXISTING CONCRETE PAD TO BE PAID FOR AS SOLID ROCK EXCAVATION.
- DURING CONSTRUCTION THE EXISTING PARK-AND-RIDE SHALL BE CLOSED TO ALL TRAFFIC.
- THE BUS SHELTER SHALL BE PAID FOR AS SPECIAL PROVISION (BUS SHELTER). INCLUDED IN THIS WORK SHALL BE ALL STRUCTURAL MATERIALS USED TO CONSTRUCT THE BUS SHELTER. FOR DETAILS OF THESE STRUCTURAL ITEMS.
- THE BICYCLE RACK SHALL BE PAID FOR AS SPECIAL PROVISION (BICYCLE RACK). FOR BICYCLE RACK DETAILS, SEE LANDSCAPING AND MISCELLANEOUS DETAILS.
- SURFACES AND PAVEMENT TO BE REMOVED OUTSIDE THE CUT/FILL LIMITS SHALL BE PAID FOR AS EXCAVATION OF SURFACES AND PAVEMENTS.
- SLOPE ROUNDING: ALL CUT SLOPES TO BE ROUNDED IN ACCORDANCE WITH STANDARD SHEET B-5 UNLESS OTHERWISE NOTED ON THE PLANS.
- EMULSIFIED ASPHALT SHALL BE APPLIED AT THE RATE OF 0.025 GAL/SYBETWEEN SUCCESSIVE COURSES OF PAVEMENT OR AS DIRECTED BY THE ENGINEER.
- PARKING LOT SHOULDERS TO BE TOPSOILED, SEEDED & MULCHED.
- THE CONTRACTOR IS DIRECTED TO SUBSECTION 301.06 REGARDING THE COMPACTION OF SUBBASE MATERIAL FOR THIS PROJECT.
- FOR PG BINDER GRADES SEE SECTION 406 OF THE GENERAL SPECIAL PROVISIONS.

EXCAVATION OF SURFACES AND PAVEMENTS

STA. BL1 1+19, 58.80' RT. TO 1+88, 65.00' RT.

YIELDING MARKER POSTS

STA. BL2 5+28, 34.19' LT. TO 5+77, 24.70' LT.

CLEARING AND GRUBBING

STA. BL2 5+25, RT. TO 5+83, RT.

STA. BL2 6+27, RT. TO 7+65, RT.

SPECIAL PROVISION (BUS SHELTER)

STA. BL2 6+05, 34.00' LT. (CENTERED)

SPECIAL PROVISION (BICYCLE RACK)

STA. BL2 5+91, 36.81' LT. (CENTERED)

METAL HAND RAILING

STA. BL2 5+32.24, 18.23' LT. TO 5+38.43, 15.33' LT.

STONE FILL, TYPE II

STA. BL2 5+38, 15.62' LT. TO 5+50, 15.38' LT.

STA. BL2 6+23, 20.38' RT. TO 7+37, 20.00' RT.

RELAYING PIPE CULVERTS

STA. BL2 5+23, 16.50' RT. TO 5+42, 20.00' LT.

SPECIAL PROVISION (INFILTRATION TRENCH)

STA. BL1 0+98.38, 109.09' LT. TO 2+62.87, 112.13' LT.

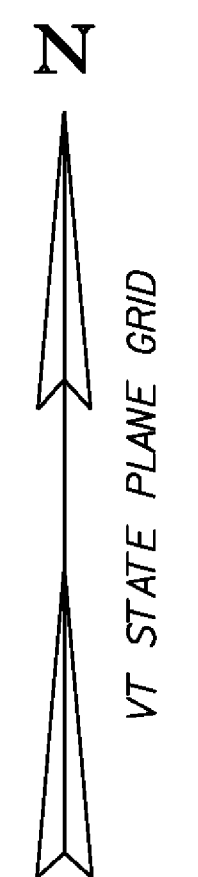
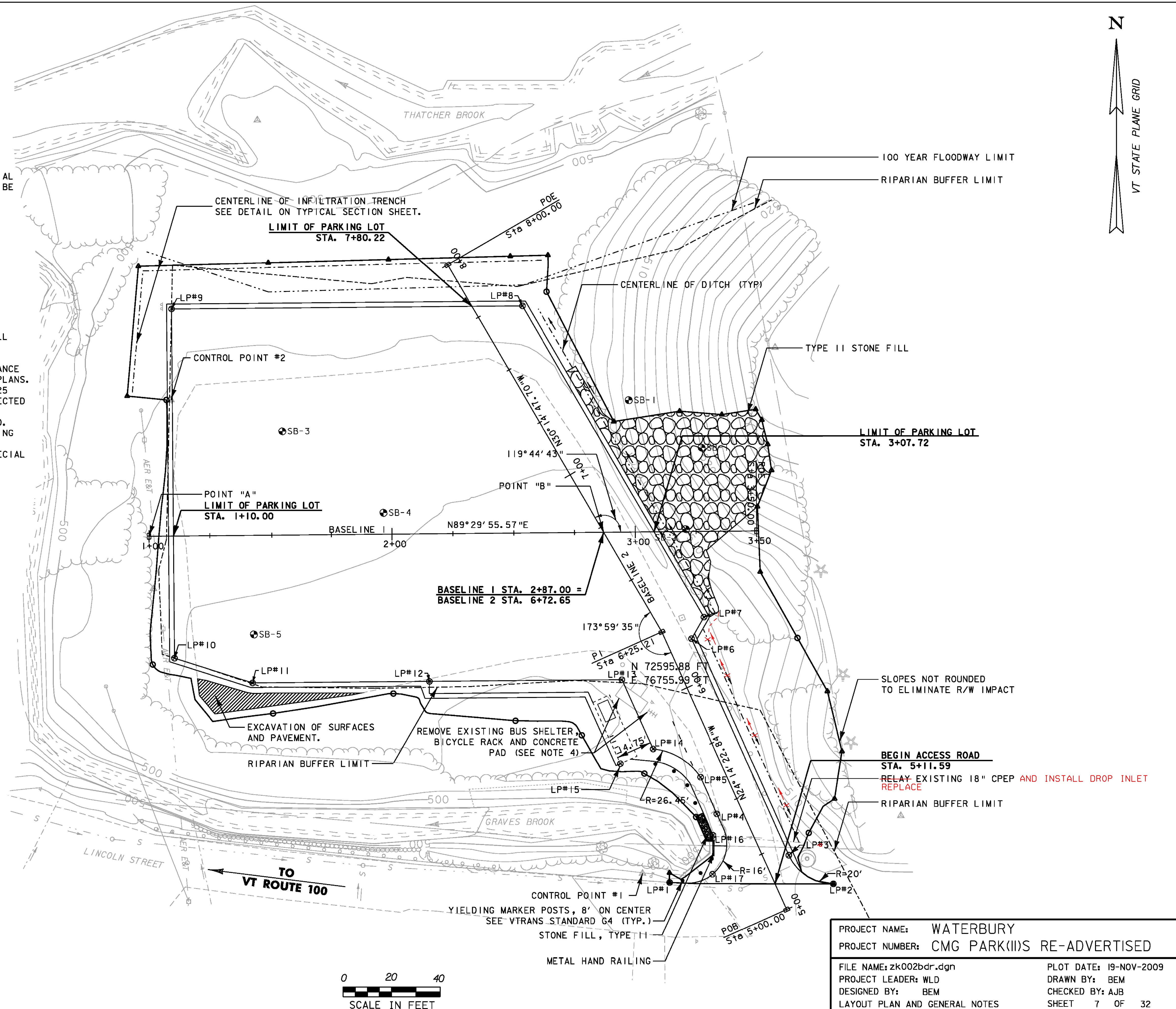
STA. BL2 8+20.08, 138.45' LT. TO 8+60.94, 109.63' LT.

LEGEND:

LAYOUT POINTS	⊙
100 YEAR FLOODWAY LIMIT	-----
RIPARIAN BUFFER LIMIT	-----
DITCH CENTERLINE	-----
CONSTRUCTION LIMITS	○-----△
PROPERTY LINE	-----

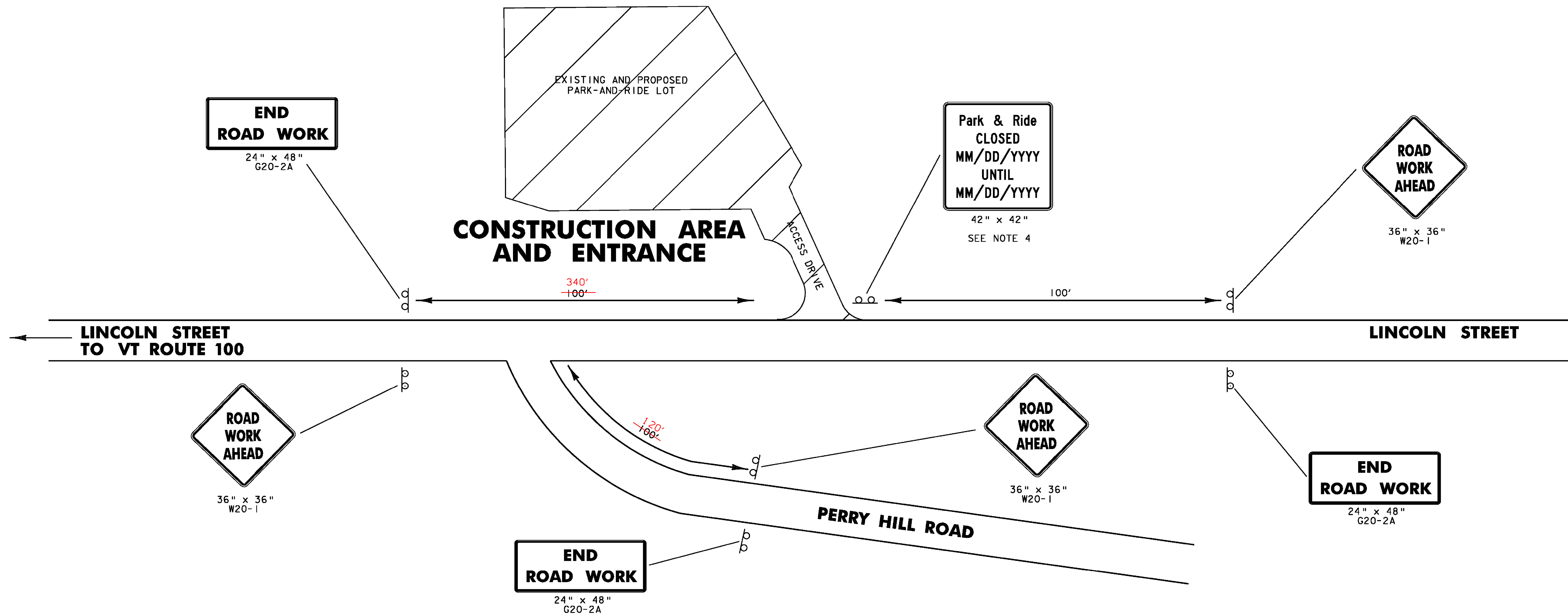
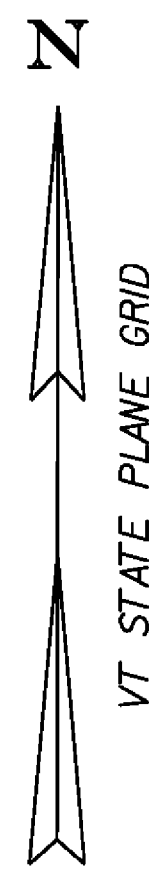
NOTE:

FOR ADDITIONAL INFORMATION SEE CROSS SECTIONS. FOR LAYOUT POINT COORDINATES SEE THE TABLE ON SURVEY TIES SHEET.



PROJECT NAME:	WATERBURY
PROJECT NUMBER:	CMG PARK(II)S RE-ADVERTISED
FILE NAME:	zk002bdr.dgn
PROJECT LEADER:	WLD
DESIGNED BY:	BEM
LAYOUT PLAN AND GENERAL NOTES	
PLOT DATE:	19-NOV-2009
DRAWN BY:	BEM
CHECKED BY:	AJB
SHEET	7 OF 32





LEGEND

ERW = END ROAD WORK
RWA = ROAD WORK AHEAD

LOCATION	ERW	RWA
LINCOLN STREET WEST	1	1
LINCOLN STREET EAST	1	1
PERRY HILL ROAD	1	1
TOTALS	3	3

CONSTRUCTION APPROACH SIGNING

NOT TO SCALE
SEE VTrans STANDARD E-100 FOR SIGN PLACEMENT.
REFER TO THE LATEST EDITION OF MUTCD (TABLE 6C-1) FOR SIGN PLACEMENT IN URBAN LOW SPEED AREAS

NOTES:

1. NO CONSTRUCTION SIGNS SHALL BE INSTALLED AS TO INTERFERE OR OBSTRUCT THE VIEW OF EXISTING TRAFFIC CONTROL DEVICES, STOPPING SIGHT DISTANCES, OR CORNER SIGHT DISTANCES FROM DRIVES AND TOWN HIGHWAYS.
2. ACCESS TO ALL BUSINESSES AND RESIDENCIES ADJACENT TO THE PROJECT AREA MUST BE MAINTAINED THROUGHOUT CONSTRUCTION.
3. THIS TRAFFIC CONTROL PLAN WAS DESIGNED IN ACCORDANCE WITH SECTION 6 OF THE 2003 EDITION OF THE MUTCD. ALTERNATIVE TRAFFIC CONTROL PLANS MUST BE DESIGNED IN ACCORDANCE WITH THE MUTCD AND APPROVED BY THE RESIDENT ENGINEER.
4. DATES OF PARK-AND-RIDE CLOSURE SHALL BE PROVIDED BY RESIDENT ENGINEER PRIOR TO THE MANUFACTURE OF THE SIGN.
5. PAYMENT FOR CONSTRUCTION SIGNING WILL BE MADE UNDER CONTRACT ITEM 641.10.

PROJECT NAME: WATERBURY	PLOT DATE: 19-NOV-2009
PROJECT NUMBER: CMG PARK(II)S RE-ADVERTISED	DRAWN BY: BEM
FILE NAME: zk002frm.dgn	CHECKED BY: AJB
PROJECT LEADER: WLD	SHEET 10 OF 32
DESIGNED BY: BEM	
CONSTRUCTION APPROACH SIGNING	

SIGN LEGEND

- N = NEW
- R = REMOVE
- R&S = REMOVE & SALVAGE
- S = SALVAGE SIGN
- RET = RETAIN
- B-B = BACK TO BACK
- = EXISTING
- = PROPOSED

NOTES:

1. RETAIN ALL EXISTING SIGNS UNLESS OTHERWISE DIRECTED BY ENGINEER.
2. ALL PARK AND RIDE SIGNS SHALL BE COVERED FOR THE DURATION OF CONSTRUCTION.



**INTERSTATE 89
NORTH TO BURLINGTON**

**INTERSTATE 89
EXIT 10**

**INTERSTATE 89
SOUTH TO MONTPELIER**

BLUSH HILL

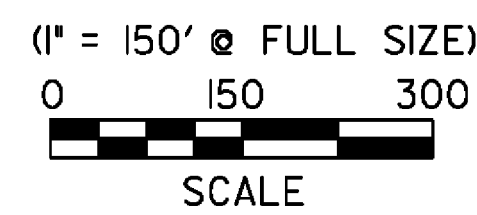
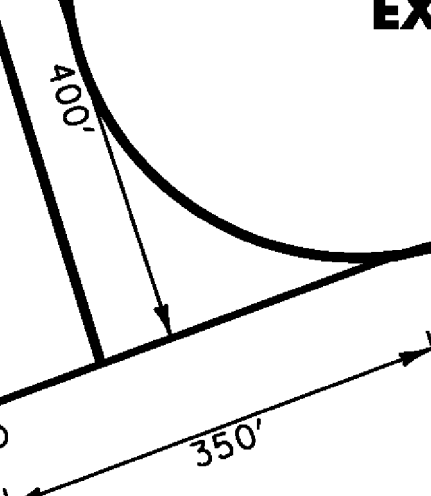
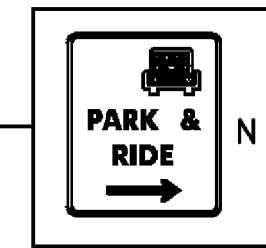
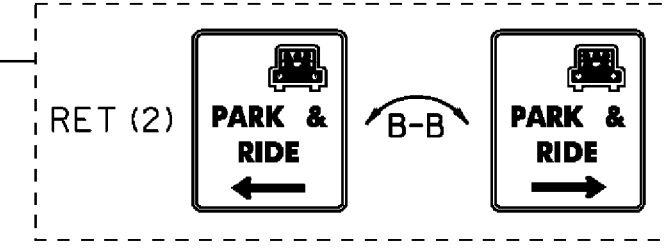
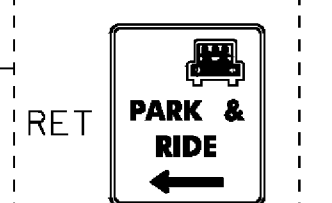
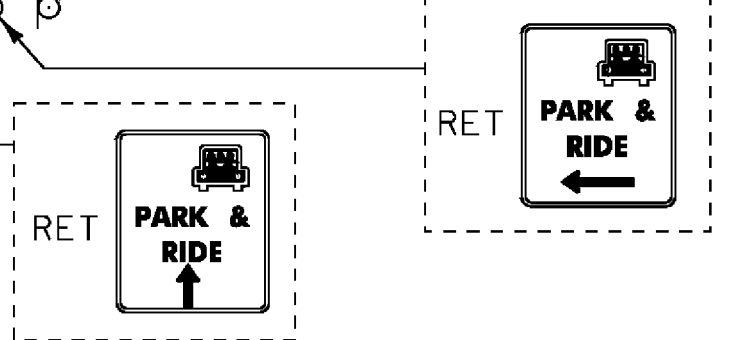
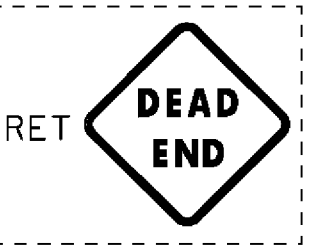
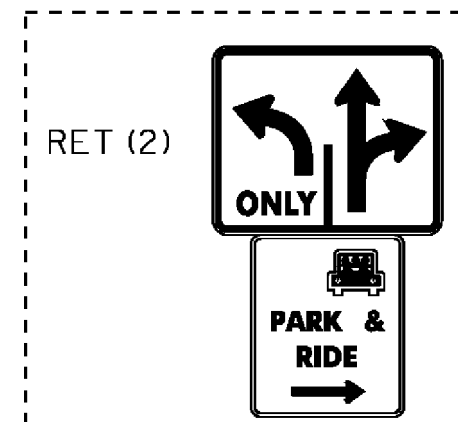
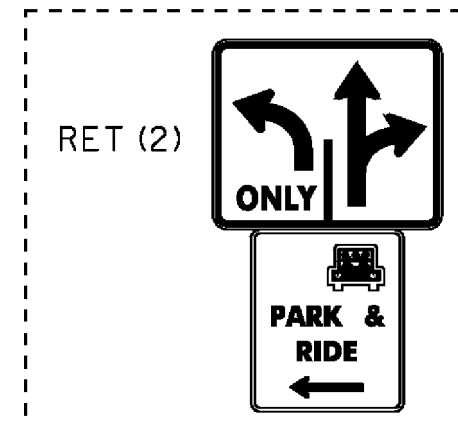
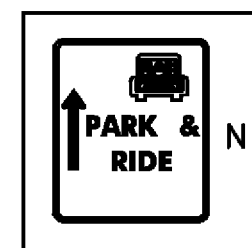
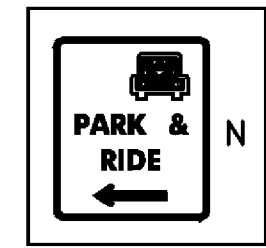
VT RTE 100

LINCOLN ST.

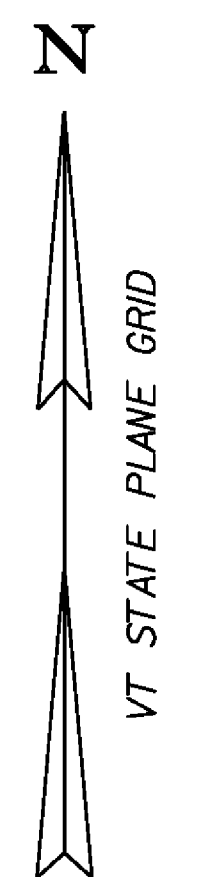
STONE ST

**PARK &
RIDE**

PERRY HILL ROAD



PROJECT NAME:	WATERBURY	PLOT DATE:	19-NOV-2009
PROJECT NUMBER:	CMG PARK(I)S RE-ADVERTISED	DRAWN BY:	BEM
FILE NAME:	zk002frm.dgn	CHECKED BY:	AJB
PROJECT LEADER:	WLD	SHEET	12 OF 32
DESIGNED BY:	BEM		
SIDE ROAD SIGNING			

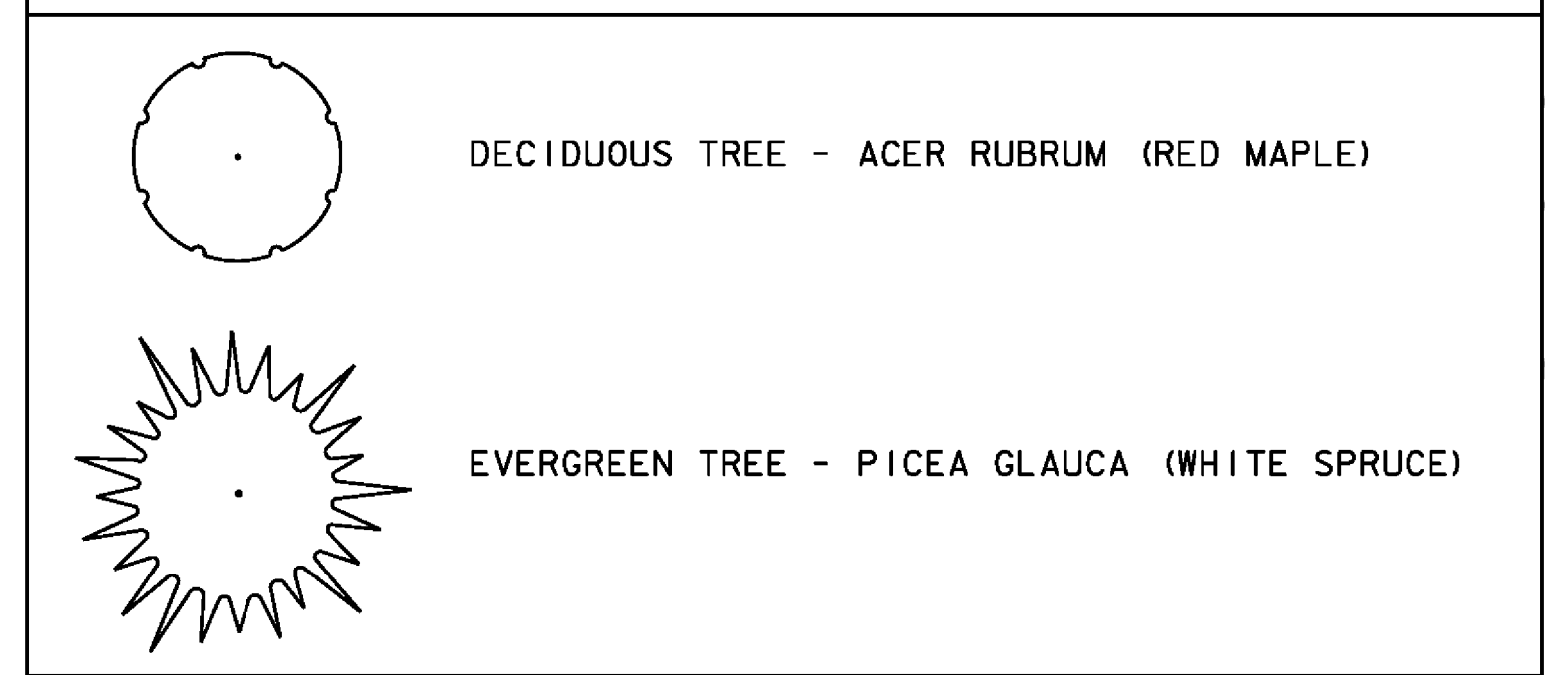


PLANTING SCHEDULE

DECIDUOUS TREES - ACER RUBRUM (RED MAPLE)			
NO.	STATION	OFFSET	SIZE
RM-1	2+97.82	99.39' RT	2 - 2.5 IN CAL IPER
RM-2	2+41.43	84.43' RT	2 - 2.5 IN CAL IPER
RM-3	1+96.42	78.91' RT	2 - 2.5 IN CAL IPER
RM-4	1+50.76	78.51' RT	2 - 2.5 IN CAL IPER
RM-5	1+01.30	64.06' RT	2 - 2.5 IN CAL IPER
RM-6	7+50.13	182.20' LT	2 - 2.5 IN CAL IPER
RM-7	7+90.19	163.26' LT	2 - 2.5 IN CAL IPER
RM-8	8+25.90	138.02' LT	2 - 2.5 IN CAL IPER
RM-9	1+44.60	112.94' LT	2 - 2.5 IN CAL IPER
RM-10	2+33.23	114.58' LT	2 - 2.5 IN CAL IPER

EVERGREEN TREES - PICEA GLAUCA (WHITE SPRUCE)			
NO.	STATION	OFFSET	SIZE
WS-1	6+33.00	60.00' RT	5 - 6 FT HEIGHT
WS-2	7+00.00	60.00' RT	5 - 6 FT HEIGHT
WS-3	7+50.00	60.00' RT	5 - 6 FT HEIGHT

LANDSCAPING LEGEND



STA. BL2 5+87.15, 35.28' LT TO 5+45.62, 16.50 RT.
 ELECTRICAL CONDUIT SLEEVE (3")
 STA. BL1 2+04.78, 2.5' RT. TO 2+03.16, 61.8' RT.
 STA. BL1 2+03.16, 61.8 RT. TO 3+10, 10' LT.
 JUNCTION BOX
 STA. BL 2+63.74, 94.7' LT. (HH-1) ELIMINATED
 STA. BL 1+09.19, 95.1' LT. (HH-2)
 STA. BL 1+09.50, 50.9' RT. (HH-3)
 STA. BL 2+03.07, 62.6' RT. (HH-4)

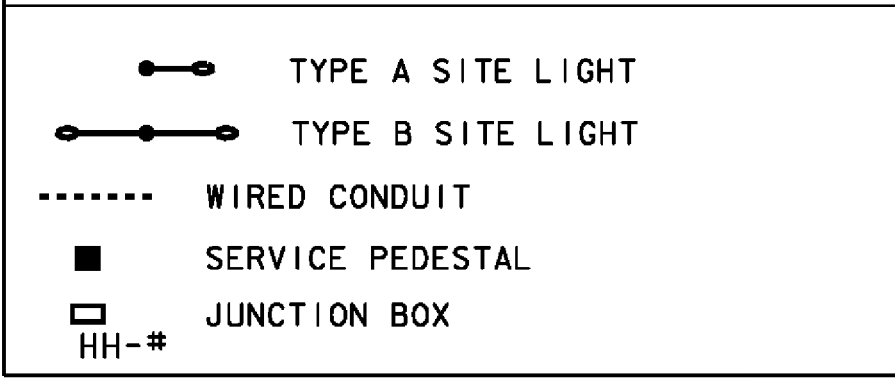
SITE LIGHTING LOCATIONS

POLE NO.	LOCATION	OFFSET TO FACE OF BASE	FIXTURE TYPE	XFMR/CIRCUIT	REMARKS
SL-1	5+45.62	16.50' RT	A		BASELINE 2
SL-2	6+74.65	23.50' RT	A		BASELINE 2
SL-3	2+33.61	97.30' LT	A		BASELINE 1
SL-4	1+43.89	97.30' LT	A		BASELINE 1
SL-5	1+06.00	19.00' LT	A		BASELINE 1
SL-6	1+51.73	64.70' RT	A		BASELINE 1
SL-7	2+41.63	67.70' RT	A		BASELINE 1
SL-8	5+87.15	35.28' LT	A		BASELINE 2
SL-9	2+04.89	1.41' RT	B		BASELINE 1

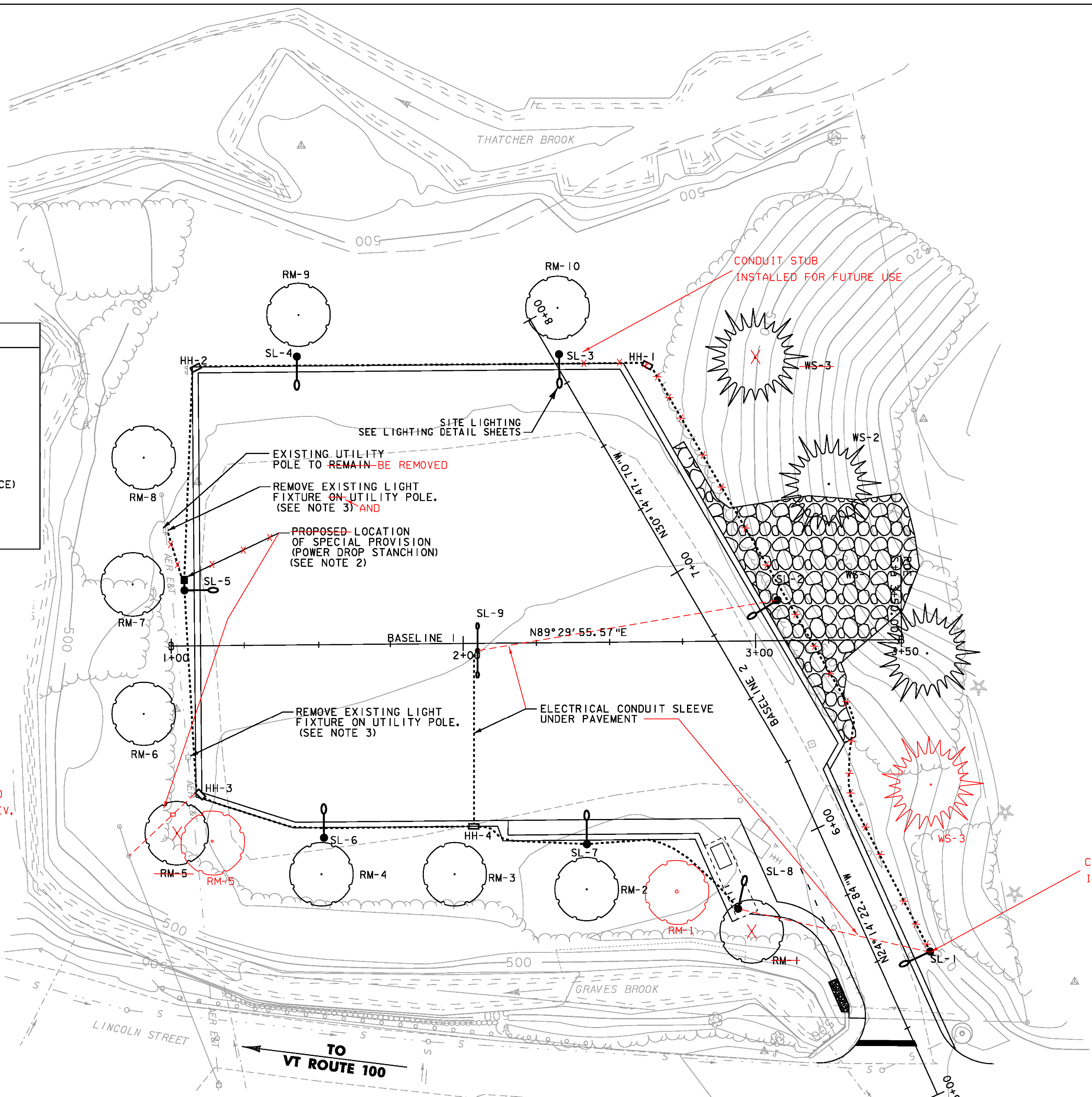
REVISED TOP ELEV.

508.40

SITE LIGHTING LEGEND



NOTE:
 1. FOR DETAIL ON ALL PERTINENT ITEMS ON THIS SHEET REFER TO VTRANS STANDARDS E-173, 175, 180A, AND 180B.
 2. WORK TO BE PAID FOR AS ITEM 679.55 POWER DROP STANCHION, STREET LIGHTING.
 3. REMOVAL AND DISPOSAL OF EXISTING LIGHT FIXTURES ON UTILITY POLES AS DIRECTED BY THE ENGINEER. WORK REQUIRED SHALL BE INCIDENTAL TO PAY ITEM 679.50 LUMINAIRE.

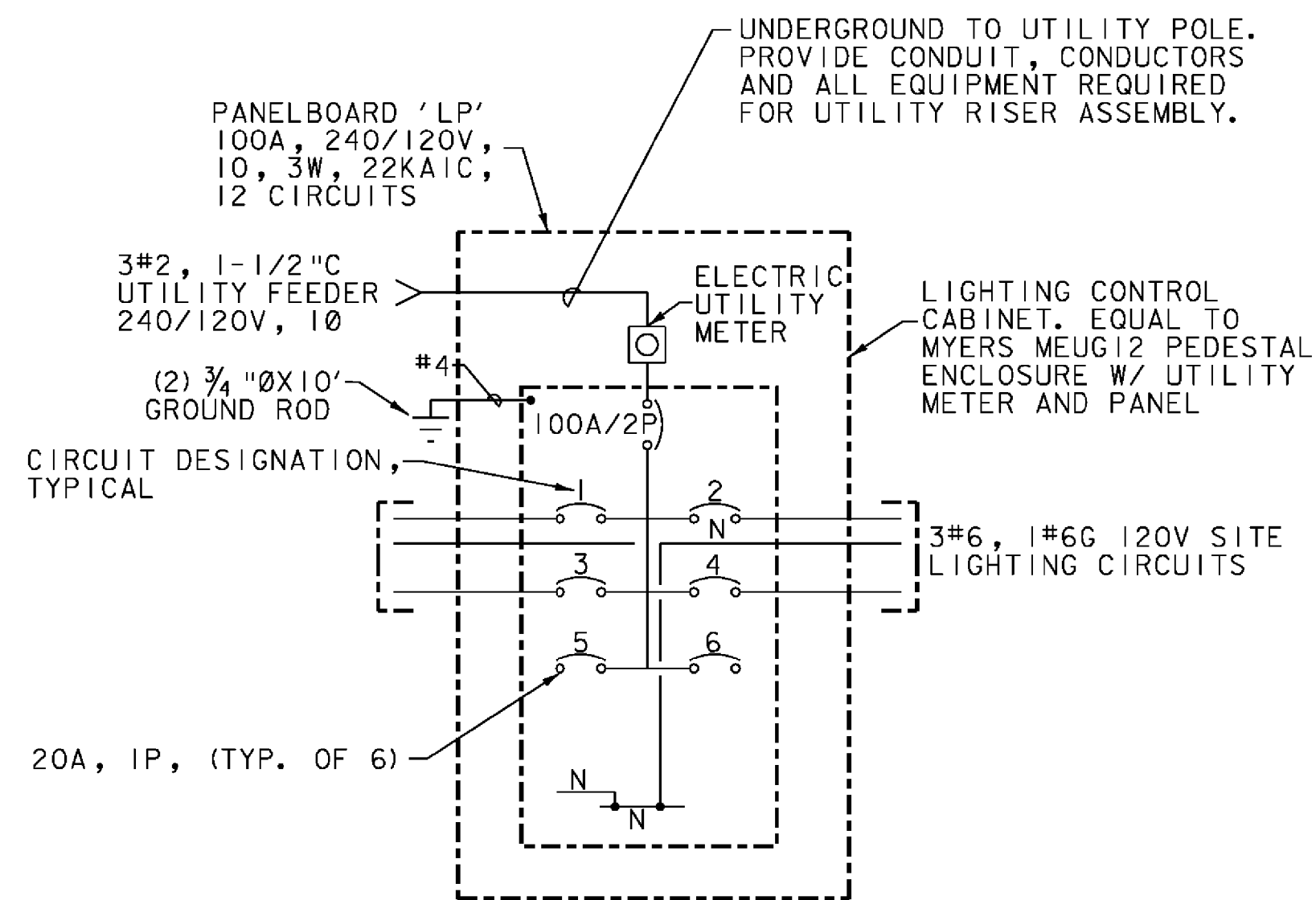
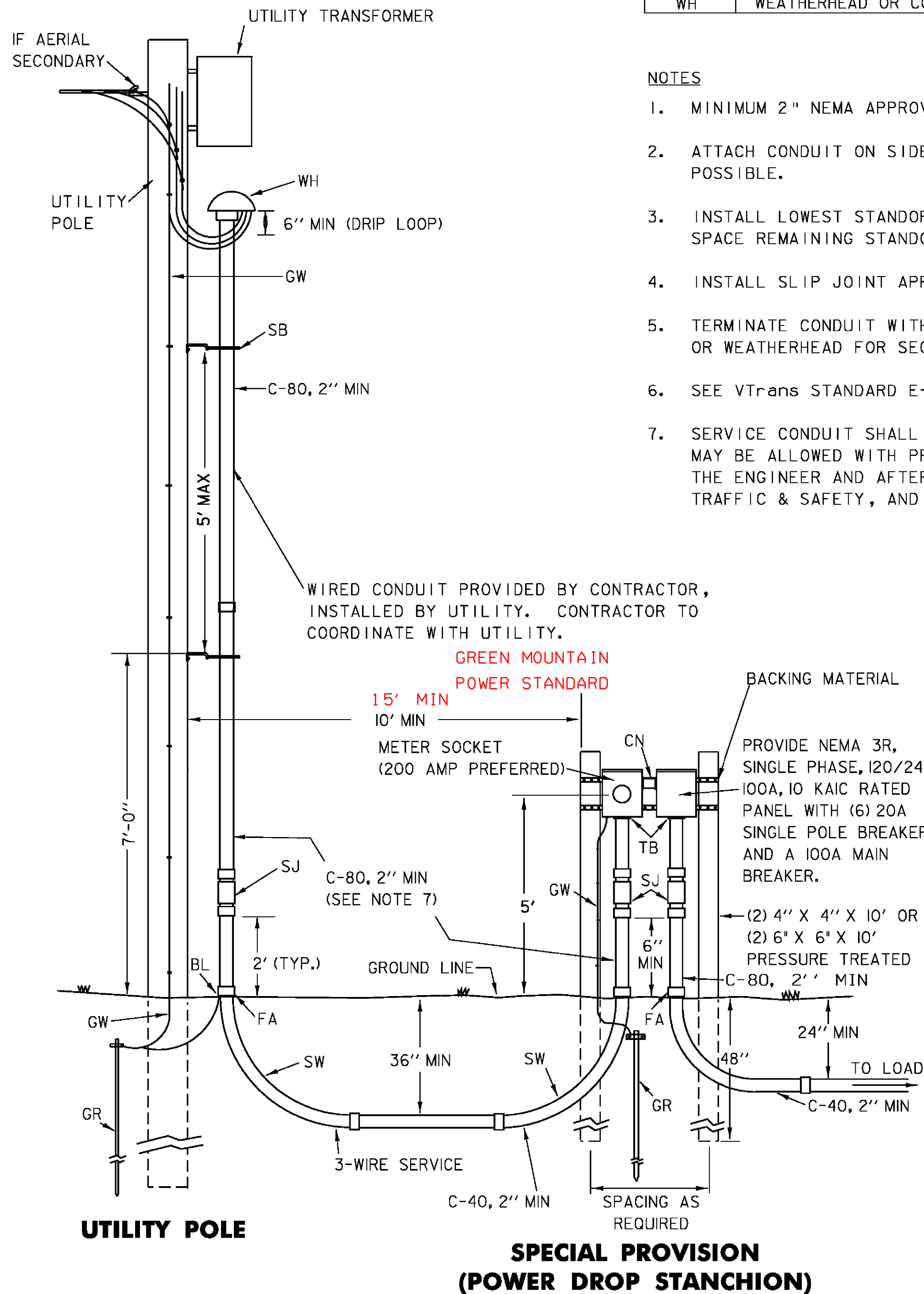


PROJECT NAME:	WATERBURY
PROJECT NUMBER:	CMG PARK(I)S RE-ADVERTISED
FILE NAME:	zk002bdr.dgn
PROJECT LEADER:	WLD
DESIGNED BY:	BEM
LIGHTING, LANDSCAPING & UTILITY PLAN	
PLOT DATE:	19-NOV-2009
DRAWN BY:	BEM
CHECKED BY:	AJB
SHEET	16 OF 32

LEGEND	
ITEM	MATERIAL
BL	BONDING LUG (IF STEEL CONDUIT)
C-40	CONDUIT - PVC SCHEDULE 40
C-80	CONDUIT - PVC SCHEDULE 80
CN	CONDUIT NIPPLE
FA	FEMALE ADAPTER OR COUPLINGS AS REQUIRED
GR	GROUND ELECTRODE, 3/8" X 8' (MIN) COPPER CLAD (2 REQ.)
GW	GROUND CONDUCTOR, #6 AWG CU (MIN)
SB	STANDOFF BRACKET (SEE VTRANS STANDARD E-175)
SJ	SLIP JOINT, INSTALL 2/3 OPEN
SSS	STAINLESS STEEL STRAP (1" MIN)
SW	90° SWEEPS, (PVC) 36" R. - SERVICE, 24" R. - LOAD
TB	THREADED BUSHING
WH	WEATHERHEAD OR CONDULATOR

NOTES

- MINIMUM 2" NEMA APPROVED PVC SCHEDULE 80 SHALL BE USED.
- ATTACH CONDUIT ON SIDE OF POLE AWAY FROM TRAFFIC WHEN POSSIBLE.
- INSTALL LOWEST STANDOFF BRACKET AT 7 FEET ABOVE GRADE. SPACE REMAINING STANDOFF BRACKETS APPROX. 5 FEET APART.
- INSTALL SLIP JOINT APPROXIMATELY 2/3 OPEN.
- TERMINATE CONDUIT WITH CONDULATOR FOR PRIMARY CABLE, OR WEATHERHEAD FOR SECONDARY CABLE.
- SEE VTRANS STANDARD E-175 FOR BACKING MATERIAL DETAIL.
- SERVICE CONDUIT SHALL BE MINIMUM 2 INCH. SMALLER CONDUIT MAY BE ALLOWED WITH PRIOR APPROVAL FROM THE UTILITY AND THE ENGINEER AND AFTER CONSULTATION WITH THE ROADWAY, TRAFFIC & SAFETY, AND PAVEMENT MANAGEMENT SECTIONS.



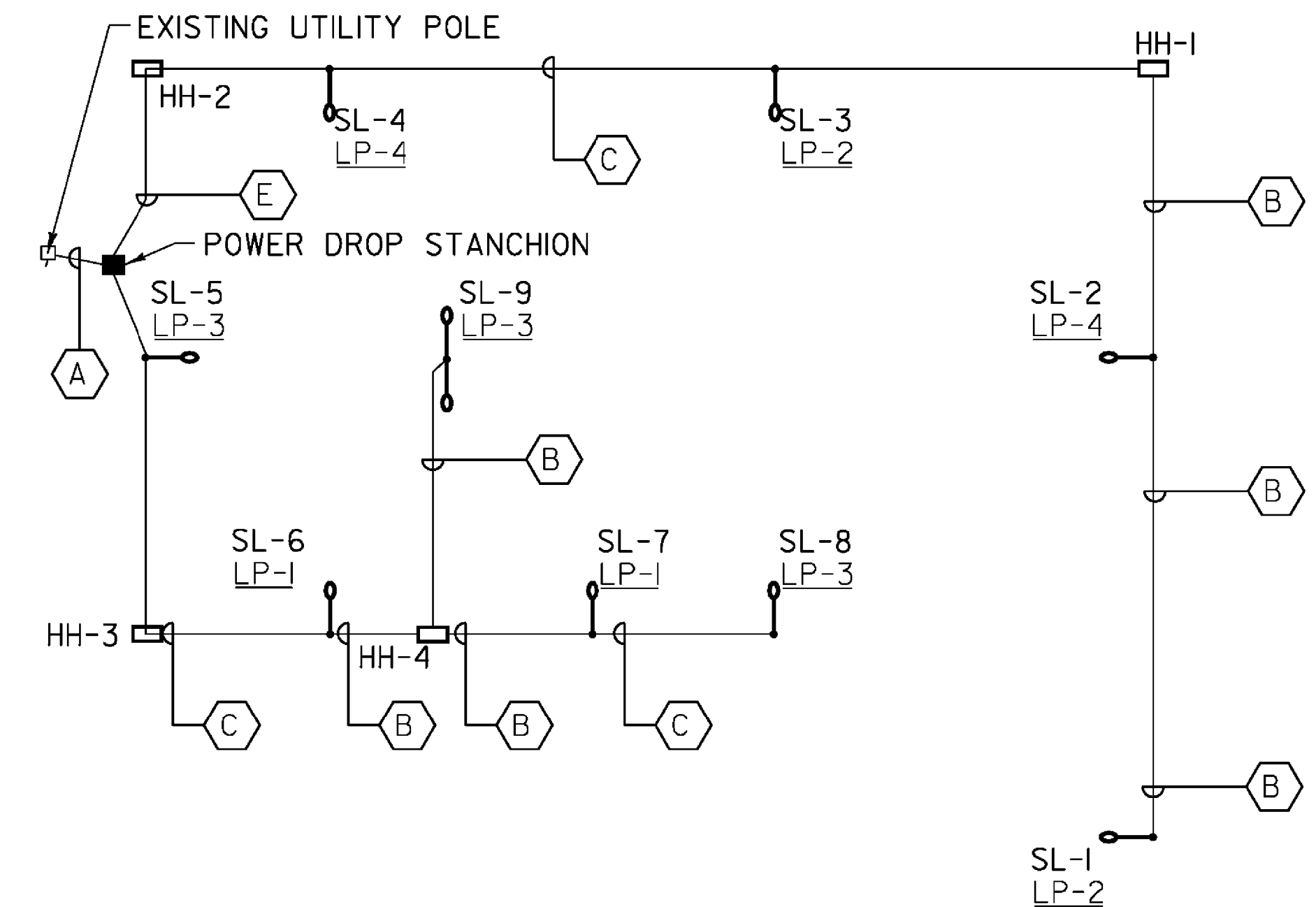
ONE-LINE DIAGRAM ROADWAY LIGHTING SERVICE PEDESTAL

NOT TO SCALE
NOTE: NO RELAYS REQUIRED

CONDUIT & CONDUCTOR SCHEDULE				
KEY	CONDUIT SIZE	CONDUCTORS		
		FOR FIXTURES	FOR SERVICE	FOR GROUND
A	2"		3#2	1#8G
B	2"	3#8		1#8G
C	2"	2#8		1#8G
E	2"	PULLCORD		

GENERAL NOTES:

- MAXIMUM OF 270° IN TOTAL BENDS PERMITTED IN SINGLE RUN OF CONDUIT
- LIGHTS SHALL BE FUSED AT BASE WITH Y-TYPE FUSE KIT (EQUAL TO HOMAC [FLOOD SEAL] FYC-6 AND 10 AMP FUSE)
- CIRCUIT CONDUCTORS INCLUDING NEUTRAL CONDUCTOR SHALL BE CLEARLY IDENTIFIED BY CORROSION RESISTANT TAGS INDICATING CIRCUIT NUMBER AND PANEL SOURCES AT EVERY POLE BASE AND HANDHOLE.
- UTILIZE APPROVED DUAL-RATED PARALLEL TAP CONNECTOR EQUAL TO ILSCO GTA SERIES WITH INSULATED COVER FOR TAPS AT POLE BASE.
- UTILIZE APPROVED DUAL-RATED PARALLEL TAP CONNECTOR EQUAL TO ILSCO PED SERIES WITH WATERTIGHT CONNECTOR, SUITABLE FOR DIRECT BURIAL IN JUNCTION BOXES, HANDHOLES AND MANHOLES.



SITE LIGHTING ONE-LINE

NOT TO SCALE

PROJECT NAME:	WATERBURY
PROJECT NUMBER:	CMG PARK(IIS) RE-ADVERTISED
FILE NAME:	zk002frm.dgn
PROJECT LEADER:	WLD
DESIGNED BY:	BEM
LIGHTING DETAILS	3
PLOT DATE:	19-NOV-2009
DRAWN BY:	BEM
CHECKED BY:	AJB
SHEET	19 OF 32

