

**GENERAL NOTES**

- FOR A SUMMARY OF CONTROL POINTS AND ALIGNMENT LAYOUT POINTS, SEE SURVEY TIES SHEET.
- FOR PAVEMENT MARKINGS AND SIGN DETAILS SEE SIGNING AND PAVEMENT MARKING PLAN SHEET.
- FOR LIGHTING DETAILS SEE LIGHTING PLAN & DETAIL SHEETS
- EXISTING BUS SHELTER AND BICYCLE RACK TO BE REMOVED AND STORED ON-SITE AT A LOCATION TO BE DETERMINED BY THE ENGINEER FOR PICK-UP BY GMTA (MR. AARON FRANKS, CHITTENDEN COUNTY TRANSPORTATION AUTHORITY, 15 INDUSTRIAL PARKWAY, BURLINGTON, VT 05401 (802)864-2282). WORK TO BE PAID FOR AS SPECIAL PROVISION (REMOVE AND SALVAGE EXISTING BUS SHELTER). REMOVAL OF EXISTING CONCRETE PAD TO BE PAID FOR AS SOLID ROCK EXCAVATION.
- DURING CONSTRUCTION THE EXISTING PARK-AND-RIDE SHALL BE CLOSED TO ALL TRAFFIC.
- THE BUS SHELTER SHALL BE PAID FOR AS SPECIAL PROVISION (BUS SHELTER). INCLUDED IN THIS WORK SHALL BE ALL STRUCTURAL MATERIALS USED TO CONSTRUCT THE BUS SHELTER. FOR DETAILS OF THESE STRUCTURAL ITEMS.
- THE BICYCLE RACK SHALL BE PAID FOR AS SPECIAL PROVISION (BICYCLE RACK). FOR BICYCLE RACK DETAILS, SEE LANDSCAPING AND MISCELLANEOUS DETAILS.
- SURFACES AND PAVEMENT TO BE REMOVED OUTSIDE THE CUT/FILL LIMITS SHALL BE PAID FOR AS EXCAVATION OF SURFACES AND PAVEMENTS.
- SLOPE ROUNDING: ALL CUT SLOPES TO BE ROUNDED IN ACCORDANCE WITH STANDARD SHEET B-5 UNLESS OTHERWISE NOTED ON THE PLANS.
- EMULSIFIED ASPHALT SHALL BE APPLIED AT THE RATE OF 0.025 GAL/SYBETWEEN SUCCESSIVE COURSES OF PAVEMENT OR AS DIRECTED BY THE ENGINEER.
- PARKING LOT SHOULDERS TO BE TOPSOILED, SEEDED & MULCHED.
- THE CONTRACTOR IS DIRECTED TO SUBSECTION 301.06 REGARDING THE COMPACTION OF SUBBASE MATERIAL FOR THIS PROJECT.
- FOR PG BINDER GRADES SEE SECTION 406 OF THE GENERAL SPECIAL PROVISIONS.

**EXCAVATION OF SURFACES AND PAVEMENTS**

STA. BL1 1+19, 58.80' RT. TO 1+88, 65.00' RT.

**YIELDING MARKER POSTS**

STA. BL2 5+28, 34.19' LT. TO 5+77, 24.70' LT.

**CLEARING AND GRUBBING**

STA. BL2 5+25, RT. TO 5+83, RT.

STA. BL2 6+27, RT. TO 7+65, RT.

**SPECIAL PROVISION (BUS SHELTER)**

STA. BL2 6+05, 34.00' LT. (CENTERED)

**SPECIAL PROVISION (BICYCLE RACK)**

STA. BL2 5+91, 36.81' LT. (CENTERED)

**METAL HAND RAILING**

STA. BL2 5+32.24, 18.23' LT. TO 5+38.43, 15.33' LT.

**STONE FILL, TYPE II**

STA. BL2 5+38, 15.62' LT. TO 5+50, 15.38' LT.

STA. BL2 6+23, 20.38' RT. TO 7+37, 20.00' RT.

**RELAYING PIPE CULVERTS**

STA. BL2 5+23, 16.50' RT. TO 5+42, 20.00' LT.

**SPECIAL PROVISION (INFILTRATION TRENCH)**

STA. BL1 0+98.38, 109.09' LT. TO 2+62.87, 112.13' LT.

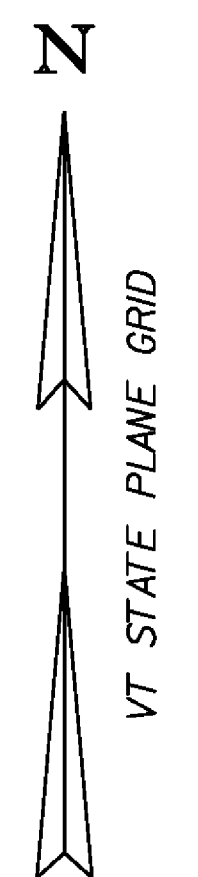
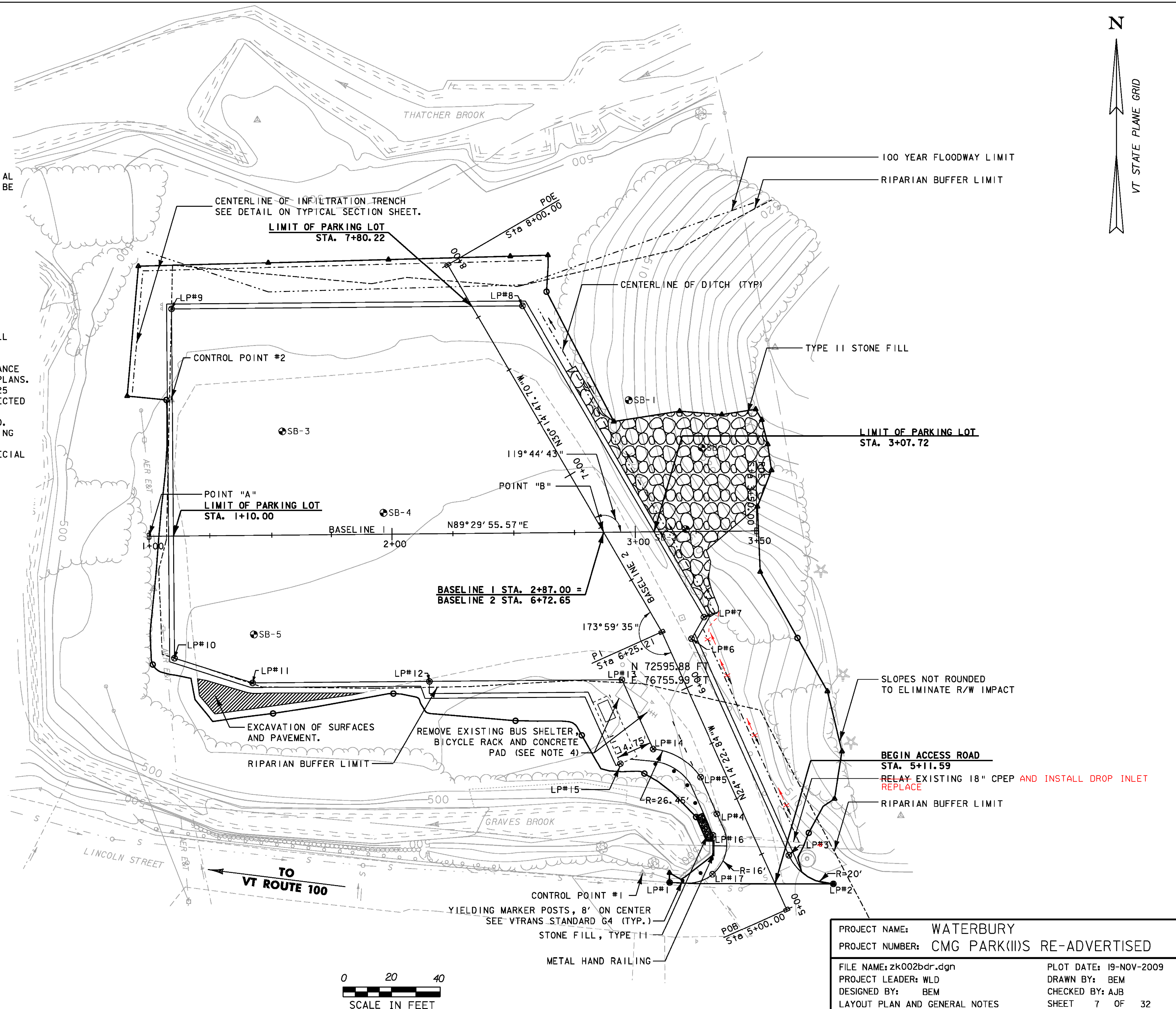
STA. BL2 8+20.08, 138.45' LT. TO 8+60.94, 109.63' LT.

**LEGEND:**

LAYOUT POINTS	⊙
100 YEAR FLOODWAY LIMIT	-----
RIPARIAN BUFFER LIMIT	-----
DITCH CENTERLINE	-----
CONSTRUCTION LIMITS	○-----△
PROPERTY LINE	-----

**NOTE:**

FOR ADDITIONAL INFORMATION SEE CROSS SECTIONS. FOR LAYOUT POINT COORDINATES SEE THE TABLE ON SURVEY TIES SHEET.



PROJECT NAME:	WATERBURY
PROJECT NUMBER:	CMG PARK(II)S RE-ADVERTISED
FILE NAME:	zk002bdr.dgn
PROJECT LEADER:	WLD
DESIGNED BY:	BEM
LAYOUT PLAN AND GENERAL NOTES	
PLOT DATE:	19-NOV-2009
DRAWN BY:	BEM
CHECKED BY:	AJB
SHEET	7 OF 32

