

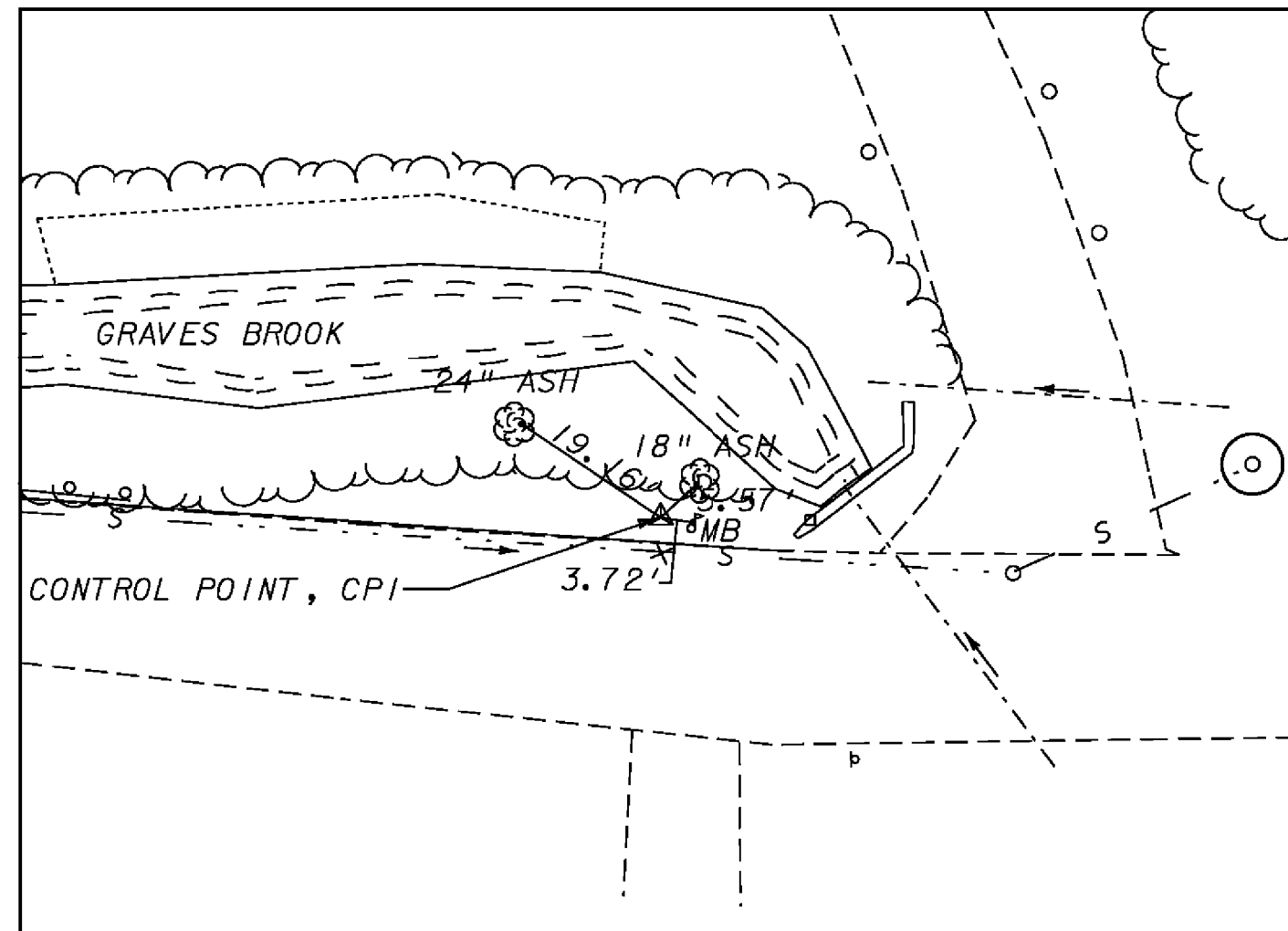
LAYOUT POINTS

LAYOUT POINT #	NORTHING*	EASTING*	STATION	OFFSET	BASELINE
LP1	672546.998	1576776.229	5+29.93	39.36 LT	BL-2
LP2	672546.416	1576843.604	5+01.74	21.83 RT	BL-2
LP3	672558.204	1576825.319	5+20.00	10.00 RT	BL-2
LP4	672575.168	1576795.748	5+47.61	10.00 LT	BL-2
LP5	672590.266	1576788.950	5+64.16	10.00 LT	BL-2
LP6	672647.201	1576785.249	6+17.60	10.00 RT	BL-2
LP7	672656.075	1576790.321	6+23.610	18.19 RT	BL-2
LP8	672784.129	1576715.652	7+69.935	18.00 RT	BL-2
LP9	672782.866	1576571.326	1+10.00	93.40 LT	BL-1
LP10	672639.209	1576572.565	1+10.00	50.26 RT	BL-1
LP11	672629.052	1576604.743	1+42.09	60.70 RT	BL-1
LP12	672629.689	1576677.486	2+14.84	60.70 RT	BL-1
LP13	672630.381	1576756.631	6+14.01	23.00 LT	BL-2
LP14	672601.910	1576769.440	5+82.79	23.01 LT	BL-2
LP15	672595.870	1576755.99	5+82.81	37.75 LT	BL-2
LP16	672566.380	1576794.180	5+40.24	15.04 LT	BL-2
LP17	672550.370	1576793.940	5+25.74	21.83 LT	BL-2

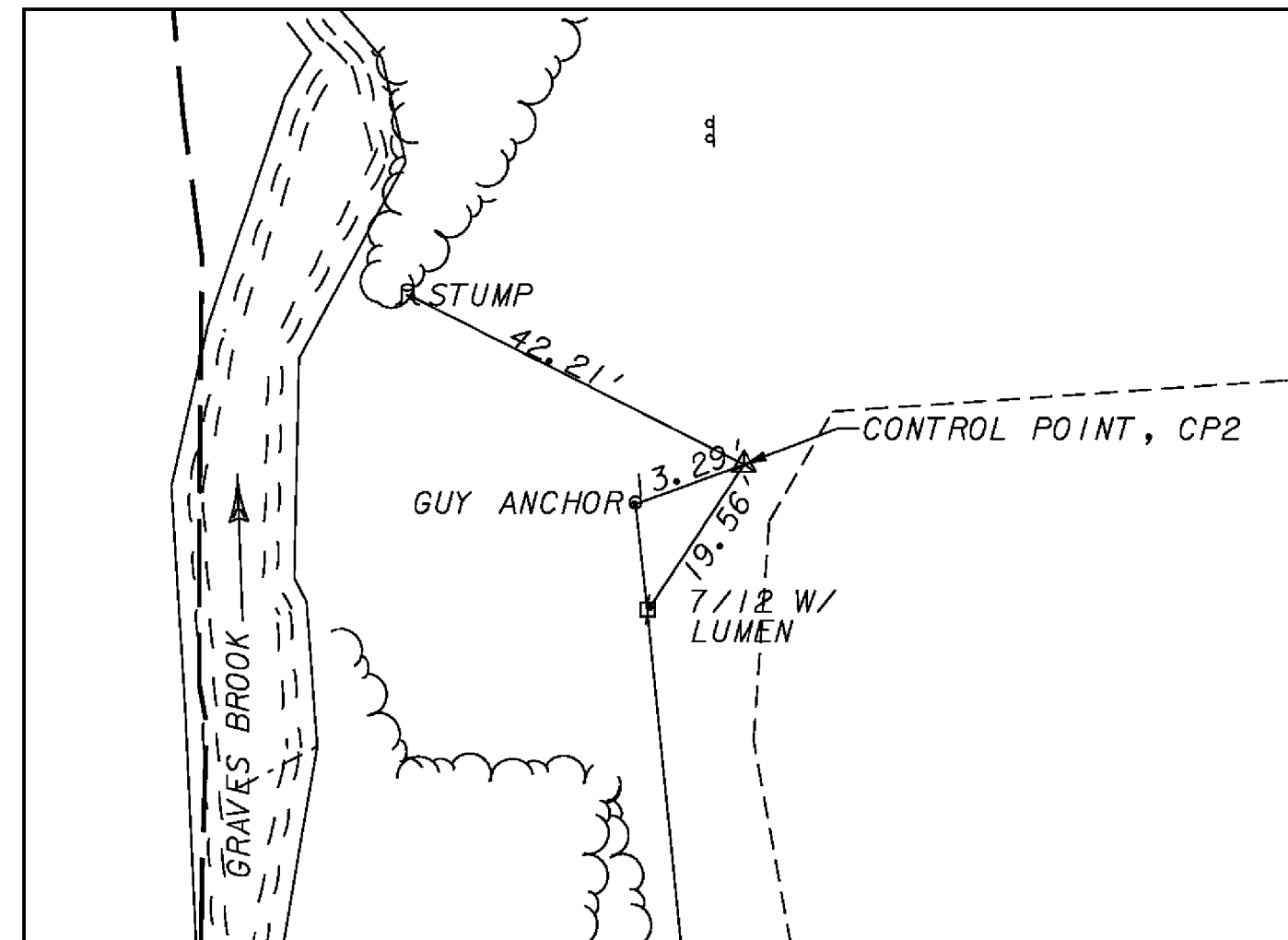
505.73 }  
 506.20 } REVISED FINISHED ELEVATIONS  
 505.90 }

\* IN ORDER TO MATCH THE VERMONT STATE GRID COORDINATE SYSTEM, ADD 600,000 TO THE NORTHING COORDINATES AND ADD 1,500,000 TO THE EASTING COORDINATES. ELEVATIONS NEED NO ADJUSTMENT.

TRAVERSE TIES



CONTROL POINT #1

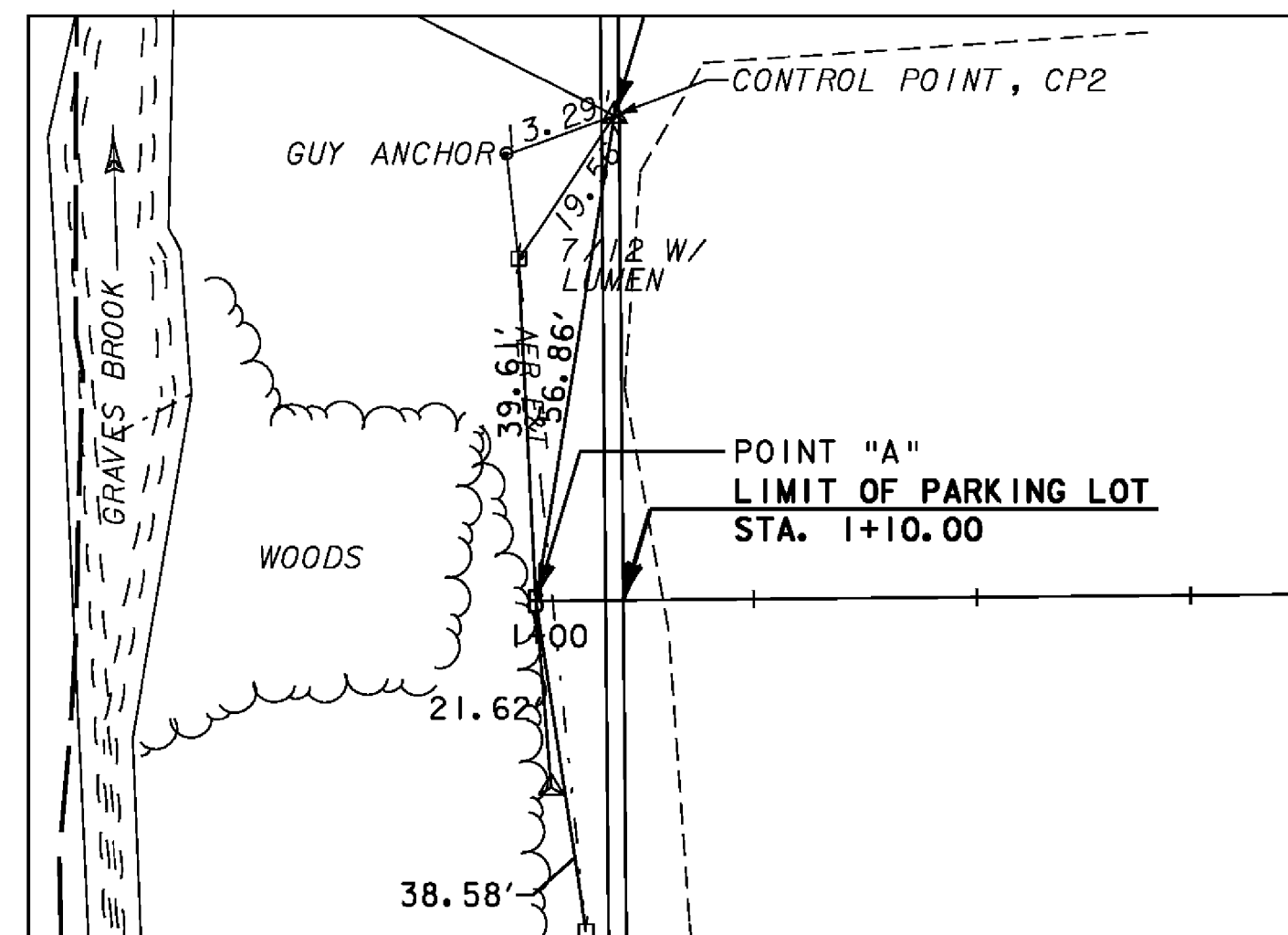


CONTROL POINT #2

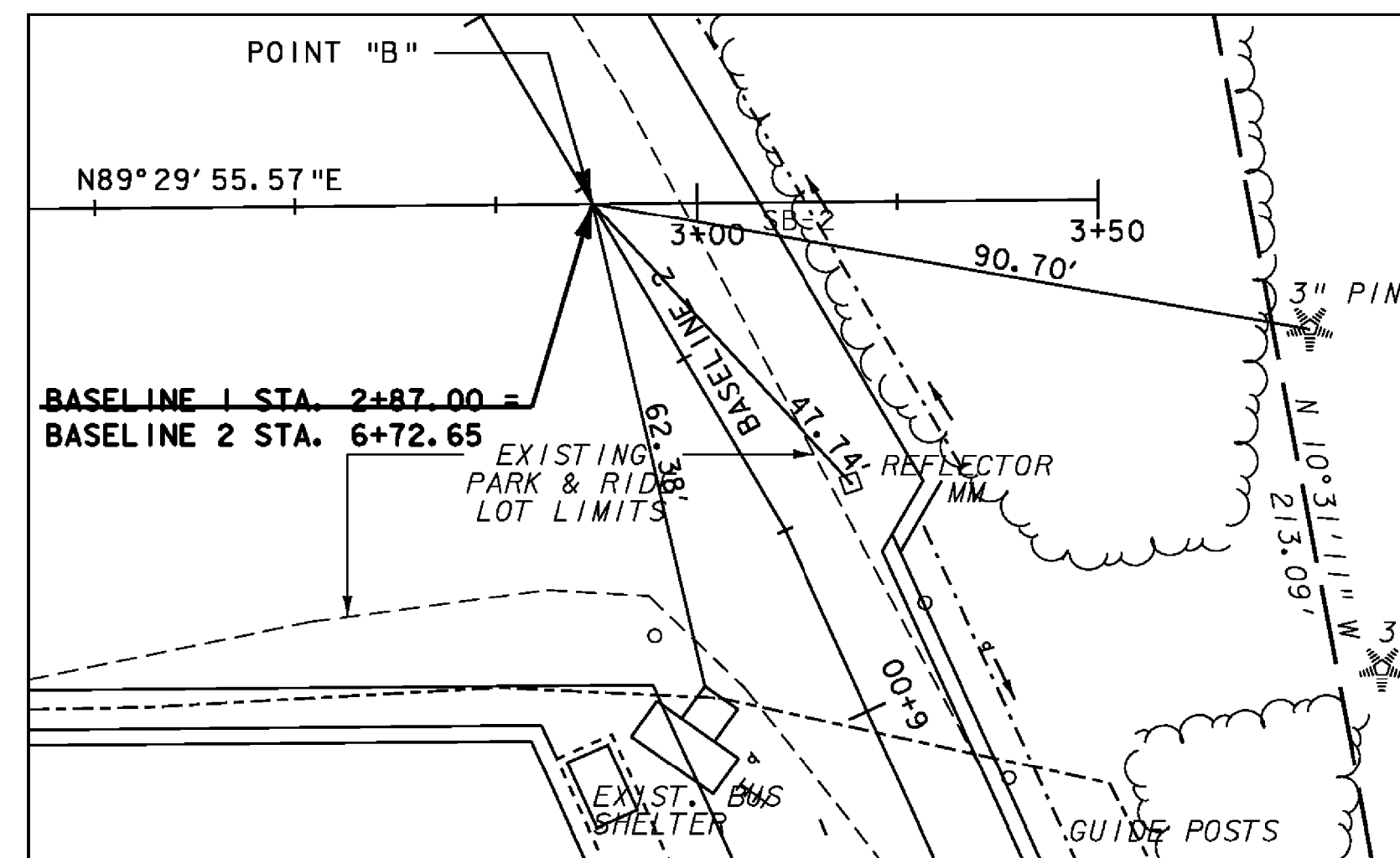
CONTROL POINTS

POINT	NORTHING*	EASTING*	ELEVATION
CP1	672550.680'	1576765.079'	506.17'
CP2	672745.527'	1576571.115'	502.59'

ALIGNMENT TIES



ALIGNMENT POINT A



ALIGNMENT POINT B (1" = 20' @ FULL SIZE)  
 SCALE

ALIGNMENT POINTS

POINT	NORTHING*	EASTING*
A	672689.382'	1576562.125'
B	672691.018'	1576749.109'

DATUM  
 VERTICAL NAVD 88  
 HORIZONTAL NAD 83 (1996)

PROJECT NAME: WATERBURY  
 PROJECT NUMBER: CMG PARK(II)S RE-ADVERTISED  
 FILE NAME: zk0021e.dgn PLOT DATE: 19-NOV-2009  
 PROJECT LEADER: WLD DRAWN BY: BEM  
 DESIGNED BY: BEM CHECKED BY: AJB  
 SURVEY TIES SHEET 6 OF 32