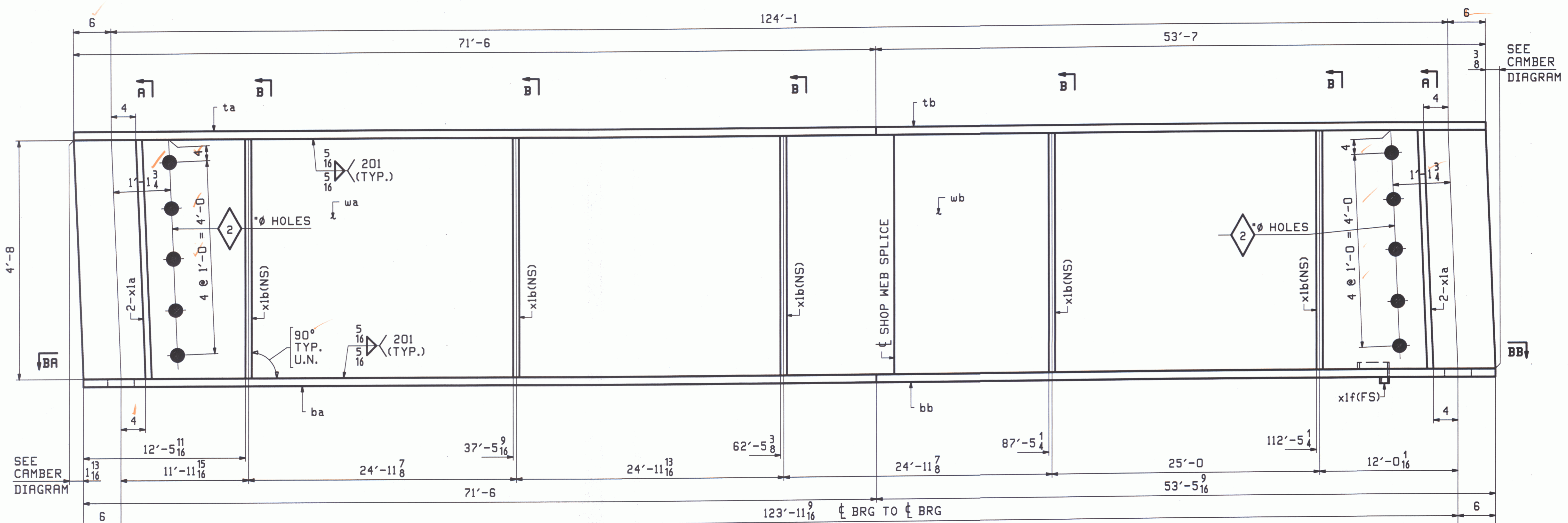


ABM INFO		BILL OF MATERIAL				JOB NO.	DRAWING NO.	REV.	
PAGE	LINE	MARK	QTY	MARK	MATERIAL	LENGTH FT INCHES	REMARKS	WT	PROCUREMENT NOTES
		1G1A	1		GIRDER			27566	
1	J		1	wa	PL $\frac{9}{16} \times 56$	72 $\frac{13}{16}$	M270-SOWT2 (H2-3)		
1	L		1	wb	PL $\frac{7}{8} \times 56$	52 $\frac{1}{4}$	M270-SOWT2 (H2-3)		
1	E		1	ta	PL $\frac{7}{8} \times 16$	71 6	M270-SOWT2 (H2-3)		
1	G		1	tb	PL $\frac{7}{8} \times 16$	53 7	M270-SOWT2 (H2-3)		
1	A		1	ba	PL $1 \frac{1}{8} \times 16$	71 6	M270-SOWT2 (H2-3)		
1	C		1	bb	PL $1 \frac{1}{8} \times 16$	53 $\frac{9}{16}$	M270-SOWT2 (H2-3)		
2	B		4	x1a	PL $\frac{1}{2} \times 7 \frac{1}{2}$	4 8	MIE		
2	C		5	x1b	PL $\frac{1}{2} \times 7 \frac{1}{2}$	4 8			
2	E		1	x1f	PL $1 \frac{1}{4} \times 3 \frac{1}{8}$	0 11	DRIP BAR		

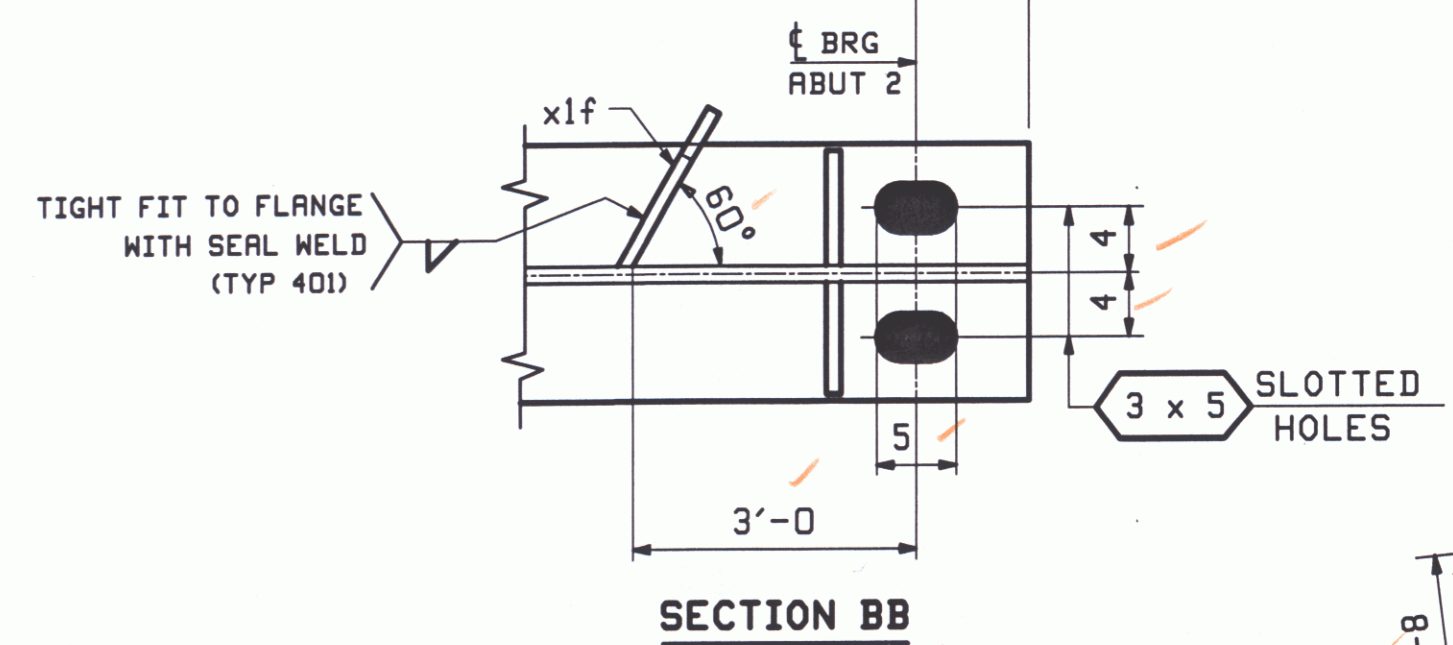


SEE CAMBER DIAGRAM

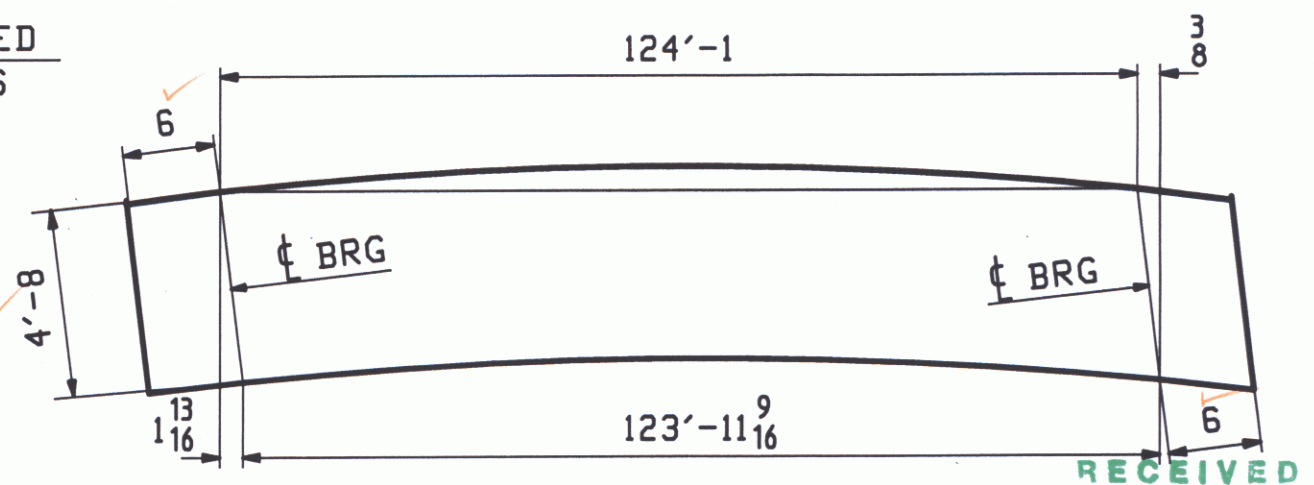
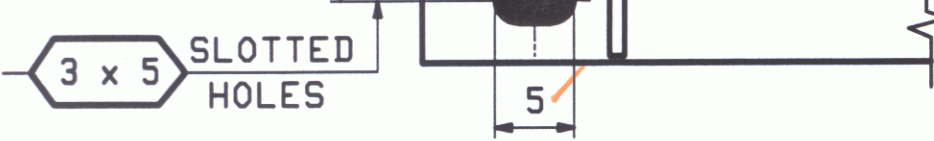
SEE CAMBER DIAGRAM

ONE - GIRDER - 1G1A

FOR GIRDER STANDARDS SEE DRAWINGS X1
 FOR CAMBER & FLANGE DIAGRAMS SEE DRAWING C1.
 FOR GENERAL NOTES & WELD PROCEDURES SEE DRAWING GNI.
 H2-3 DENOTES MATERIAL SUBJECT TO CHARPY V-NOTCH TESTING.

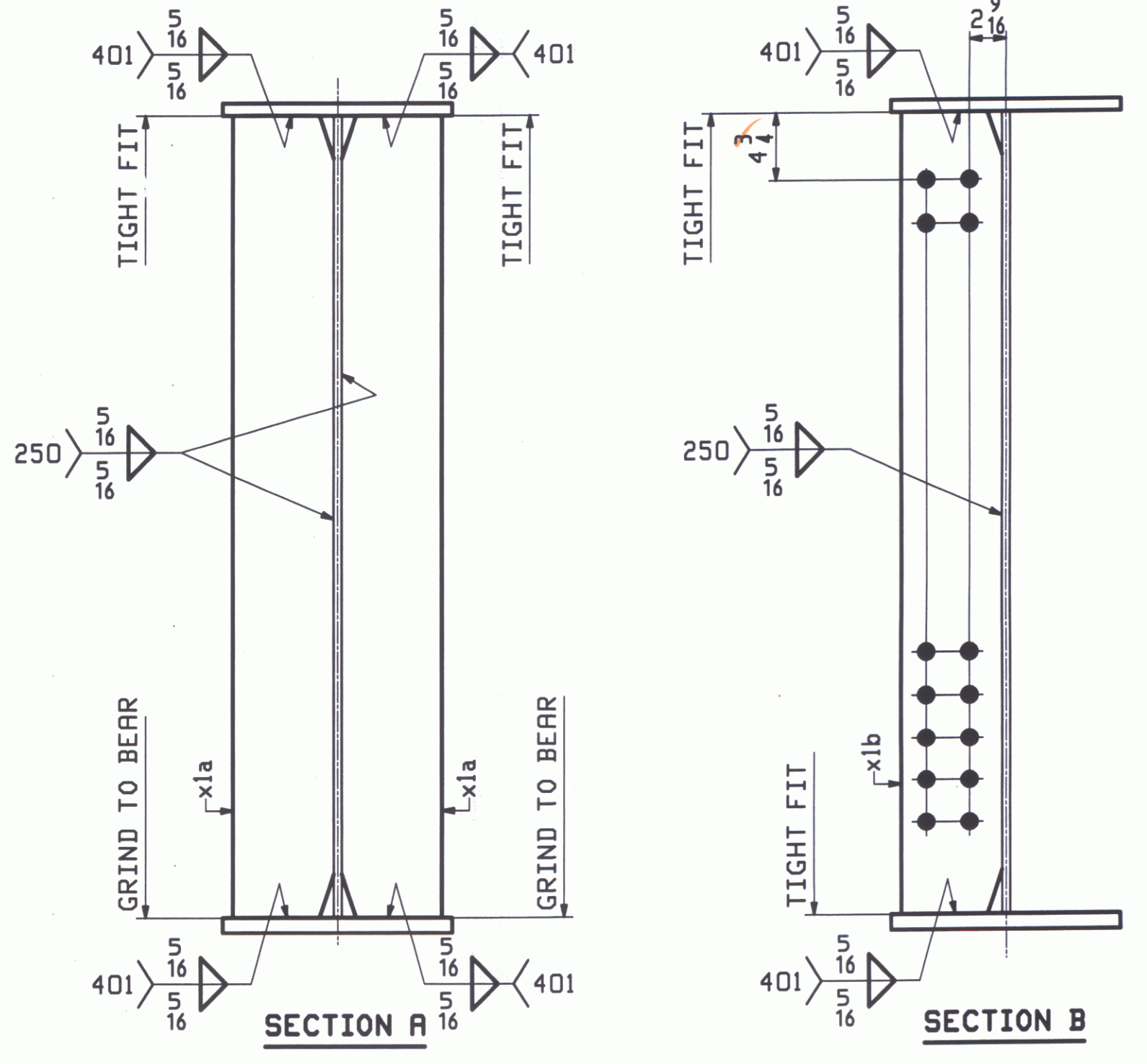


SECTION BA



ORIENTATION DIAGRAM
 FOR CAMBER SEE DWG C1

RECEIVED
 CK'D BY CAM OK'D BY TXL
 MAY 1 2009
 APPROVED BY RLU DATE 5-12-09



SECTION A

SECTION B

APR 22 2009						
REV.	DATE	REMARKS	DWN	CHK	APVL	SHOP
MATERIAL: M270-SOW		SURFACE PREP. & PAINT: SEE GNI		HOLES: $15/16 \phi$		SHOP BOLTS: NONE
DESCRIPTION: GIRDER - 1G1A						
CASCO BAY STEEL STRUCTURES, INC. 75 SPRING HILL ROAD SACO, MAINE 04072 PHONE (207) 282-7360 FAX. (207) 282-1179						
STRUCTURE: TOWN HIGHWAY #2 OVER WILLOUGHBY RIVER			BRIDGE NO. BR 8		DRAWN: LWD DATE: 03/11	
TOWN OF BROWNINGTON			COUNTY OF ORLEANS, VERMONT		CHKD: PCP DATE: 04/16	
CONTRACTOR: AUSTIN CONSTRUCTION						
LOCATION: Town of Brownington			JOB NO. 396		DWG NO. 1	
PROJ NO. BRO 1449 (28)						
CUSTOMER: VERMONT ROT					REV. Δ	