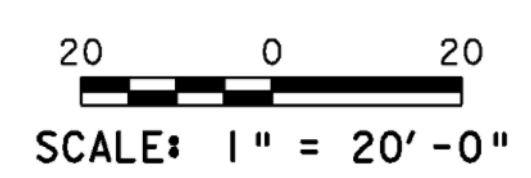
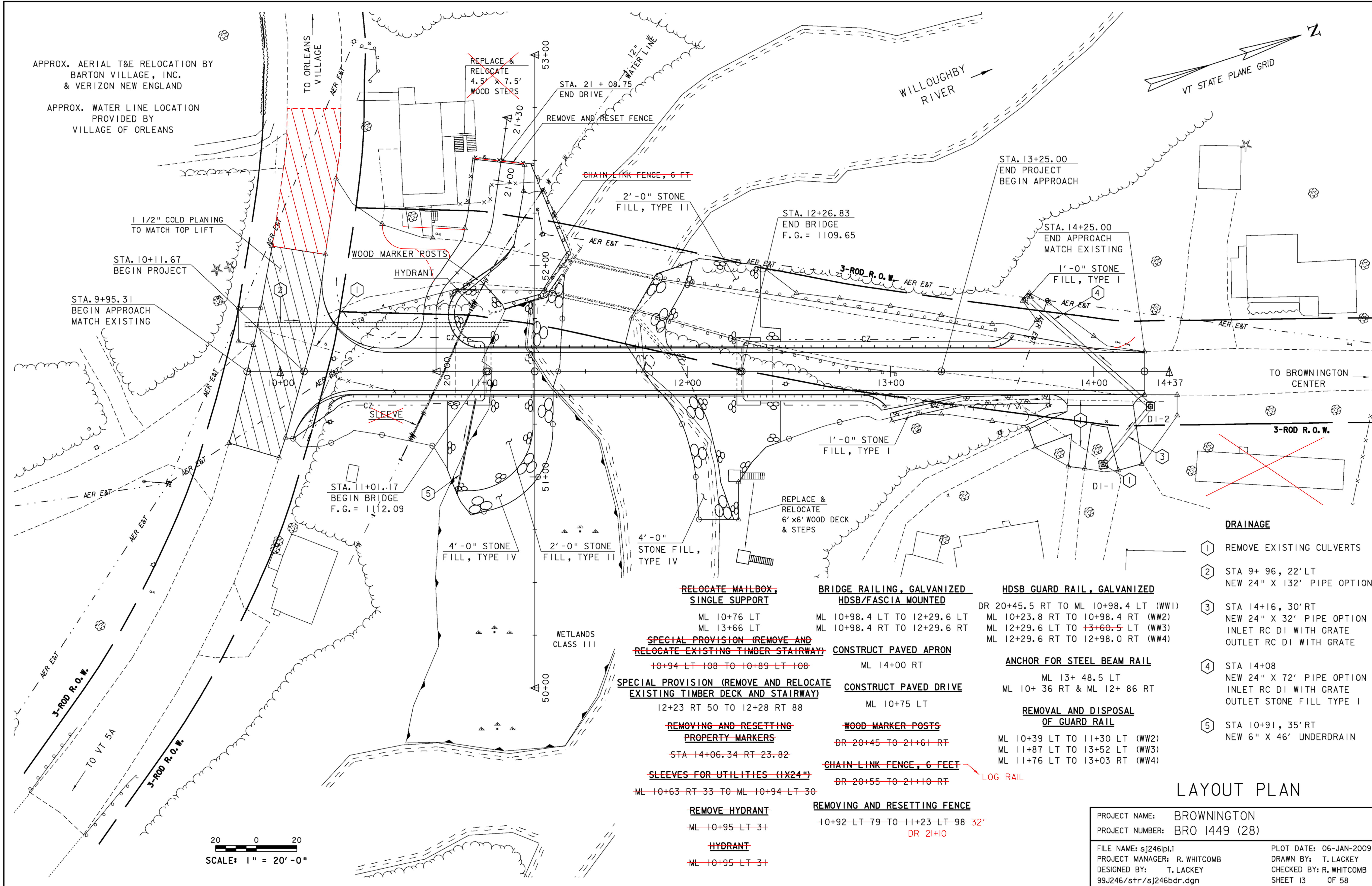
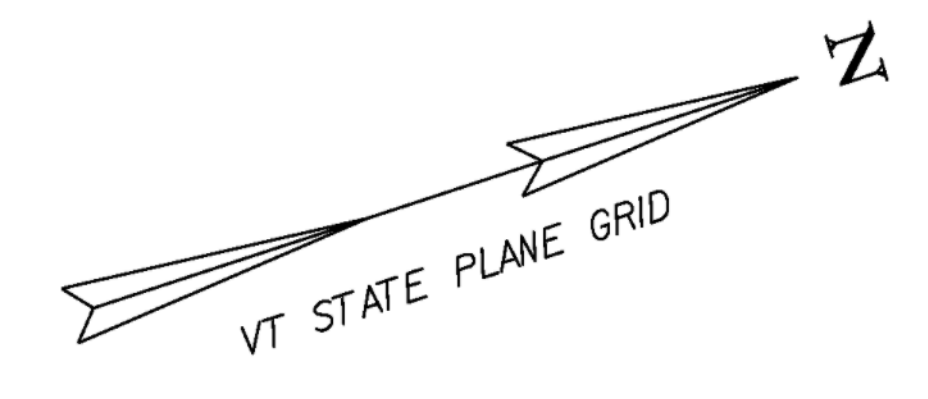


APPROX. AERIAL T&E RELOCATION BY
BARTON VILLAGE, INC.
& VERIZON NEW ENGLAND

APPROX. WATER LINE LOCATION
PROVIDED BY
VILLAGE OF ORLEANS



- | | | | |
|---|---|--|---|
| <p>RELOCATE MAILBOX, SINGLE SUPPORT
ML 10+76 LT
ML 13+66 LT</p> <p>SPECIAL PROVISION (REMOVE AND RELOCATE EXISTING TIMBER STAIRWAY)
10+94 LT 108 TO 10+89 LT 108</p> <p>SPECIAL PROVISION (REMOVE AND RELOCATE EXISTING TIMBER DECK AND STAIRWAY)
12+23 RT 50 TO 12+28 RT 88</p> <p>REMOVING AND RESETTING PROPERTY MARKERS
STA 14+06.34 RT 23.82</p> <p>SLEEVES FOR UTILITIES (1X24")
ML 10+63 RT 33 TO ML 10+94 LT 30</p> <p>REMOVE HYDRANT
ML 10+95 LT 31</p> <p>HYDRANT
ML 10+95 LT 31</p> | <p>BRIDGE RAILING, GALVANIZED HDSB/FASCIA MOUNTED
ML 10+98.4 LT TO 12+29.6 LT
ML 10+98.4 RT TO 12+29.6 RT</p> <p>CONSTRUCT PAVED APRON
ML 14+00 RT</p> <p>CONSTRUCT PAVED DRIVE
ML 10+75 LT</p> <p>WOOD MARKER POSTS
DR 20+45 TO 21+61 RT</p> <p>CHAIN-LINK FENCE, 6 FEET
DR 20+55 TO 21+10 RT</p> <p>REMOVING AND RESETTING FENCE
10+92 LT 79 TO 11+23 LT 98 32'
DR 21+10</p> | <p>HDSB GUARD RAIL, GALVANIZED
DR 20+45.5 RT TO ML 10+98.4 LT (WW1)
ML 10+23.8 RT TO 10+98.4 RT (WW2)
ML 12+29.6 LT TO 13+60.5 LT (WW3)
ML 12+29.6 RT TO 12+98.0 RT (WW4)</p> <p>ANCHOR FOR STEEL BEAM RAIL
ML 13+ 48.5 LT
ML 10+ 36 RT & ML 12+ 86 RT</p> <p>REMOVAL AND DISPOSAL OF GUARD RAIL
ML 10+39 LT TO 11+30 LT (WW2)
ML 11+87 LT TO 13+52 LT (WW3)
ML 11+76 LT TO 13+03 RT (WW4)</p> | <p>DRAINAGE</p> <ul style="list-style-type: none"> ① REMOVE EXISTING CULVERTS ② STA 9+ 96, 22' LT
NEW 24" X 132' PIPE OPTION ③ STA 14+16, 30' RT
NEW 24" X 32' PIPE OPTION
INLET RC DI WITH GRATE
OUTLET RC DI WITH GRATE ④ STA 14+08
NEW 24" X 72' PIPE OPTION
INLET RC DI WITH GRATE
OUTLET STONE FILL TYPE I ⑤ STA 10+91, 35' RT
NEW 6" X 46' UNDERDRAIN |
|---|---|--|---|

LAYOUT PLAN

PROJECT NAME:	BROWNINGTON	PLOT DATE:	06-JAN-2009
PROJECT NUMBER:	BRO 1449 (28)	DRAWN BY:	T. LACKEY
FILE NAME:	sj246pl1	CHECKED BY:	R. WHITCOMB
PROJECT MANAGER:	R. WHITCOMB	SHEET	13 OF 58
DESIGNED BY:	T. LACKEY		
99J246/str/sj246bdr.dgn			