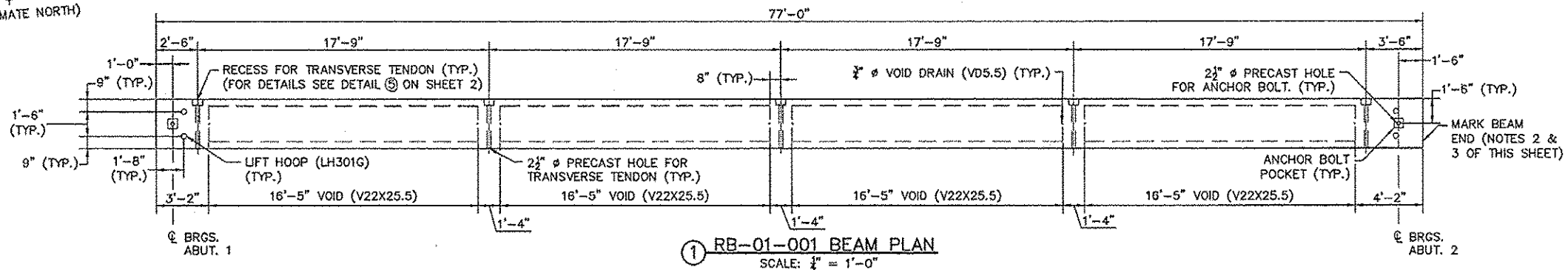
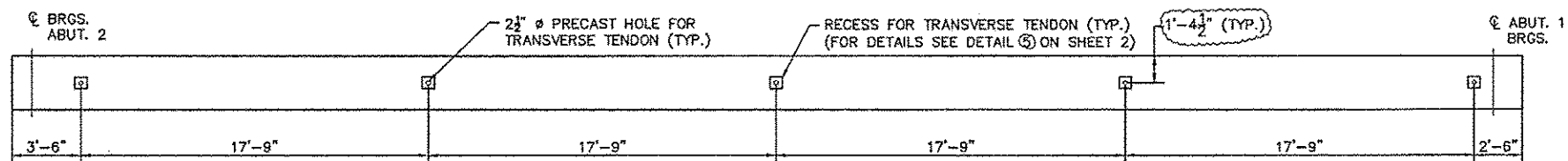


GENERAL NOTES:

- SEE SHEETS 1, 2, & 3 FOR PLANS AND DETAILS.
- ALL BEAMS ARE LABELED AS FOLLOWS:
PRODUCT TYPE - IDENTIFICATION NUMBER - SEQUENCE NUMBER
- MARK ALL BEAM ENDS "NORTH END" FOLLOWED BY THE CORRESPONDING BEAM LABEL.

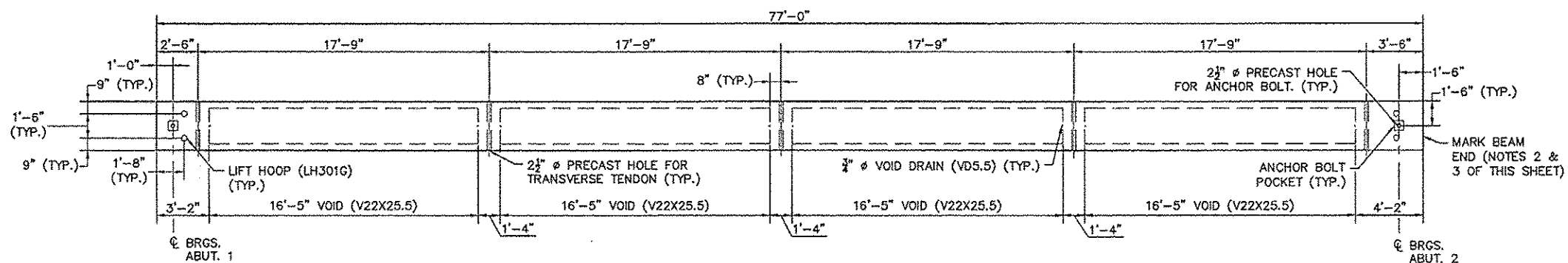


① RB-01-001 BEAM PLAN
SCALE: 1/4" = 1'-0"

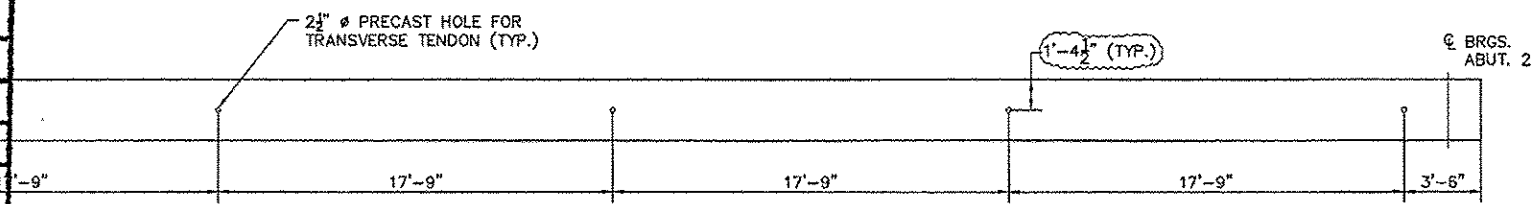


② RB-01-001 BEAM WEST ELEVATION
SCALE: 1/4" = 1'-0"

- NOTES:
1. BEAM ELEVATION IS DEPICTED AS VIEWED FROM WEST.
2. COMPOSITE BARS ARE NOT SHOWN FOR CLARITY. SEE BEAM PLAN FOR LOCATION AND SPACING.



③ RB-02-002 THROUGH RB-02-008 BEAM PLAN
SCALE: 1/4" = 1'-0"



④ RB-02-002 THROUGH RB-02-008 BEAM EAST ELEVATION
SCALE: 1/4" = 1'-0"

- NOTE:
1. COMPOSITE BARS ARE NOT SHOWN FOR CLARITY. SEE BEAM PLAN FOR LOCATION AND SPACING.

PART NO	DESCRIPTION	QTY.
VD5.5	1/2" Ø VOID DRAIN 5 1/2" LONG	8
LH301G	LIFT HOOP (3) 1/2" STRANDS	4
V22X25.5	22"X25.5" VOID, 16'-5"	4
	LONG	
	VERMONT STATE MIX DESIGN	
B400E	#4 BENT	52
B401E	#4 BENT	(63)
B402E	#4 BENT	6
B403E	#4 BENT	(8)
S404E	#4 STRAIGHT	6
S405E	#4 STRAIGHT	12
B406E	#4 BENT	40
B407E	#4 BENT	(8)
S408E	#4 STRAIGHT	24
B409E	#4 BENT	(8)

NOTE:
ALL ITEMS LISTED ABOVE ARE SUGGESTED PRODUCTS. FABRICATOR MAY SUBSTITUTE APPROVED EQUALS AS NECESSARY.

Hoyle, Tanner & Associates, Inc.
125 College Street, 4th Floor Burlington, VT 05401
Tel (802)860-1331 Fax (802)860-6499 www.hoyletanner.com
© Copyright 2010 Hoyle, Tanner & Associates, Inc.

W.M.E. DAILEY, INC.
PRECAST CONCRETE PRODUCTS
TEL: (802) 242-4418 FAX: (802) 242-4419

STATE OF VERMONT AGENCY OF TRANSPORTATION
STOWE, VT
MOSCOW ROAD (T.H. NO. 1) OVER MILLER BROOK BRIDGE #3
PROJECT NO. BHO 1446(30)

Accepted	<input checked="" type="checkbox"/>
Accepted as Noted	<input type="checkbox"/>
Accepted Noted Resubmit	<input type="checkbox"/>
Rejected, Revise Resubmit	<input type="checkbox"/>
Rejected - Unacceptable	<input type="checkbox"/>

Checking is only for conformance with the design concept of the Project and compliance with the information given in the Contract Documents. The Engineer assumes no liability for errors or omissions that may be contained herein. The Contractor, by approving and submitting these documents, verifies their accuracy as stipulated on the Contractor's Shop Drawing Stamp.

Date 7/2/10
By *Wm. King*
DUBOIS AND KING

044